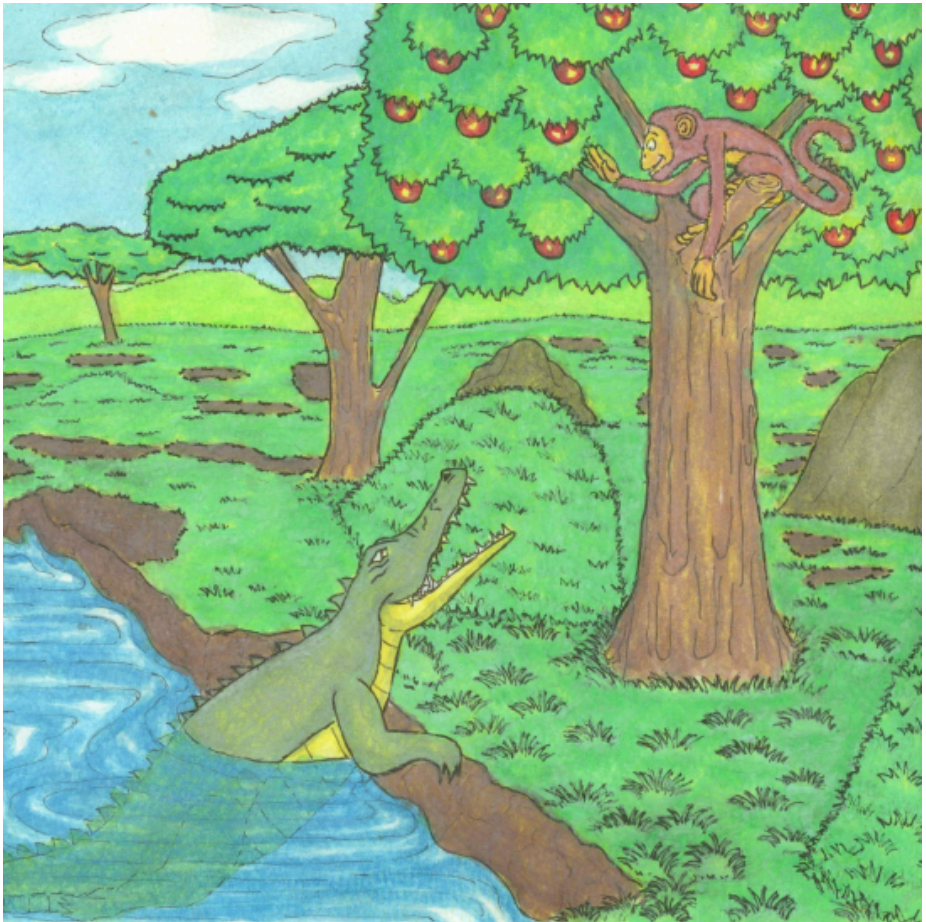




Kwena le Tshwene e ne e le metswalle

Ntombikayise Malaza
Sibusiso Khumalo





Kwena le Api e ne e le metswalle ya hlooho ya kgomo.

Kwena e ne e dula ka hara noka.

Api yona e ne e dula sefateng pela noka.



Kwena e ne e ja ditlhapi tse nokeng.

Api yona e ne e ja ditholwana tsa sefate.



Ngwana wa Kwena a kula haholo.

Nkgono wa Kwena a mmolella a re, "Ke sebete sa Api feela se ka fodisang ngwana wa hao."



Kwena a memela Api ntlong ya hae nokeng,
mme kwena ya ithaopa hore e tla mo jara
mokokotlong wa yona.



Ha Kwena e ntse a sesa, ya bolella Api ka ngwana yona a kulang.

“Ke sebete sa Api feela se tla mo fodisa,” Kwena a rialo a hloname.



“O ka be o mpoelletse pele re tloha!” ke Api yeo.

“Ke sia sebete sa ka sefateng, ha re kgutle re ilo se lata.”



Kwena ya sesetsa lebopong la noka.

Api ya theoha mokokotlong ya tlolela sefateng.

Kwena ya mo emela.



Kwena ya ema nako e telele, empa Api ya se ke ya kgutla.



Ulwazi Lwethu is a Zenex Foundation funded and initiated project to develop a series of graded and leisure African language readers and teacher support materials. This project is targeted at teaching and supporting learners in the Foundation Phase to improve their home language reading and understanding. The readers have been originated in nine African languages in collaboration with Molteno Institute for Language and Literacies, Nelson Mandela Institute for Education and Rural Development, Room to Read South Africa, and Saide. All resources are developed as Open Education Resources (OER).



Your attribution should include the following:

Title: Kwena le Tshwene e ne e le metswalle

Author/s: Ntombikayise Malaza

Translator/s: Maria Vaz

Illustrator/s: Sibusiso Khumalo


Assurer/s: Nthabiseng Tsatsi, Mathapelo Morake

Language: Sesotho (South Africa)



© Zenex Foundation - Saide 2023

CC BY includes the following elements:

BY  - Credit must be given to the creator

