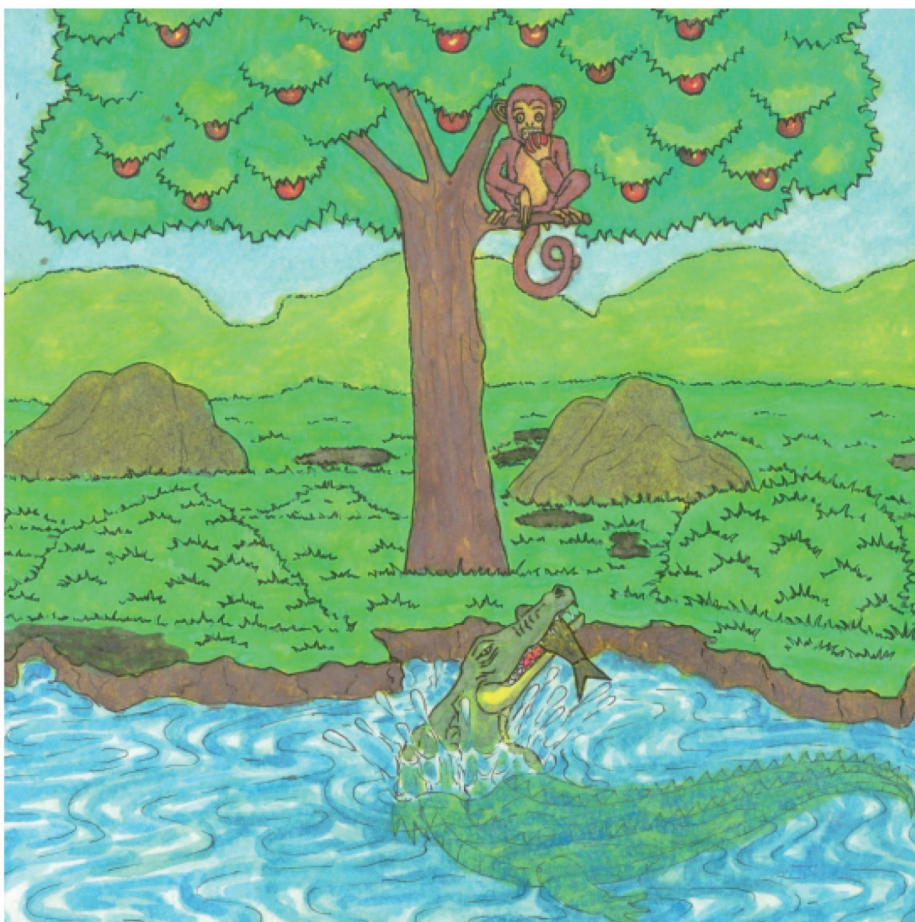


Ngweṅa na Ṙhoho vho vha vhe khonani khulu.

Ngweṅa o vha a tshi dzula mulamboni.

Ṙhoho o vha a tshi dzula murini u re tsini na mulambo.



Ngweṅa o vha a tshi ḵa khovhe dzi re mulamboni. Ṽhoho a tshi ḵa mitshelo i re murini.



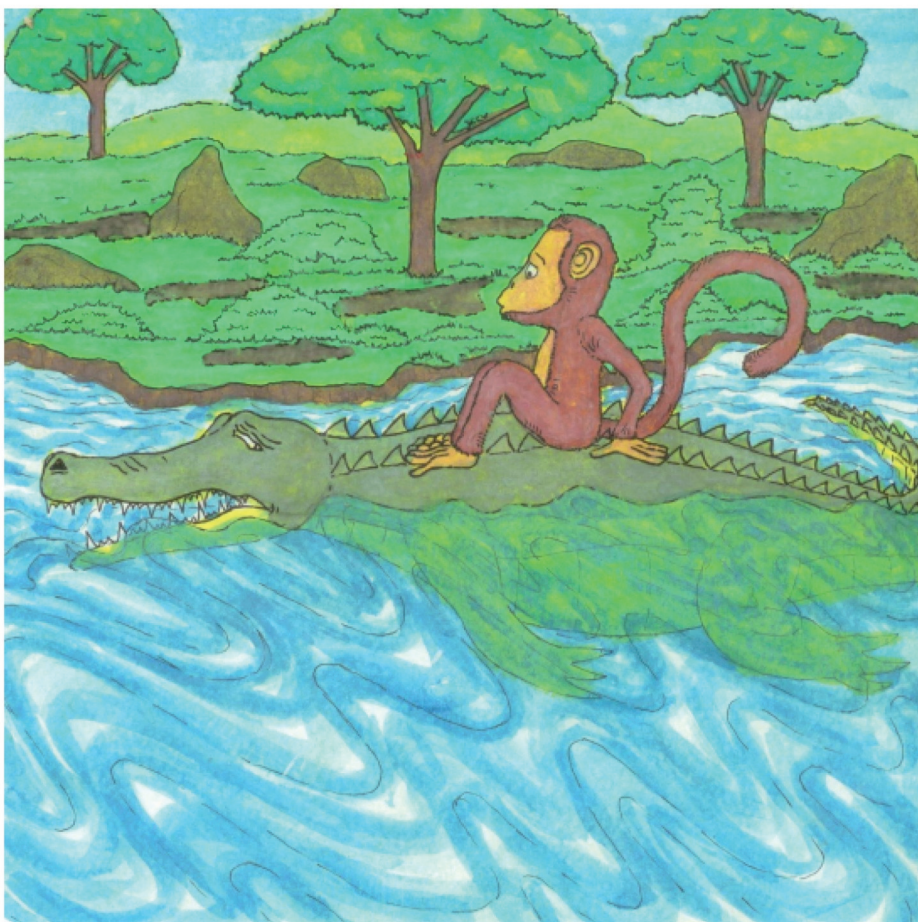
Ñwana wa Ngweṅa o vha a tshi khou lwala nga maanḁa.

Makhulu wa Ngweṅa vha ri, "Tshivhindi tsha ṽhoho ndi tshone fhedzi tshine tsha ḁo mu fhodza."



Ngweṅa a ramba Ṭhoho muḡini wawe u re mulamboni.

Ngweṅa a amba uri u ḡo beba ṭhoho muṭanani.



Musi Ngweṅa a tshi khou tala, a vhudza ṭhoho nga ha ṅwana wawe ane a khou lwala.

“Ndi tshivhindi tsha ṭhoho fhedzi tshine tsha ḡo mu fhodza,” hu amba Ngweṅa o ṭungufhala.



“Wo vha wo fanela wo mmbudza ri sa athu takuwa!” hu  
amba Ṫhoho.

“Ndi vhea tshivhindi tshanga murini, kha ri humele murahu  
ri ye u tshi dzhia,” hu amba Ṫhoho.



Ngweḡa a humela murahu.

Ṱhoho a tsa muṡanani a gidimela murini.

Ngweḡa a lindela.



Ngweṅa a lindela tshifhinga tshilapfu fhedzi Ṽhoho a si vhuve.