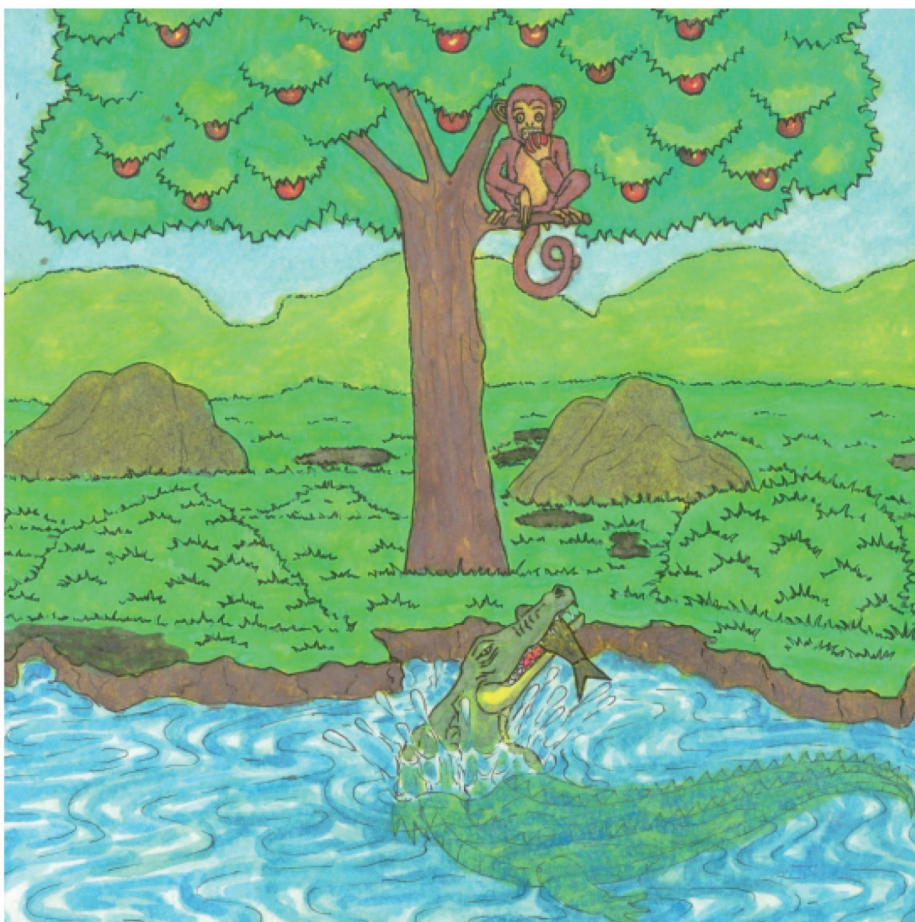


N'wangwenya na N'wamfenhe a ku ri vanghana.

N'wangwenya a tshama enambyeni.

N'wamfenhe a tshama ensinyeni ekusuhi na nambu.



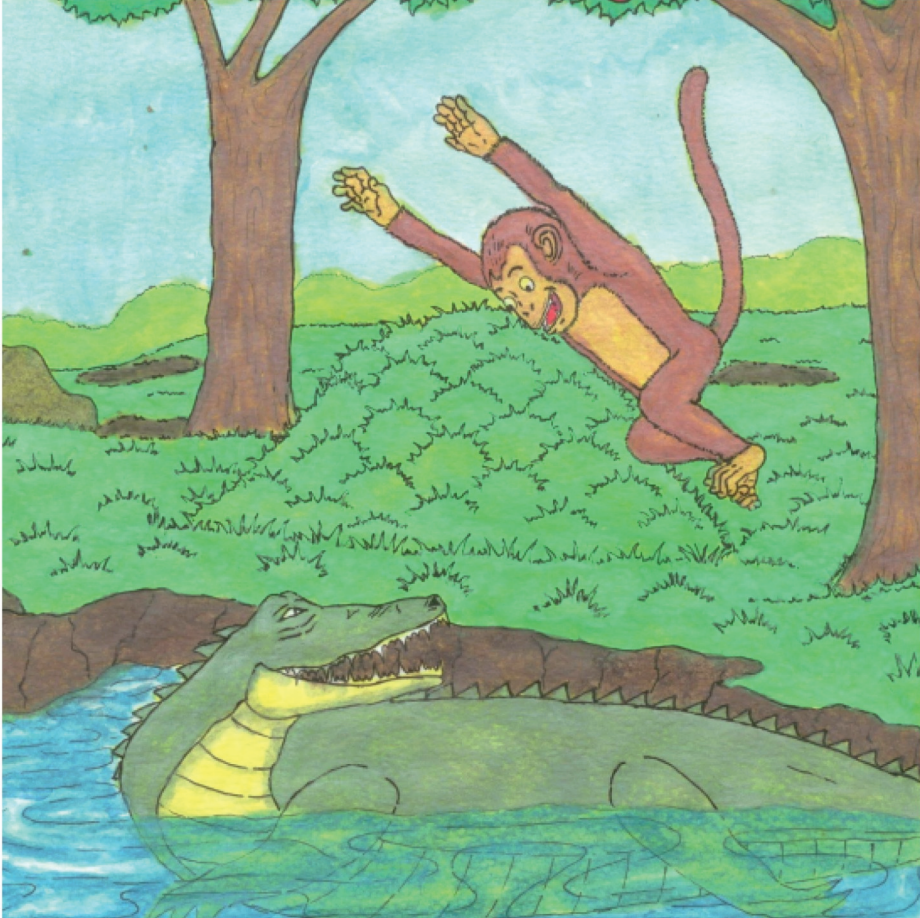
N'wangwenya ai dya tinlampfi enambyeni.

N'wamfenhe a dya mihandzu ensinyeni.



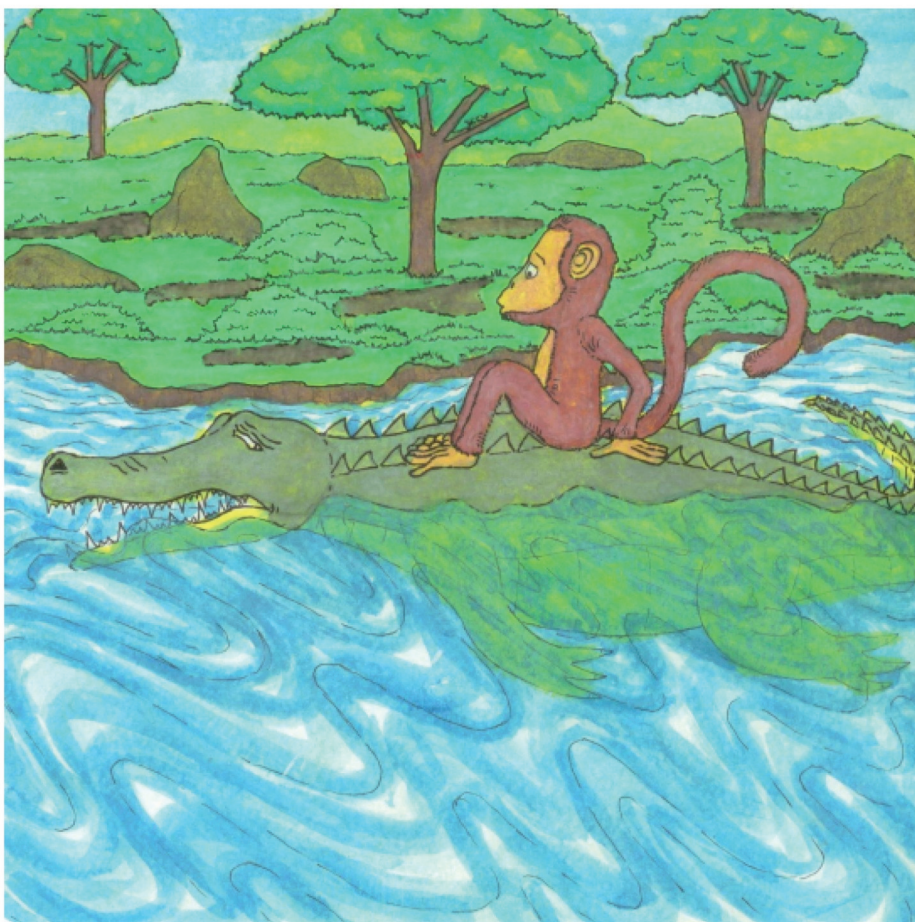
N'wana wa N'wangwenya a vabya swinene.

Kokwana wa N'wangwenya a byela N'wangwenya a ku, "I xivindzi xa N'wamfenhe lexi nga horisaka n'wana wa wena."



N'wangwenya a rhamba N'wamfanhe endlwini ya yena enambyeni.

N'wangwenya a tinyikelela ku bebula N'wamfenhe.



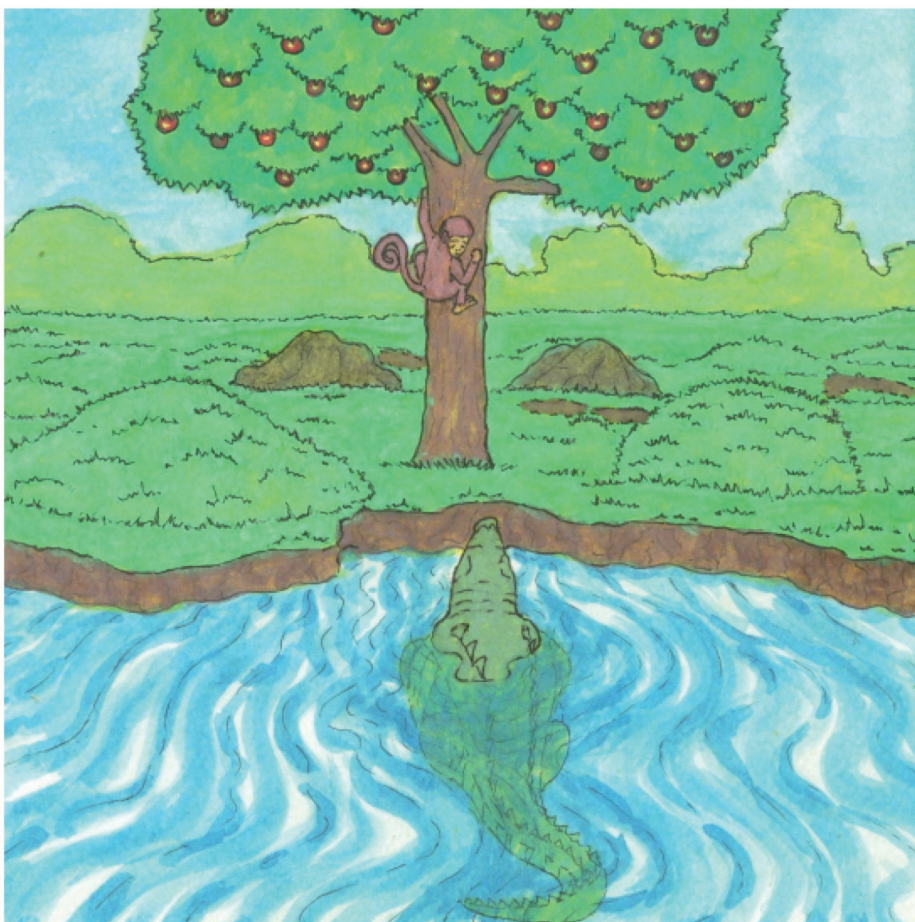
Loko N'wangwenya a ri karhi a hlambela, u byerile
N'wamfenhe hi n'wana wa yena loyi a vabyaka.

"Ku laveka ntsena xivindzi xa mfenhe ku n'wi horisa," ku vula
N'wangwenya hi rito ro vava.



“A wu fanele u ndzi byele hi nga si suka!” ku rila N’wamfenhe.

“Ndzi hlayisa xivindzi xa mina ensinyeni, a hi fambi hi ya xi teka,” ku vula N’wamfenhe.



N'wangwenya u hlamberile ku ya eribuweni ra nambu.

N'wamfenhe yi tlurile enhlaneni na ku tsutsumela ensinyeni.

N'wangwenya u rindzerile.



N'wangwenya u rindzerile nkarhi wo leha, kambe
N'wamfenhe a nga vuyangi.