



UNala noNaka bayokuba ngoogobityholo behamba neqela lesikolo.

Bamisa iintente zabo baze babukele ukutshona kwelanga.

“Aliselihle,” utsho uNala evuya.



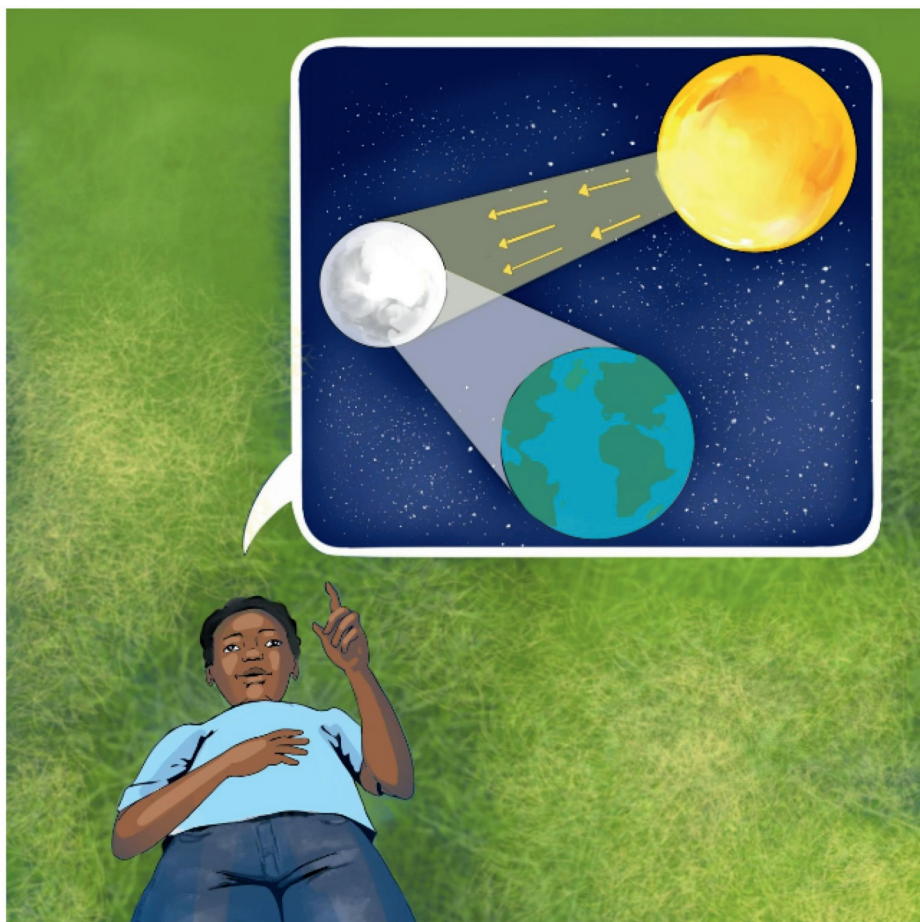
Babukela ilanga njengoko litshona entshona.

“Inyanga iphelele namhlanje,” kutsho uNaka njengoko ejonga inyanga iphuma empuma.

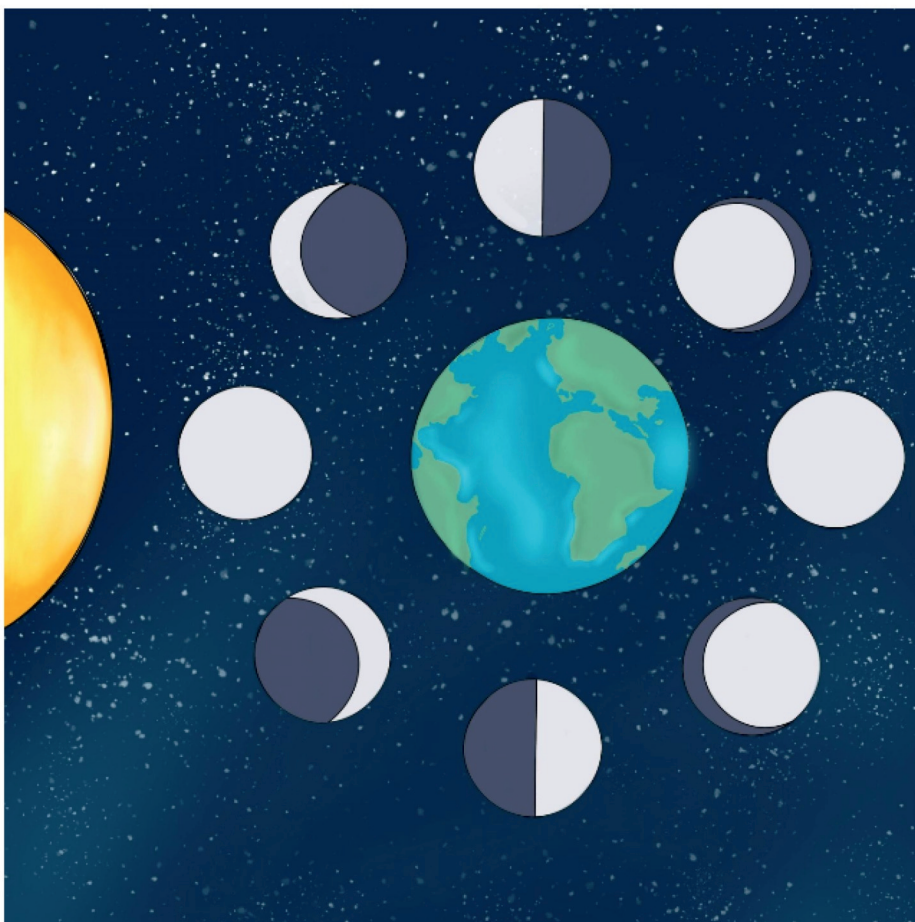


Aba bantwana balala ngomqolo baze babuke isibhakabhaka ebusuku.

UNaka uthi, "Yhu, aziseninzi iinkwenkwezi, zimenyezela njengeedayimani!"



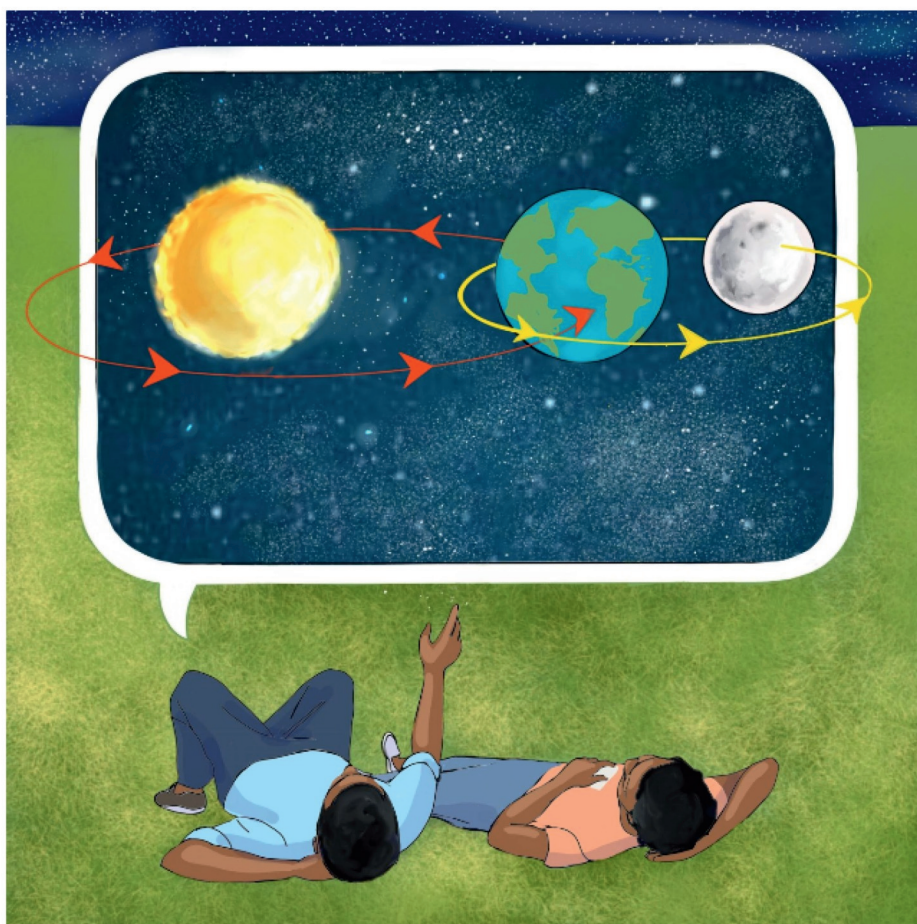
Uthi, “Inyanga iqaqambile kuba imele ukukhanya kwelanga. Xa iphelele kuxa ibonakala ngathi yonke inyanga iyakhanya.”



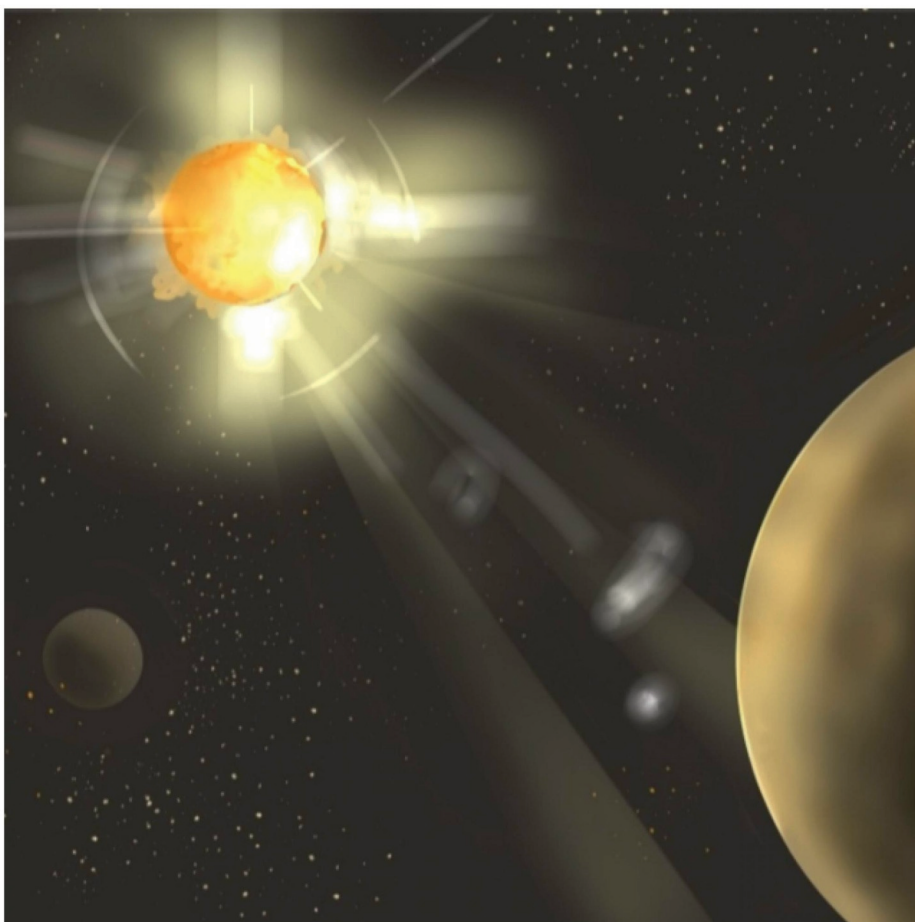
UNala uyavuma esithi, “Inyanga ijikeleza umhlaba. Ngamanye amaxesha siye sibone kuphela icala lenyanga likhanya, ibe libangathi yibhanana.”



Uqhubeka athi, “Xa iphelele ibangathi yibhola. Xa kuphela iintsuku zenyanga, sibona inyanga eyihafu, okanye efana nebhanana.”

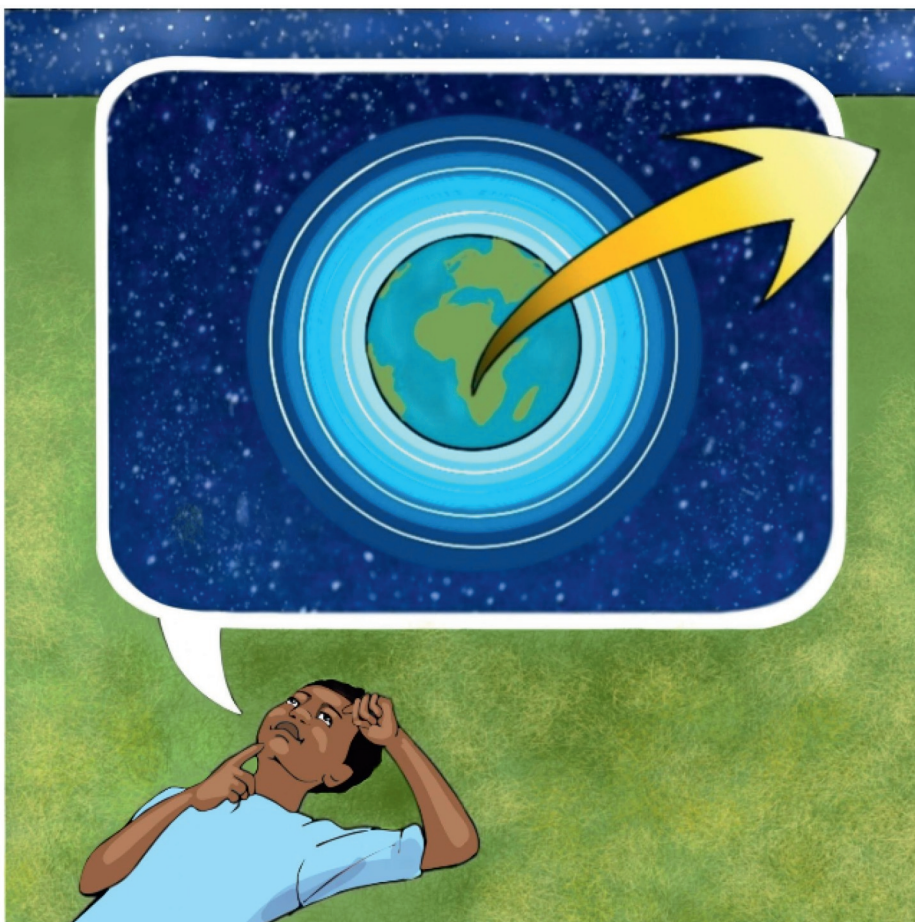


UNaka uphendula ngebhongo esithi, “Bendiyazi loo nto! Ndiyayazi nokuba inyanga ijikeleza umhlaba, zize zombini zijikeleze ilanga.”

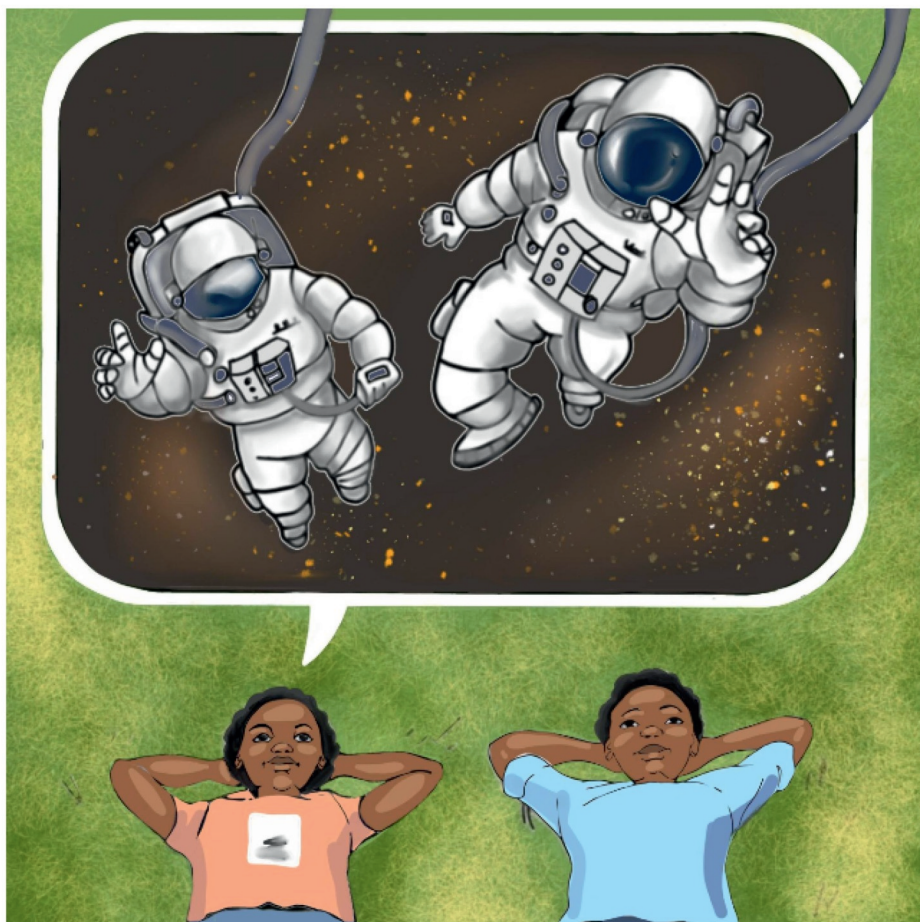


UNala uyancuma aze athi, “Ubusazi ukuba ilanga yinkwenkwezi?”

Wongeza athi, “Ilanga yinkwenkwezi enkulu eneegesi ezivuthayo, eziyenza ikhanye ize ibeshushu.”



UNaka uthi, “Xa zingekho izibane zasedolophini sisibona kakuhle isibhakabhaka ebusuku. Ngaphaya komoya ojikeleze umhlaba kusemajukujukwini, kodwa ingaba wona aphelela phi?”



UNala uyancuma esithi, “Sizakuba ngoosomajukujuku size sihambe ngesona siphekepheke sibaleka kakhulu. Siza kudlula ezona planethi neenkwenkwezi ezikude. Sakutsho sazi ukuba aphelela phi amajukujuku.”



—Imibuzo

1. Lithetha ngobani eli bali? Benza ntoni?
2. Yintoni inyanga epheleleyo? Yizobe.
3. Iphuma kweliphi icala inyanga?
4. Yeyiphi eyona nkwenkwezi isondeleyo emhlabeni?
5. Kukho iiplanethi ezisi8. Khangela amagama azo.
6. Zoba ilanga neeplanethi.