



UNaka noNala bakukhempu yesikole.

Bahloma amathende abo base bebuka ilanga lishona.

“Kuhle,” kusho uNala ngenjabulo.



Babuka ilanga liyoshona phansi lapho kuphelela khona amehlo entshonalanga.

“Inyanga igcwele namhlanje ebusuku,” kubuka uNaka njengoba inyanga ikhuphukela phezulu empumalanga.

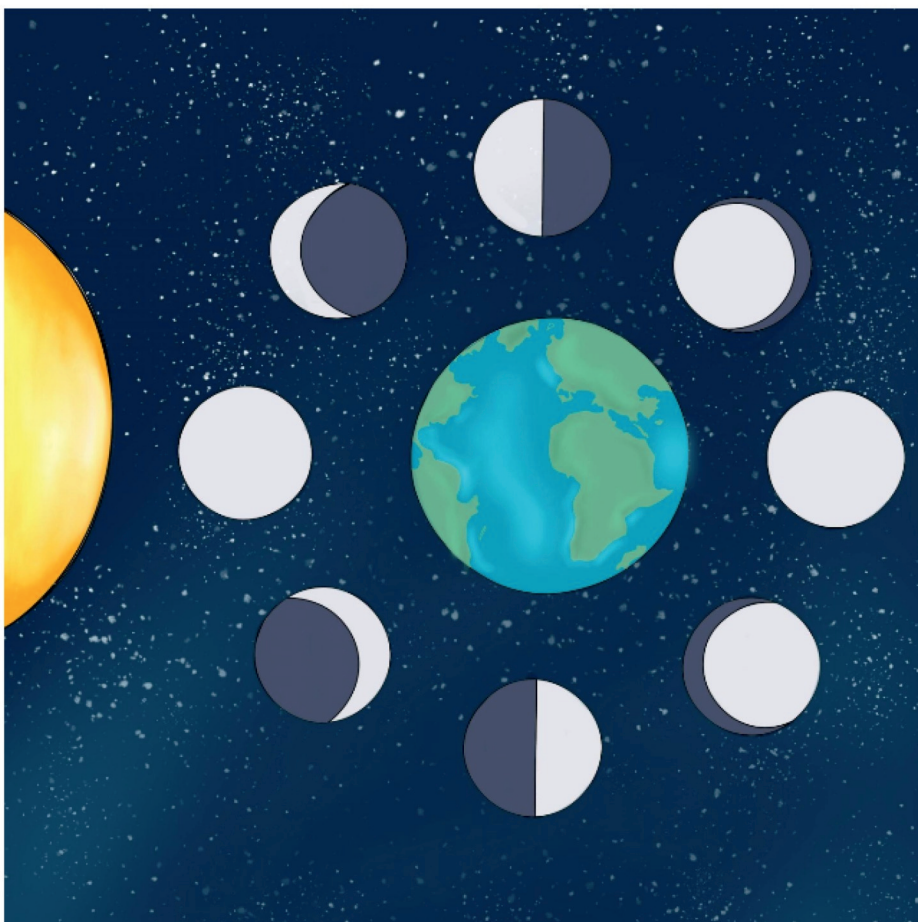


Abantwana balele phansi ngemihlane babheke phezulu esibhakabhakeni.

UNaka uyababaza, "Habe! Izinkanyezi eziningi kangaka, zicwebezela njengamayimane!"



Uthi, “Inyanga iyabenezela ngoba ikhombisa ukukhanya kwelanga. Uma inyanga igcwele, kubukeka sengathi yonke inyanga ikhanyisile.”



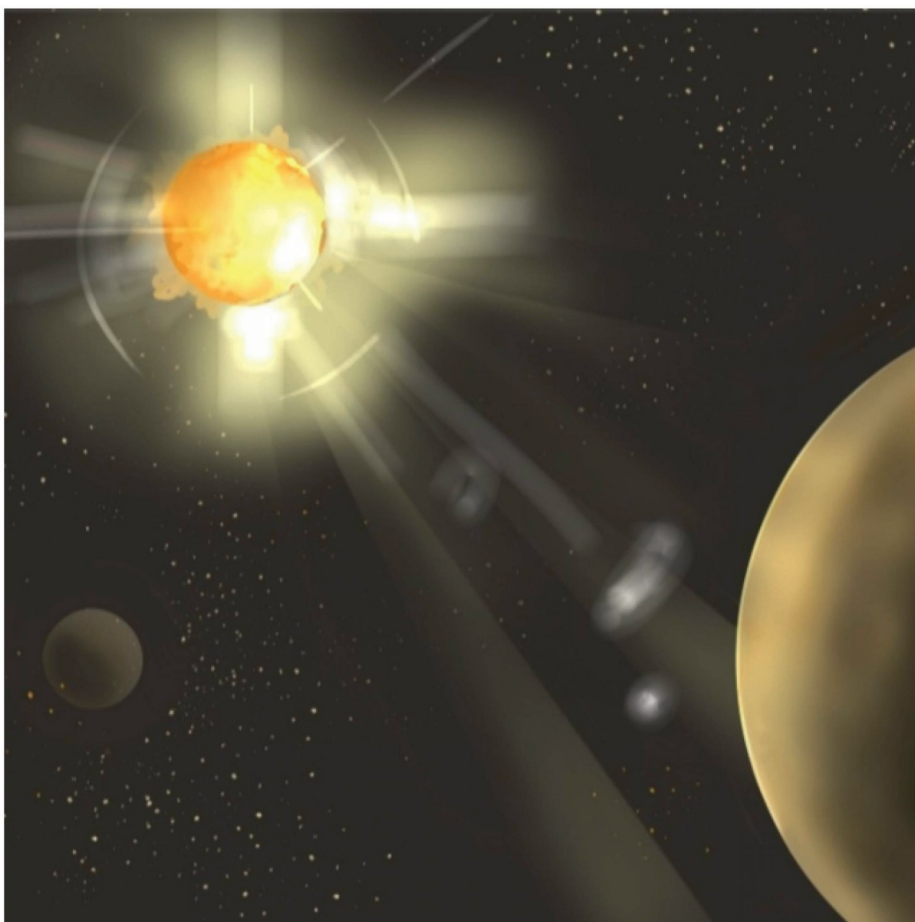
UNala uyavuma, “Inyanga ijikeleza umhlaba. Ngesinye isikhathi sibona ingxenye yayo ikhanyisa, ibukeka njengobhanana.”



Uyaqhubeka, “Inyanga ifana nebhola likanobhutshuzwayo uma igcwele. Njengoba isikhathi sihamba enyangeni, sibona inyanga ewuhhafu, naleyo emise okukabhanana.”

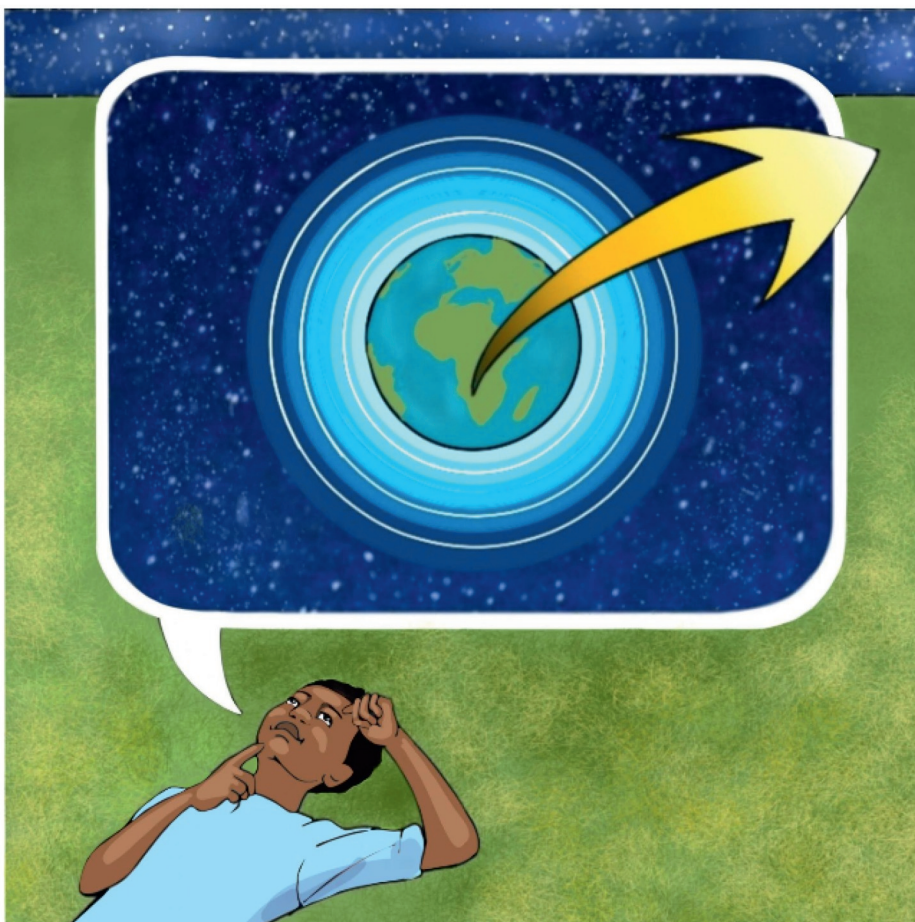


UNaka usho ngeqholo, “Bengikwazi lokho! Futhi ngiyazi ukuthi inyanga ijikeleza umhlaba, bese kuthi kokubili kujikeleze ilanga.”

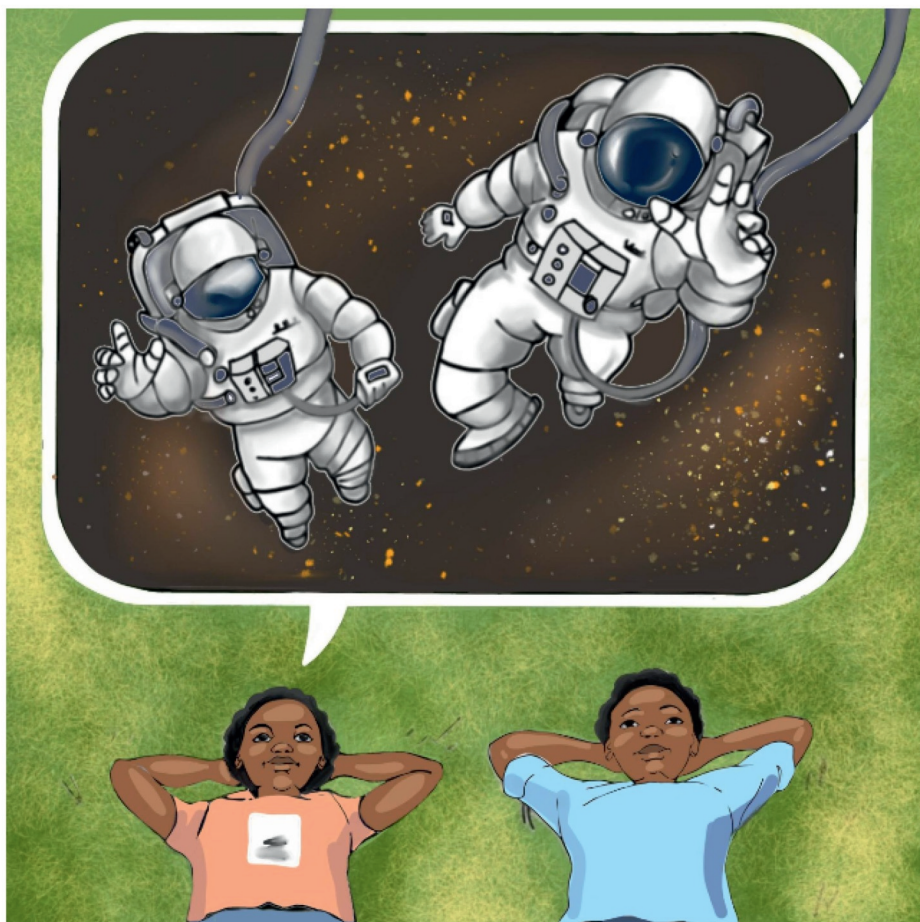


UNala emoyizela, “Ngabe bewazi ukuthi ilanga liyinkanyezi?”

Uyengeza, “Ilanga liyinkanyezi enkulu yamagesi avuthayo, enza ukukhanya nokushisa.”



UNaka uyaqabhekisisa, “Ngaphandle kwezibani zasemadolobheni, sisibona ngokucacileyo isibhakabhaka. Umkhathi uqala ngaphezu kongqimba lomoya ozungeze umhlaba, kodwa uphelela kuphi umkhathi?”



UNala emoyizela, “Sizoba ngosomkhathi sihambe ngomkhumbi-mkhathi oshesha kakhulu. Sizondiza sidlule amaplanethi nezinkanyezi ezikude kakhulu. Sizobe sesazi ukuthi umkhathi uphelela kuphi.”



—Imibuzo

1. Le ndaba iphathelene nobani? Benzani?
2. Yini inyanga egcwele? Idwebe.
3. Iphuma kuphi inyanga?
4. Iyiphi inkanyezi esondelene nomhlaba kakhulu?
5. Kukhona amaplanethi ayisishiyagalombili emkhathini, thola amagama awo.
6. Dweba isithombe selanga namaplanethi.