



Nala naNaka basekhempini nesikolwa.

Bavula emathende abo bese babuka kushona kwelilanga lokukhatimulako.

“Maye lihle,” kusho Nala ajabulile.



Babukela lilanga laze layoshona ngale enshonalanga.

“Kunenyanga legcwele lamuhla ebusuku,” kusho Naka njengobe inyanga ivela ngasemphumalanga.

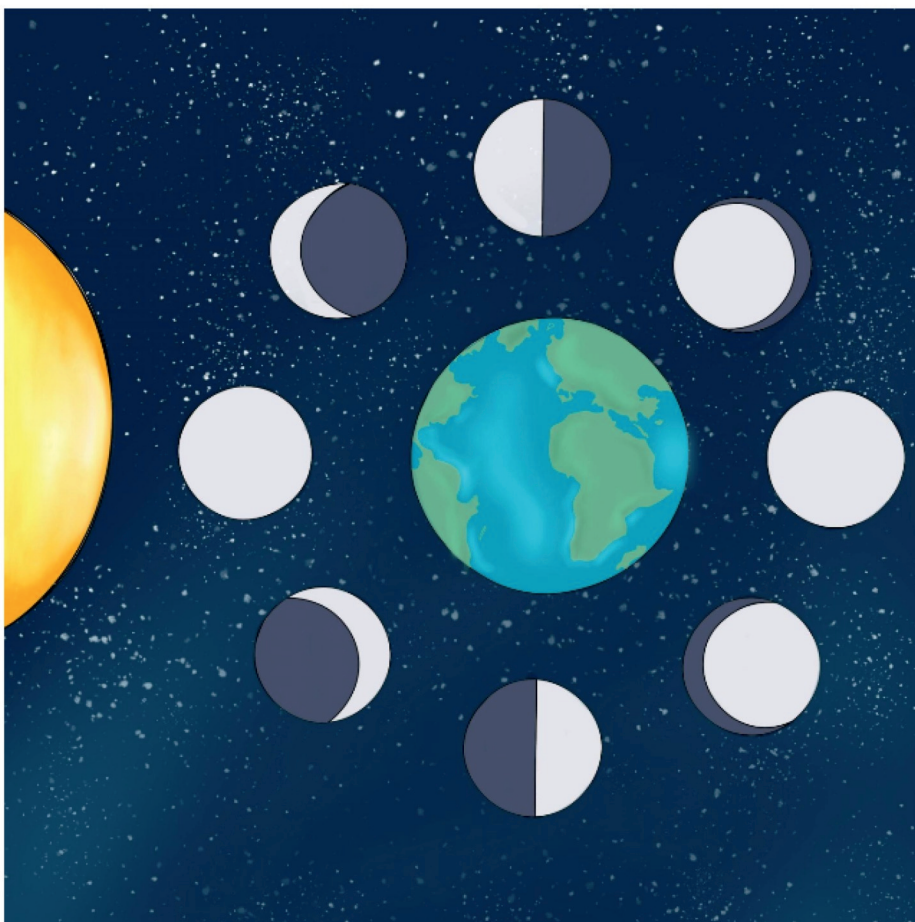


Labantwana balala ngemihlane base babukisisa sibhakabhaka ebusuku.

Naka uyababata, "Hawu, maye tinyenti tinkhanyeti, futsi tikhatimula sengatsi ngemadayimane!"



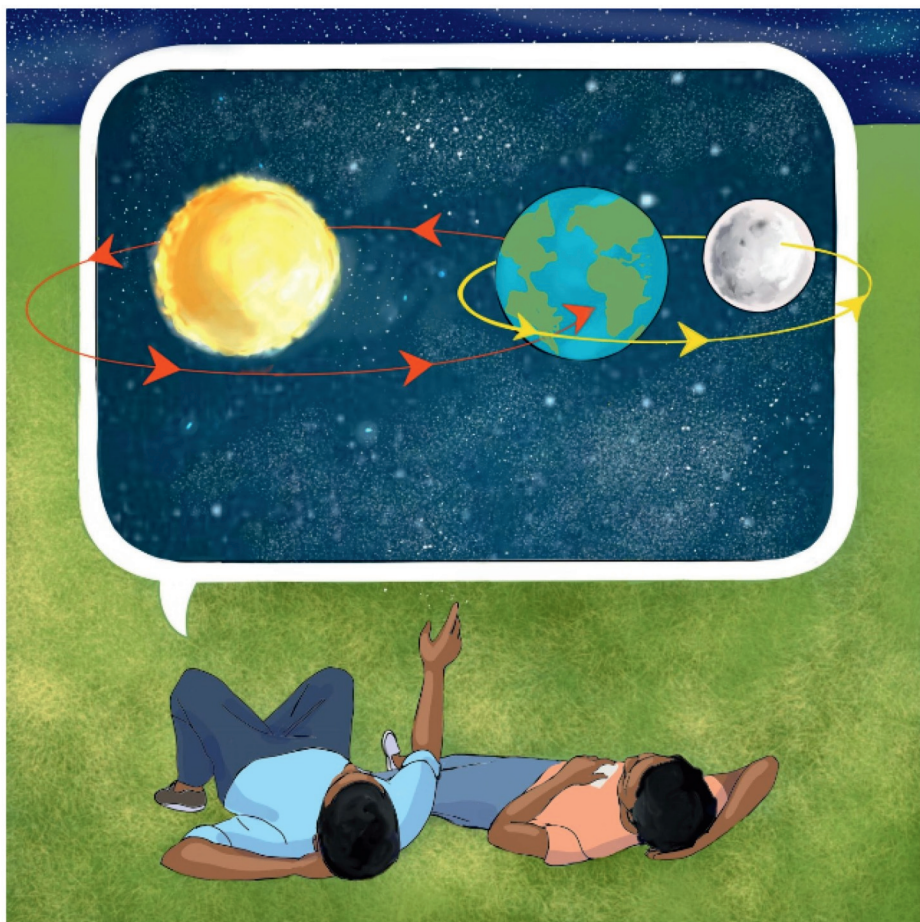
Utsi, “Lokwenta inyanga ikhatimule yingobe idvonsa kukhanya kwelilanga. Nangabe kunenyanga legcwele, kuba shengatsi yonkhe inyanga ibasiwe.”



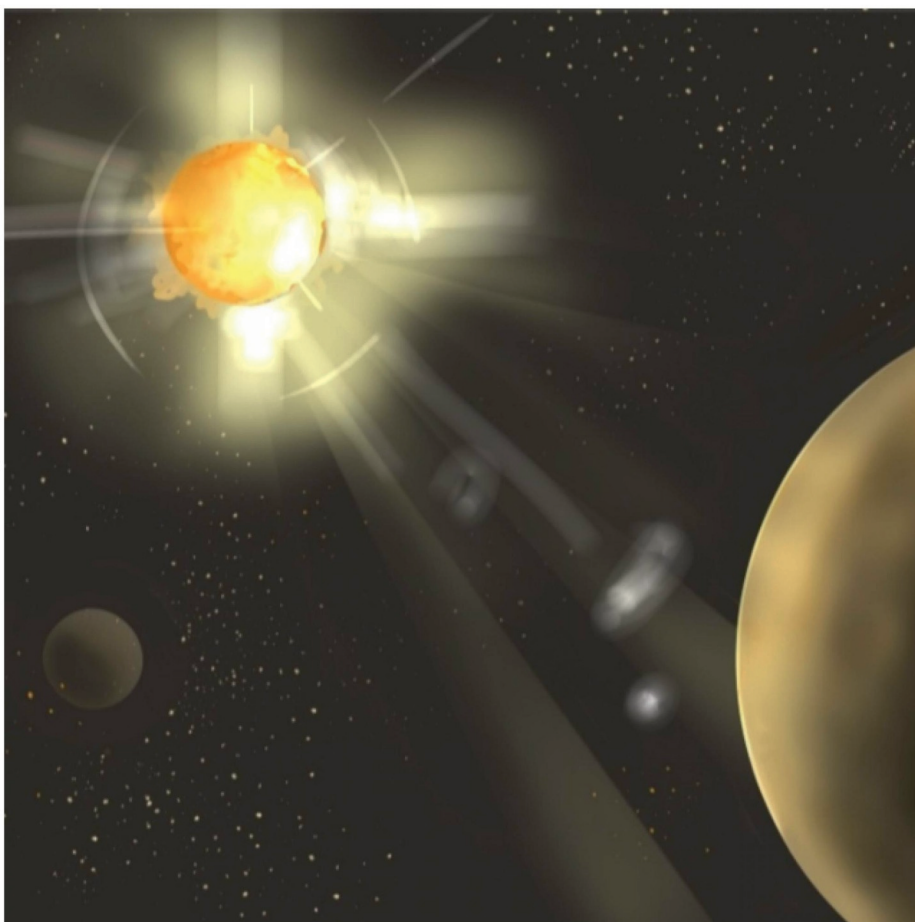
Nala uyavuma, “Inyanga ijikeleta emhlabeni. Ngaletinye tikhatsi sikhona kubona kukhanya kwencenye lencane yenyanga, futsi isuke ifanana nabhanana.”



Uyachubeka, “Inyanga ifanana nebhola nayigcwele.
Njengobe inyanga ichubeka, sibona inyanga leyihhafu,
lemise kwabhanana.”

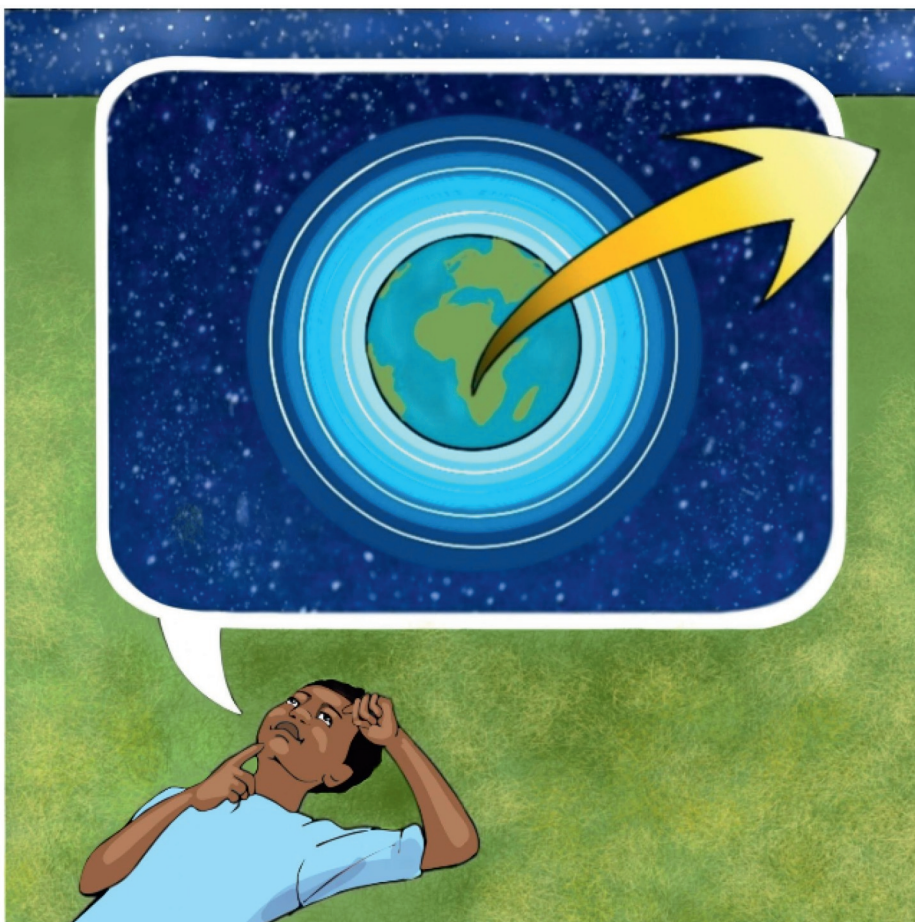


Naka usho ngecutigcabha, “Ngiyakwati loko! Ngiyati nekutsi inyanga ihamba itungelete umhlaba, futsi kona kokubili kutungeleta lilanga.”

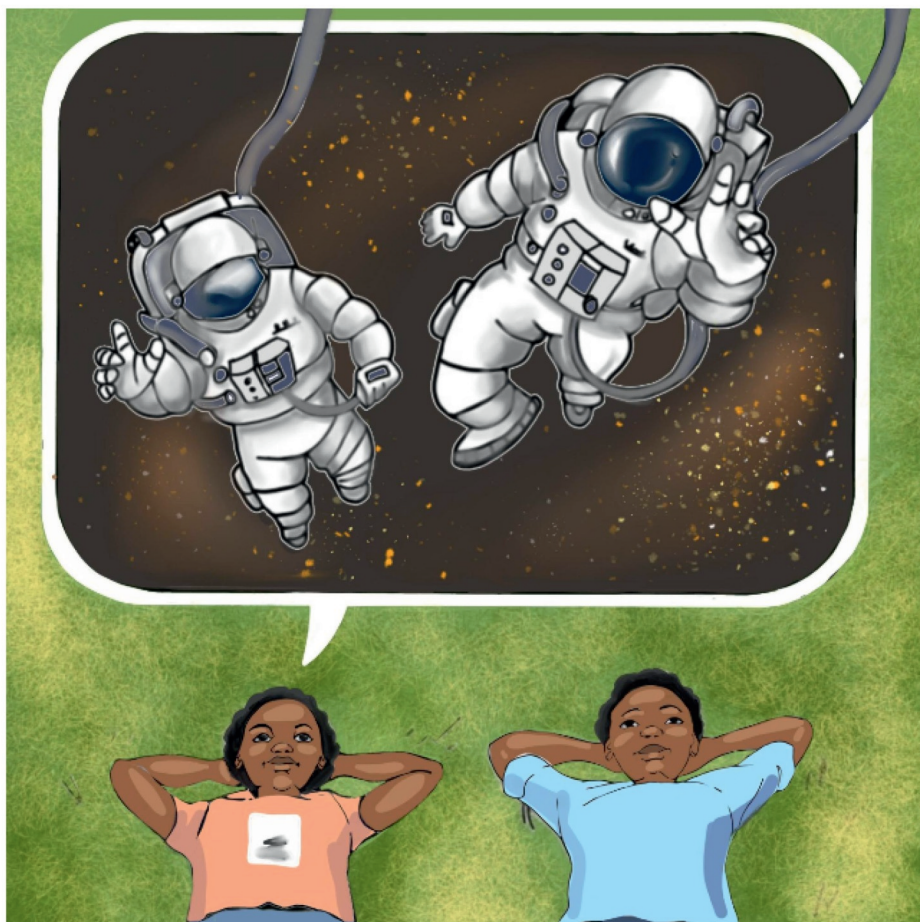


Nala uyamomotseka, “Bewati yini kutsi lilanga nalo liyinkhanyeti?”

Uyengeta, “Lilanga liyinkhanyeti lenkhulu lekipha emagesi lashisako, futsi liveta kukhanya nekushisa.”



Naka uyaphawula, “Natingekho tibani tasemadolobheni lamakhulu, siyakhona kusibona kahle sibhakabhaka ebusuku. Umkhatsi ucala ngetulu kwemoya lotungelete umhlaba, kepha uphelela kuphi umkhatsi?”



Nala uyamoyitela, “Kuncono sibe bosomkhatsi sindize sihambe ngendiza lenelitubane lelikhulu kakhulu. Sitawukhona kwendlula nemaplanethi netinkhanyeti letikhashane kakhulu. Sitobese siyati-ke kutsi umkhatsi uphelela kuphi.”



—Imibuto

1. Lenzaba ikhuluma ngabobani? Yini labayentako?
2. Iyini inyanga lephelele? Yidwebe.
3. Iphuma ngakuphi inyanga?
4. Nguyiphi inkhanyeti lesedvute kwemhlaba?
5. Kunemaplanethi langu-8. Tfola emagama awo.
6. Dweba sitfombe selilanga nemaplanethi.