



Kgaitadiake, Sello, ke susu.

O bua a dirisa Puo ya Matshwao.

Fa re tsoga, re a dumedisana.

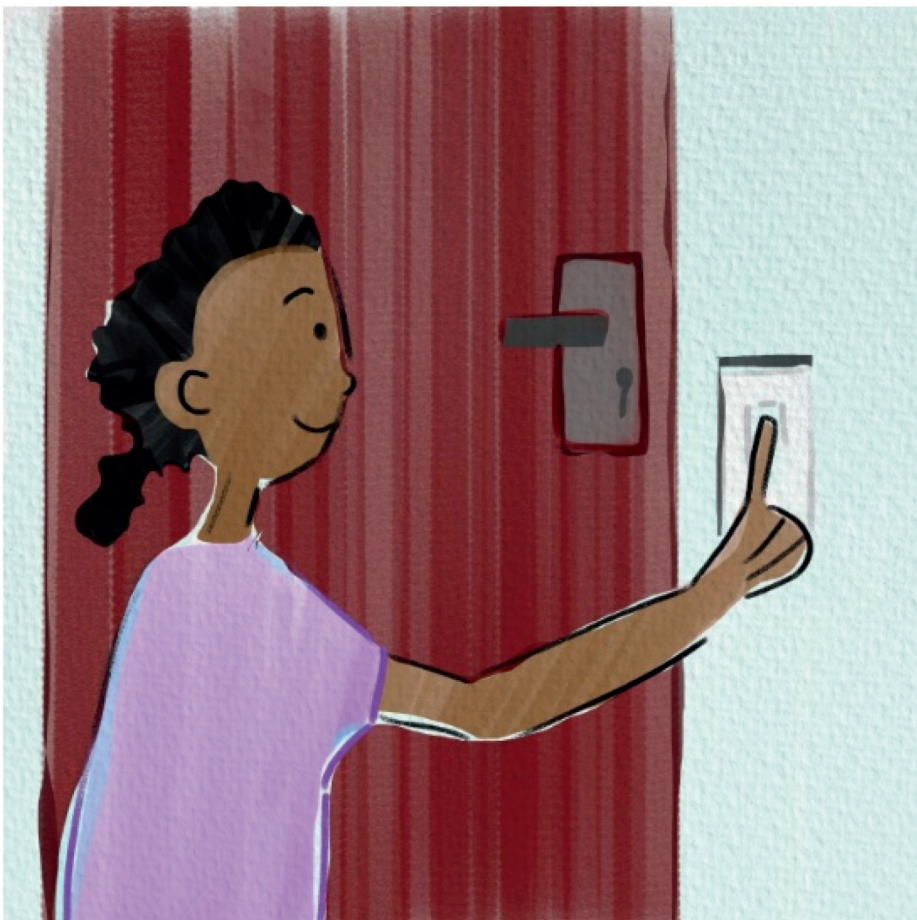
“Madume!” re bua ka matshwao.



Fa re fepa ditlhapi tsa rona, Sello o bua le tsone ka matshwao.

“Dumelang, le kae?” a botsa.

O tlotla le tsone ka Puo ya Matshwao.



Fa ke ntse ke letile kwa ntle ga phaposibotlhapelo nako e telele, ke tshuba le go tima lebone la phaposibotlhapelo gantsinsi.

Ke bolelela Sello, "Hee, e setse e le sebaka sa me!"



Re feela setupu le go kumola mefero mo tshingwaneng.

“Bona, sebokonyana!” ke bua ka matshwao le Sello.

Re ithuta ka diboko kwa sekolong.



Moragonyana mo letsatsing, mmaarona o a re roma.

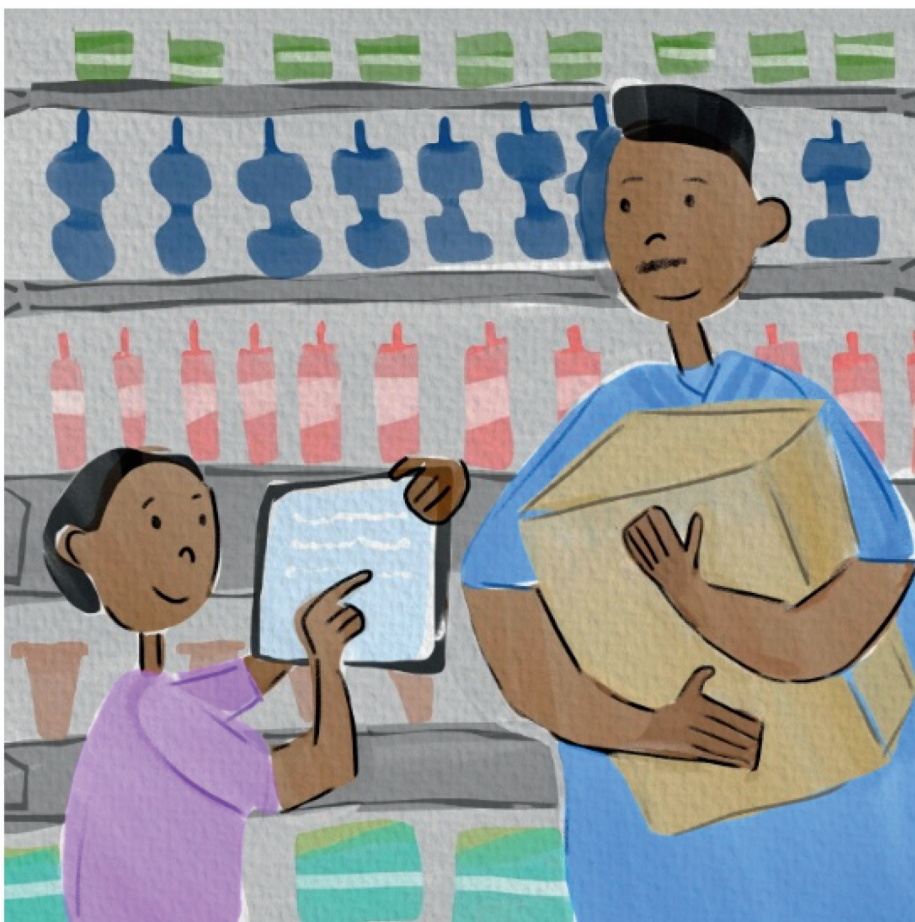
“Tweetswee rekang maši le sukiri, ke tlaa baka kuku,” o bua ka matshwao.



Fa re fitlha mo tseleng, ke simolola go e kgabaganya.

Sello o tshwara letsogo la me.

O bua le nna ka matshwao, "Ema pele! Gakologelwa go tihola pele!"



Kwa lebenkeleng, re a kgaogana.

Sello o bona sukiri, ke bona maši.

Sukiri e mo mabeelong a a kwa godimodimo thata mo go Sello.

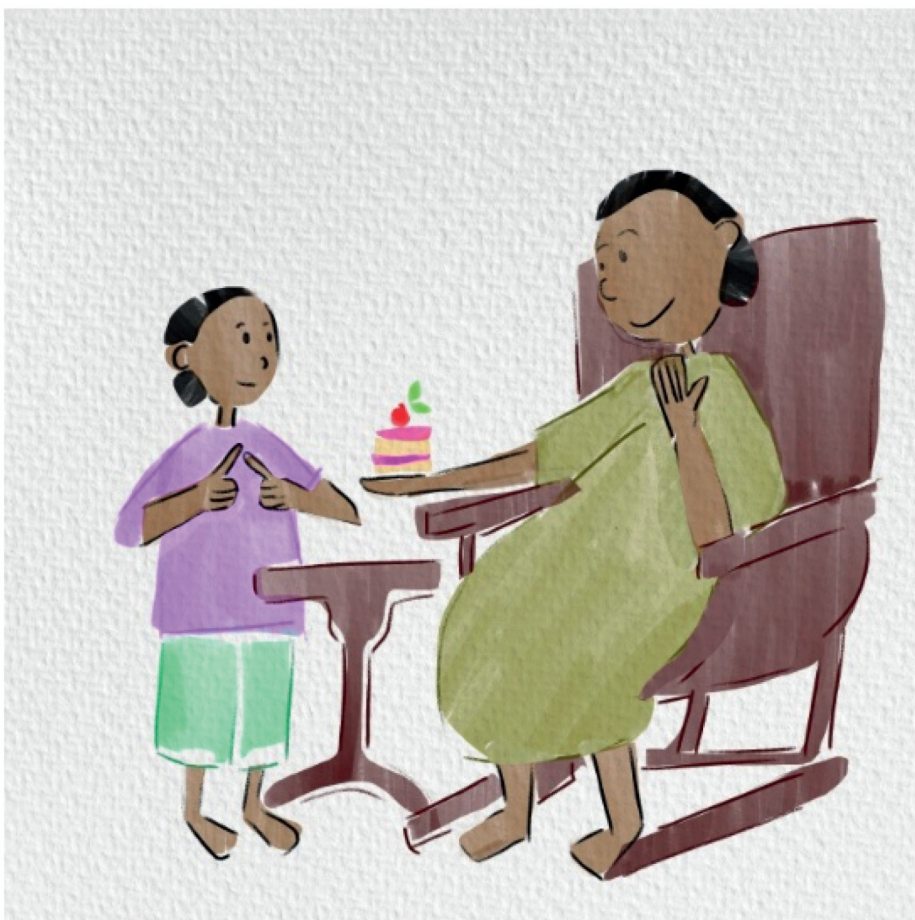


O kopa thuso mo mogolong.

Mme fela mogolo ga a tthaloganye Puo ya Matshwao.

Sello o kwala potso ya gagwe mo bukaneng e e mo go ene.

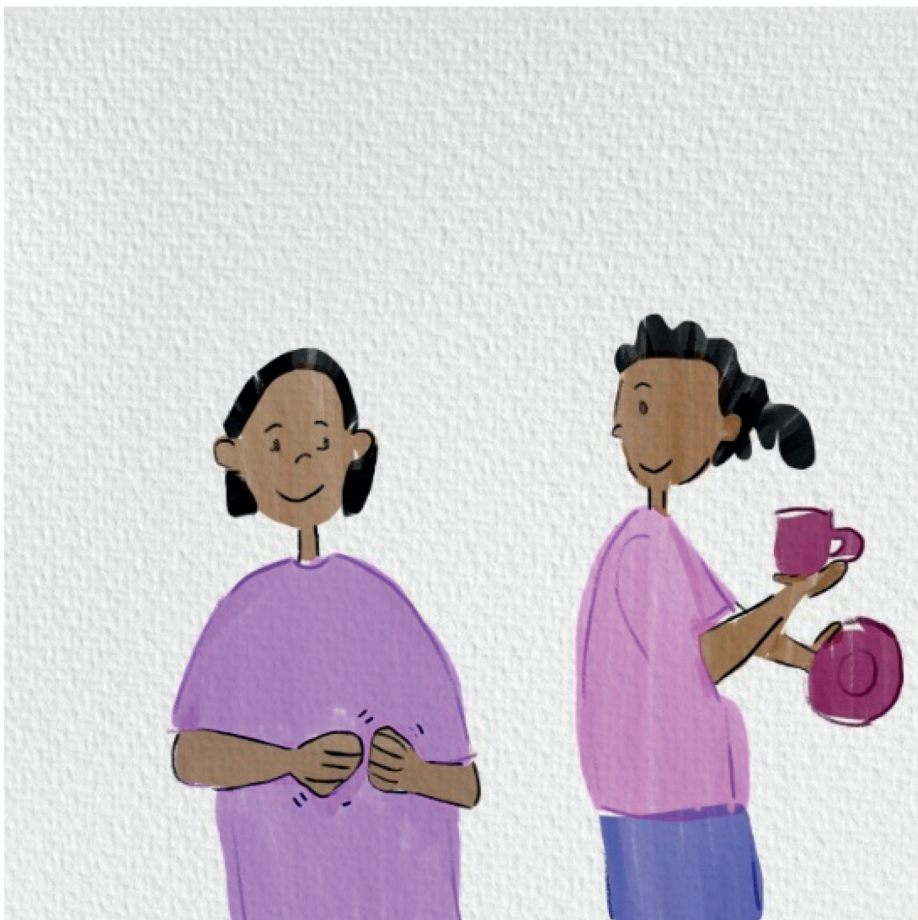




Kwa gae, re baka kuku le mmaarona.

Fa e fodile, re aesa kuku.

"Monate!" Sello o bua ka matshwao fa a utlwa tatso ya aising.



Re dira tee le go tshelela koko wa rona.

“Ke a leboga,” koko wa rona o bua ka matshwao.

“Go leboga nna,” ausi wa me o bua ka matshwao.



Morago ga teye, re tlosa dilo mo tafoleng.

“O tlhatswa dijana!” Sello o bua ka matshwao.

Bosigo joo, re tlamparelana pele re robala.

“A e nne boroko,” re buisana ka matshwao.



Puo ya Matshwao

Puo ya Matshwao ke puo ya konokono ya Bosusu.

Mme mongwe le mongwe a ka e ithuta.

Go bua ka matshwao go tshwana le puo epe e nngwe, ntle le gore ga e na medumo.