



Andile Mji unguchwepheshe wesifundvo setibalo.

Lenzaba imayelana nesikhatsi Andile
asengumfana, nekutsi wakufundza njani kutsandza
tinombolo.



Andile watalelwa eGqeberha, eMpumalanga Kapa.

Bekahlala namake wakhe nababe wakhe. Bebahlala eNew Brighton.

Dvutane nalapho, bekunenzawo lebitwa ngekutsi kuseTyeni. Mkhulu wakhe abehlala khona.



Andile bekatsandza kuvakashela mkhulu wakhe, lobenesibaya setinkhomo.

Mkhulu wakhe bekambuta atsi, "Tingaki tinkhomo letindvuna, futsi tingaki letinsikati? Tingaki tinkhomo letisesibayeni?"

Andile wacale wafundza kubala afike ku-10 ngeminwe yakhe. Wase ufundza kubala afike ku-20, ngetintwane takhe! Ngemuva kwaloko wafundza kubala ngakuhlenu.



Entsatsakusa, kwakhala lichudze. Bekuyinsimbi yesihlanu ngesikhatsi bavuka. Balungela kuyosenga tinkhomo.

Ngemuva kwaloko, baya edlelweni letinkhomo lelisentsabeni lesedvutane.

Bebavame kubuka lilanga kute bati kutsi sengubani sikhatsi.



Emini, mkhulu wakhe bekambita kutsi ete atokudla. Sikhatsi bekusuke kuyinsimbi yelishumi nakubili.

Bekasati sikhatsi sekuya ekhaya. Bekungesikhatsi sekushona kwelilanga.

Bekabala tinkhomo kute abone kutsi tonkhe tibuyile.



Ngesikhatsi Andile sekacale esikolweni, babe wakhe wamtsengela liwashi.

Bekasebentisa liwashi lakhe kute abale ngakubili, ngakutsatfu nangakune.

Liwashi lakhe belinetinombolo leticala kukunye lite liyofika kulishumi nakubili.

Andile bekakwati kubala tintsi letisho li-awa, ihafu yeli-awa, kanye nemaminithi lasemkhatsini.



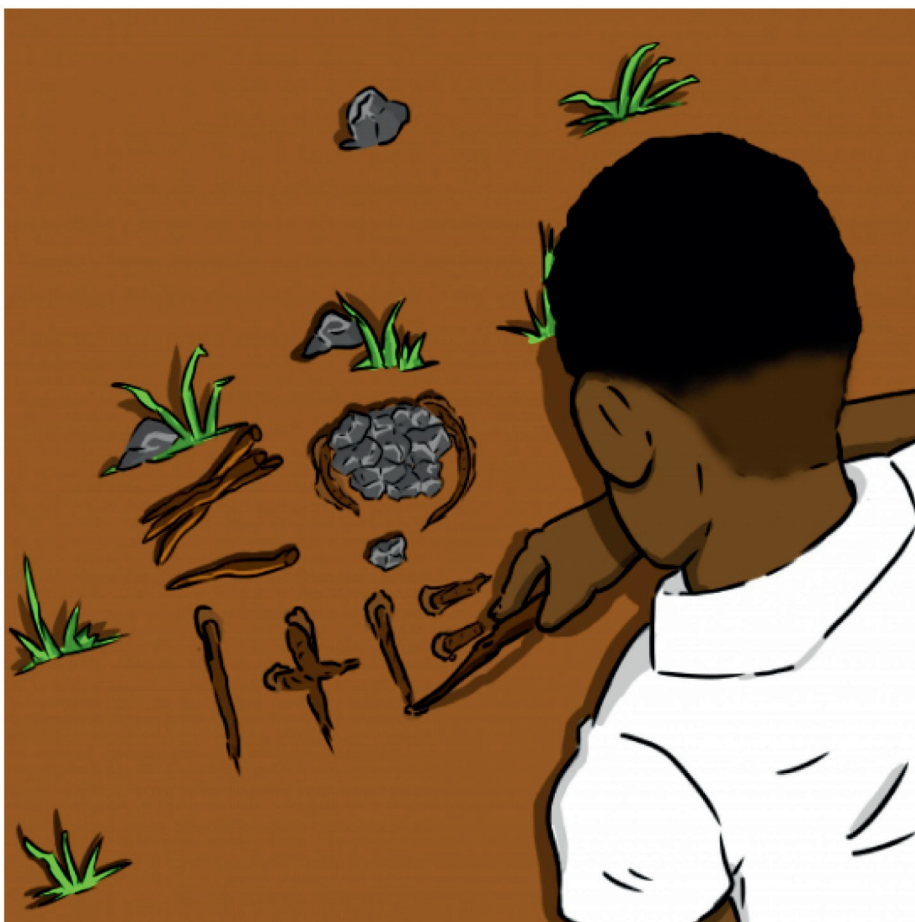
Andile bekakwati kuhlanganisa tinombolo ngenhloko.
Bekakwati kubala aye embili nobe aye emuva ngenhloko.
Ngasikhatsi tinkhomo titala. Andile bekabala ematfole.
Bekakwati kubala aphindze asho emalanga eliviki
netinyanga temnyaka, ngekulandzelana.



NgaboLesihlanu, bekapakisha sikhwama sakhe kute ayovakashela mkhulu futsi bekahlala lapho ngeMgcibelo nangeLisontfo.

NgeMsombuluko, bekabuyela ekhaya kute aye esikolweni.

Nakuvalwa ticolwa, bekahamba ayovakashela mkhulu.



Ngesikhatsi Andile acala esikolweni, bebasebentisa ematje netintsi nababala.

Bekasebentisa iminwe yakhe kute abhale emhlabatsini. Bekahlanganisa tinombolo emhlabatsini.

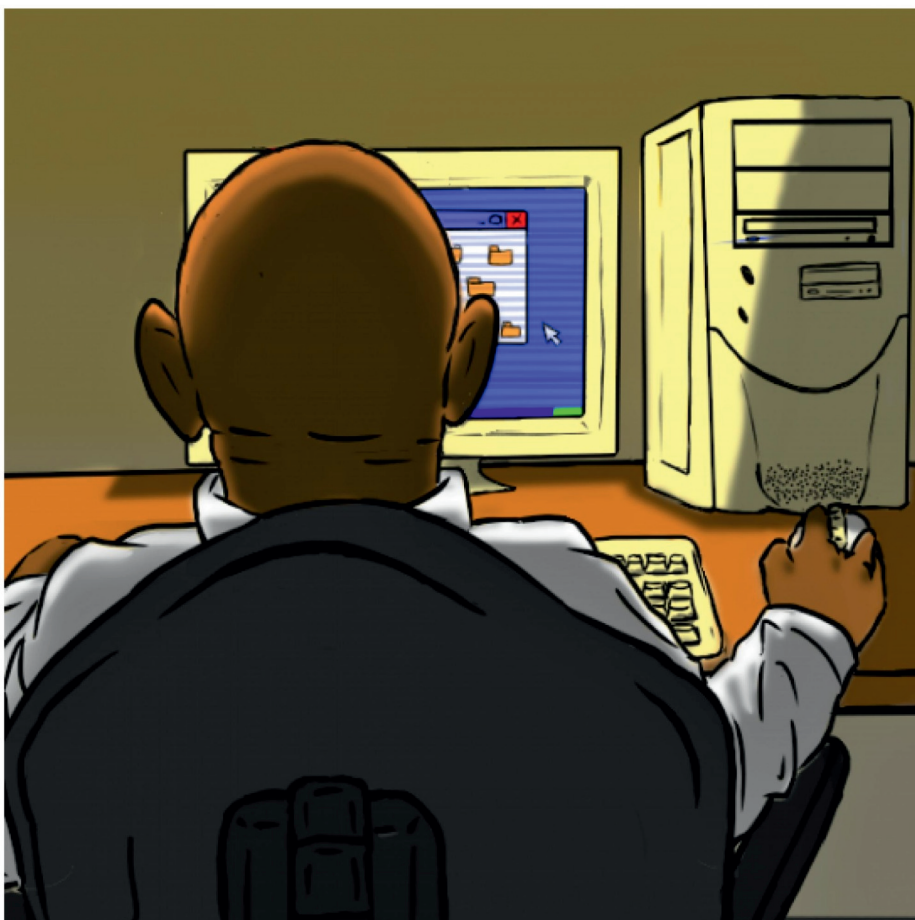
Likilasi labo belingephansi kwesihlahla. Nalina, bebangkwati kuya esikolweni.



Nasakhulile lomfana waseBrighton, waya kuyofundzela tibalo enyuvesi. Wafundza iminyaka leminyenti.

Phrofesa Mji usebenta emkhakheni wetibalo lobitwa ngekutsi yi-statistics.

Usakwati kusho sikhatsi njengakadzeni, ngekutsi abuke lilanga.



Lamuhla, Andile Mji unguPhrofesa. Usebentisa iminwe yakhe kungcondvomshini.

Usebentisa tinombolo nemagrafu kute acoce tindzaba. Usebentisa tibalo kute acatulule tinkinga.

Usebentisa i-statistics kute aphenzvule imibuto lenjengekutsi, 'Ngusiphi sibalokhatsi seminyaka yebantfwana labakulesikolwa?'



Phrofesa Mji usebenta ngabongcondvomshini nangetinombolo.

Utsi, “Bongcondvomshini balusito lolukhulu, kepha ngaletinye tikhatsi bayalimala! Lwati lwami luhlala lusengcondweni yami kute kube sekugcineni.

Etibalweni, kute lokushintjako. Tibalo tihlale titibalo.”



Nangu umlayeto waPhrofesa Mji lota kuwe:

“Kute utati tibalo, kufanele utetayete kusebenta ngetinombolo.

Sifundvo setibalo sisho kwati ‘kwenta’. Tibalo yindlela yekwenta. Kufanele ufundze kucabanga ngetibalo.

Nawenta njalo utawuphumelela!”



—Imibuto

1. Andile wacala njani kufundza ngetinombolo nekubala?
2. Ingabe kubalulekile yini kufundza kubala ungasebentisi ngcondvomshini nobe sibali? Chaza imphendvulo yakho.
3. Bala ufike eshumini nakubili usebentisa kuphindza ngakubili, ngakutsatfu kanye nakune. Bese ubala uya emuva!



—Tincwadzi letikuloluchungechunge

- Andile Mji
- Asnath Mahapa
- Bongani Mayosi
- Charlotte Maxeke
- Mmantsane Moche Diale
- Mulalo Doyoyo
- Tebello Nyokong
- Tshilidzi Marwala



Lenzaba icanjwe yaphindze yabhalwa
ngeSetswana, njengencye yeprojekthi yetintfo
tekufundza te-Zenex Ulwazi Lwethu ya-2020.