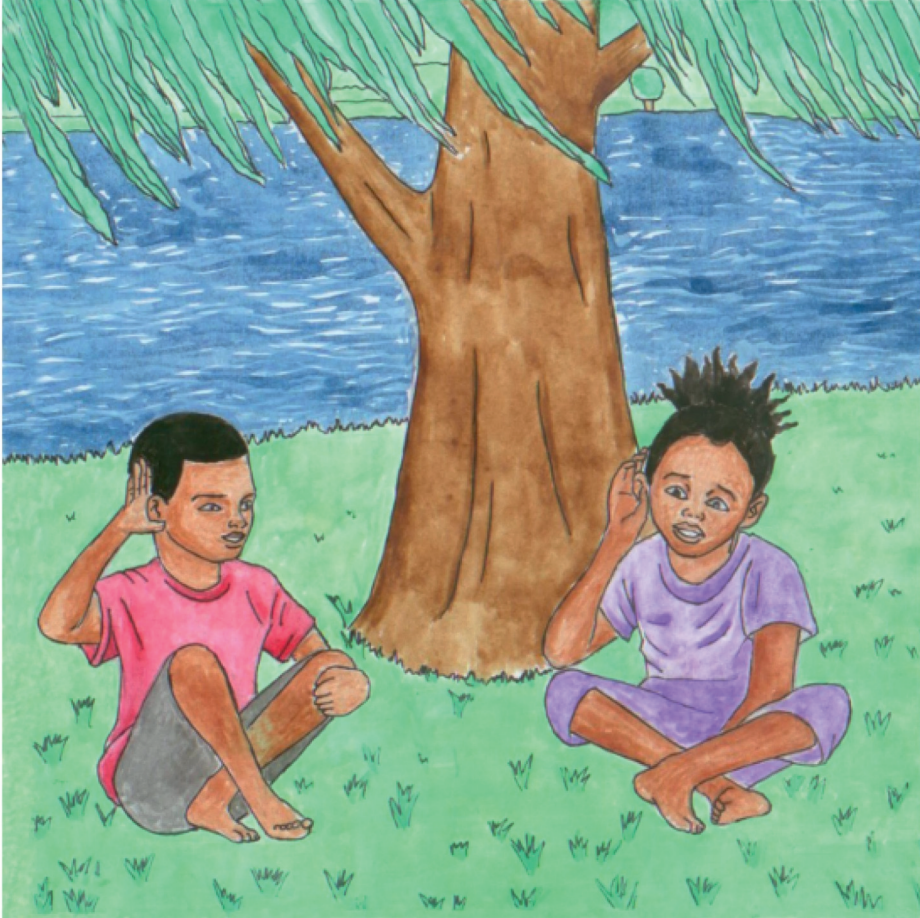




Naka le Nala ba dutse thoteng e ommeng tlasa sefate.

Nala o utlwa mahlaku a tsitsinyehang ha a utlwa moya o phodileng.



“Mamela Naka. Na o utlwa mahlaku a sefate?” ho botsa Nala.

“Ee, ke ya a utlwa ebile ke bona ha a sisinyeha,” ho araba Naka.



“Na o ya hopola hore ke eng se bakang ho sisinyeha ha mahlaku?” ho botsa Naka.

“Ke ha moya o fefola dintho,” Nala a araba.

“Ke nahana hore ke moya,” Naka araba.

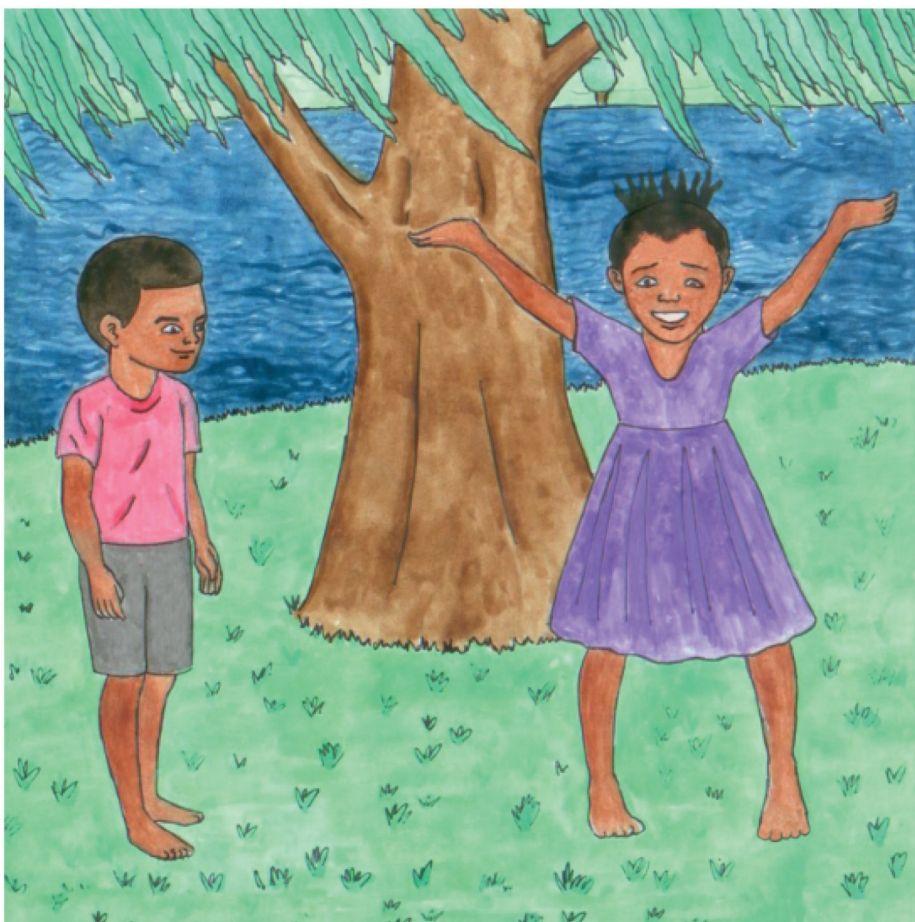




“Re potapotilwe ke moya o sa bonahaleng...” Nala a qala.

Naka o mo kena hanong, “Empa re bona le ho utlwa mahlaku a sisinyeha!”





Nala o tswela pele, "Moya ha o bonahale empa re bona le ho utlwa diketso tsa moya."

"Ke moya o fokang?" ho botsa Naka.



“Ee,” Nala a bosesela.

O tswela pele, “Moya o na le marothodi a metsi marung. Ha marothodi ana a eba boima, a rothela fatshe jwaloka pula.”



“Akanya re se re nyolohela marung ka baluni ya moya o tjesang. Baluni ena e tshwana le lerothodi la metsi le fuperweng ke moya,” ho rialo Nala.

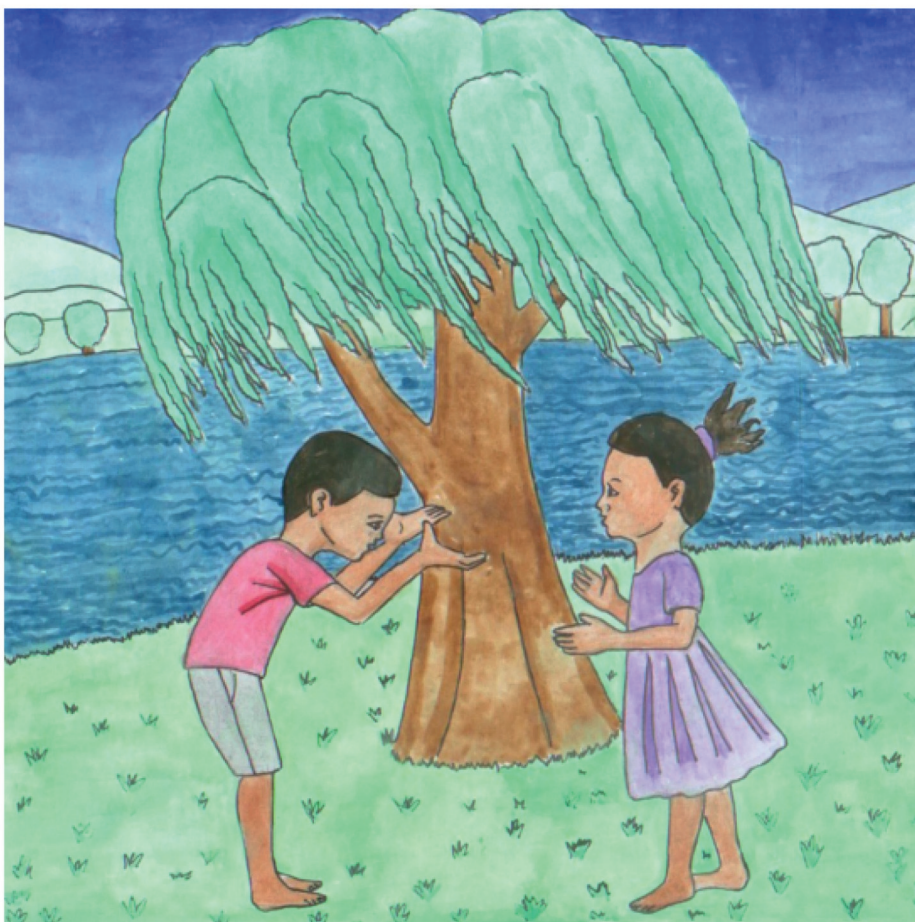




“Re hema moya,” ho hopola Naka

“Ee, hore diphoofolo le dimela di phele, di hloka moya,” ke Nala yeo.

“Kaofela re hloka moya o hlwekileng,” ho dumela Naka.



"Ha re bone moya, empa o bopilwe ka eng?" ho botsa Naka.

"Moya ke motswako wa digase le lerole," ho araba Nala.



“Lefatshe le phuthetswe ke moya,” ke Nala yeo.

“Moya o re pota-potile. Moya wa lefatshe o tloha mona ho fihlela hodimo,” o bontsha ka matsoho.





—Dipotso

1. Pale ena e bua ka mang?
2. Ba ho kae?
3. Ke eng tse hloakang moya hore di phele?
4. Moya o entswe ka eng?
5. Moya o ho kae?
6. Pula ena hobanang?
7. Moya ke eng?
8. Fumana pale ya moya.
9. Moya o hlwekileng ke eng?