



Naka naNala basesigangeni lesinetjani lobomile, bahleti ngaphasi kwesihlahla.

Nala uva emacembe anyakatiswa kancane ngumoya lohusha kamnandzi.



“Lalela Naka. Uyaweve yini lamacembe?” kubuta Nala.

“Yebo, ngiyaweve emacembe futsi ngiyawabona anyakata,”
Naka uyaphendvula.



“Usakhumbula kutsi yini leyenta emacembe anyakate?”
kubuta Naka.

“Anyakatiswa kuhhusha kwemoya,” kuphendvula Nala.

“Yebo ngumoya,” kusho Naka.



“Umoya ukhona yonkhe indzawo, kepha tsine asikwati kuwubona...” Nala uyacala.

Naka uyamphatamisa, “Kepha siyakwati kuwabona nekuweva emacembe anyakata!”



Nala uyachubeka, “Asikwati kuwubona umoya, kepha siyakwati kubona nekuva umoya nawuvunguta. Loko kubitwa ngekutsi ngumoya lohushako.” “Umoya lohushako, ngumoya yini?!” Naka uyabuta.



“Yebo,” kumoyitela Nala.

Uyengeta, “Umoya uphindze ubambe ematfonsi emanti emafini. Nangabe asasindza kakhulu lamanti lasemafini, abese ayancibilika abe yimvula.”



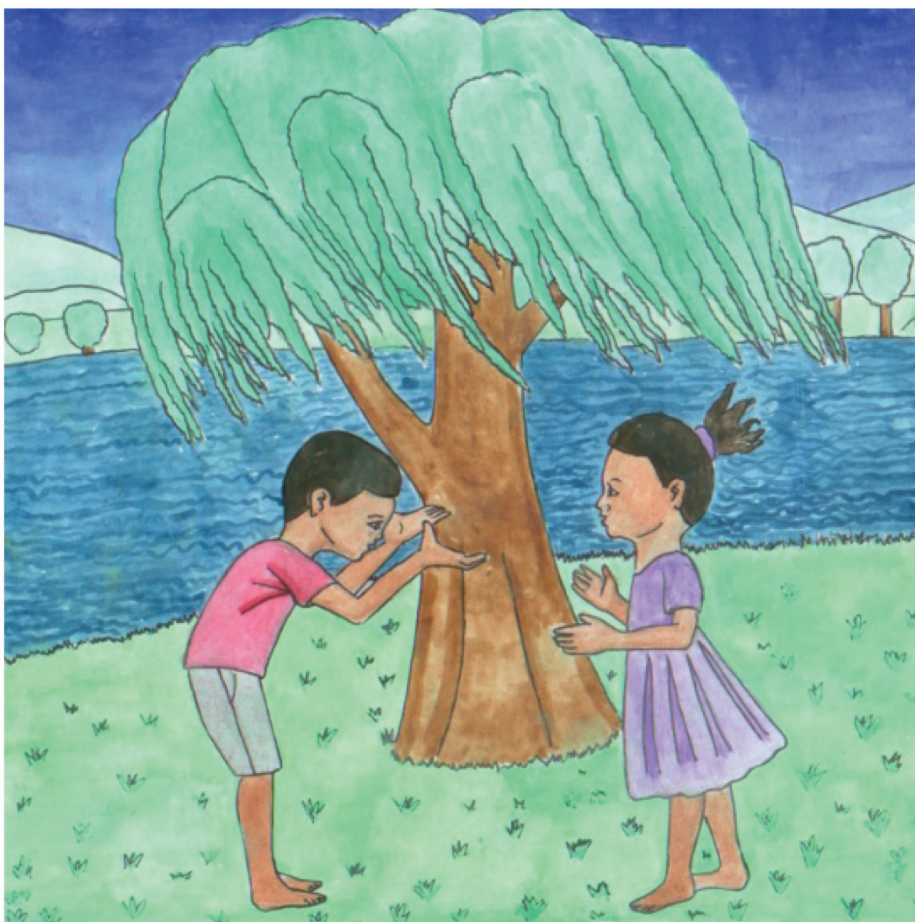
“Asewucabange nje sekungitsi lesenyukela esibhakabhakeni ngebhaloni lenemoya lohisako. Lebhaloni ifanana nematfonsi emanti, umoya ngiwo lowakhuphulela etulu,” kusho Nala.



“Siphindze siwuphefumule umoya,” kukhumbula Naka.

“Yebo, tonkhe tilwane netitjalo tidzinga umoya kute tiphile,” kusho Nala.

“Sonkhe siyawudzinga umoya lohlantekile,” kuvuma Naka.



“Njengobe nje singakhoni kuwubona umoya, wentiwe ngani?” kubuta Naka.

“Umoya wentiwe ngemagesi lehlukahlukene netinhlaiyane letincane telutfuli,” kuphendvula Nala.



“Umhlaba utungeletwe ngumoya,” kusho Nala.

“Umoya usitungelete yonkhe indzawo. Lomoya wasemhlabeni usuka lapha uye emkhatsini,” welula imikhono yakhe.



—Imibuto

1. Lenzaba ikhuluma ngabobani?
2. Bakuphi?
3. Ngubani lodzinga umoya kute aphile?
4. Wakhiwe ngani umoya?
5. Utfolakala kuphi umoya?
6. Yini leyenta ane ematfonsi emvula?
7. Uyini umoya lohushako?
8. Tfola indzaba lekhuluma ngemoya lohushako.
9. Uyini 'umoya lohlantekile'?