



# Maikhutšo a Alina

Sponono Mahlangu

Khanyisa Masemola

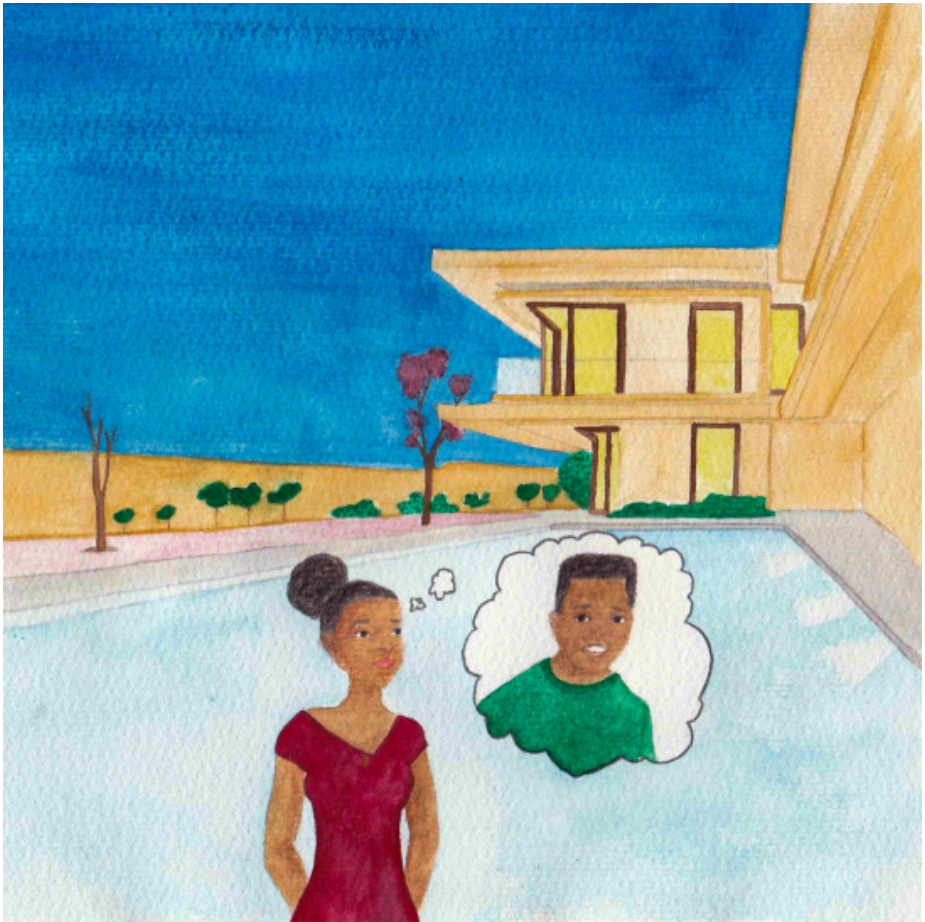




Toropong ya gešo, go be go na le mosadi wa mohumi wa go bitšwa Alina.

Alina o be a dula ntlong ye kgolo mo motseng wo mobotse.

O be a na le dilo ka moka, fela a se na lethabo.



Ka tšatši le lengwe, Alina o be a sepela sepela motseng wo a dulago go wona.

A myemyela ge a nagana, “Ke rata go kopana le batho ba baswa. Mohlomongwe ke tla kopana le bona ge nka ya maikhutšong. Mohlomongwe ke tla kopana le yo a kgethegilego.”

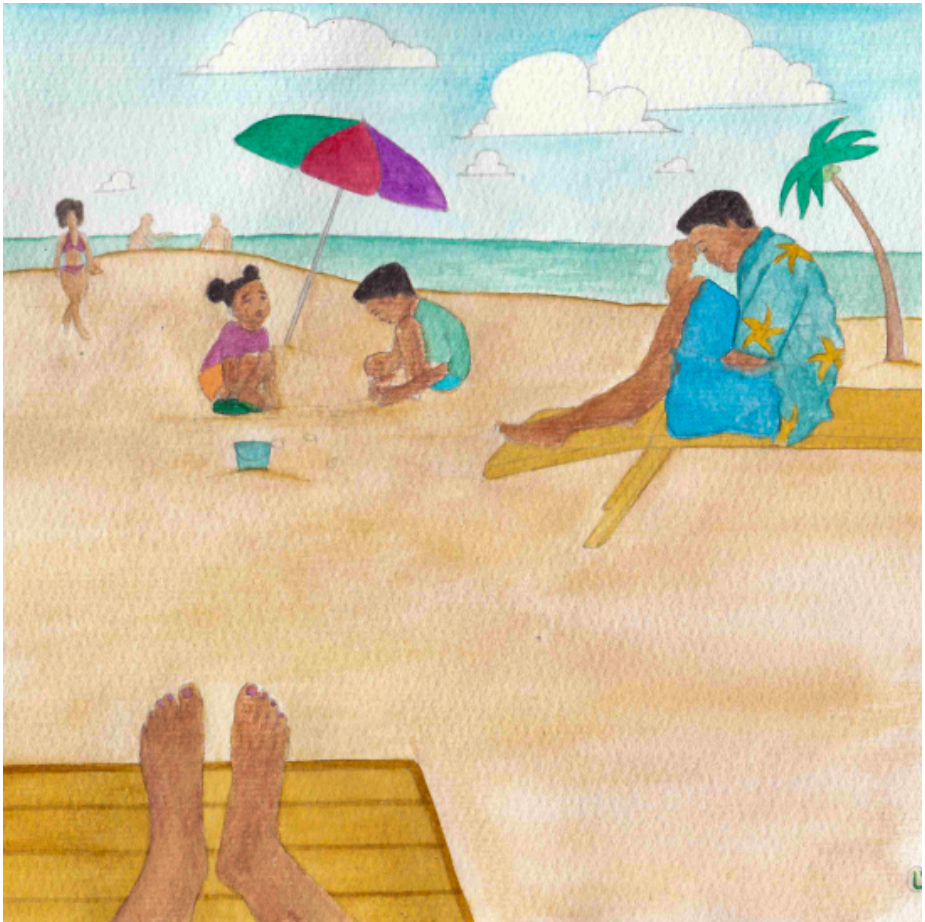




Alina o ile a beakanya go ya maikhutšong  
lebopong la lewatile le lebotse ka mo nageng.

O be a thabile kudu ge letšatši la go sepela le  
fihla.

O ile a phakiša a tsena hoteleng gore a ipshine  
ka leeto la gagwe lefelong leo le le botse.



Alina o be a patlame lebopong la lewatle a iketlile. A lebeletše batho ka tlhokomelo.

Ka bjako o ile a lemoga monna a na le bana ba babedi. Ba be ba bonala ba se na lethabo.

Ka moka ba be ba bonala ba nyamile. Bana ba be ba raloka ka setu.



Alina a nagana, “Ke ipotšiša gore gobaneng ba nyamile lefelong le lebotse bjale?”

Mathapa, ge a be a rutha letamong la hotele, bana ba monna yola ba tla go tlo rutha.

Alina a tlelwa ke kgahlego ya go bolela le bona.





Maina a bona e be e le Karemba le Kazungu.

Ba boditše Alina gore ke maikhutšo a bona a mathomo mola ba hloko falelwago ke mmagobona.

Alina o rile go kopana le tatagobona, a bona bohloko le tahlegelo sefahlegong sa gagwe.

Leina la gagwe e be e le Clemens.

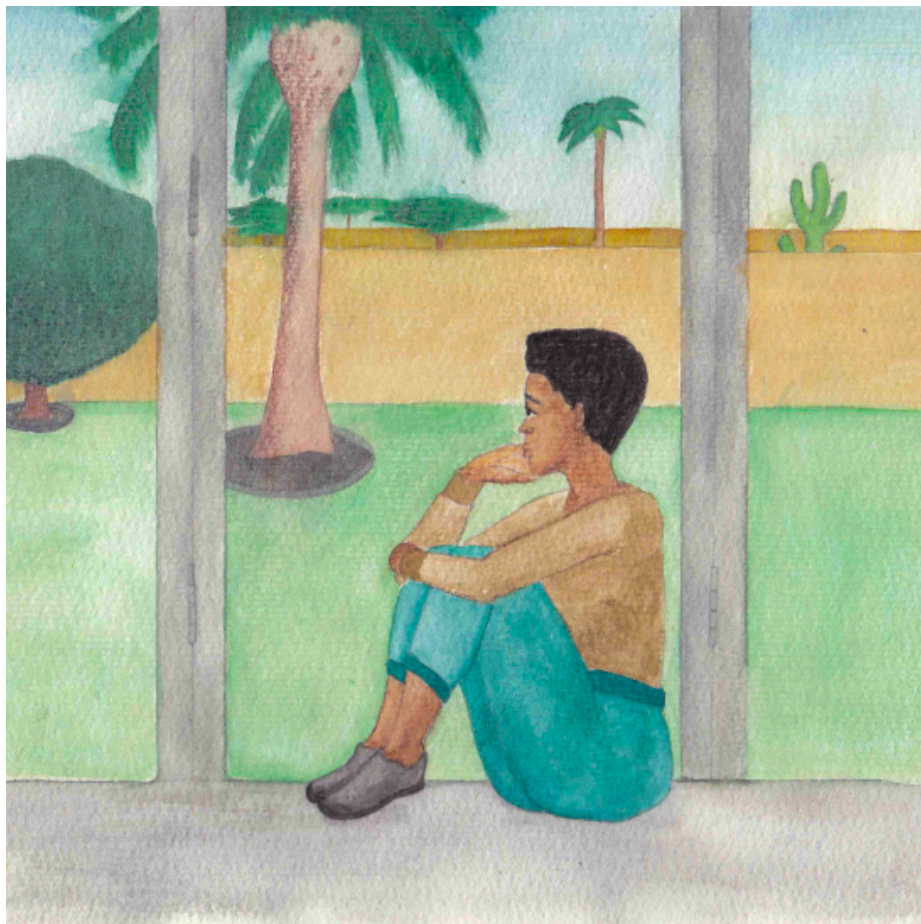


Go se go ye kae, ke ge Clemens, Alina le bana ba ehlwa mmogo.

Karemba le Kazungu ba be ba thabela go raloka le Alina lebopong la lewatle.

Alina a ba ruta go loga diroto ka matlakala a mopaleme, le go bopa dintlo ka mohlaba.





Matšatši a fetile, ba ipshina letšatšing.

Alina o be a sa nyake go boela motseng wa gagwe wa bodutu.

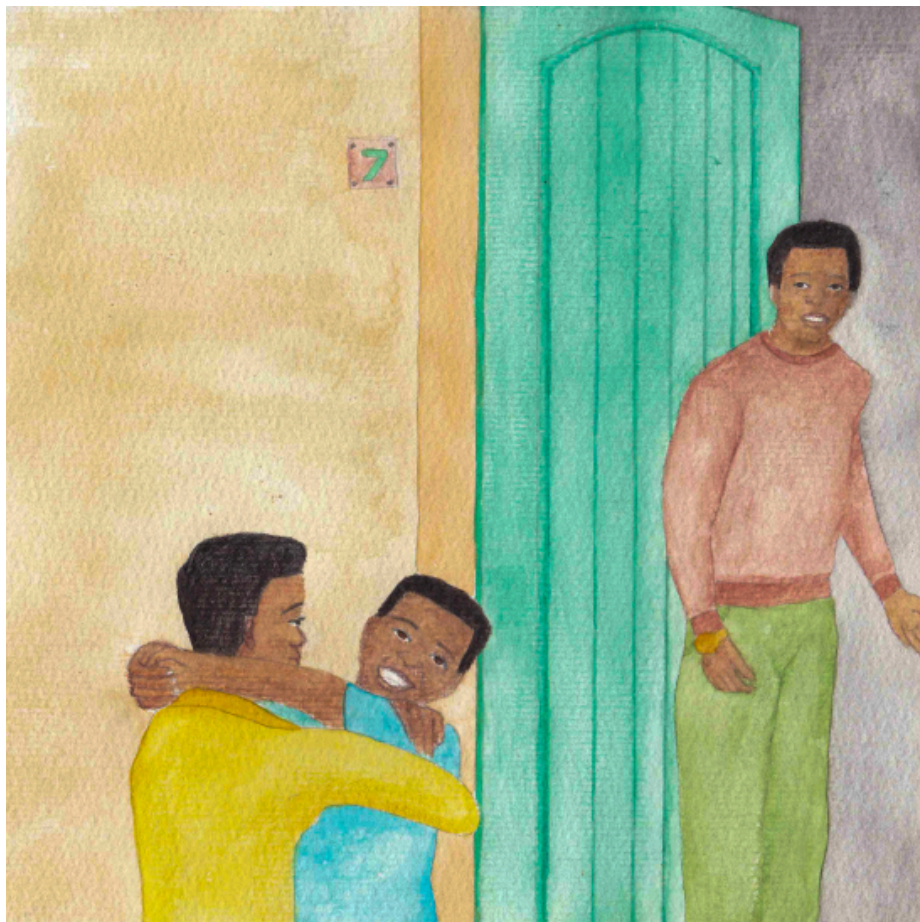
“Matšatši a ka a maikhutšo a a fela.  
Mohlomongwe go ka ba kaone ge nka a oketša,”  
a kamaka.



Mathapameng ao, Alina a kwa mokokoto lebating. Ge a bula, a hwetša Karemba le Kazungu ba eme mojako.

Ba bolela ka nako e tee ba re: “Re nyaka gore o be mma wa rena!”

Alina o be a sa tsebe gore a ba arabe bjang.



Morago ga go boledišana, Alina a ya le bona phapošing ya bona.

Clemens o be a myemyela ge a bona bana ba thabile, ba na le Alina. Alina o ile a gokara bana a re ba robale gabotse.

Alina a gopola a re, “Ke kopane le batho ba bararo ba ba kgethegilego.”

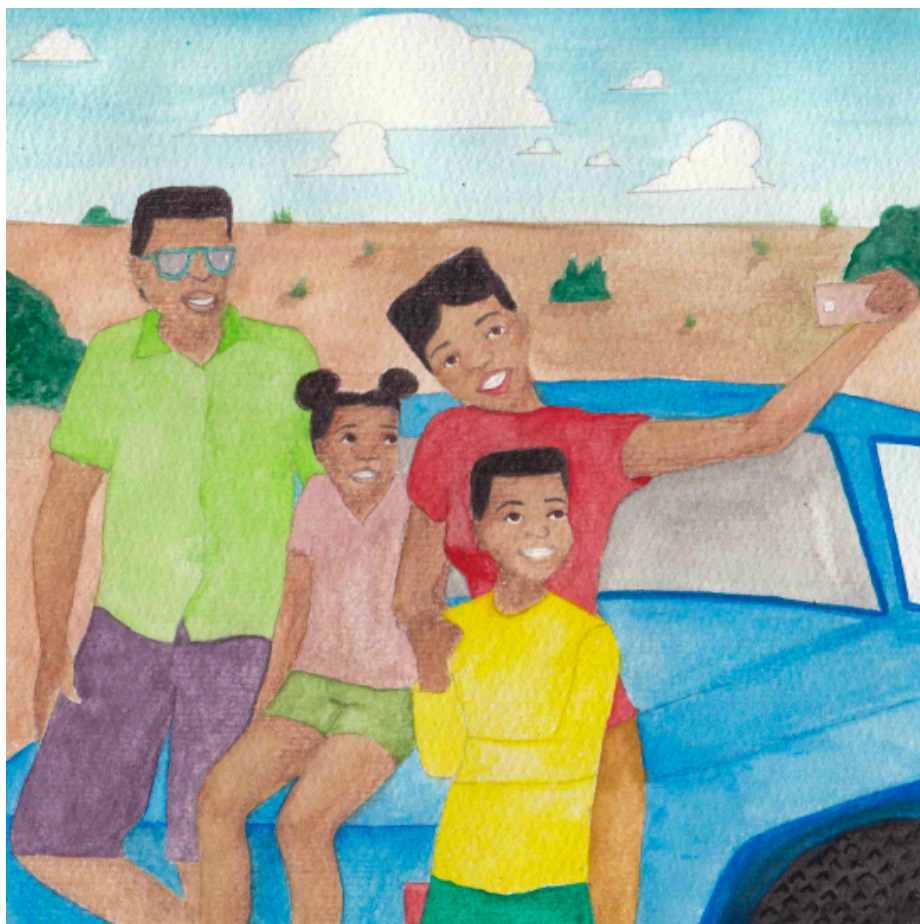




Mesong ye e latelago, Alina a yo dula le Clemens le bana ba gagwe ka nako ya difihlolo.

Karemba le Kazungu ba bonagala ba ena le tshupo go Alina ge a dula fase.

“Ekaba go na le se se diregago?” gwa botšiša Clemens, a myemyela a lebeletše difahlego tša bana.



Morago ga ngwaga, Alina le Clemens ba be ba nyalane!

Ngwaga ka ngwaga, ba be ba etela lebopo la lewatle go keteka kopano ya bona ya mathomo.

Ba raloka ka meetseng le go aga dintlo ka mohlaba go swana le mathomong ge ba kopana.



Ulwazi Lwethu is a Zenex Foundation funded and initiated project to develop a series of graded and leisure African language readers and teacher support materials. This project is targeted at teaching and supporting learners in the Foundation Phase to improve their home language reading and understanding. The readers have been originated in nine African languages in collaboration with Molteno Institute for Language and Literacies, Nelson Mandela Institute for Education and Rural Development, Room to Read South Africa, and Saide. All resources are developed as Open Education Resources (OER).



NELSON MANDELA  
INSTITUTE FOR  
EDUCATION AND  
RURAL DEVELOPMENT



Room to Read®  
World Change Starts with Educated Children®

Your attribution should include the following:

Title: Maikhutšo a Alina

Author/s: Sponono Mahlangu

Translator/s: Connie Makgabo


Illustrator/s: Khanyisa Masemola

Assurer/s: Dikeledi Queen Shai

Language: Sepedi

© Zenex Foundation - Saide 2023

CC BY includes the following elements:

BY  - Credit must be given to the creator

