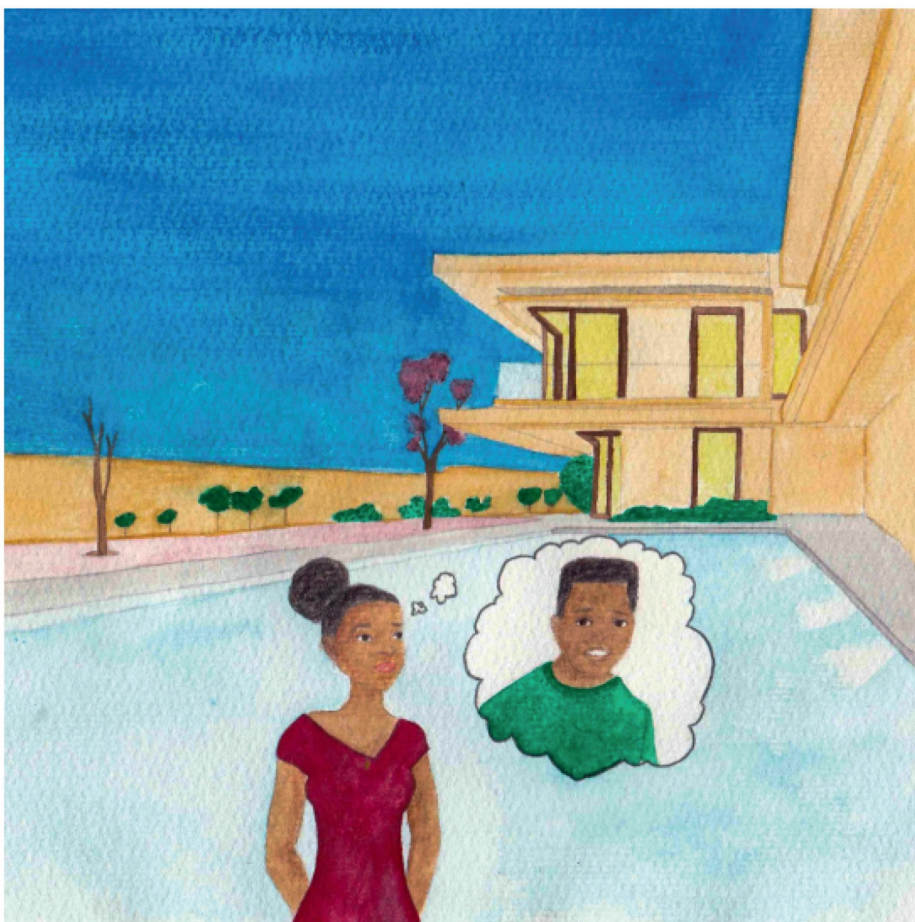




Mo toropong ya rona, go ne go le mosadi wa mohumi a
bidiwa Alina.

Alina o ne a nna mo ntlong e kgolo mo komponeng e ntle.

O ne a fitlhetse go le gontsi, fela a sa itumela.



Letsatsi lengwe, Alina o ne a tsamaya mo komponeng.

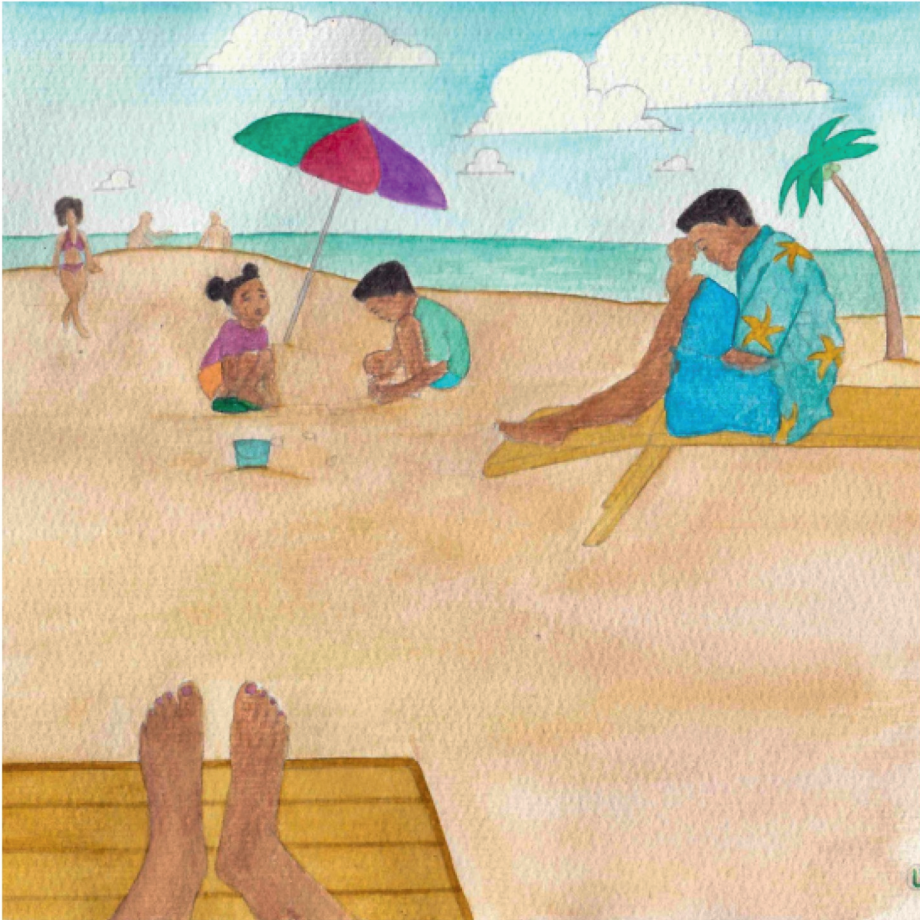
O ne a nyenya a ntse a nagana, "Nka rata go kopana le batho ba bantšhwa. Ka gongwe nka kopana le ditsala tse dintšhwa fa ke ya boikhutsong. Motlhomongwe nka kopana le mongwe yo o kgethegileng."



Alina o ne a rulaganya boikhutso kwa lebopong le lentle thata mo nageng.

O ne a itumetse thata fa letsatsi la go tsamaya le fitlha gore a tsamaye.

O ne a lokologa ka bonako kwa hoteleng ya gagwe le go itumelela leeto kwa lefelong le lentle le.



Alina a ikala mo lebopong a iketla. Ka iketlo a bogela batho gaufi le ene.

Ka bonako a bona monna le bana ba babedi. Balelapa ba ne ba bontsha ba sa natefelwe.

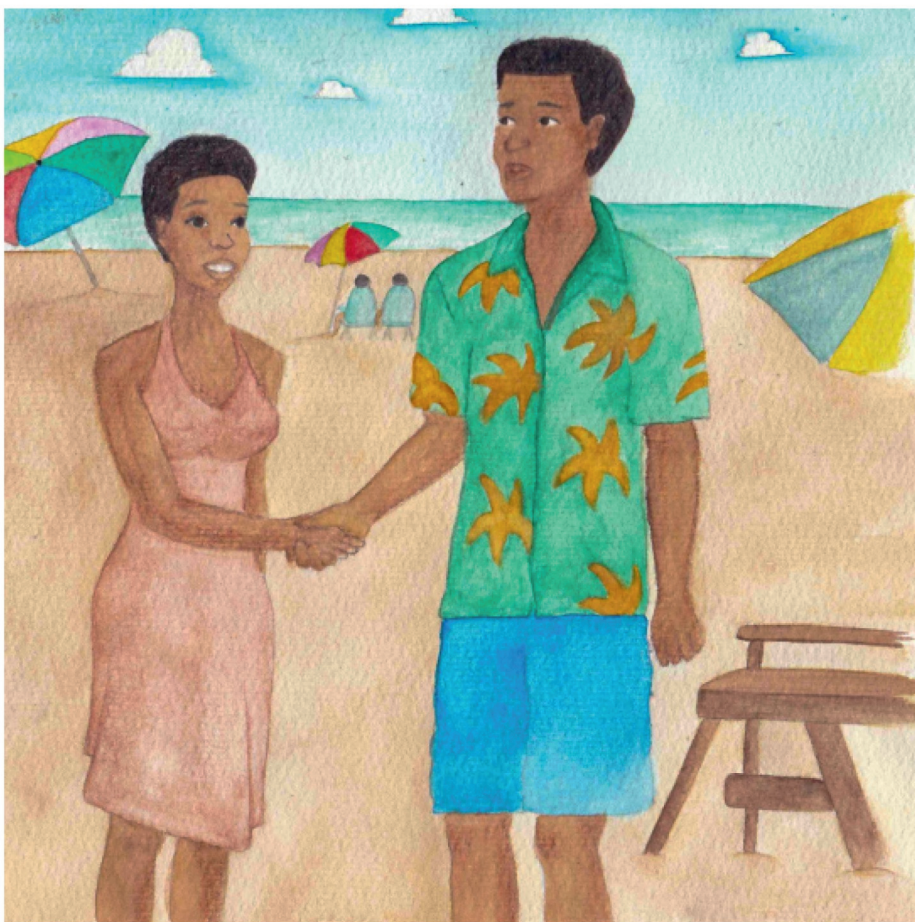
Botlhe ba ne ba bontsha ba sa itumela. Bana ba ne ba tshameka ka tidimalo.



Alina a nagana, “Ke a makala gore ke goreng ba hutsafetse mo lefelong le lentle jaana.”

Mo tsamaong ya letsatsi, o ne a thuma mo letamong la hotele fa bana ba monna ba tla go thuma.

Alina o ne a batla go ba itse mme a simolola go ba tlotlisa.



Bana e ne e le Karemba le Kazungu.

Ba ne ba bolelela Alina gore ke leeto la bona la ntlha fa e sale mmaabona a tlhokofala.

Fa Alina a kopana le rraabona, o ne a bona kutlobotlhoko le tathegelo mo mathong a gagwe.

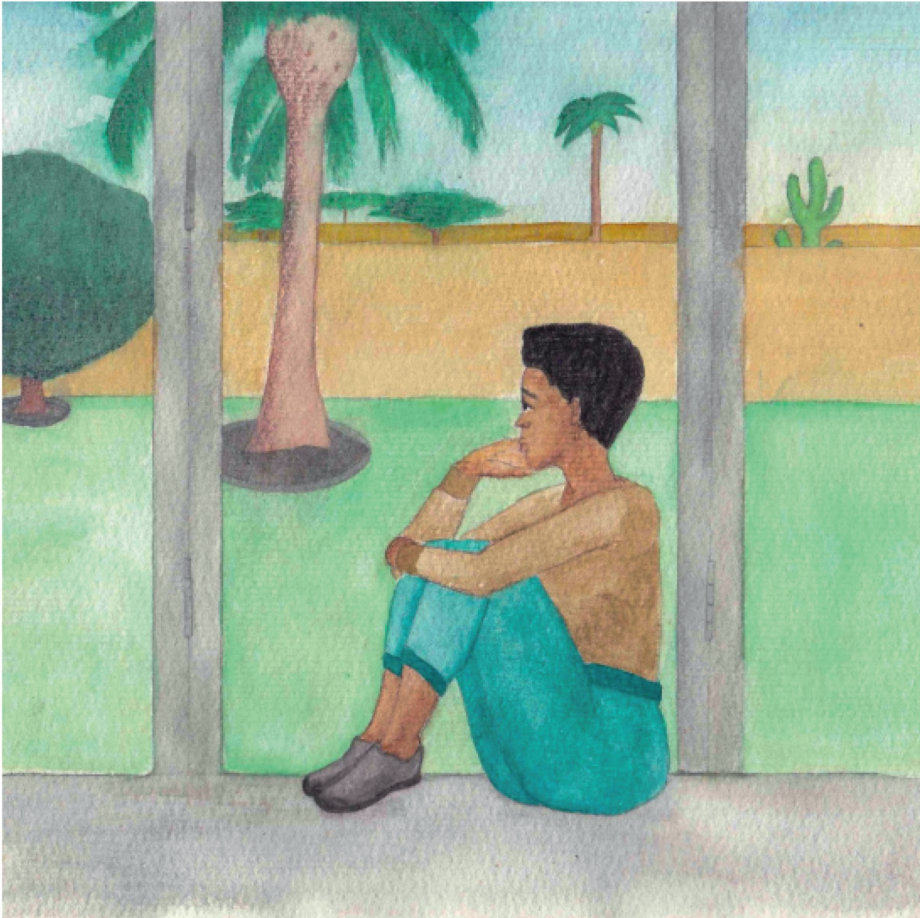
Leina la gagwe e ne e le Clemens.



Clemens, Alina le bana ba simolola go nna mmogo.

Karemba le Kazungu ba ne ba rata go tshameka le Alina mo lebopong.

Alina o ne a ba ruta go loga ditlatlana ka matlhare a dipalema le go aga dintlo tsa motlhaba.



Nako e ne e tsamaya ka bonako mo letsatsing.

Alina o ne a sa batle go boela morago kwa komponeng ya gagwe e e bodutu.

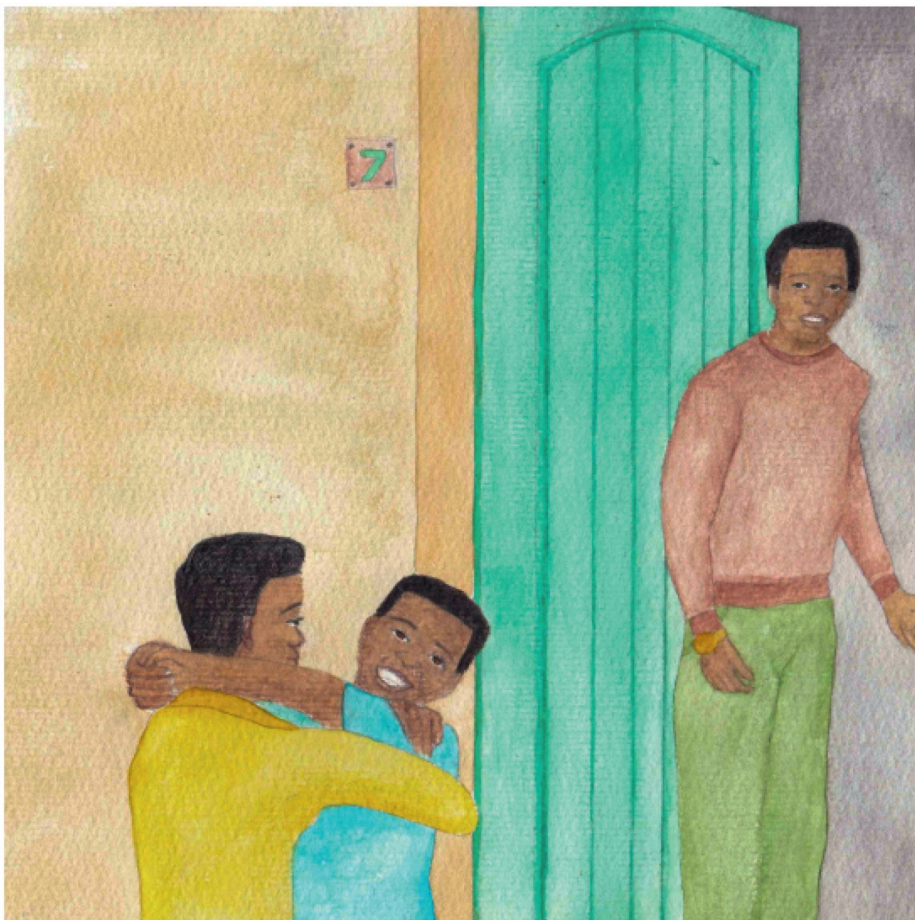
“Boikhutso jwa me bo tla bokhutlong. Gongwe fa nka atolosa malatsi a me fa, nka se ikutlwe ke hutsafetse, “a nagana.



Maitseboeng ao, Alina a utlwa go kokotiwa mo mojakong wa gagwe. Fa a bula mojako, Karemba le Kazungu ba ne ba eme fao.

Ba ne ba buela gongwe, "Re batla gore o nne mmaarona!"

Alina o ne a sa itse gore a ba arabe jang.



Morago ga go bua, Alina, Karemba le Kazungu ba tsamaya mmogo go ya kwa diphaposing tsa bona.

Clemens e rile go bona bana ba gagwe ba itumeletse Alina, a nyenya. A tlamparela bana, a ba laela.

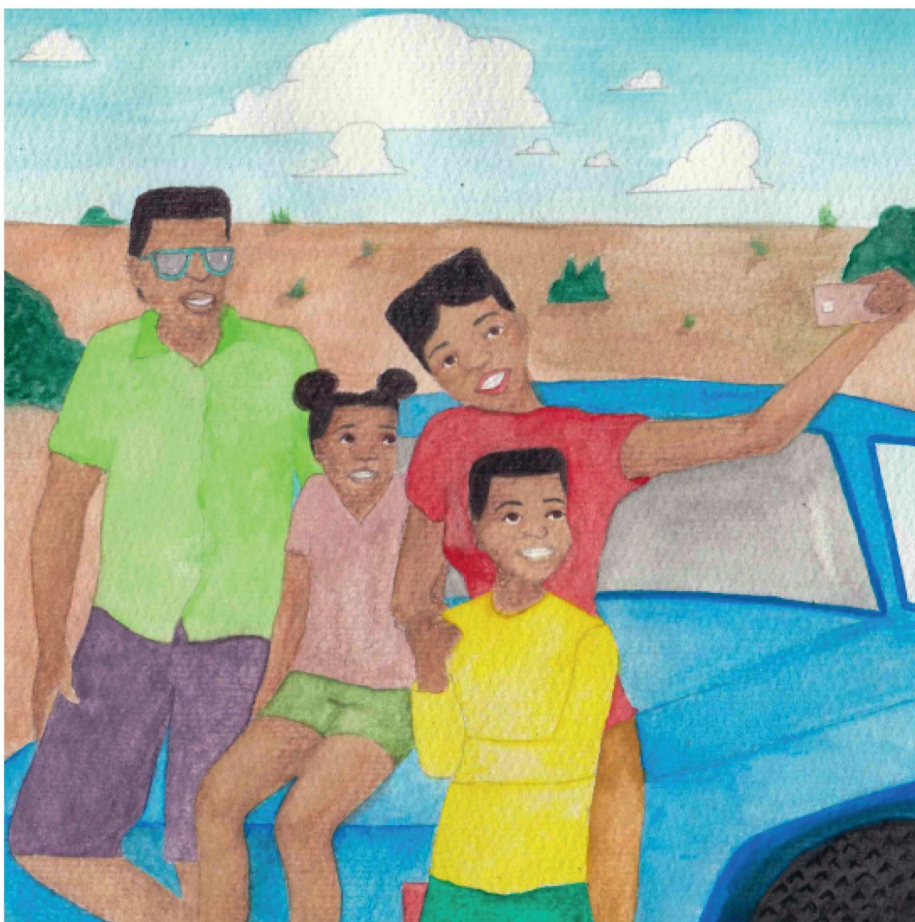
Alina a inagana, "Ke kopane le batho ba bararo ba ba kgethegileng."



Mo mosong, Alina a kopana le Clemens le bana ba gagwe kwa difitlholong.

Karemba le Kazungu ba lebelela Alina ka tsholofelo fa ba nna fa fatshe.

“A go na le se se diragalang?” Clemens a botsa, a nyenyanyenya a lebeletse maitlhagiso a bana ba gagwe.



Morago ga ngwaga, Alina le Clemens ba ne ba nyalana!

Ngwaga le ngwaga, balelapa ba ne ba etela lebopo le lentle go keteka kopano ya bona ya ntlha.

Ba tshameka mo metsing le go aga dintlo tsa motlhaba, fela jaaka ba ne ba dira fa ba kopana la ntlha.