

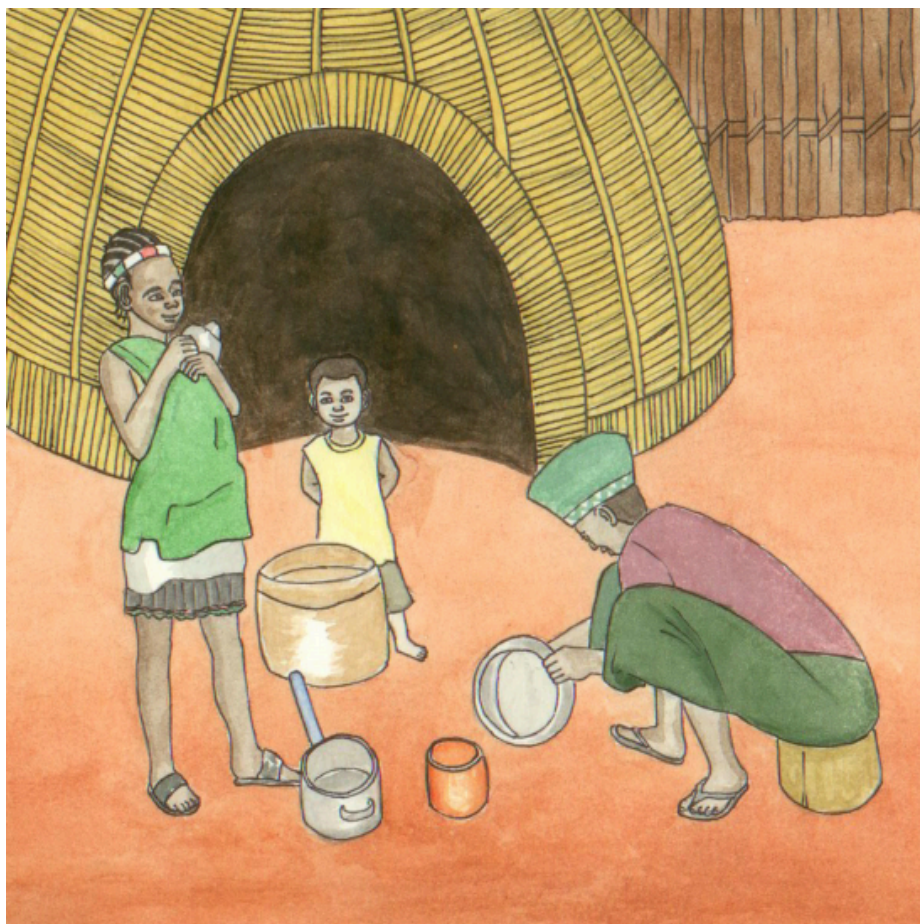


# Phumelele a re na Tshivhindi

Zandile Malaza

Simon Mokoena





Phumelele o vha e musidzana a bvaho muṅani wa vhashai.

O vha a tshi dzula na muṅa wahawe muṅanani u vhidzwaho Celani.

Ho vha hu na bada nthihi fhedzi ya u dzhena na u bva Celani.



Tsini na bada ya muḁana ho vha hu na muri.

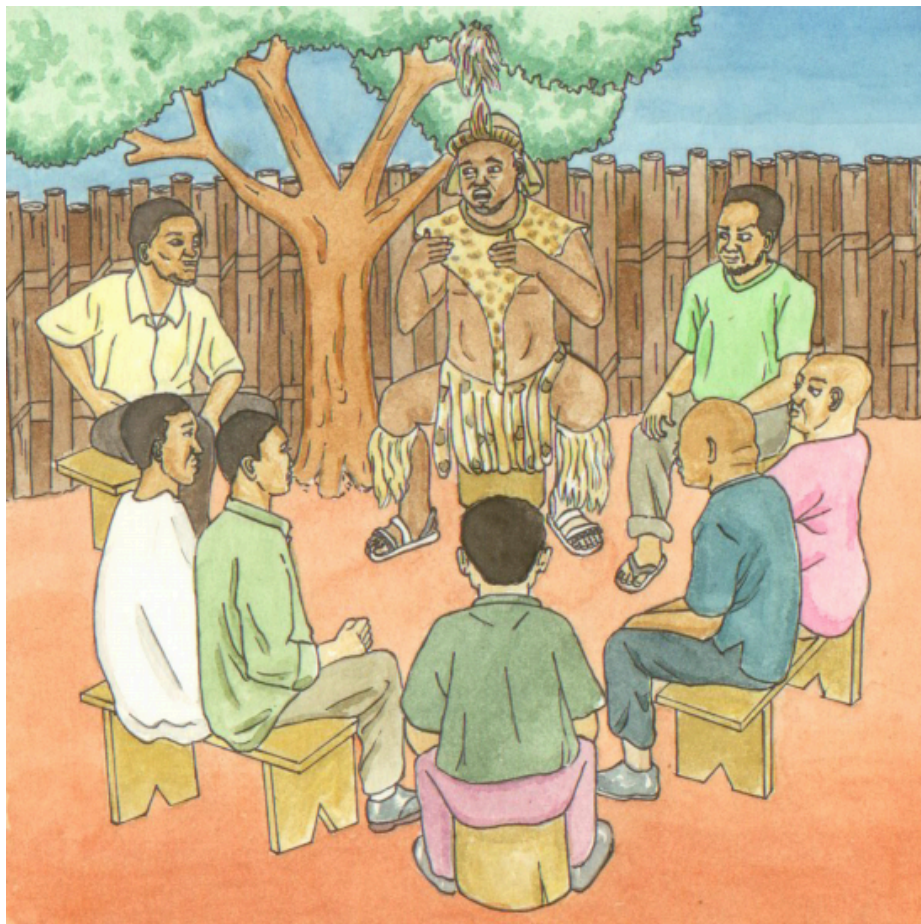
ḽiḽowa ḽihulwane ḽo vha ḽi tshi dzula kha wonoyo muri.

Vhathu vho vha vha tshi fhira wonoyo muri musi vha tshi ya kilḽiniki, mavhengeleni kana tshikoloni.



Musi ǀi tshi pfa mitsindo, ǀinowa ǀo vha ǀi tshi ǀiwisela fhasi badani.

ǀinowa ǀo vha ǀi tshi kondisela vhathu vha ǀodaho u pfuka. Vhadzulapo vho lingedza u fara ǀinowa fhedzi vha kundelwa.



A huna we a kona u fara ɿɿowa.

Khosi ya amba uri ane a ɿo fara ɿɿowa u ɿo lambedzwa. Vhanna ndi vhone fhedzi vhe vha tendelwa u shela mulenzhe kha ɿeneɿo fulo.

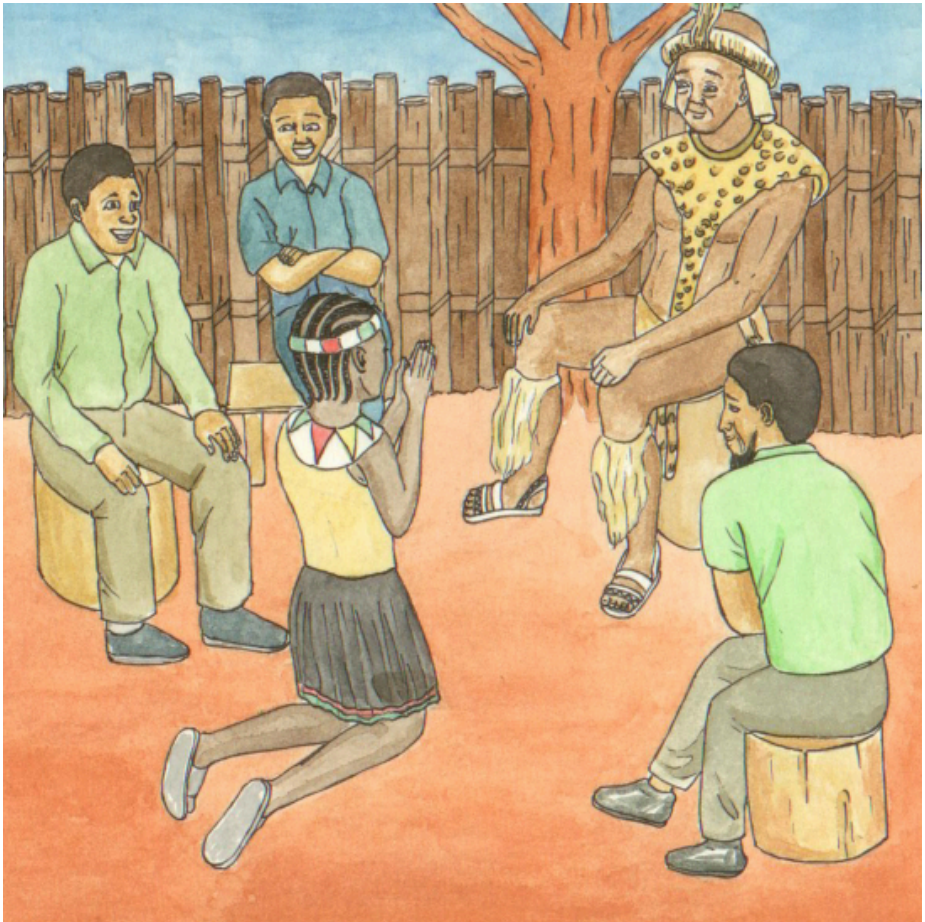


Vhanna vha mirole yothe vho lingedza u fara  
liṅowa fhedzi vha balelwa.

Vho lingedza u shuma sa zwigwada.

Naho zwo ralo, vho kundelwa u fara liṅowa.

U dzhena na u bva muḁanani zwo vha zwi  
khombo.



Phumelele a ya ha khosi a ri, “Kha vha ntendele ndi shele mulenzhe kha heji fulo.”

Vhathu vha mu sea ngauri o vha e mufumakadzi. Vha ri, “U khou swaswa.”

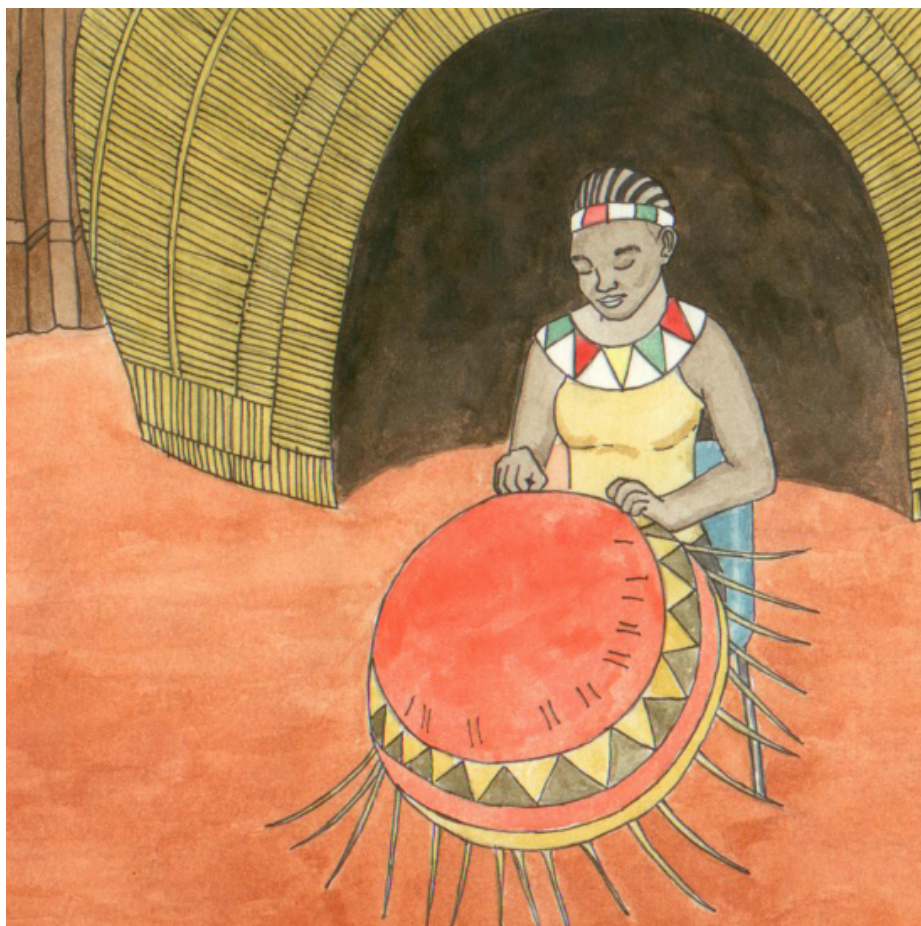
Khosi ya humbula nga zwe Phumelele a zwi humbela.



Mafheleloni, khosi ya ri, “Vhanna vha muvhunduni vho kundelwa u fara linowa. A thi nga xeelwi nga tshithu.”

Khosi ya fha Phumelele tshikhala. Fhedzi yo vha i sa fulufheli uri a nga bvelela he vhanna vha kundelwa hone.





Phumelele o vha e na maano a vhuṭali.

A luka manngi muhulwane vhukuma. A u lukela na thambo dzine manngi wa nga vhoḥiwa ngadzo uri u vatee.

A halwa manngi nṭha ha ṭhoho a livha murini.



Sa nga misi, liṅowa la pfa mitsindo. La  
ḡlugiselela u ḡwisela fhasi u ri li thivhe ndila.

Phumelele o vha o ḡlugisela musi li tshi ita  
ngauralo!

“Namusi ndi ḡo li sumbedza,” u ralo a tshi  
sendela murini.



Musi liṅowa li tshi diwisa murini, la mbo di wela ngomu ha manngi wo lukiwaho.

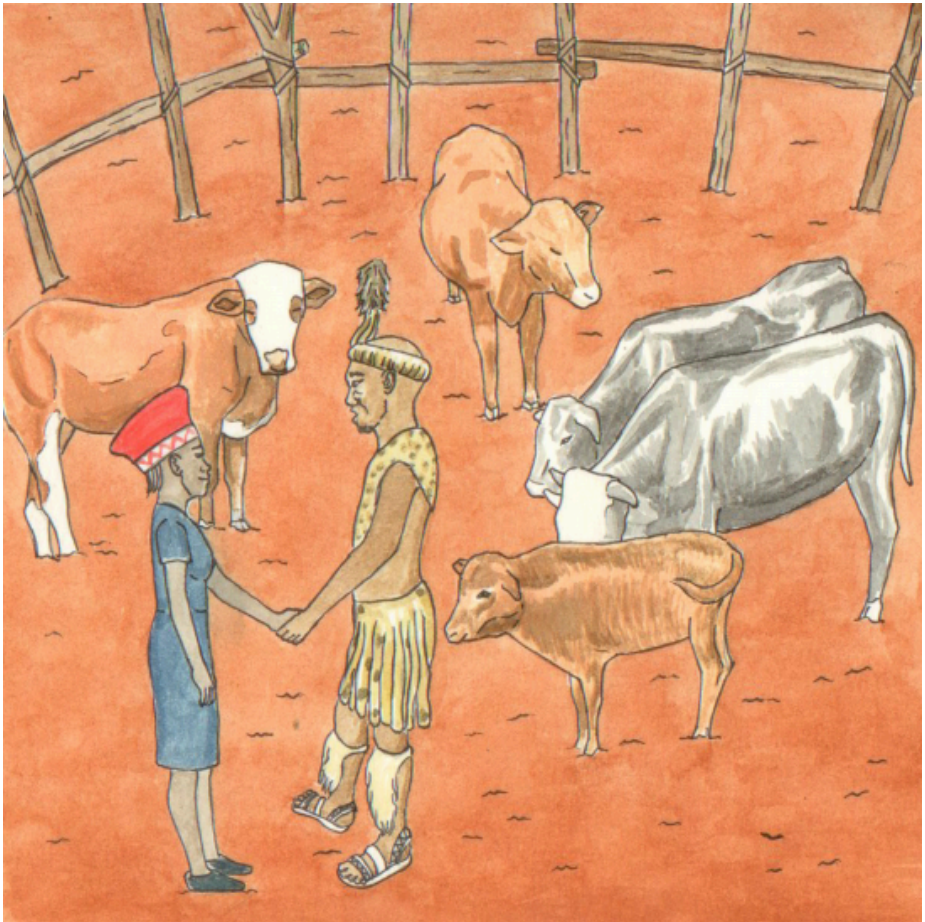
Nga u t̄avhanya Phumelele a vhofha thambo dza manngi a u vala. Liṅowa la valelwa nga ngomu.



Phumelele a hwala manngi u re na liḵowa a ya muḵanani.

Vhathu vhoṱhe muḵanani vha mu renda musi a tshi dzhena khroni dza pfamo ya khosi.

Vhathu vha ri, “Phumelele o ṱalifha nahone u na tshivhindi. Khosi i fanela u ita zwe ya fulufhedzisa.”



Khosi ya nea Phumelele tshipiḁa tshihulwane tsha shango na danga lo ḁalaho kholomo.

A vha murangaphanḁa wa tshenetsho tshipiḁa tsha shango. Vhathu vha ya khae u wana nyeletshedzo.

Liḁowa la dzhiiwa la iswa hune ha fuiwa dziḁowa, vhathu vha kona u tshimbila vho vhofoholowa.



Ulwazi Lwethu is a Zenex Foundation funded and initiated project to develop a series of graded and leisure African language readers and teacher support materials. This project is targeted at teaching and supporting learners in the Foundation Phase to improve their home language reading and understanding. The readers have been originated in nine African languages in collaboration with Molteno Institute for Language and Literacies, Nelson Mandela Institute for Education and Rural Development, Room to Read South Africa, and Saide. All resources are developed as Open Education Resources (OER).



Your attribution should include the following:

Title: Phumelele a re na Tshivhindi

Author/s: Zandile Malaza

Translator/s: Doris Manyamalala

Illustrator/s: Simon Mokoena


Assurer/s: Tshedza Tlhako

Language: Tshivenda



© Zenex Foundation - Saide 2023

CC BY includes the following elements:

BY  - Credit must be given to the creator

