

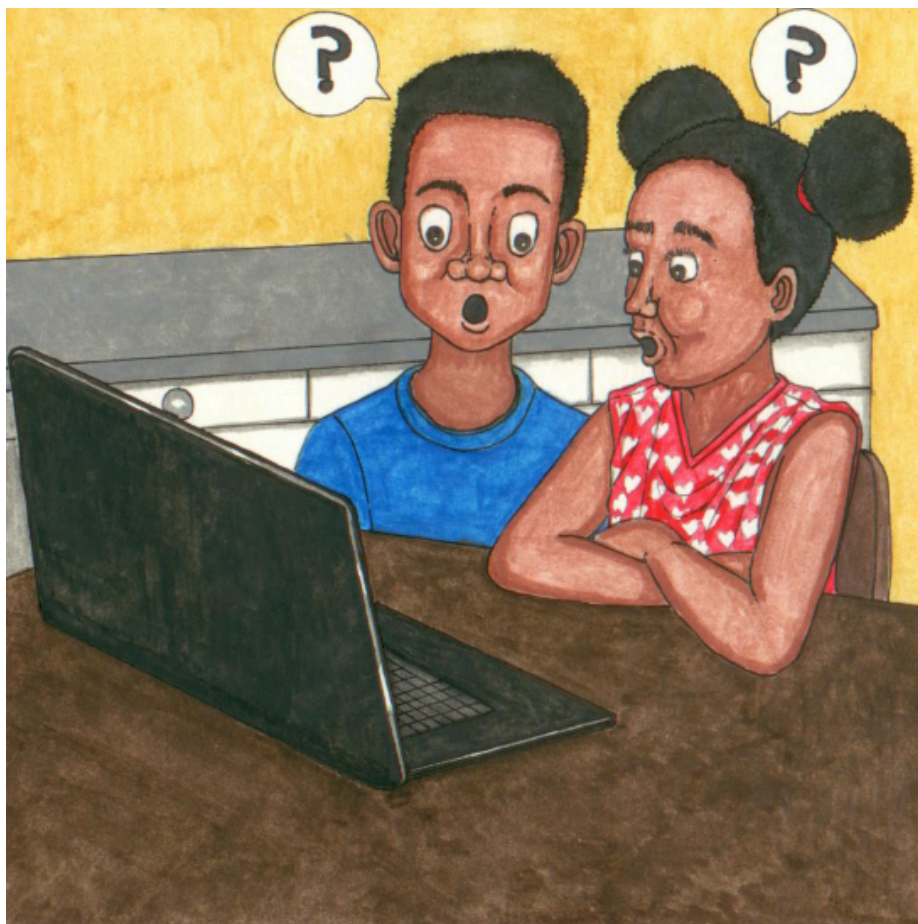


Kuphepha ku-inthanethi

Patricia Ndlovu

Sibusiso Khumalo

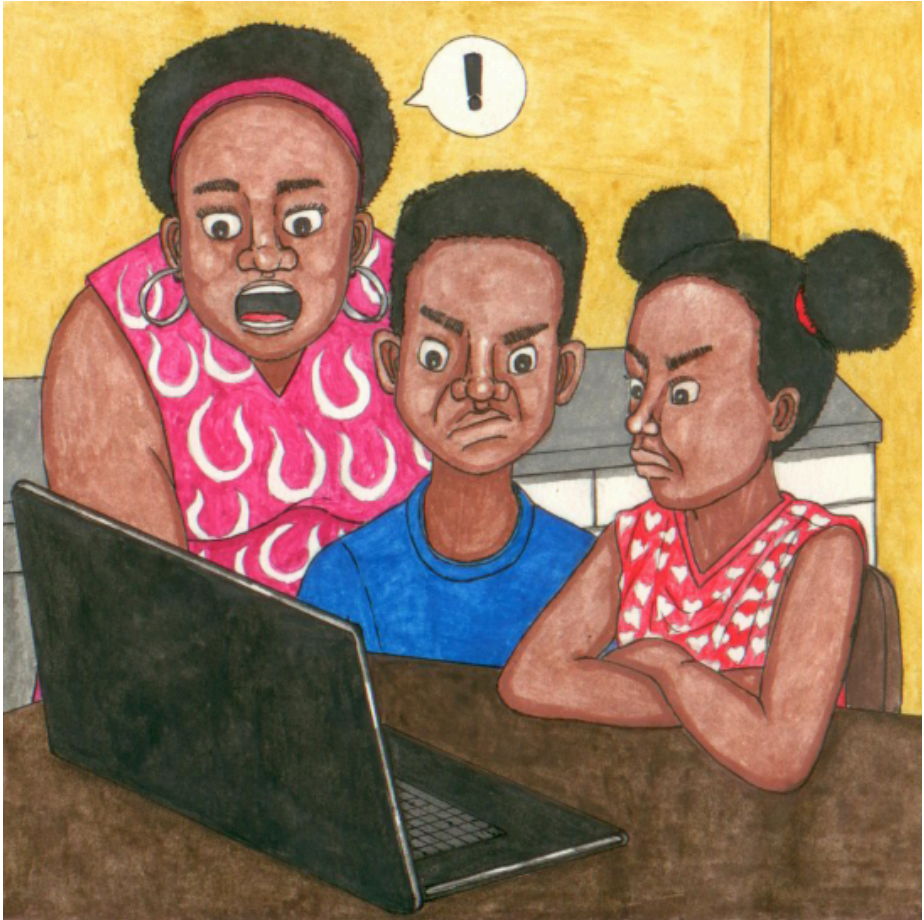




I-inthanethi ikunika litfuba lekutsi ufundze, udlale imidlalo, utsenge, kanye nekutsi ukhulume nebangani bakho njengoba ukwenta malanga onkhe ekuphila kwakho.

Ingaphindze futsi ibe yinzawo leyingoti kubantwana.

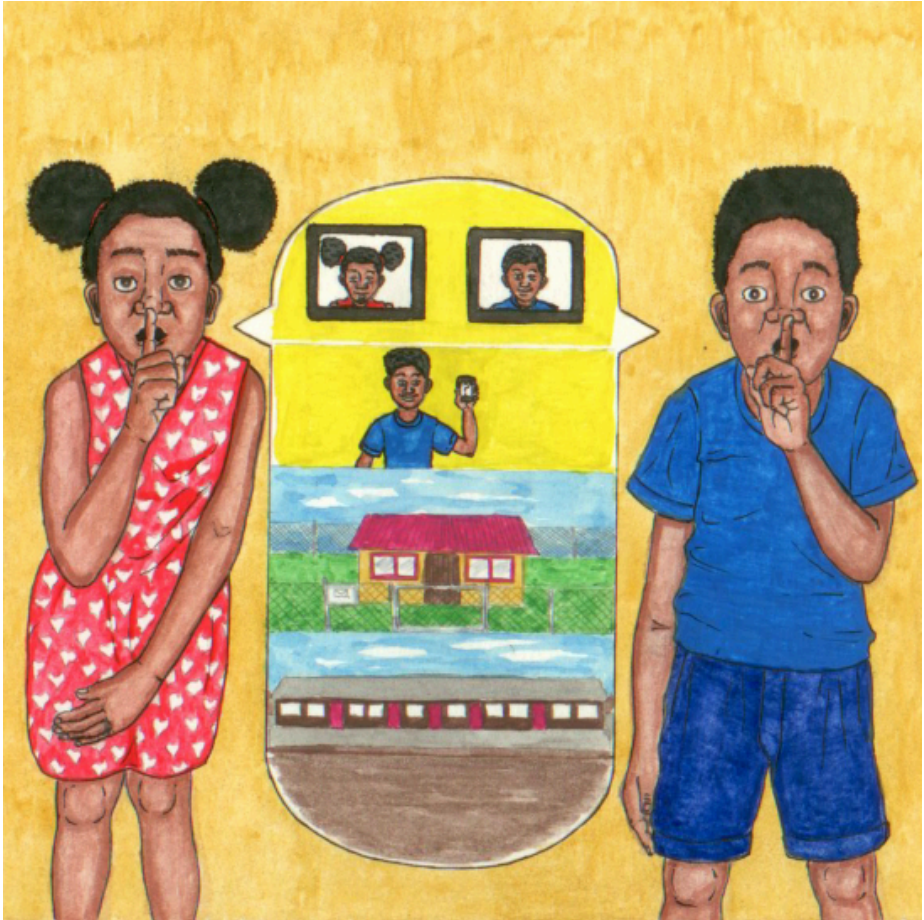
Loku kungenca yekutsi kunebantfu lasebentisa i-inthanethi ngetizatfu letimbi.



Naba labanye bebantfu lababi labasebentisa i-inthanethi:

- Tigebengu leteba imininingwane letiye tintjontje imininingwane yakho sicu.
- Basusi beluchuku labaye bakuhluphe, bakuhlazise, nobe bakuphoce.
- Bantfu labakhohlakele labakha bungani nawe ku-inthanethi, ngenhloso yokukuhlukubeta.

Utawufundza kabanti ngaloku emakhasini lambalwa lalandzelako.



Kute uphephe kumasela lantjontja imininingwane, akukafanele wabelane ngalemininingwane yakho sicu nalabanye ku-inthanethi:

- Libito lakho mbamba.
- Tinombolo telucingo.
- Likheli lasekhaya.
- Imininingwane lemayelana nemndeneni wakho.
- Kutsi ufundza kusiphi sikolwa.

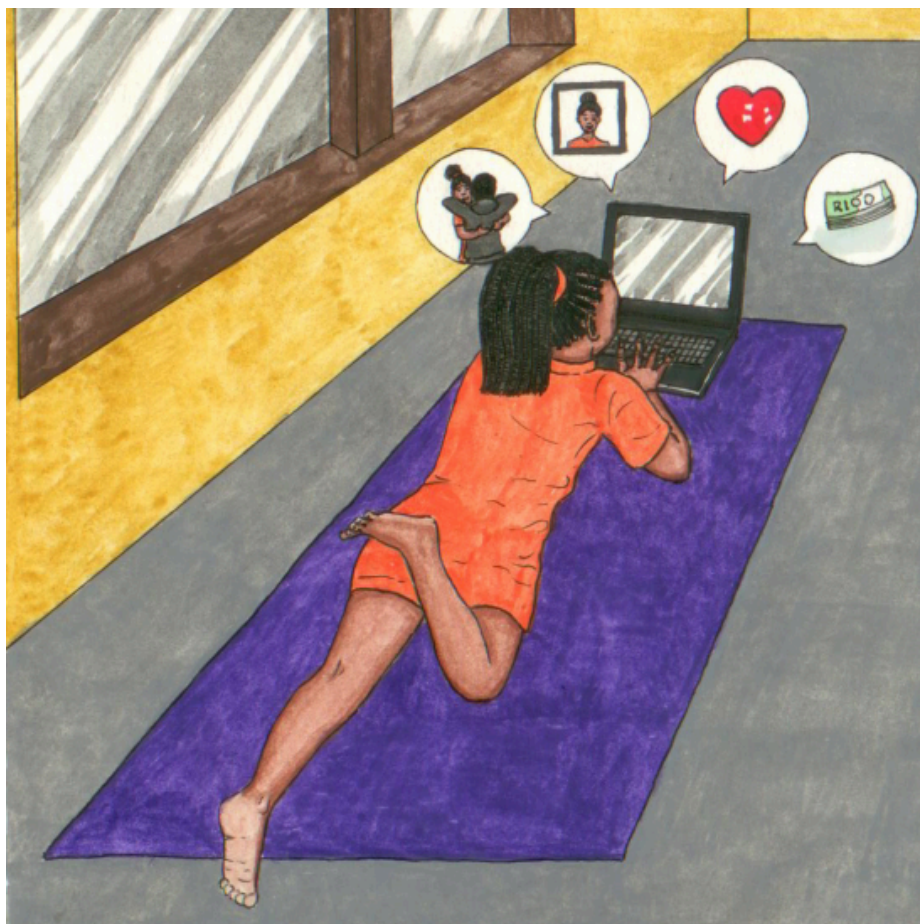
Lemininingwane yenta kube lula ngemasela lantjontja imininingwane kutsi angatenta wena ku-inthanethi.



Umsusi weluchuku ku-inthanethi ngumntfu lowenta loku:

- Wabelana futsi aphoste tintfo letimbi ngawe.
- Ngulokuphatsa kabi.
- Nguloksetinkhundleni tekuchumana, etingosini tekuceketsa kanye nakuma-imeyili.

Tjela umntfu lometsembako nangabe ukhatsatekile ngekuchukulutwa ekuphileni kwangempela noma ku-inthanethi.



Bantfu labakhohlakele ku-inthanethi kuvame kutsi kube bantfu baladzala. Kungenteka betame:

- Kutfola yonkhe intfo ngawe.
- Bakhe buhlobo nawe kute utobetsembe.
- Babonakale babahle, banemusa, futsi banakekelana.
- Bacele sitfombe sakho.
- Bakuncenge kutsi wente tintfo letinebungoti.

Caphela kutsi uhlangana nabobani ku-inthanethi.



Ku-inthanethi asitfoli bantfu lababi kuphela. Kukhona futsi nelwati lolungemanga naloluyingoti.

Ungaboyikholelwa yonkhe intfo loyifundza ku-inthanethi kutsi iliciniso.

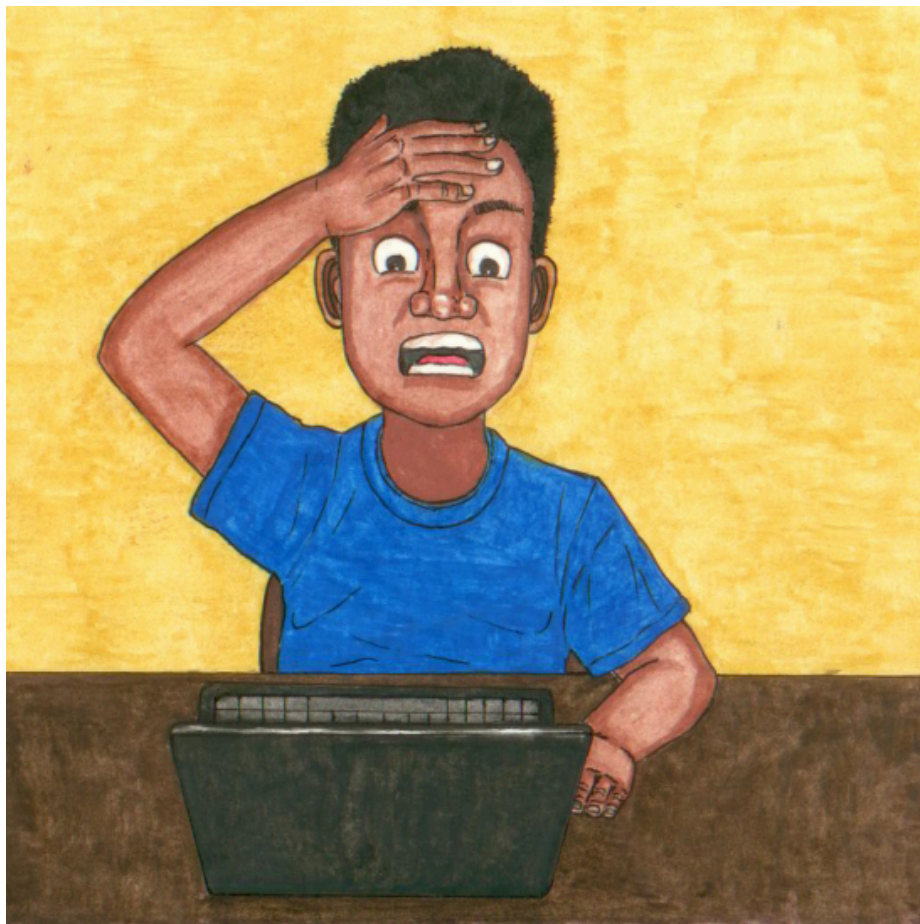
Cela umtali nobe thishela kutsi akusite uhlole kutsi lwati loluku-inthanethi luliciniso yini nobe ngemanga.



Ngesikhatsi usebenta ku-inthanethi:

- Bani nesibopho.
- Bani nenhlonipho.
- Caphela.

Nangabe wenta konkhe loku, utophepha ku-inthanethi.



Nangabe ufaka lwati kanye netifombe ku-inthanethi unesibopho lesiphelele saloko lokufakile.

Cabangisisa kahle ngaphambi kwekufaka nobe yini.

Lwati nobe titfombe lotifakako tingasetjentiselwa kumelana nawe nobe nemndeni wakho.

I-inthanethi akwenteki ikukhohlwe loke wakufaka kuyo, ngisho noma sewukususile.



Tihloniphe wena kanye nalabanye basebentisi be-inthanethi:
ngaloko lokushoko, ngaloko lokufakako, kanye nangaloko
lokwentako.

Ungabi nemahloni ekutjela batali bakho ngayo yonkhe intfo
leyentekako ku-inthanethi, nobe ngebantfu lohlangana nabo ku-
inthanethi.



Caphela ngaso sonkhe sikhathi nangabe uku-inthanethi. Akusiye wonkhe umuntfu lobonakala angumngani wakho, longumngani wakho sibili.

Sebentisa lwati lolukulencwadzi kute lukuvikele uhlale uphephile ku-inthanethi.

—Imibuto

1. Shano tintfo letimbili longatenta ku-inthanethi.
2. Shano tinhlobo letintsatfu tebantfu labenta tintfo letimbi ku-inthanethi.
3. Kungani kubalulekile kutsi ucele umuntfu lomdzala akusite nangabe usebentisa i-inthanethi?
4. Bhala phansi tintfo letimbili lokungakafanele wabelane ngato ku-inthanethi.
5. Yini lokufanele uyente nangabe utiva ungakaphephi ku-inthanethi?

Lencwadzi ingulenywe yeluchungechunge lwetincwadzi
letine letetfula tihloko tebuchwepheshe
bangcondvomshini.

Lencwadzindzaba icanjelwe tintfo tekufundza tephrojekthi
yeZenex Ulwazi Lwethu nga-2021.



Ulwazi Lwethu is a Zenex Foundation funded and initiated project to develop a series of graded and leisure African language readers and teacher support materials. This project is targeted at teaching and supporting learners in the Foundation Phase to improve their home language reading and understanding. The readers have been originated in nine African languages in collaboration with Molteno Institute for Language and Literacies, Nelson Mandela Institute for Education and Rural Development, Room to Read South Africa, and Saide. All resources are developed as Open Education Resources (OER).



NELSON MANDELA
INSTITUTE FOR
EDUCATION AND
RURAL DEVELOPMENT



Room to Read®
World Change Starts with Educated Children®

Your attribution should include the following:

Title: Kuphepha ku-inthanethi

Author/s: Patricia Ndlovu

Translator/s: Mduduzi Benjie Shongwe

Illustrator/s: Sibusiso Khumalo


Assurer/s: Simangele Khoza

Language: Siswati



© Zenex Foundation - Saide 2023

CC BY includes the following elements:

BY  - Credit must be given to the creator

