



Letsatsi la Ditshwanelo tsa Botho le ketekiwa mo Aforika Borwa ka 21 Mopitlwe ngwaga le ngwaga.

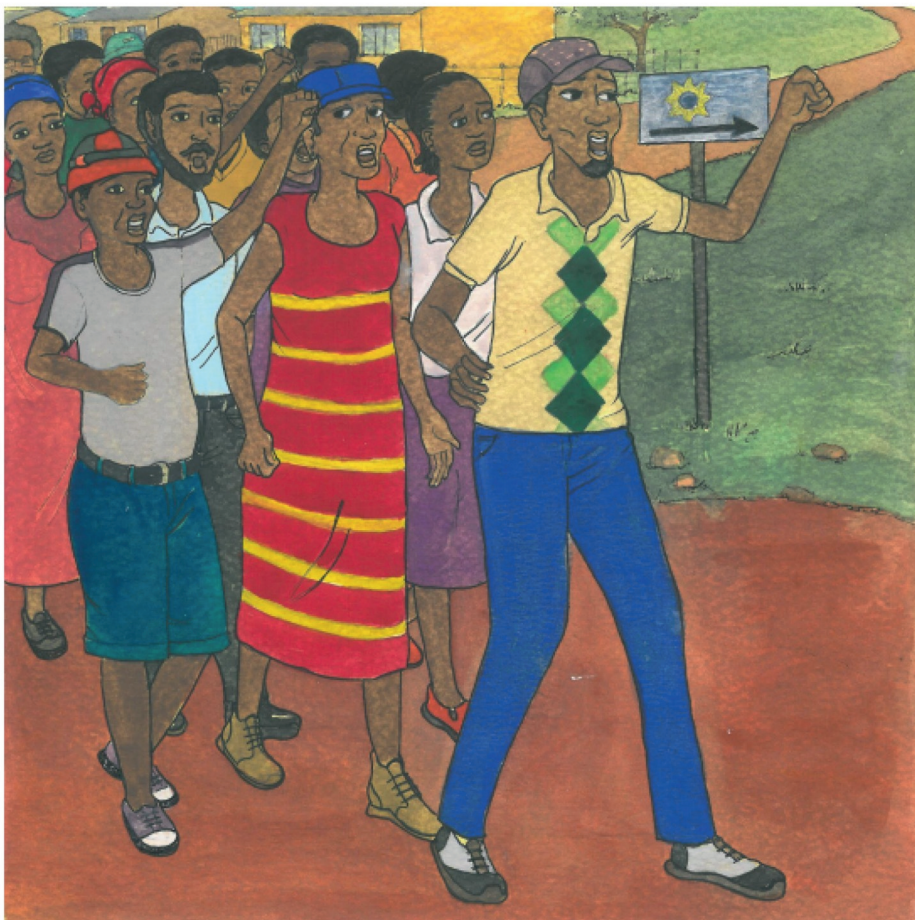
Bukakanelo e, e ka ga hisitori ya bothokwa jwa letsatsi le.



Ka nako ya puso ya tihaoele, bantsho ba Aforika Borwa ba ne ba gateletswe.

Batho ba ne ba lwa kgatlanong le tihaoele le melao ya teng ya kgatelelo. Ba ne ba lwela kgololesego le ditshwanelo tsa tekatekano.

Ka la 21 Mopitlwe ngwaga le ngwaga, naga e gopola balwelakgololesego.



Ka 21 Mopitlwe ka 1960 baagi ba Sharpeville le Langa ba ne ba tseba megwantong.

Ba ne ba lwantsha melao ya kgatelelo ya puso ya tIhaolele. Ba ne ba gwanta kgatIhanong le 'molao wa dipasa'.

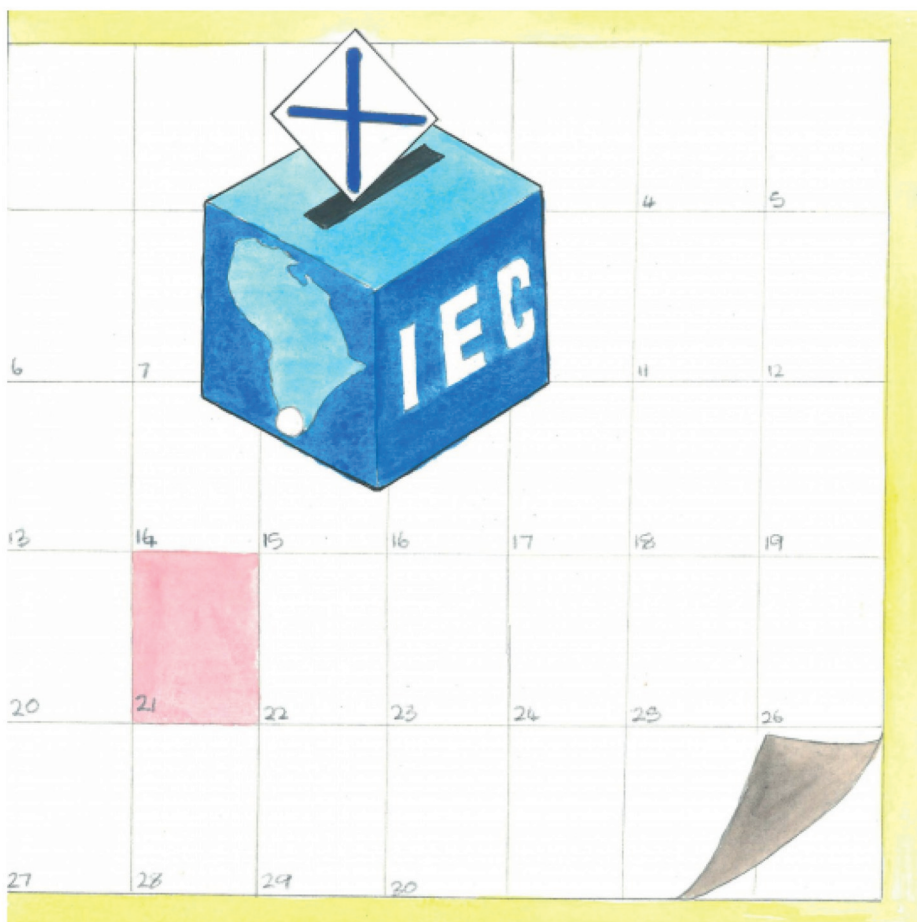
"Maatla! A rona! Maatla go batho!" bagwanti ba goa.



Kwa Sharpeville, ba ne ba opela mme ba gwanta ka kagiso go ya kwa seteišeneng sa mapodisa.

Fa mapodisa a bona setlhopha sa batho, ba ne ba tllhasela bagwanti.

Batho ba tshaba, bangwe ba ne ba gobala. Bangwe ba ne ba latlhegelwa ke matshelo.



21 Mopitlwe kwa tshimologong e ne e itsege jaaka Letsatsi la Sharpeville.

Letsatsi la dirwa la boikhutso morago ga ditlhopho tsa 1994 tsa temokerasi.

Naga e gopola balwelakgololesego. Ke tsela ya go ba leboga.



Aforika Borwa e na le molaotheo wa temokerasi. Bakwadi ba molaotheo ba ne ba batla gore batho botlhe ba tlotle ditshwanelo tsa botho.

Molaotheo wa Aforika Borwa o ala ditshwanelo le melao ya baagi botlhe. Batho botlhe ba na le ditshwanelo tse di tshwanang.



Ngwaga le ngwaga ka 21 Mopitlwe, dikolo le diofisi di a tswalwa.

Ke letsatsi la go keteka ditshwanelo tsa botho. Ke letsatsi la go keteka tekatekano.

Batho ba keteka le go tlotla letsatsi le ka ditsela tse di farologaneng.



Bana ba ka keteka letsatsi le ka go bua ka ditshwanelo tsa bona.

Ee, bana le bona ba na le ditshwanelo!

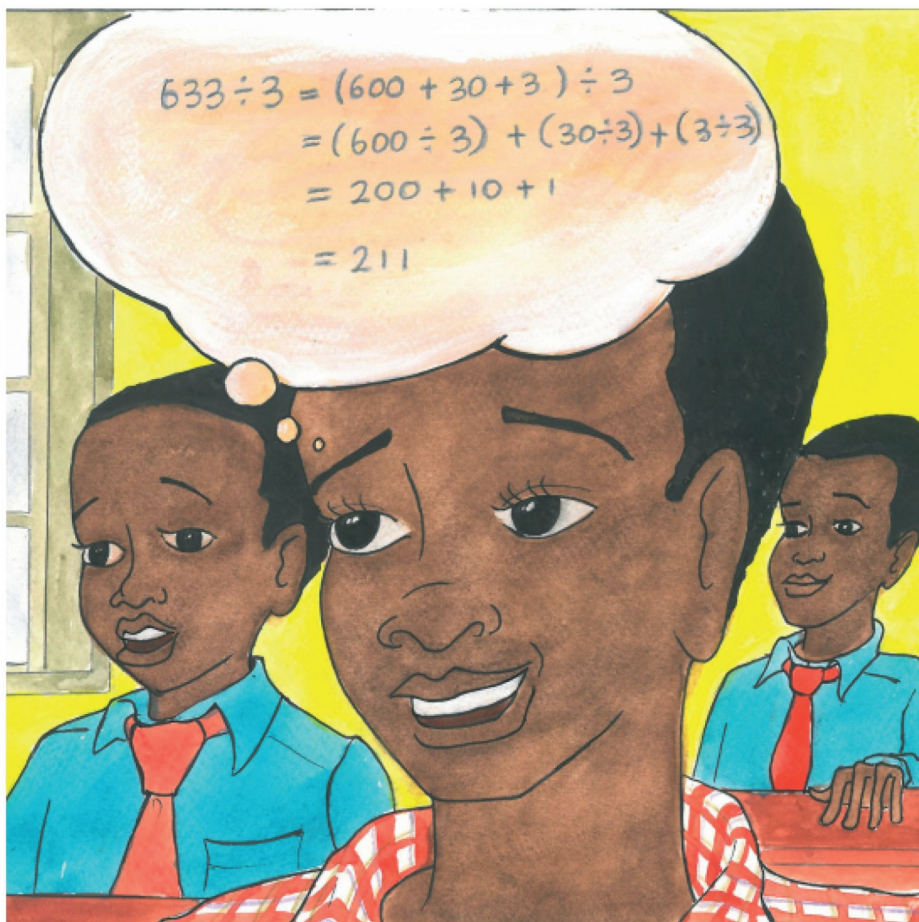
Ditshwanelo tsa bana ke tse di kgethegileng, tsa batho ba dingwaga tse di ka fa tlase ga 18.



Bana botlhe ba na le ditshwanelo tse di lekanang. A o itse ditshwanelo tsa gago? "Tshwanelo ya go tlhokomelwa," Ntombi a rialo.

"Tshwanelo ya go nna le leina!" Nsuku a goa.

"Tshwanelo ya go nna mo nageng ya me, kgotsa naga nngwe le nngwe," Shadrack a rialo.



"Tshwanelo ya go babalesega," Melanie a bua jalo ka kwa morago.

"Tshwanelo ya thuto," Arnold a rialo.

"Tshwanelo ya go SE utlwise botlhoko kgotsa go sotlakiwa," Nhlayselo a rialo.

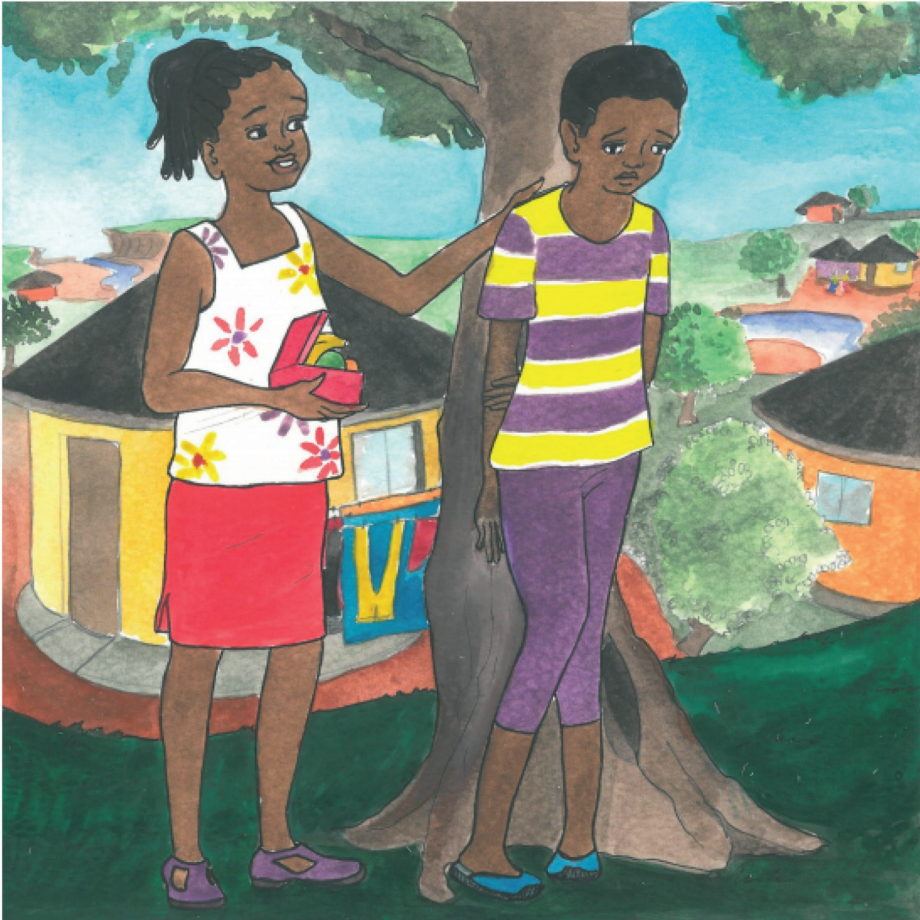


Tse ke dingwe tsa ditshwanelo tsa bana.

Re na le ditshwanelo mme e bile gape re na le ditiro. Re na le ditshwanelo le maikarabelo.

Ke maikarabelo afe a bana ba nang le ona?

“Maikarabelo a go thusa kwa gae,” Ann a rialo.



“Maikarabelo a go tlhokomela mmele le tlhaloganyo ya me le go nna le pholo e e edileng,” Nsuku a rialo.

“Tiro ya go tshola ba bangwe ka moo re batlang go tsholwa ka teng,” Cheyeza a rialo.

“Maikarabelo a go dira ka natla kwa sekolong,” Mixo a rialo.



“Maikarabelo a go tlotla ditshwanelo tsa ba bangwe,” Lerato a rialo.

Mongwe le mongwe wa rona o na le maikarabelo a go tlotla ditshwanelo tsa batho ba bangwe.

Batho botlhe ba a lekana.

Letsatsi la Ditshwanelo tsa Botho ke ka ga kgololesego le tekatekano go botlhe.



—Dipotso

1. Goreng 21 Mopitlwe e le letsatsi la boikhutso mo Aforika Borwa?
2. Ditshwanelo tsa botho ke eng?
3. Naya dikao tse tharo tsa ditshwanelo tsa bana.
4. Batlisisa ka ga Molao wa Ditshwanelo wa Aforika Borwa. Kwala lenaane la ditshwanelo.



—Dibuka tse di mo motseletseleng o

- Letsatsi la Poelano
- Letsatsi la Kgololosego
- Letsatsi la Ngwaoboswa
- Letsatsi la Ditshwanelo tsa Botho
- Letsatsi la Basadi
- Letsatsi la Badiri
- Letsatsi la Bašwa



Kanelo e tshamilwe le go kwalwa ka puo ya Xitsonga, jaaka karolo ya porojeke ya didirswa tsa go buisa ya Zenex Ulwazi Lwethu ya 2020.