



---

Lilanga Lemalungelo Elunfu ligujwa eNingizimu  
Afrika ngemhlaka 21 Indlovulenkhulu njalo  
ngemnyaka.

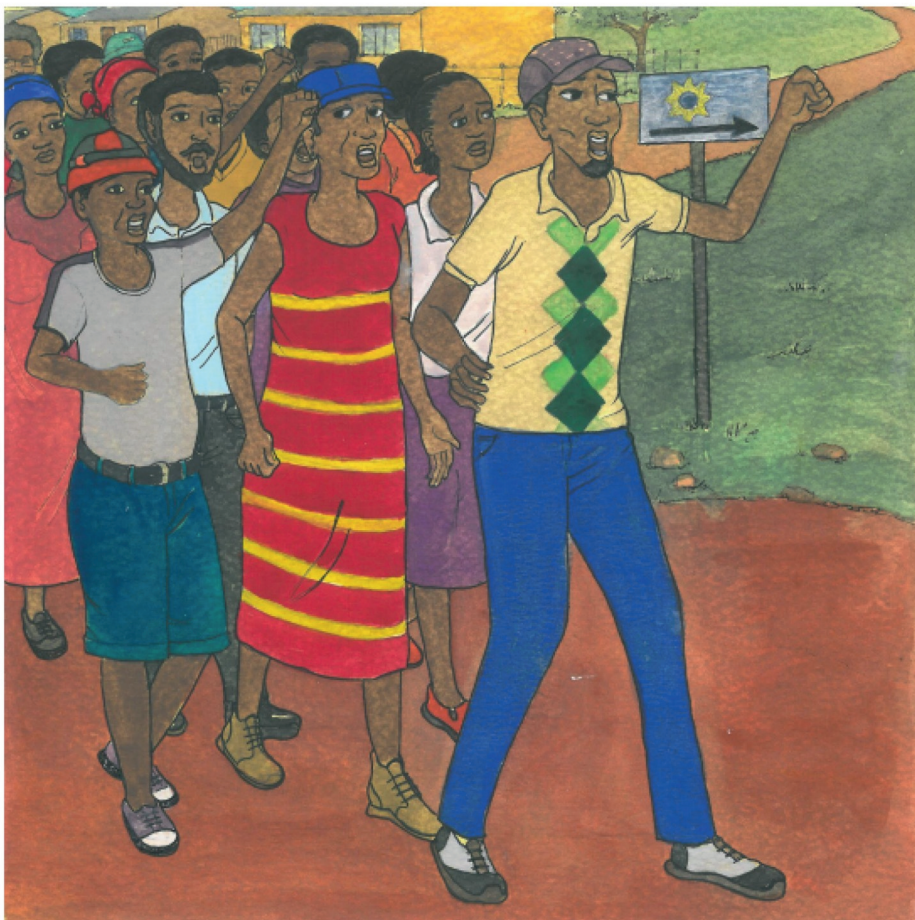
Lecwadzi yetindzaba imayelana nemlandvo kanye  
nekubaluleka kwaleliholide lesive.



Ngesikhatsi selubandlululo, bantfu labamnyama baseNingizimu Afrika bebacindzetelwe.

Bantfu balwa nelubandlululo nemitsetfo yalo lengenabo bulungiswa. Bebalwela inkhululeko nekuba nemalungelo lalinganako.

Ngemhlaka 21 Indlovulenkhulu minyaka yonkhe, sive sikhumbula bantfu baso labalwela inkhululeko.



Nga-1960 ngemhlaka 21 Indlovulenkhulu, bantfu base-Sharpeville nebaseLanga baba nemishuco.

Bebabhikisha ngenca yemitsetfo lengenabo bulungiswa yahulumende welubandlululo. Bashuca ngobe bebaphikisana 'nemtsetfo wemapasi'.

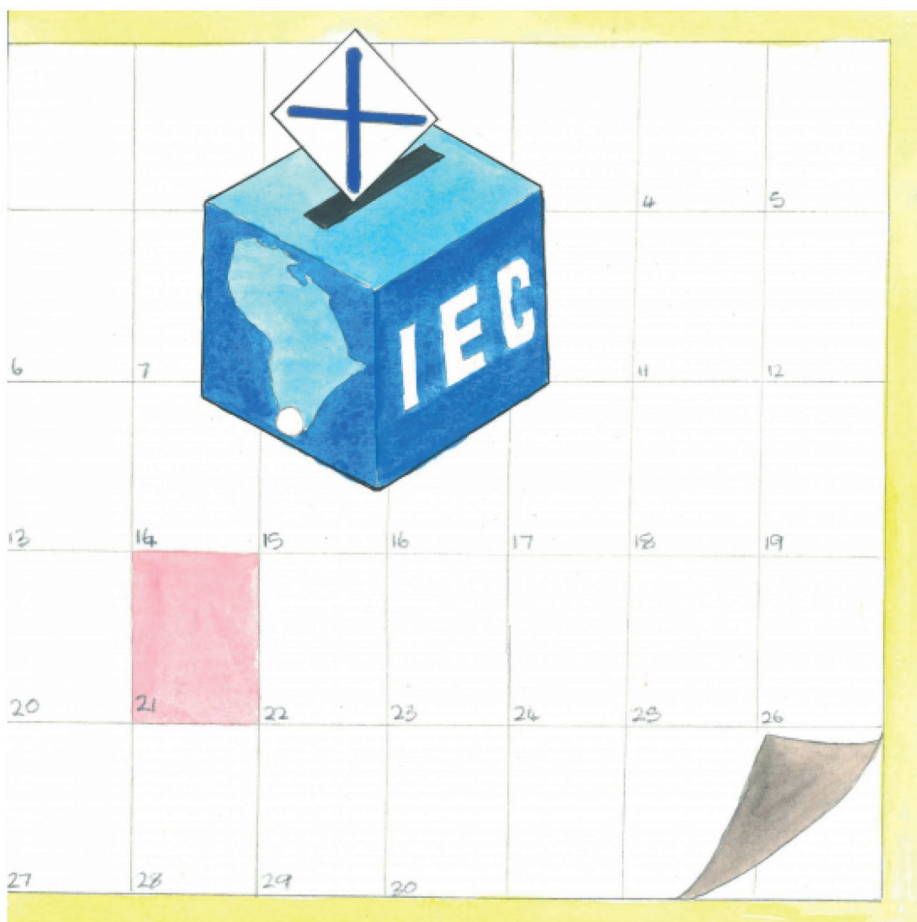
"Amandla! Ngawethu! Amandla Ngawethu!" kumemeta babhikishi.



E-Sharpeville, bebahlabelela futsi bashuca ngekuthula baya esiteshini semaphoyisa.

Kwatsi lapho emaphoyisa abona incumbi yebantfu, emaphoyisa ahlasela babhikishi.

Bantfu babaleka, labanye balimala. Kantsi labanye balahlekelwa timphilo tabo.



Umhlaka 21 Indlovulenkulu wacale wakhunjulwa njengeLilanga Lase-Sharpeville.

Lelilanga lentiwa liholide lesive ngemuva kwelukhetfo lwentsandvo yelinyenti lwa- 1994.

Sive sisuke sikhumbula bantfu labalwela inkhululeko. Lena yindlela yekutsi kubo siyabonga.



INingizimu Afrika ineMtsetfosisekelo wentsandvo yelinyenti. Bantfu lababhala loMtsetfosisekelo lomusha bebefuna kutsi bonkhe bantfu bawahloniphe emalungelo eluntfu.

UMtsetfosisekelo waseNingizimu Afrika uniketa takhamuti takhona emalungelo kanye nalokufanele tikwente. Wonkhe umuntfu unemalungelo lafanako.



Minyaka yonkhe, umhlaka 21 Indlovulenkhulu uba liholide lesive. Emahhovisi netikolwa kuyavalwa.

Leli lilanga lekugubha umkhosi wemalungelo eluntfu.  
Lilanga lekugubha umkhosi wekulingana.

Bantfu bagubha umkhosi walelilanga futsi balihloniphe ngetindlela letehlukene.



Bantwana bangagubha umkhosi walelilanga lelibalulekile ngekutsi bakhulume ngemalungelo abo njengelusha.

Yebo, bantwana nabo banawo emalungelo!

Emalungelo ebantwana aluhlobo lolukhetsekile lwemalungelo eluntfu, lentelwe bantwana labaneminyaka lengaphansi kwe-18 budzala.



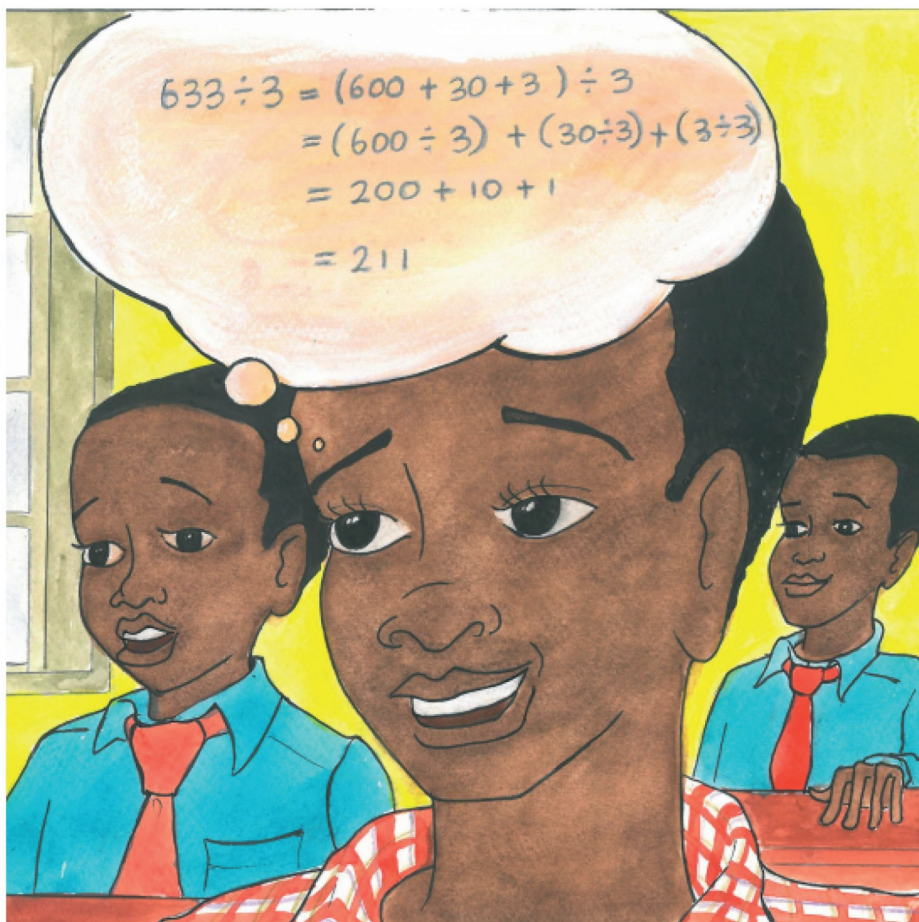


Bonkhe bantwana banemalungelo lalinganako. Wena uyawati yini emalungelo akho?

“Lilungelo lekunakekelwa,” kusho Ntombi.

“Lilungelo lekuba nelibito!” kumemeta Nsuku

“Lilungelo lekuhlala eveni lakini, nobe kulelinye live,” kusho Shadrack.



“Lilungelo lekuphepha,” kusho Melanie, emuva.

“Lilungelo lemfundvo,” kusho Arnold.

“Lilungelo lekutsi NGINGALINYATWA nobe ngihlushwe,” kusho Nhlayiselo.

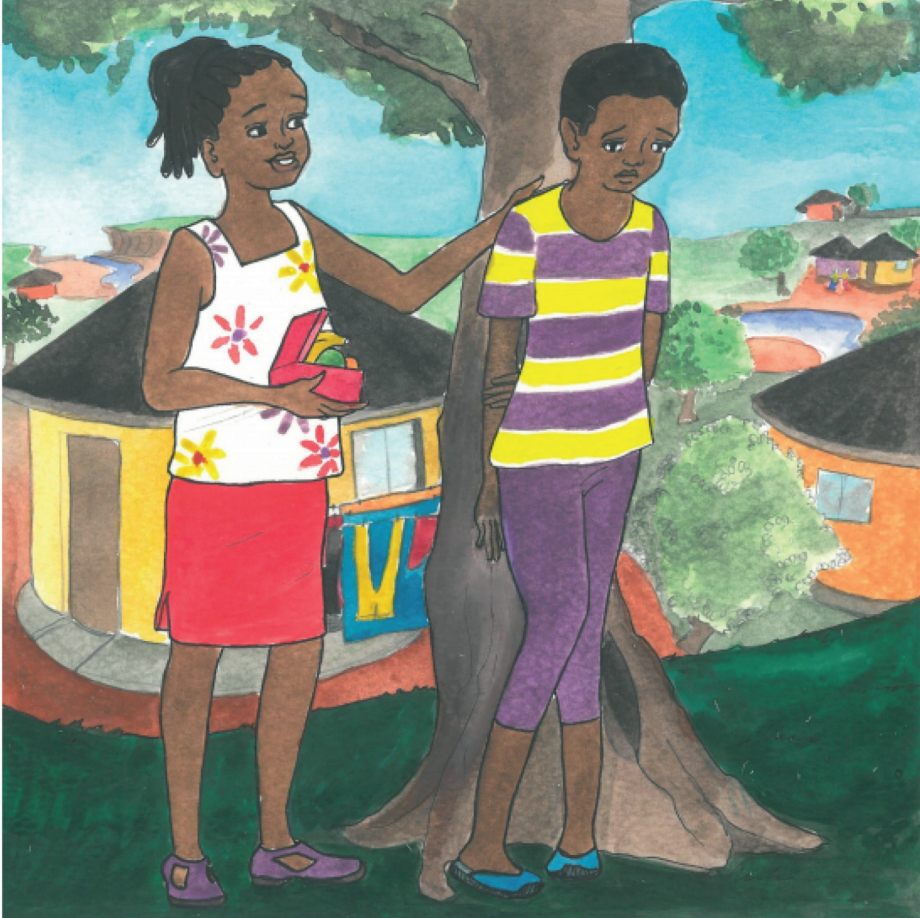


Lawo ngulamanye emalungelo bonkhe bantwana labanawo.

Sinimalungelo futsi siphindze sibe nalokufanele sikwente. Sinimalungelo kanye netibopho.

Ngutiphi tibopho bantwana labanato?

“Sibopho sekwenta imisebenti yasekhaya,” kusho Ann.



“Sibopho sekunakekela umtimba nengcondvo yami nekutsi ngihlale ngiphile kahle,” kusho Nsuku.

“Sibopho sekuphatsa labanye ngendlela natsi lesifuna basiphatse ngayo,” kusho Cheyeza.

“Sibopho sekutimisela esikolweni,” kusho Mixo.



“Sibopho sekuhlonipha emalungelo alabanye,” kusho Lerato.

Sonkhe sinesibopho sekuhlonipha emalungelo alabanye bantfu.

Bonkhe bantfu bayalingana.

Lilanga Lemalungelo Eluntfu limayelana nenkhululeko nekulingana kwabo bonkhe.



## —Imibuto

1. Yini leyenta umhlaka 21 Indlovulenkhulu ube liholide lesive eNingizimu Afrika?
2. Ayini emalungelo eluntfu?
3. Niketa tibonelo letintsatfu temalungelo ebantfwana.
4. Tfola Umculu Wemalungelo waseNingizimu Afrika. Bhala luhla lwemalungelo.



## —Tincwadzi letikuloluchungechunge

- Lilanga Lekubuyisana
- Lilanga Lenkhululeko
- Lilanga Lemagugu
- Lilanga Lemalungelo Eluntfu
- Lilanga Labomake
- Lilanga Letisebenti
- Lilanga Lalabasha



---

Lenzaba icanjwe yaphindze yabhalwa  
ngesiTsonga, njengencenye yephrojekthi yetintfo  
tekufundza te-Zenex Ulwazi Lwethu ya-2020.