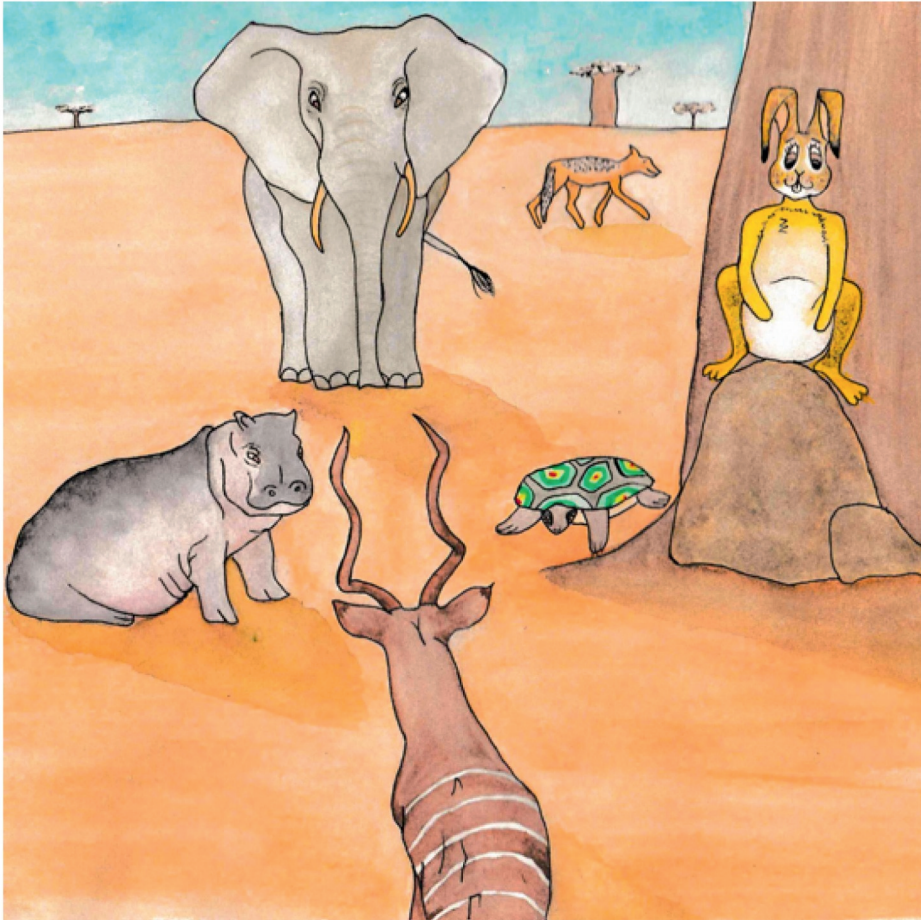




Nga n̄waha wa mmbo na tsikidzi, phukha dza ḡaka dzo mbo ḡi fhelelwa nga maḡi.

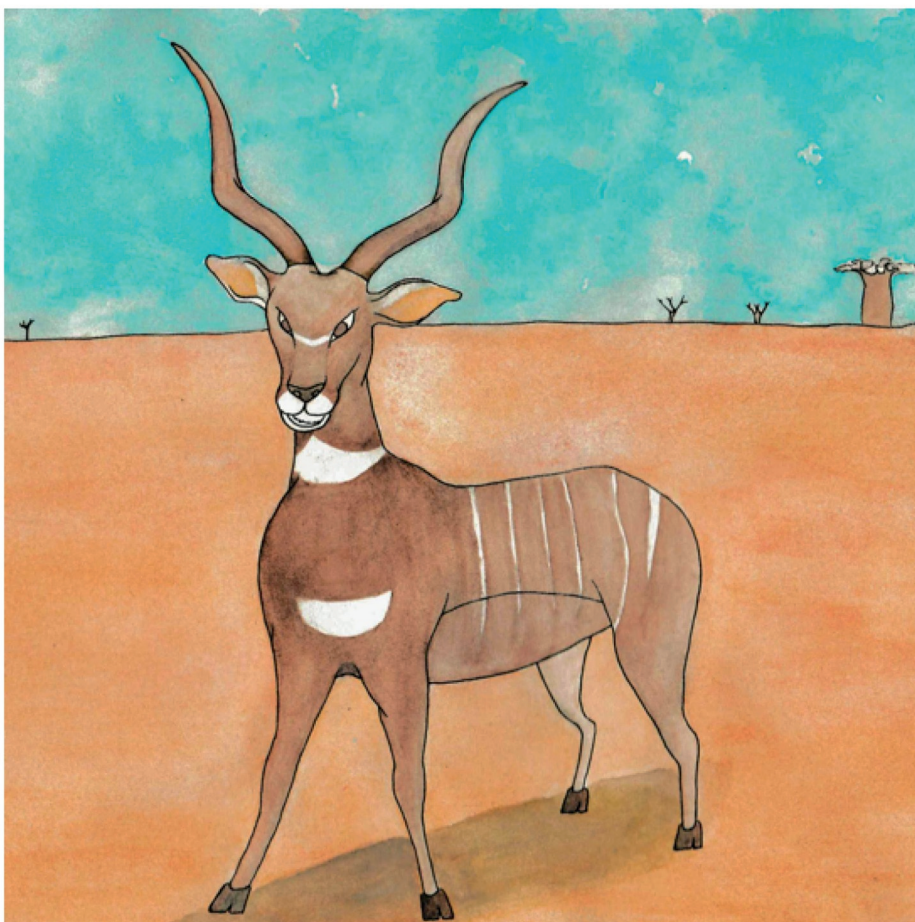
Dza sedza hoḡhe fhedzi dza sa wane tshithu.



Dza kuvhangana uri dzi wane tshipiringululi tsha thaidzo dzadzo. Phukha dzothe dza ɗa muɗanganoni, nga nɗa ha Phunguhwe.

Phunguhwe ya ri, “Ndi nga ya hani muɗanganoni na zwibode zwi nukhaho?”

Hezwi zwa sinyusa dziɲwe phukha.



Muṭanganoni, phukha dza tendelana uri dzi ḡo bwa tshisima.

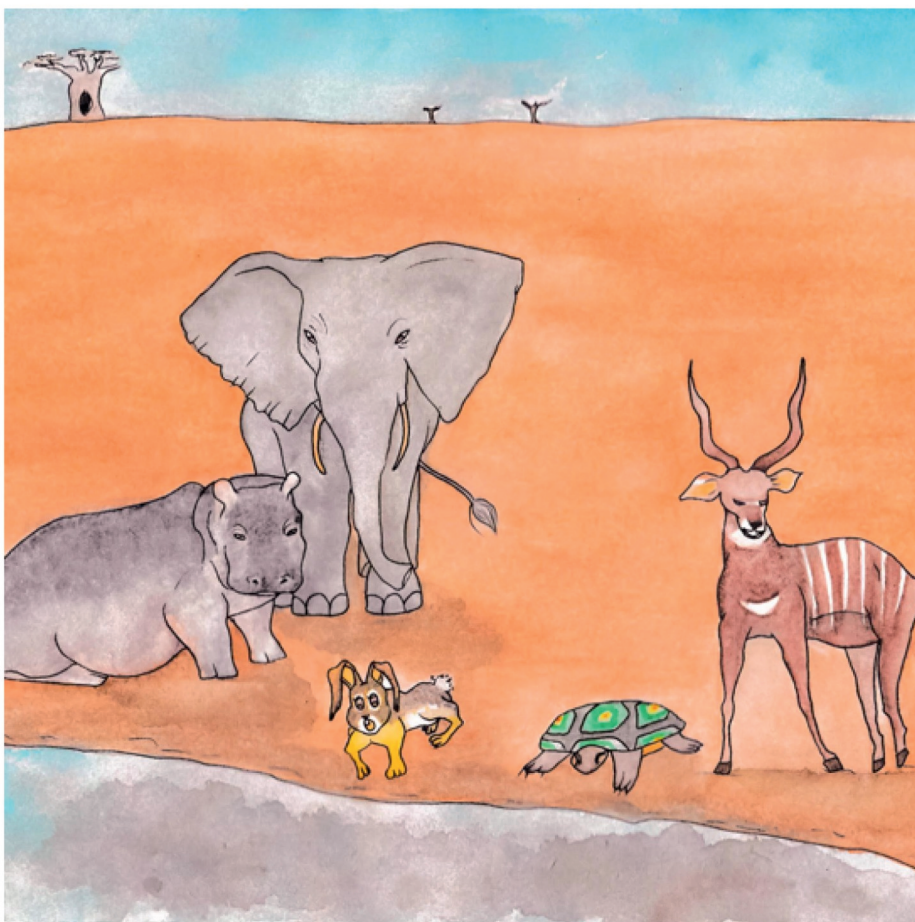
Phala, murangaphanḡa ya ri, "Tshisima tshashu tshi ḡo tsela fhasi fhasi nahone tsha aṭama. Musi tshi tshi ḡala, ri nga si fhelelwe nga maḡi."



Dzo vha dzi tshi khou imba na u tshina musi dzi tshi khou sielisana u bwa tshisima.

Mafheleloni, maḓi a phula nahone tshisima tsha ḡala maḓi.

Dzo vha dzo takala nga maanḡa. Dzo vha dzi sa athu nwa maḓi a ḡifhelelaho na o kunaho u fana na haya.



Liñwe guvha, phukha dza vhona uri hu na muthu ane a
khou tshikafhadza maḡi adzo.

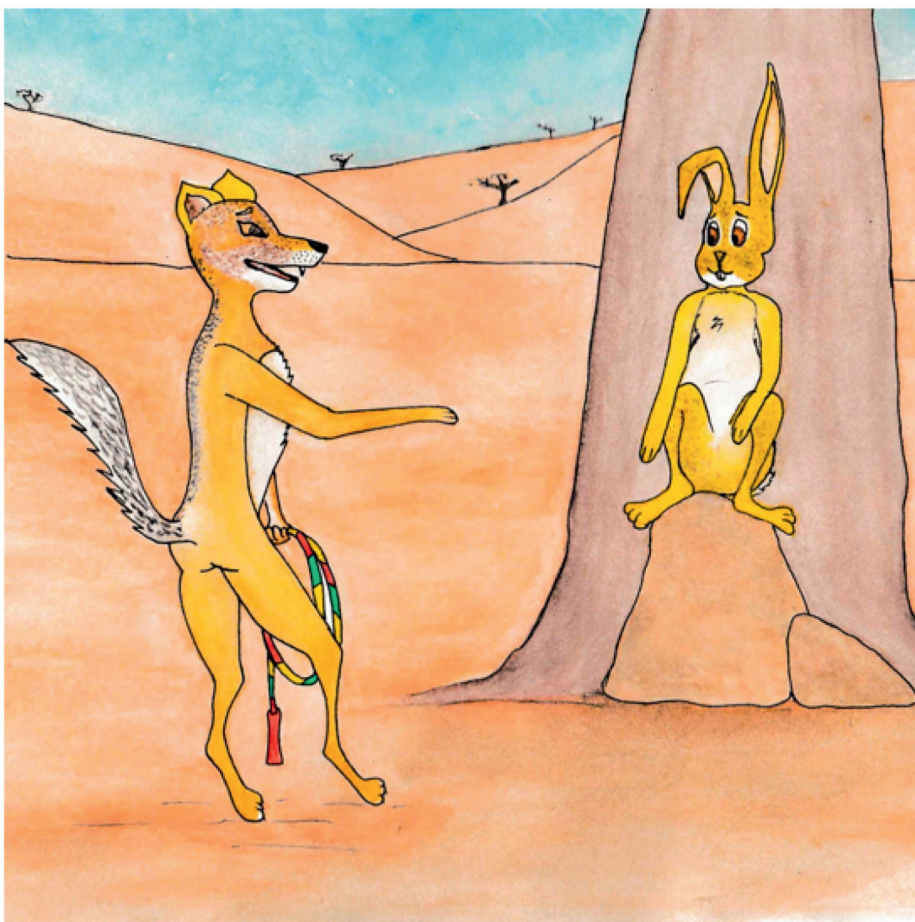
Dza sielisana u linda tshisima.



Musi Muvhuḡa wo linda tshisima, Phunguhwe ya ḡa na thambo yayo ine ya fhufha ngayo.

“Ni khou ita mini hafha?” hu vhudzisa Phunguhwe.

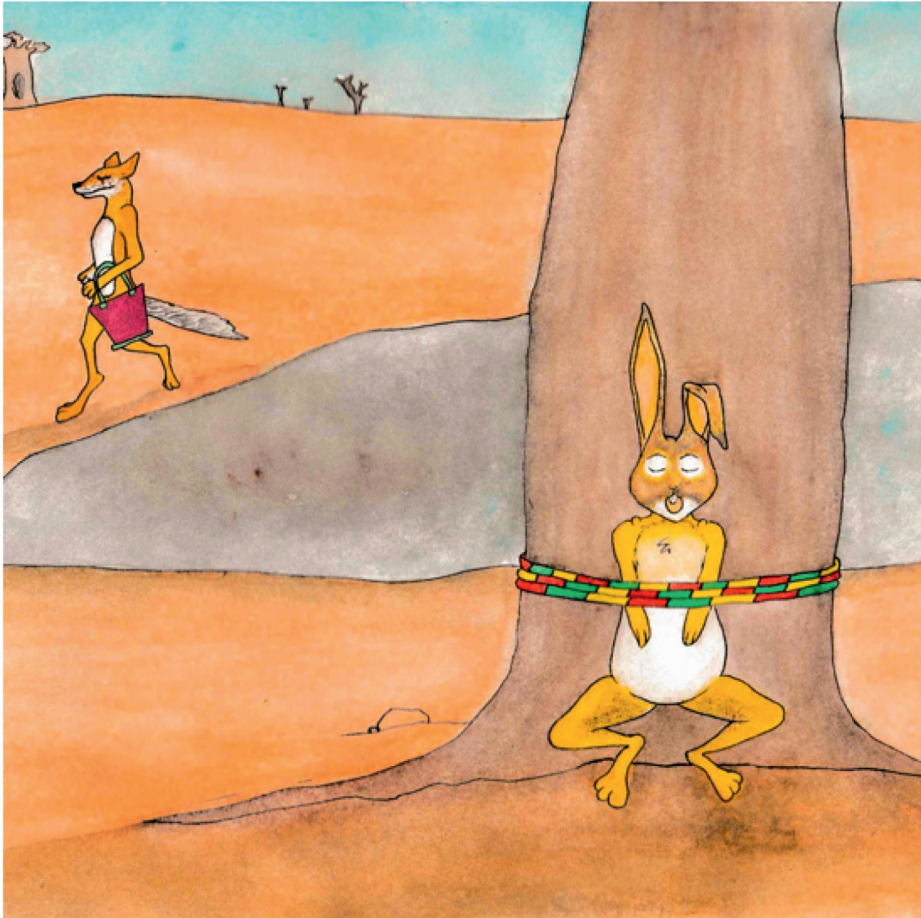
“Ndi khou linda maḡi ashu,” hu fhindula Muvhuḡa.



Phunguhwe ya humbela Muvhuḁa uri u tambe nayo.

Vha sielisana musi vha tshi khou vhojhana.

Mutambo wo vha u tshi katela uri mutambi a bonye maḁo musi a tshi khou vhojhiwa nga thambo, a vhale u swika kha tshigidi, nga murahu a vule maḁo awe. Muvhuḁa wa tenda.



Muvhuḁa wa vhoḁha Phunguhwe ya thoma u vhala u swika kha tshigidi. Muvhuḁa wa i vhoḁholola.

Nga murahu, Phunguhwe ya vhoḁha Muvhuḁa, wa vala maḁo, wa thoma u vhala.

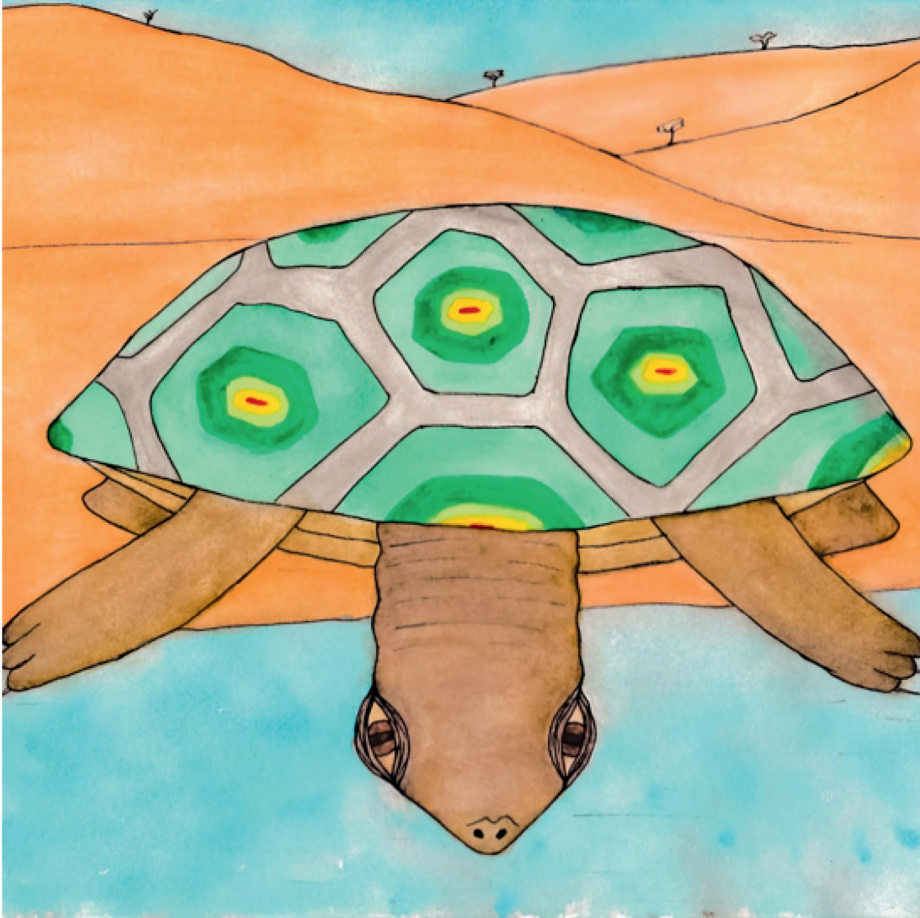
Phunguhwe ya nwa maḁi a tshisima na u bambela. Nga murahu, Phunguhwe ya ka maḁi ya ḁuwa.



Muvhuḁa wa fhedza u vhala nahone musi u tshi vula maḁo.

Phunguhwe yo vha i siho.

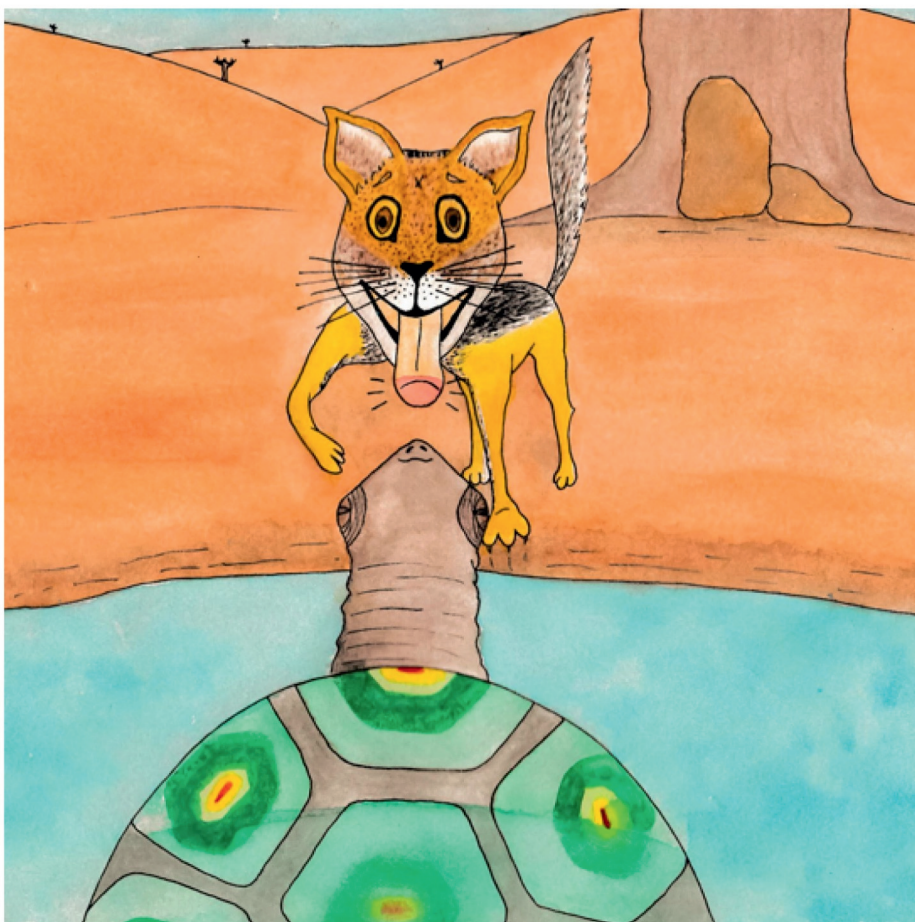
Muvhuḁa wa vhidzelela dziḁwe phuka uri dzi ḁe dzi u vhofoholole.



Phukha dzoṭhe dza bvela phanḁa dzi tshi sielisana u linda tshisima, fhedzi dzoṭhe dza balelwa u fara Phunguhwe.

Tshibode tsha ri, "Irimi ndi linde." Zwiṅwe zwipuka zwa humbula uri, "Tshibode a si phukha yo thanyaho kana yo no kona u gidima."

Tshibode tsha ṅupela tshisimani uri tshi lindele Phunguhwe.



Musi Phunguhwe i tshi swika, ya humbula uri, “A huna muthu o lindaho hafha!”

Musi i tshi nwa, ya pfa i tshi lumiwa kha ningo. Nga murahu ya kokodzelwa ngomu maḍini!

Phunguhwe yo lingedza u shavha, fhedzi tshibode tsha tou farelela. “Idani, ndo mu fara!” Tshibode tsha huwelela.



Phukha dza ḡa dza vhofha Phunguhwe. Tshibode tsha amba na Phunguhwe, “Wo ri khakhela roṭhe. Tshigwevho tshau ndi u ṭanzwa ḡayo dzashu.”

Phukha dzoṭhe dza renda Tshibode sa muhali wadzo.

U bva nga ḡeneḷo ḡuvha, phukha dzo takalela u nwa maḡi o kunaho hu si na dinani.