



Khathaza o vha a tshi funwa nga maandā. Vhabebi vhawe vho vha vha tshi mu itela zwoṭhe zwine a funa.

Khathaza o vha e ene musidzana e eṭhe.

O vha e na khaladzi dza rathi.

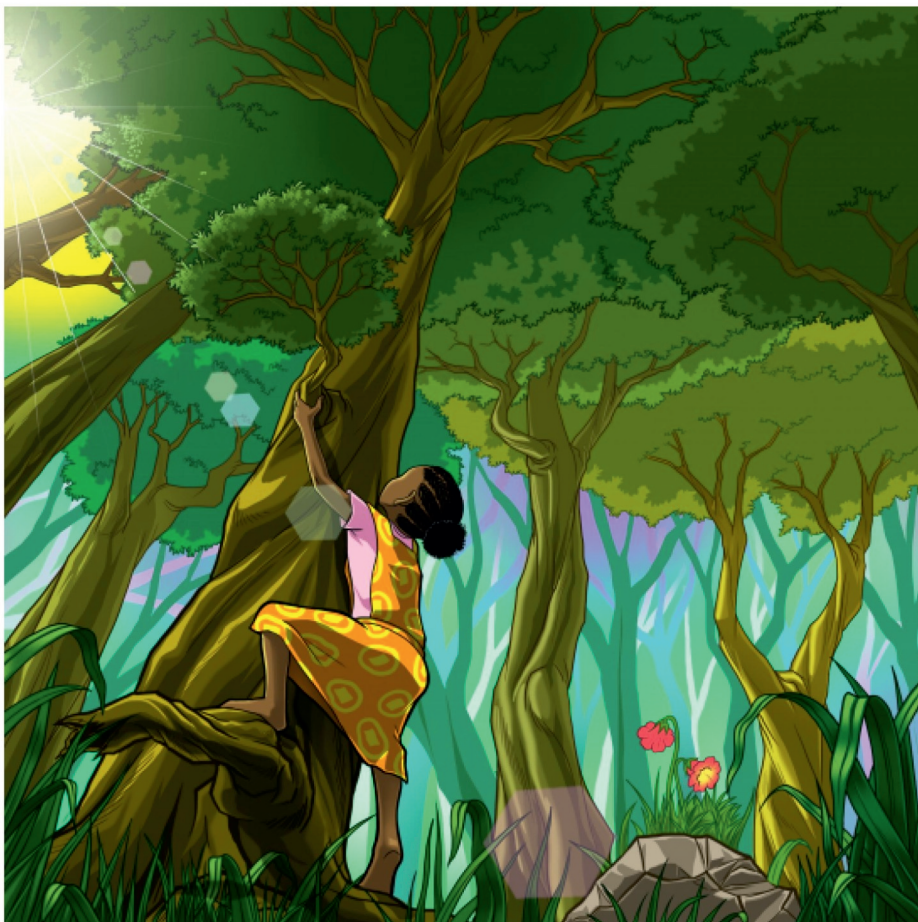
Vhabebi vha Khathaza vho vha vho mu lema.



Liñwe ḡuvha Khathaza o vha a tshi ḡoḡa u tamba bola na khaladzi dzawe.

“Ni nga vha isala,” mme awe vha ralo vha tshi mu luvhelela.

Khaladzi dzawe dza hana u tamba bola nae. Khathaza a thoma u lila.



Nga murahu, Khathaza u a n̄enga hayani, a shavhela ḡakani.

A ḡi vhudza u ri, "Ndi ḡo vha sumbedza vhoḡhe uri a thi n̄wana."

A gonya muri mulapfu.



Vhabebi vhawe vha ɽoɽa Khathaza ɽakani u swikela vha tshi mu wana.

Vha mu luvhelela uri a tse, fhedzi a hana.



Khaladzi dzawe dzo lingedza u mu kwengweledza. Vha vhidzelela vha ri, “Khathaza, kha tse, u ɔo ɔi huvhadza.”

Muñwe wavho a lidza luimbo lune a lu funesa, vhañwe vha imba.

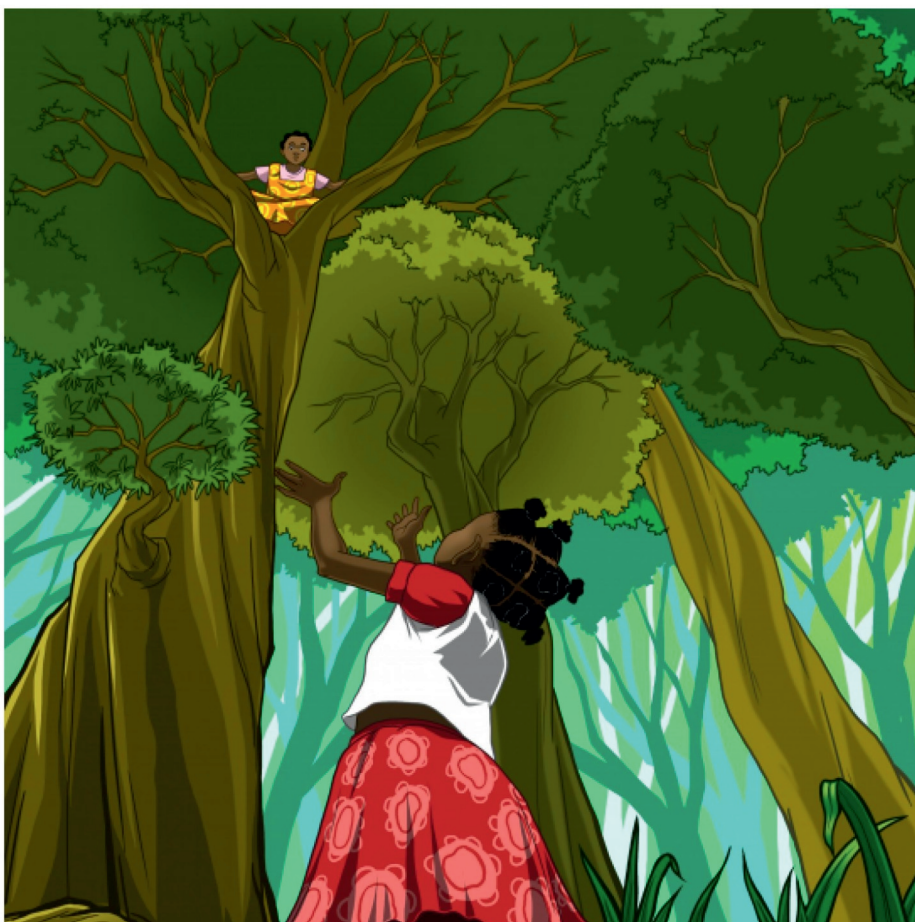


Tsinyuwo ya Khathaza ya thoma fhungudzea nga zwiṭuku
nga zwiṭuku.

U thetshesela luimbo zwo ita uri a dzike.

Na ene a thoma u imba.

Fhedzi o vha a sa athu ḡiimisela u tsa.



Khonani yawe ya mbiluni Sihle na ene a ɗa u mu ɗuɗuwedza uri a tse.

Sihle a huwelela a ri, “Khathaza, kha tse, kha tse. A thi ɗoɗi a tshi lovha.”



Sihle a lindela a sa fheli mbilu. Khathaza a fheledza o tsa.
A kuvhatedza Sihle.

Sihle a vhudzisa, “Khonani yanga, ndi ngani o shavha
hayani a gonya muri?”



Khathaza a țalutshedza a ri, “Ndo pfa ndi songo takala ngauri vhathu vhoțhe vha nnyita n̄wana.”

A engedza, “Ndo vha ndi tshi țođa u vha sumbedza uri ndi nga kona u ita tshinwe na tshinwe tshine tsha itwa nga khaladzi dzanga.”



Muṭa wa hawe wa mu itela phathi u itela u pembelela u vhuya hawe hayani a songo huvhala.

U bva nga ḽeneḽo ḽuvha, khaladzi dzawe dzo tenda Khathaza a tshi tamba bola nadzo.