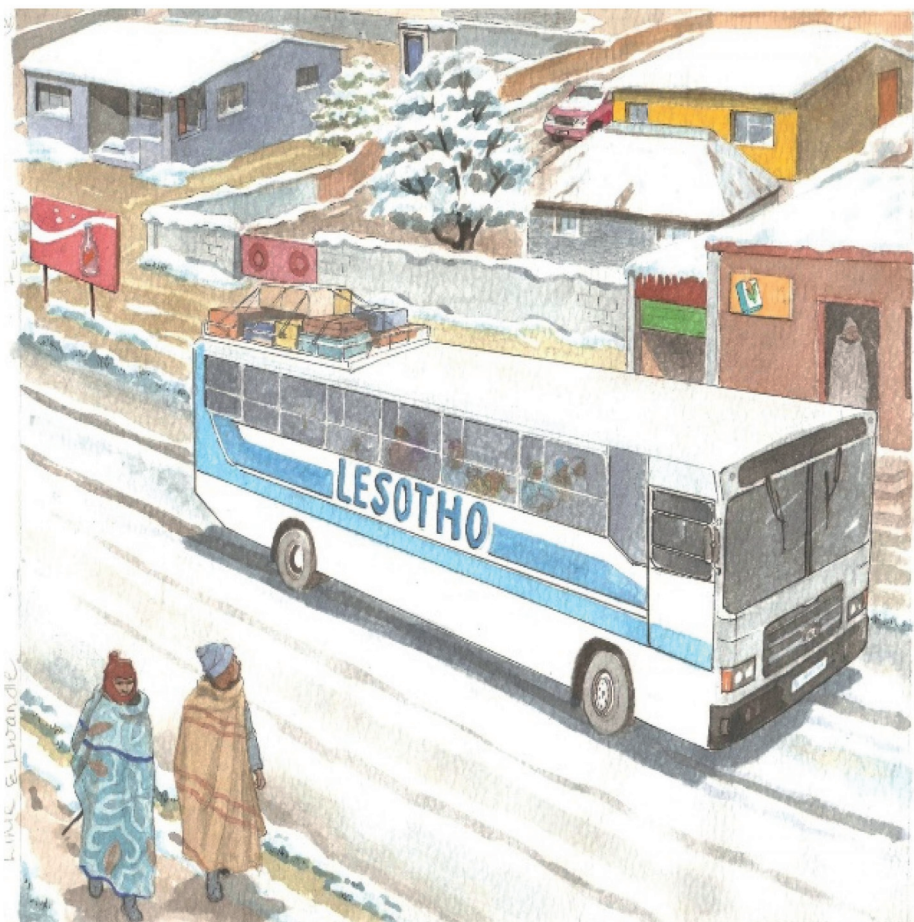




Lihle na Lwandle vha khou ya ǀisuthu u dalela malume wavho nga bisi.

Ndi lwa u thoma vha tshi dalela shango ǀeneǀi ǀiǀukuǀuku, nǀhanǀha dzithavhani.



Mukomana na murathu vha guda zwithu zwo vha tangaho vhe bisini.

“Hu na mahaxa hothehothe!” Lwandle u kha ganuko.

“A tou nga nguvho tshena ndenya yo adzaho hothe,” hu tenda Lihle.



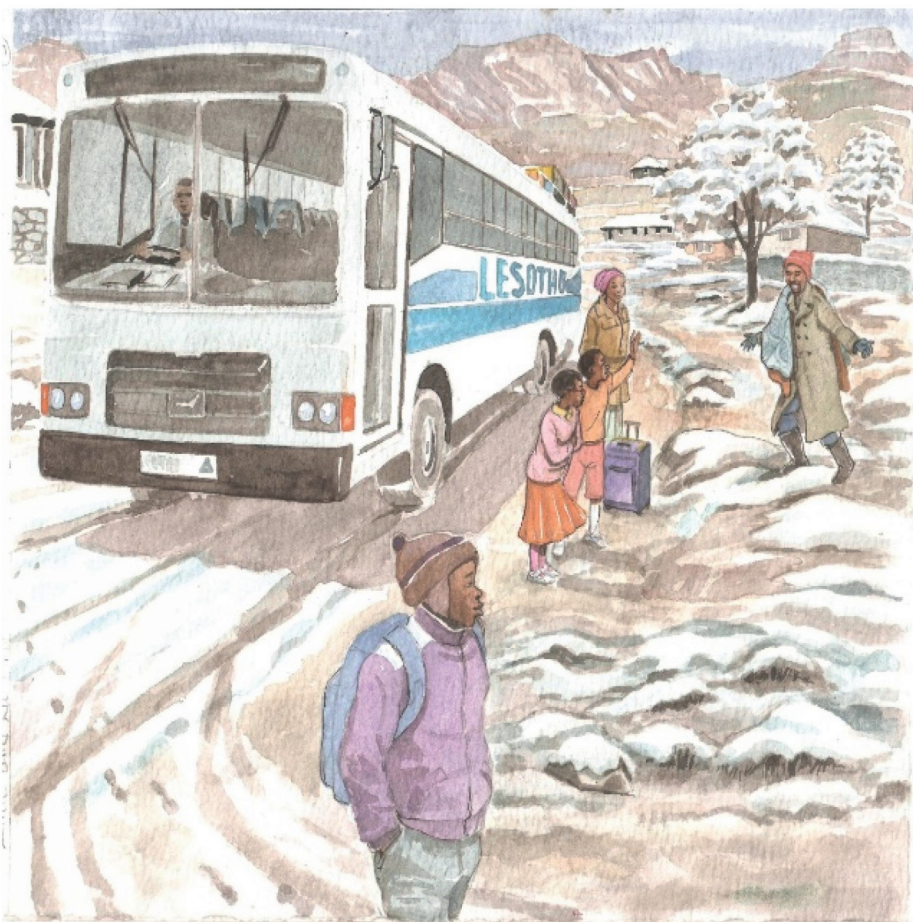
Lwandle a ri, “Ndi a takala ngauri bisi i na hithara!”.

“Ee, nḡa hu khou rothola. Thempheretsha dza vhuriha dza fhando dzi vha fhasifhasi,” hu amba Lihle.



“Thempheretsha dza vhuriha fhana Lisuthu dzi fhasi kha dza hayani Limpopo,” Lihle u isa phanḁa.

“Brrr, ndi fulufhela uri ndo paka zwiambaro zwa vhududo zwo eḁanaho,” hu amba Lwandle.



Bisi ya swika, vhasidzana vha imisela zwanḡa malume wavho. Vho ambara dzhasi ljhulu, tshikhafu na muḡadzi.

“Ee-ee!” Lwandle u khou tetemela musi a tshi tsa bisini.



Dzhesi dza vhasidzana ndi tsekene a si dza mutsho wa fhana.

Malume vho ḡela vhaḡuhulu vhavho ngu vho dzo nakaho dza vhududo.

“No ḡanganedzwa fhana phephoni!” vha tshi lumelisa.



“Thogomelani ni tshi tshimbila, fhasi hu na ayisi hu a suvha,”
vha tshi sevha.

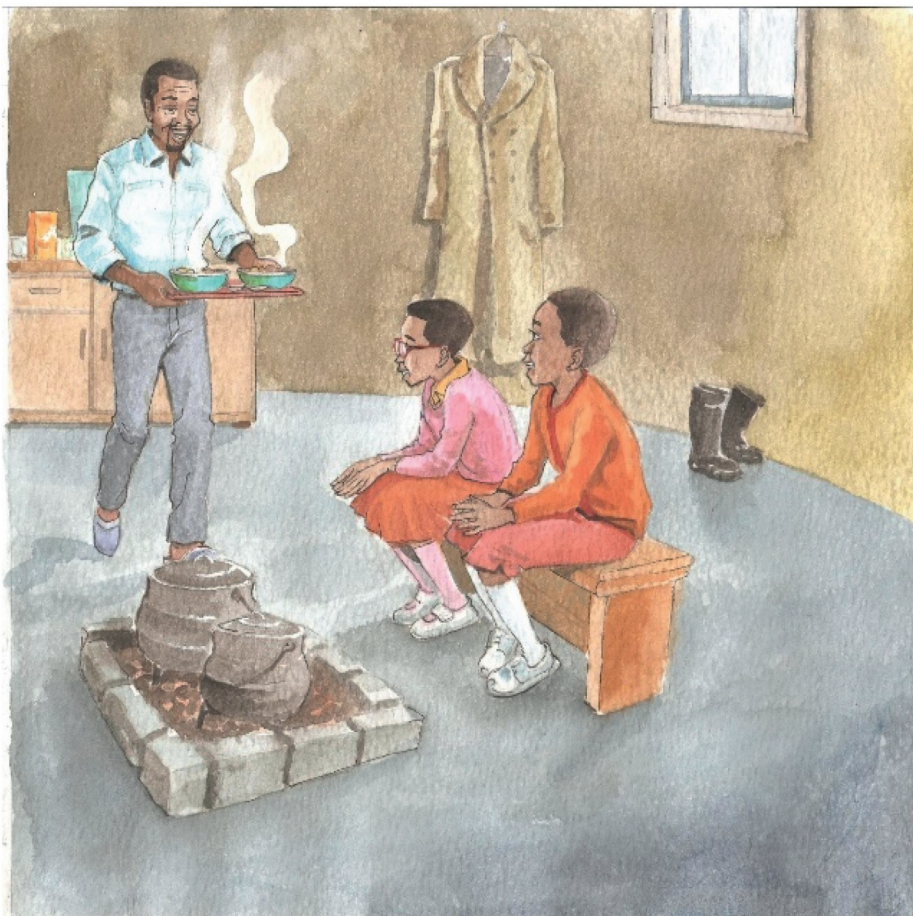
Vha fhira sambi liṭuku la nngu dza wulu dzo kuvhangano
uri dzi dudele.



Hatsi vhu re fhasi ha mahaḡa ho oma nahone vhu buraweni.

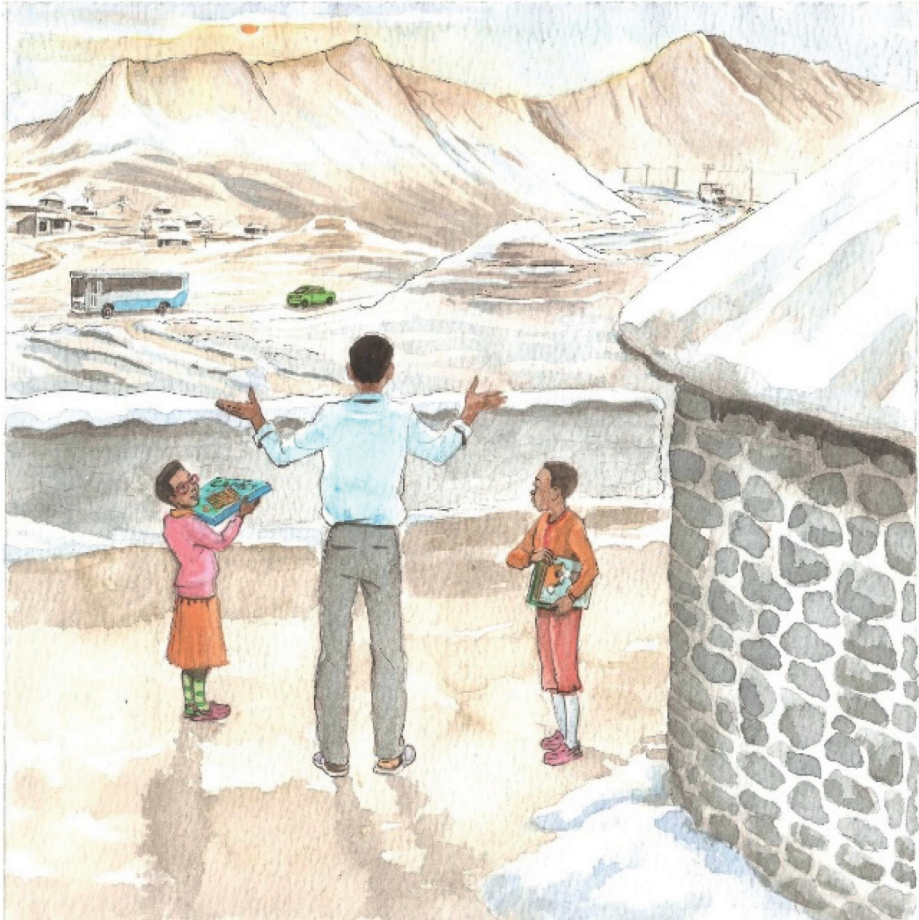
Pfulo ya zwifuwo a si nnzhi.

Vhuriha zwimela zwinzhi a zwi aluwi kana zwi a fa.



Vhasidzana vha dzula muliloni tshiṭangani tsha malume.

Vha vha fha ṅama ya kholomo na maḡabula a fhisaho.
“Zwiṭiwa zwa sialala zwa Lekhotloane, zwi ḡo ni dudedza,”
vha tshi amba.



“Nga vhuriha, ḡuvha ḡi a lenga u tsha ḡa ḡavhanya u kovhela. Ri ḡo ḡwa ḡuni,” hu amba Malume.

“Ro ḡa na dzibugu na mitambo!” vhasidzana vha fhindula mazha.



—Mbudziso

1. Lihle na Lwandle vha ngafhi? Wanani afho fhethu kha mapa.
2. Ndi khalañwaha ifhio?
3. Wanani maipfi mararu a țalutshedzaho khalañwaha iyo.
4. Ñwalani zwiambaro zwiña zwa vhuriha.
5. Vhuriha ha ǁisuthu vhu a fana na hune na dzula hone? ǁalutshedzani.
6. Ni takalelesa vhuriha ha ngafhi? Ndi ngani?