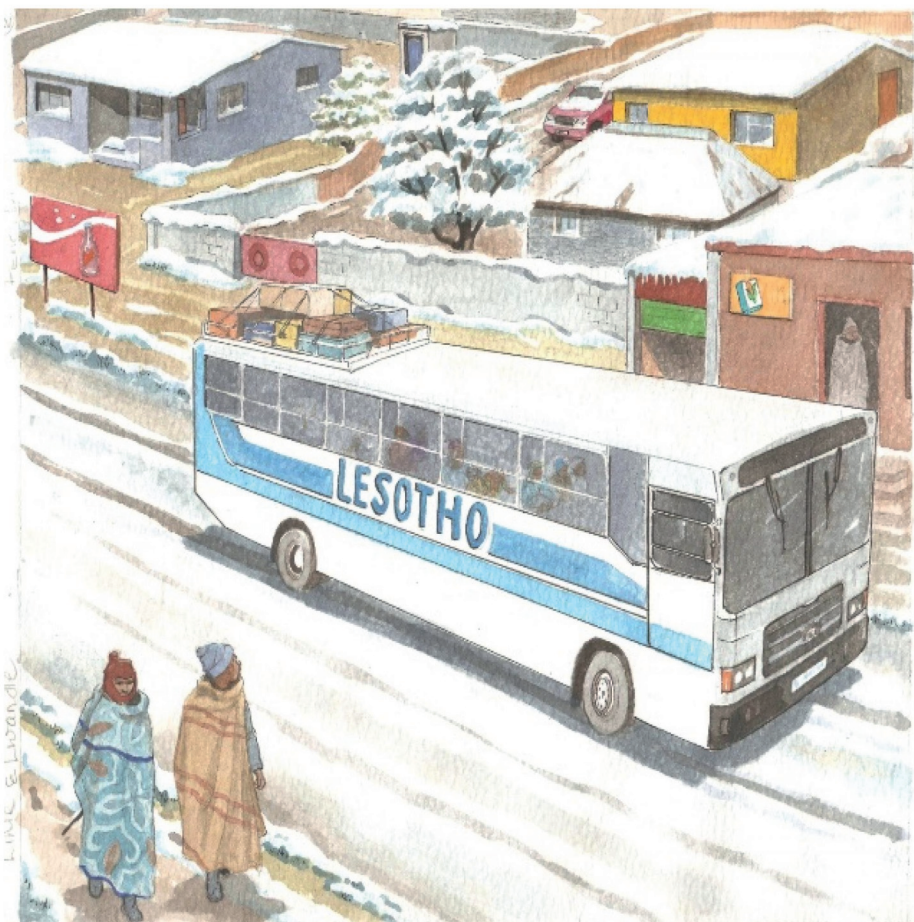




ULihle noLwandle bahamba ngebhasi betyelela umalume wabo eLesotho.

Bayaqala ukuya kweli lizwe lincinci lisezintabeni eziphakamileyo.



Ezi ntombi zibuka yonke into ezingqongileyo njengoko zisebhasini.

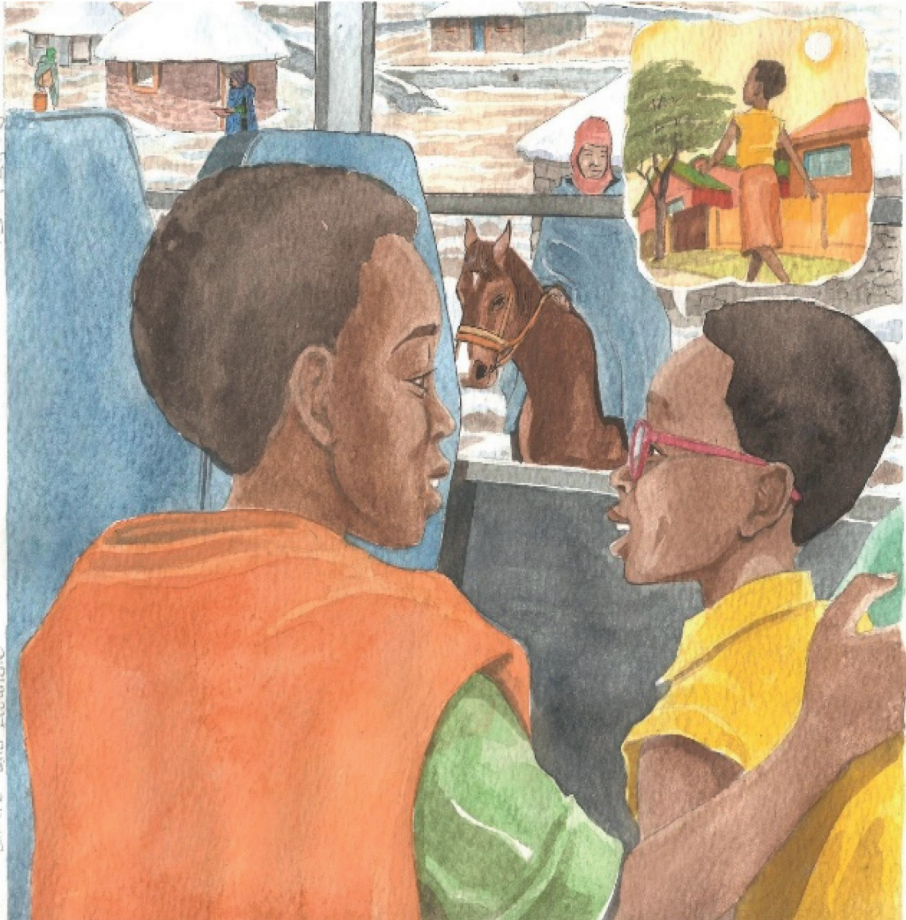
“Kukho ikhephu ezindaweni zonke!” utsho uLwandle evuya.

ULihle uyavuma esithi, “Lifana nengubo enkulu emhlophe egqume yonke into.”



ULwandle uthi, “Ndiyavuya ngoba kushushu ngaphakathi kule bhasi!”

“Ewe, kuza kubanda kakhulu phandle. Amaqondo obushushu ebusika ayehla kakhulu,” utsho uLihle.



ULihle uqhubeka athi, “Amaqondo obushushu ebusika eLesotho abanda kakhulu kunasekhaya eLimpopo.”

“Yhu, ndiyathemba ndipakishe izinxibo ezifudumeleyo nezaneleyo,” utsho uLwandle.



Iyafika ibhasi, kwaye amantombazana aziphakamisele phezulu izandla ebulisa ekwavuyela umalume wawo.

Unxibe idyasi enkulu, isikhafu nomnqwazi.

“Yeha ke!” uLwandle uyaqhaqhaazela ngeli xesha aphumayo.



Ijezi ezinxitywe ngala mantombazana azifudumalanga,
aziwafanelanga amaqondo obushushu alapha.

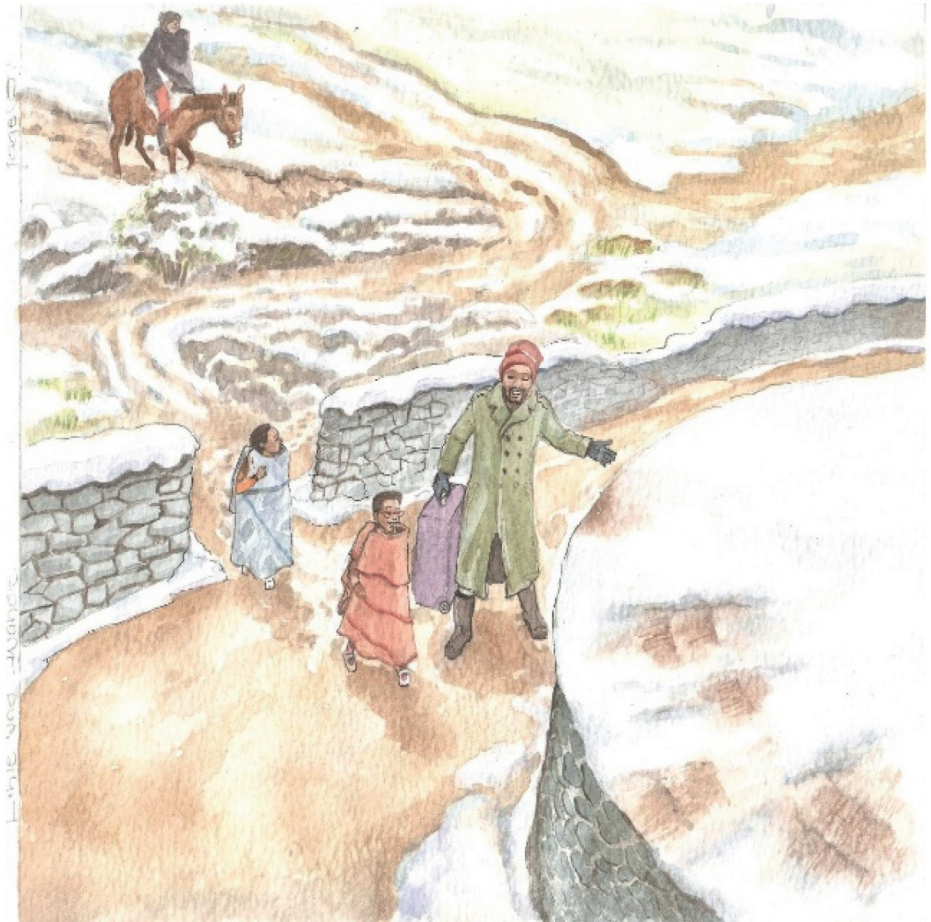
Umalume ubaphathele iingubo ezintle nezishushu
abatshana bakhe.

“Namkelekile ebusika!” uyabulisa esitsho.



Ulumkisa esithi, “Niqaphele ukuba ninyathela phi, kukho umkhenkce kwaye kumtyibilizi.”

Bagqitha ezigusheni ezinoboya, ziqukene ndawonye ngeenjongo zokuzigcina zifudumele.

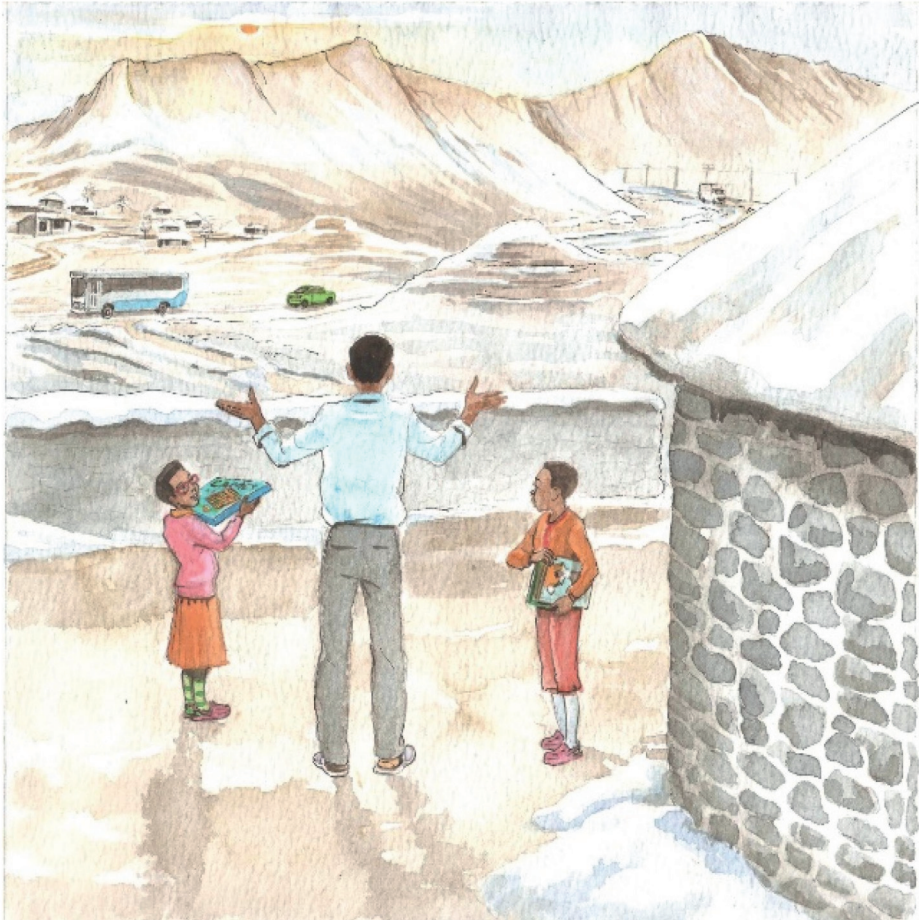


Phantsi kwekhephu, ingca yomile yada yamdaka ngebala.
Ayininzanga ingca enokutyiwa zizilwanyana.
Izityalo ezininzi ziyayeka ukukhula okanye ziyafa ebusika.



Amantombazana ahlala ngasemlilweni kuronta kamalume wawo.

Uwanika inyama yenkomo eshushu neetapile. Uthi, "Oku kutya kwesiNtu kuthiwa yi'lekhlotloane' kuza kunifudumeza."



Umalume uthi, “Ebusika, ilanga liphuma kade, lize likhawuleze ukutshona. Sizakuba sendlwini ixesha elide.”

La mantombazana aphenhula ngexesha elinye esithi, “Sizilungiselele ukuba sifunde iincwadi sizixakekise nangemidlalwana!”



—Imibuzo

1. Uphi uLihle noLwandle? Yikhangeleni kwimaphu le ndawo.
2. Kungeliphi ixesha lonyaka ngoku?
3. Khangela amagama ama3 alichazayo eli xesha lonyaka.
4. Zichaze uze uzidwelise izinxibo Zasebusika ezi4.
5. Ubusika baseLesotho buyafana nobendawo ohlala kuyo? Cacisa.
6. Uthanda ubusika beyiphi indawo? Ngoba?