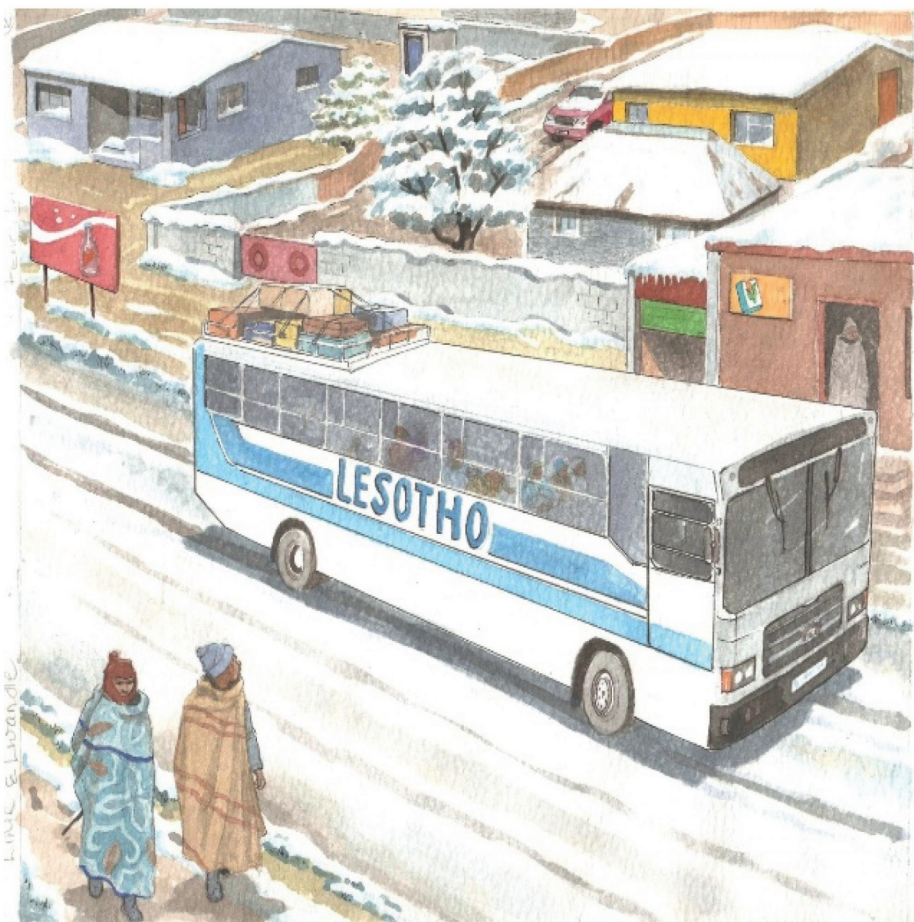




Lihle le Lwandle ba palame bese ho tihakela maloma bona  
Lesotho.

Ke leeto la bona la pele naheng e nyenyane e dithabeng.



Banana ba ithuta ka tikoloho ya bona ba sa le beseng.

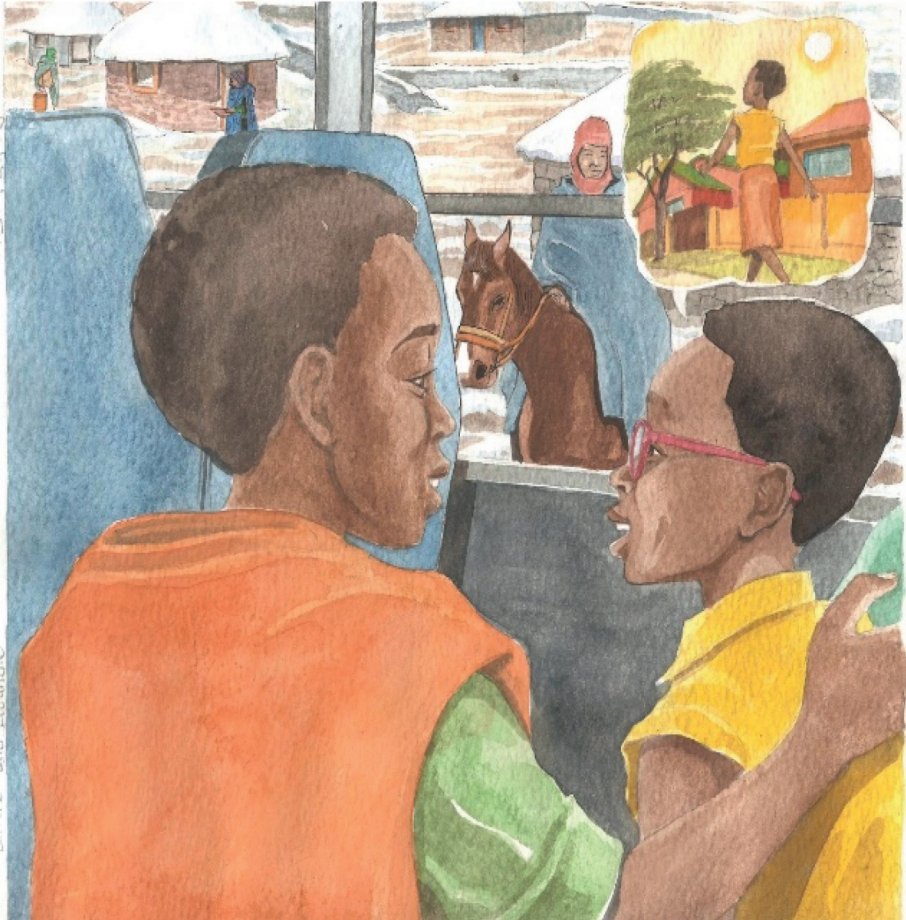
“Ho lehlwa hohle,” ho kgotsa Lwandle.

“Ekare kobo e tshweu e kwahetseng tsohle,” ke Lihle a dumela.



“Ke thabile bese e futhumetse ka hare!” ho khotsa Lwandle.

“Ee, ho a bata kantle. Mariha tempereitjha e ba ka tlasa kgwamo,” ho rialo Lihle.



“Mariha ditempereitjha Lesotho di bata ho feta hae Limpopo,” Lihle o tswela pele.

“Brrr, ke tshepa hore ke pakile diaparo tse lekaneng tse mofuthu,” ho rialo Lwandle.



Bese ya fihla mme banana ba phahamisetsa malomabona matsoho. O apere jase e kgolo, sekhafo le katiba.

“Ee-ee!” Lwandle a thothomela ha a tswela kantele.



Dijeresi tsa banana di bobebe haholo bakeng sa tempereitjha ya mona.

Malome o tletse batjhana dikobo tse ntle tse mofuthu.

“Le amoheleile mariheng!” ke malome a dumedisa.



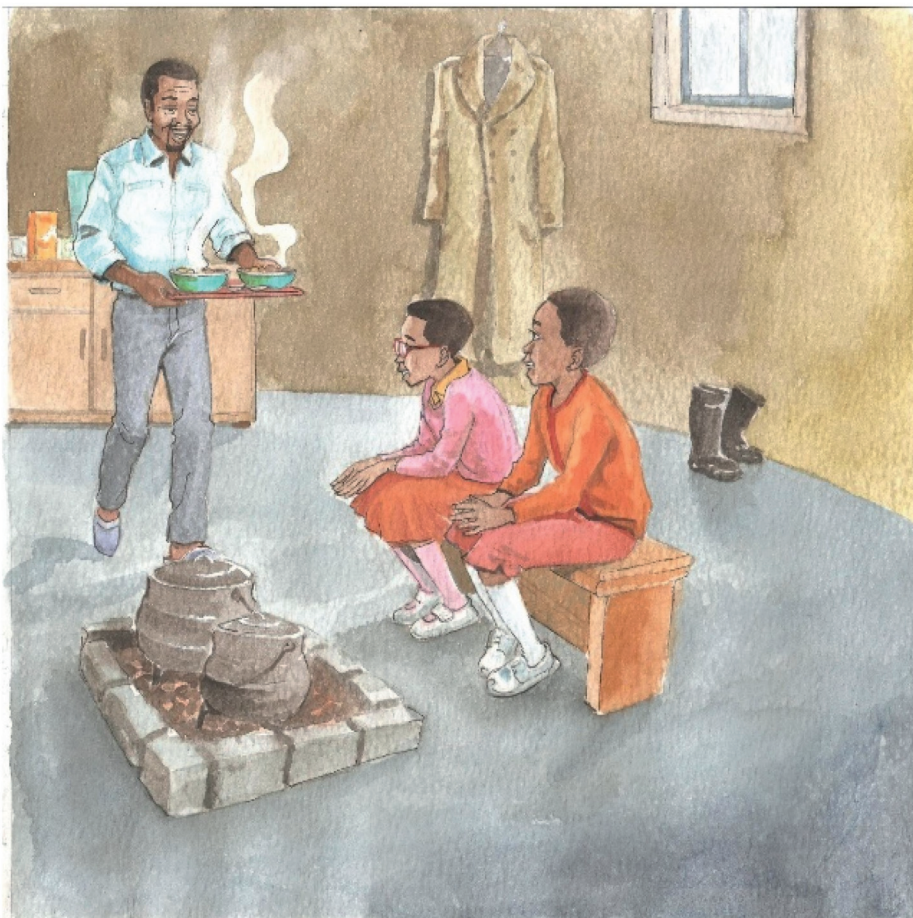
“Hlokomelang moo le hatang, ho leqhwa ebile ho a thella,” o a ba hlokomedisa.

Ba feta sehlopha sa dinku tse boyahadi di bokane hore di futhumale.



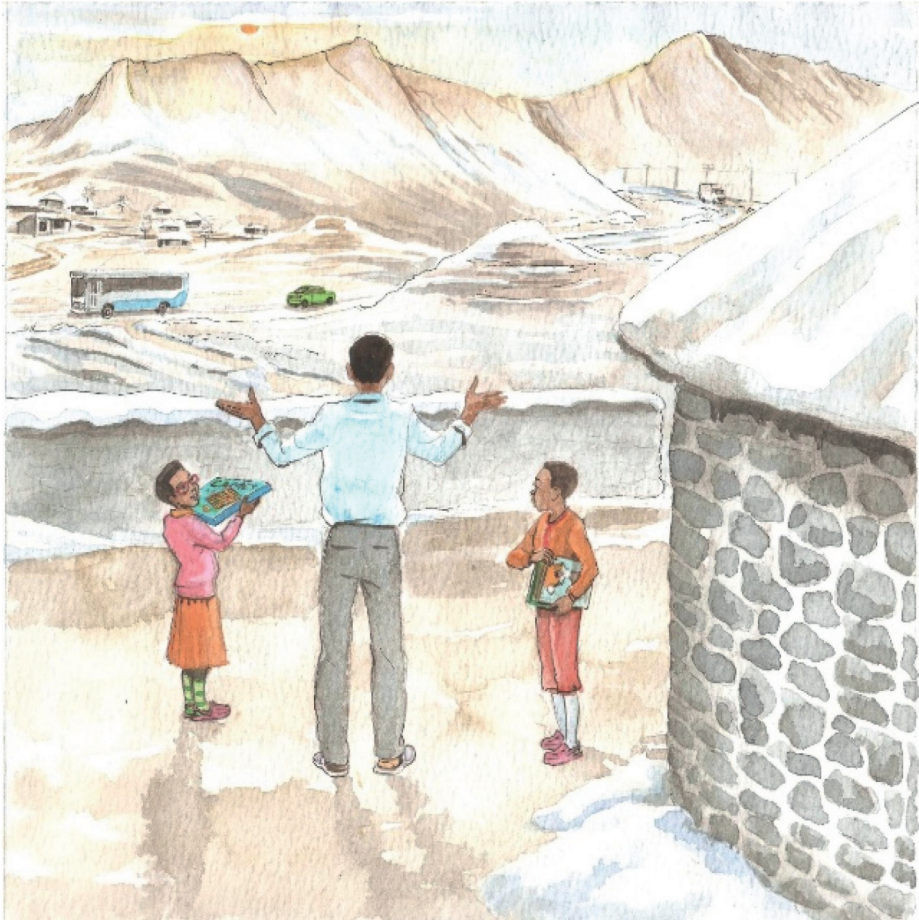
Ka tlasa lehlwa jwang bo omme ebile bo sootho.  
Jwang bo a fokola hore diphoofolo di kgone ho fula.  
Dijalo tse ngata di kgaotsa ho hola kapa di a shwa mariha.





Banana ba ora mollo ka motlotlwaneng wa malome.

O ba fa nama ditapole tse tjhesang. "Lekgotlwane lena le tla le futhumetsa," a rialo.



“Mariha, letsatsi le dieha ho tjhaba empa le dikela ka pele.  
Nakong e ngata re dula ka tlung,” ho rialo malome.

“Re ikemiseditse ka dibuka le dipapadi,” banana ba buela  
hong.



## —Dipotso

1. Lihle le Lwandle ba hokae? Fumana sebaka seo mmapeng
2. Ke sehla se fe selemong?
3. Fana ka mantswe a mararo a hlalosing sehla sena.
4. Bolela diaparo tse nne tsa mariha.
5. Mariha a Lesotho a tshwana le a moo o dulang? Hlalosa.
6. O rata mariha a ho kae? Hobaneng?