



# Lihle le Lwandle ba ithuta ka Mariha

Ndivhuho Mutsila  
Vusi Malindi





Lihle le Lwandle ba palame bese ho tjhakela maloma bona Lesotho.

Ke leeto la bona la pele naheng e nyenyane e dithabeng.





Banana ba ithuta ka tikoloho ya bona ba sa le beseng.

“Ho lehlwa hohle,” ho kgotsa Lwandle.

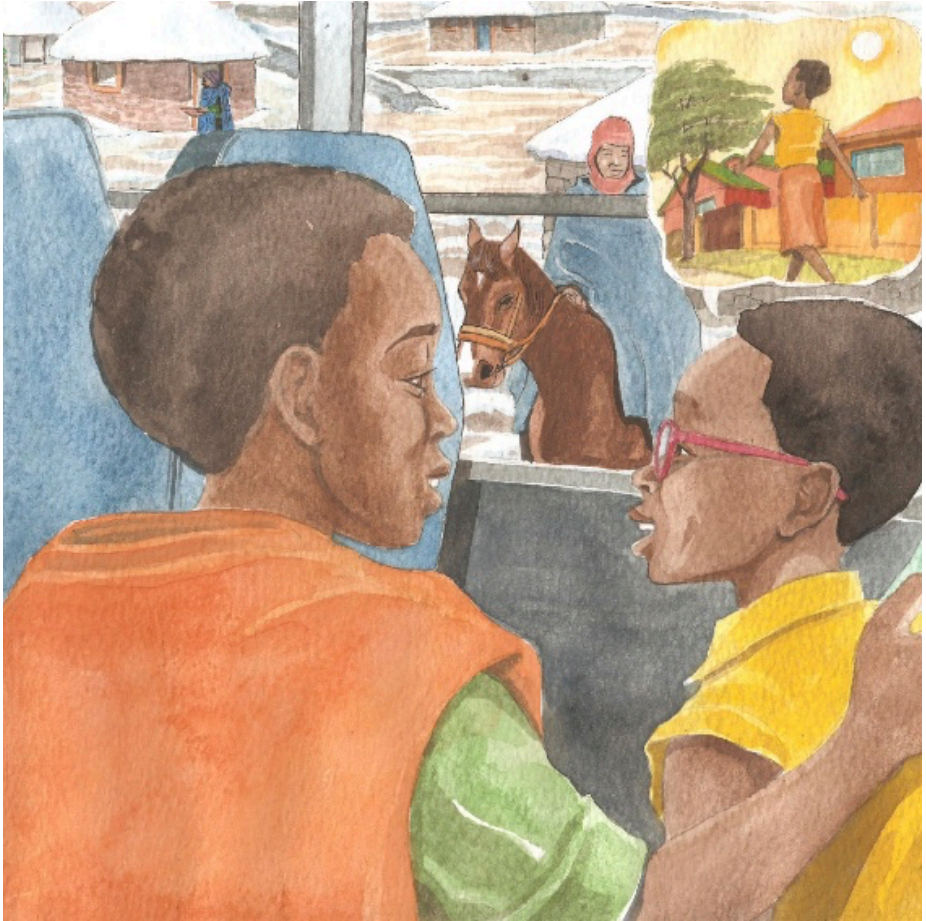
“Ekare kobo e tshweu e kwahetseng tsohle,” ke Lihle a dumela.



“Ke thabile bese e futhumetse ka hare!” ho khotsa Lwandle.

“Ee, ho a bata kantle. Mariha tempereitjha e ba ka tlasa kgwamo,” ho rialo Lihle.





“Mariha ditempereitjha Lesotho di bata ho feta hae Limpopo,” Lihle o tswela pele.

“Brrr, ke tshepa hore ke pakile diaparo tse lekaneng tse mofuthu,” ho rialo Lwandle.



Bese ya fihla mme banana ba phahamisetsa malomabona matsoho. O apere jase e kgolo, sekhafo le katiba.

“Ee-ee!” Lwandle a thothomela ha a tswela kante.





Dijeresi tsa banana di bobebe haholo bakeng sa tempereitjha ya mona.

Malome o tletse batjhana dikobo tse ntle tse mofuthu.

“Le amoheleile mariheng!” ke malome a dumedisa.



“Hlokomelang moo le hatang, ho leqhwa ebile ho a thella,” o a ba hlokomedisa.

Ba feta sehlopha sa dinku tse boyahadi di bokane hore di futhumale.





Ka tlasa lehlwa jwang bo omme ebile bo sootho.

Jwang bo a fokola hore diphoofolo di kgone ho fula.

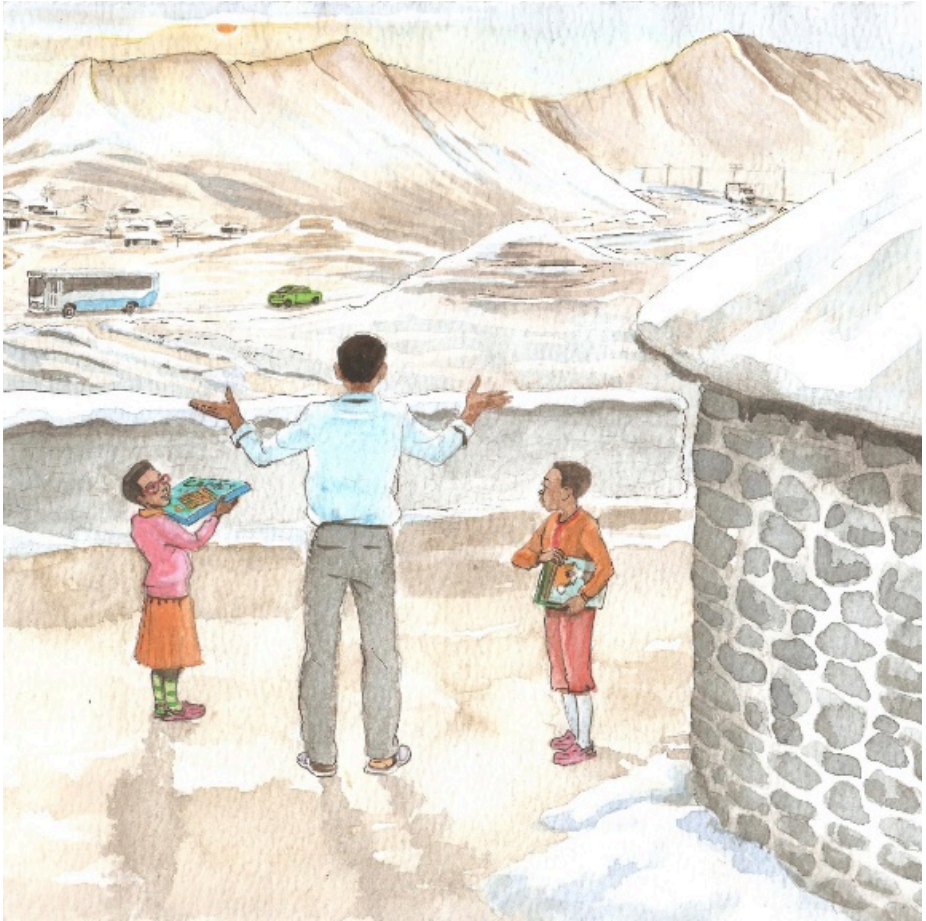
Dijalo tse ngata di kgaotsa ho hola kapa di a shwa mariha.



Banana ba ora mollo ka motlotlwaneng wa malome.

O ba fa nama ditapole tse tjhesang.  
“Lekgotlwane lena le tla le futhumetsa,” a rialo.





“Mariha, letsatsi le dieha ho tjhaba empa le dikela ka pele. Nakong e ngata re dula ka tlung,” ho rialo malome.

“Re ikemiseditse ka dibuka le dipapadi,” banana ba buela hong.

## —Dipotso

1. Lihle le Lwandle ba hokae? Fumana sebaka seo mmapeng
2. Ke sehla se fe selemong?
3. Fana ka mantswe a mararo a hlalolang sehla sena.
4. Bolela diaparo tse nne tsa mariha.
5. Mariha a Lesotho a tshwana le a moo o dulang? Hlalosa.
6. O rata mariha a ho kae? Hobaneng?



Ulwazi Lwethu is a Zenex Foundation funded and initiated project to develop a series of graded and leisure African language readers and teacher support materials. This project is targeted at teaching and supporting learners in the Foundation Phase to improve their home language reading and understanding. The readers have been originated in nine African languages in collaboration with Molteno Institute for Language and Literacies, Nelson Mandela Institute for Education and Rural Development, Room to Read South Africa, and Saide. All resources are developed as Open Education Resources (OER).



NELSON MANDELA  
INSTITUTE FOR  
EDUCATION AND  
RURAL DEVELOPMENT



Room to Read®  
World Change Starts with Educated Children®

Your attribution should include the following:

Title: Lihle le Lwandle ba ithuta ka Mariha

Author/s: Ndivhuho Mutsila

Translator/s: Mathapelo Morake


Illustrator/s: Vusi Malindi

Assurer/s: Nthabiseng Tsatsi

Language: Sesotho (South Africa)

© Zenex Foundation - Saide 2023

CC BY includes the following elements:

BY  - Credit must be given to the creator

