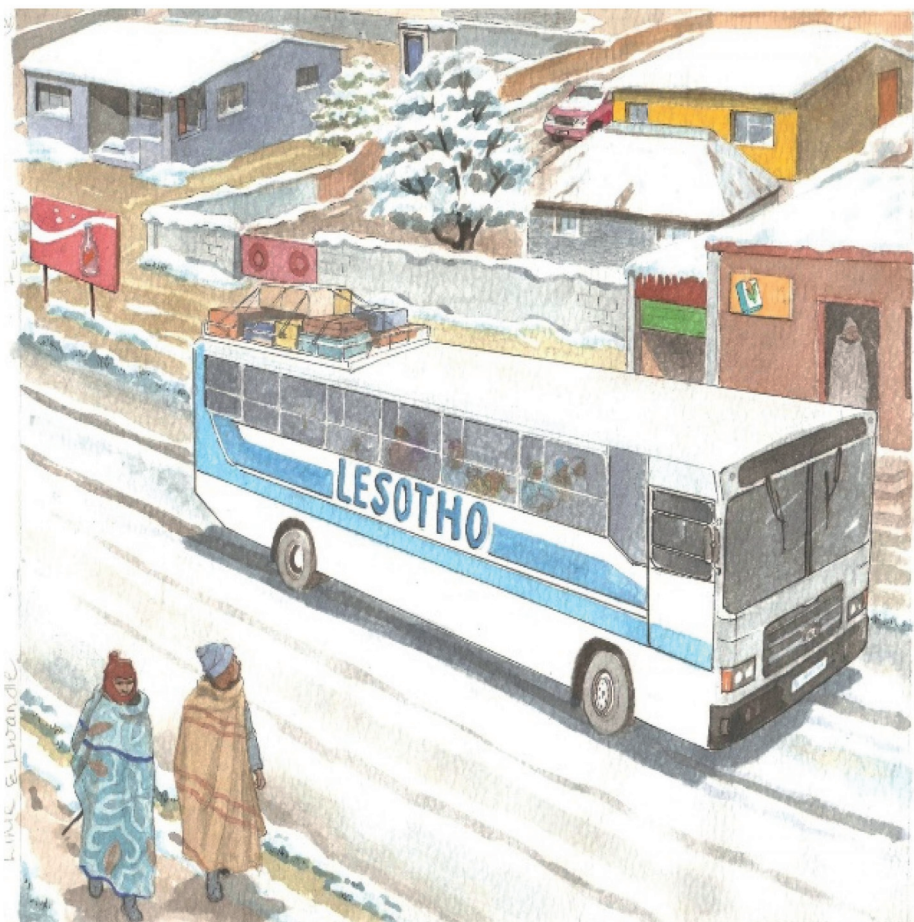




Lihle le Lwandle ba tsaya leeto ka bese go etela malomeabone kwa Lesotho.

Ke leeto la bone la ntlha go ya kwa nageng e nnye e e mo godimo ga dithaba.



Basetsana ba sekaseka tikologo ba le mo beseng.

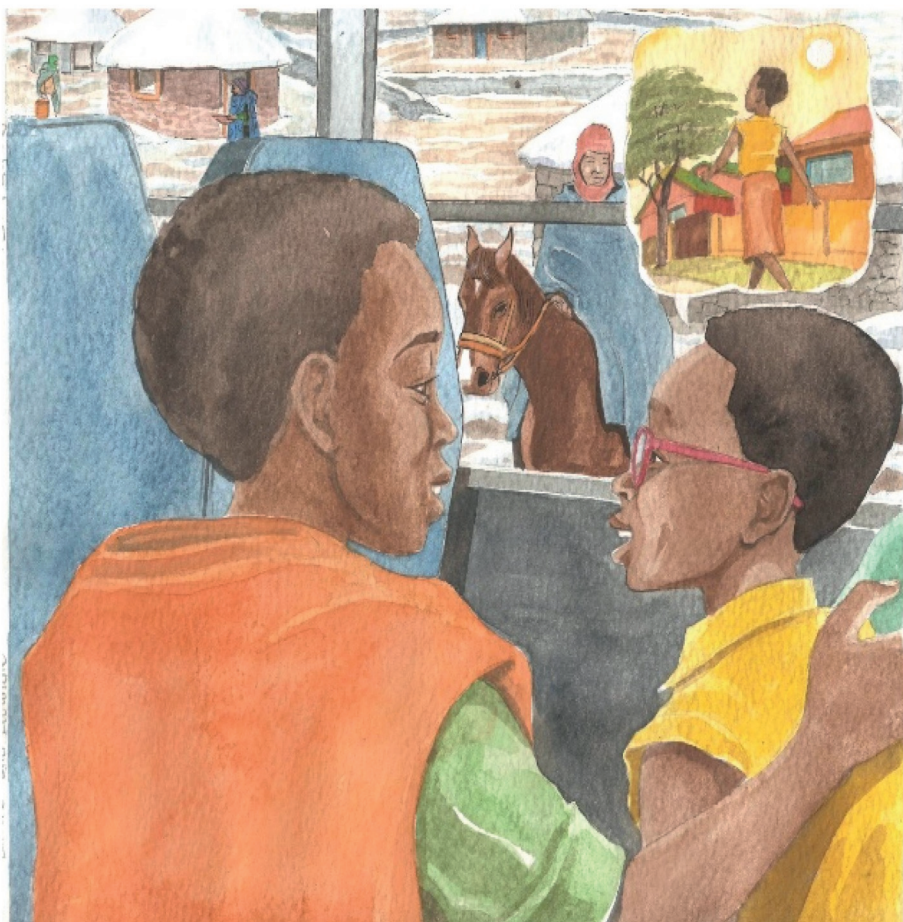
“Go na le semathane gotlhe!” ga bua Lwandle.

“E kare kobo e tshweu e kima e e apesitseng dilo tsotlhe,” ga dumela Lihle.



“Ke itumelela gore mo teng ga bese eno go bothito!”
Lwandle a makala.

“Ee, go tlaa nna tsididi kwa ntle. Dithempereitšha tsa mariga tsa mo lefelong leno di wela kwa tlase ga boswagapetla,” ga rialo Lihle.



“Dithempereitšha tsa mariga kwa Lesotho di tsididi thata go feta tsa kwa gae kwa Limpopo,” ga tswelela Lihle.

“Brrr, ke solofela gore ke phuthile diaparo tse di lekaneng tse di bothito,” ga rialo Lwandle.



Bese e a goroga mme basetsana ba gwetlha malome wa bone. O apere jase e kgolo, sekhafo, le hutshe.

“Ee-ee!” Lwandle a roroma fa a tswela kwa ntle.



Dijeresi tsa basetsana di botsatsa thata go emelana le thempereitšha ya lefelo leno.

Malome o tletse batlogolo dikobo tse dintle tse di bothito.

“Ke a le amogela mo marigeng!” a dumedisa.

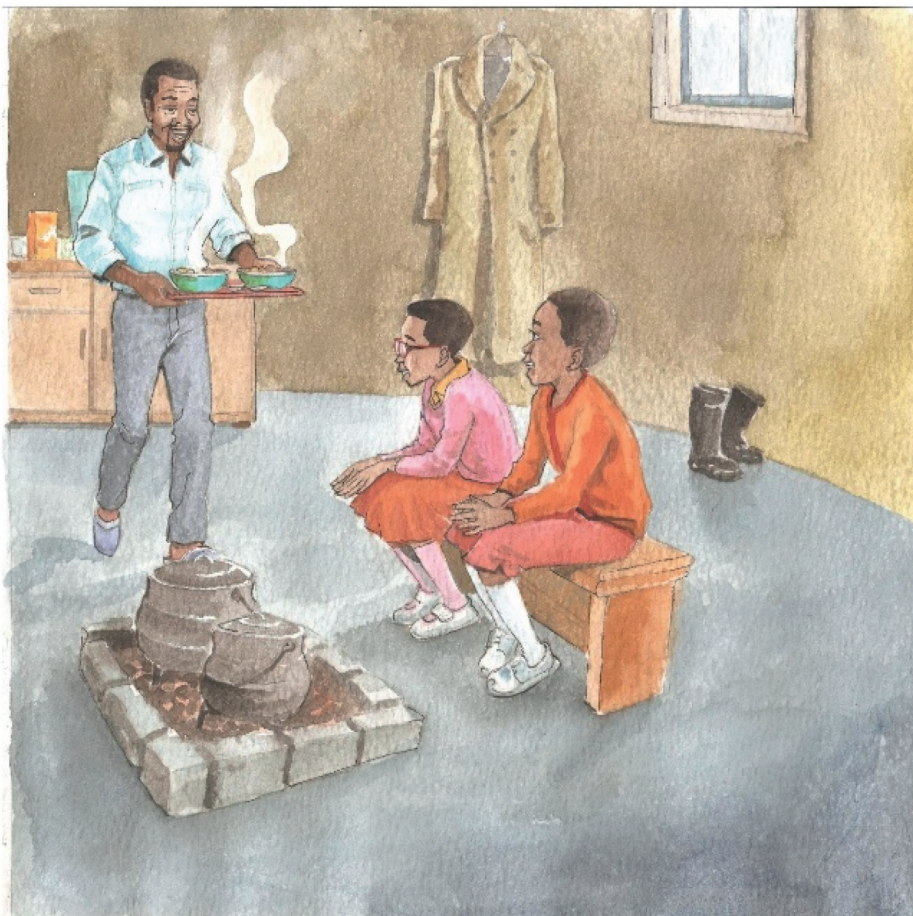


“Ela tlhoko moo o tsamayang teng, fa fatshe go gatsetse mme go a reledisa,” a ba lemosa.

Ba feta setlhophanyana sa dinku tsa boboa di kgobokane gore di thutafale.

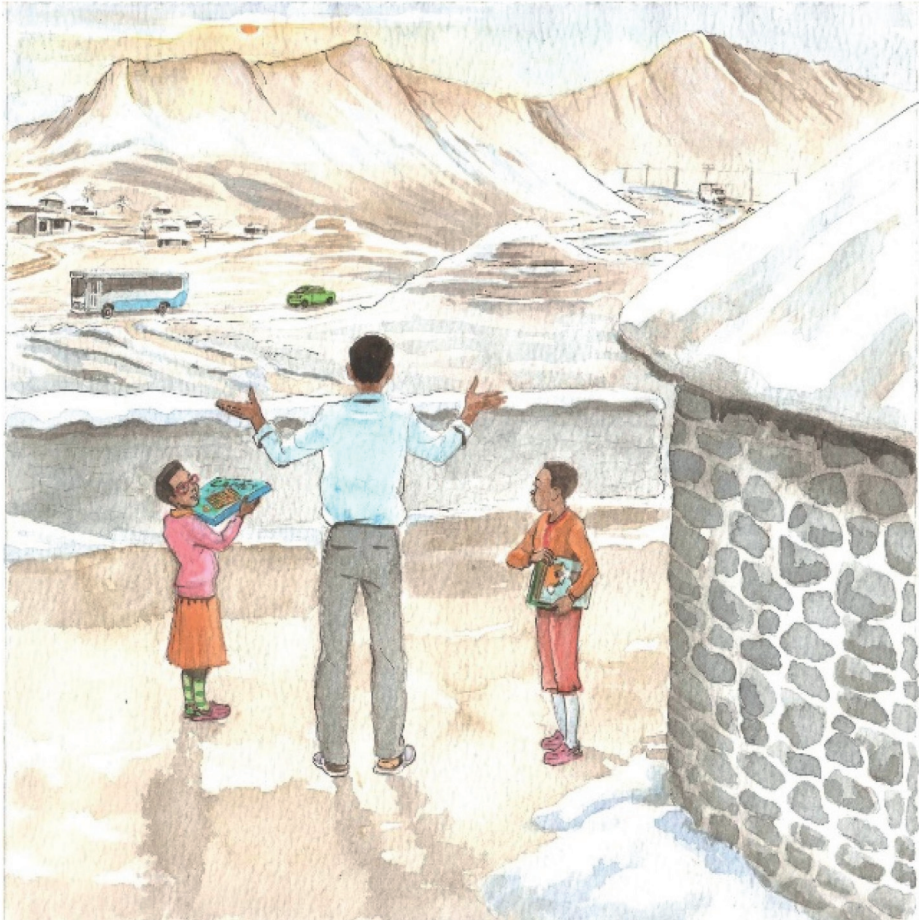


Ka fa tlase ga semathane, majang a omile a masetlha.
Ga go na bojang jo bontsi jo diphologolo di ka bo fulang.
Dijalo tse dintsi di emisa go gola kgotsa di a swa mariga.



Basetsana ba nna fa molelong mo ntlwaneng ya malomeabone.

O ba fa nama ya kgomo le ditapole tse di kuang mosi.
“Lekhotloane le la setso le tlaa le thutafatsa,” a rialo.



“Ka mariga, letsatsi le tlhaba thari, mme le phirima ka pele.
Re tlaa nna diura mo tlung,” Malome a rialo.

Re iketleeditse seo ka dibuka le metshameko!” basetsana
ba buela gongwe.



—Dipotso

1. Lihle le Lwandle ba kwa kae? Batla lefelo leo mo mmepeng.
2. Ke setlha sefe?
3. Batla mafoko a le 3 a a tlhalosang setlha seno.
4. Neela diaparo di le 4 tsa mariga.
5. A mariga a Lesotho a tshwana le mariga a kwa o nnang teng? Tlhalosa.
6. Ke mariga afe a o a ratang thata? Ka goreng?