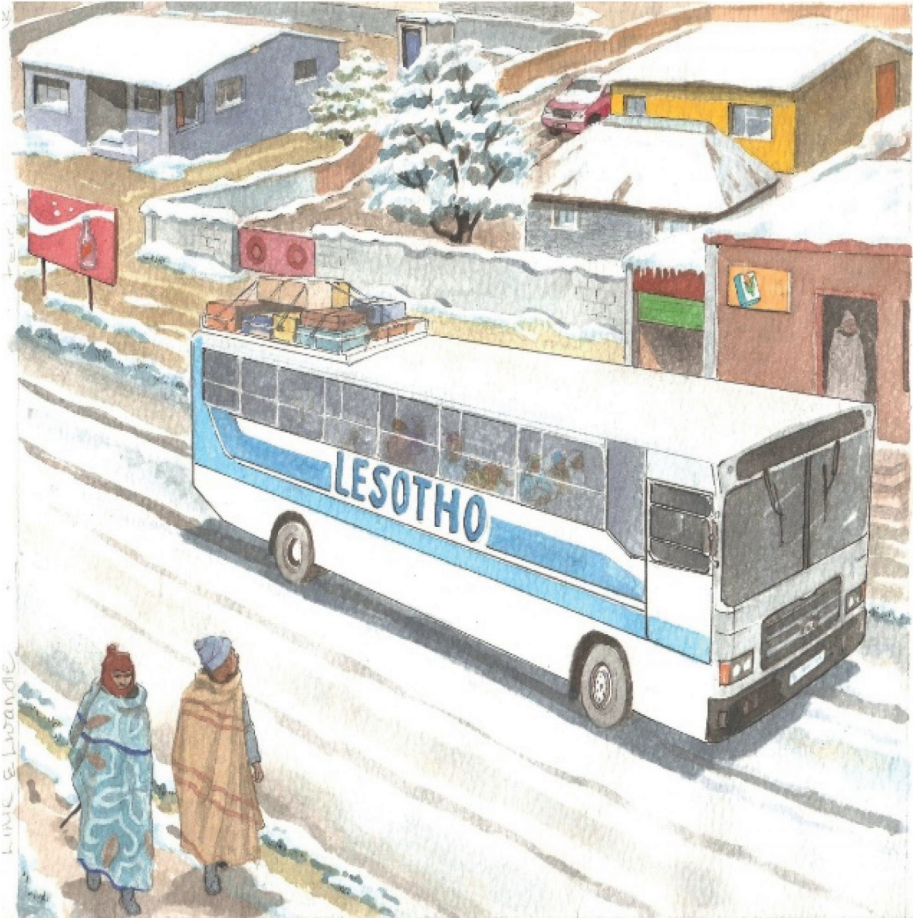




Lihle naLwandle bahamba ngebhasi bayovakashela malume wabo eLesotho.

Lolu luhambo lwabo lwekucala lwekuya eveni lelincane lelisetintsabeni letiphakeme.



Letidzandzane betibuka indzawo letitungeletile njengobe tisebhasini.

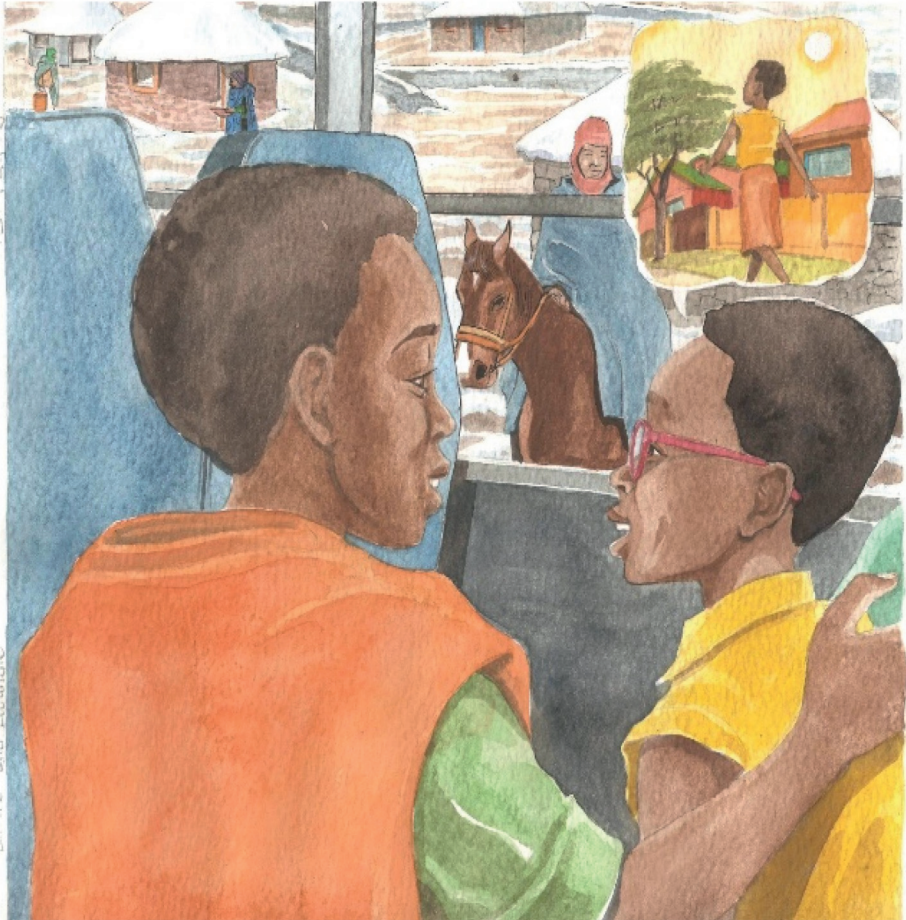
“Kugcwele sitfwatfwa yonkhe indzawo!” kumangala Lwandle.

“Kusengatsi yingubo lemhlophe lembonye yonkhe indzawo,” kuvuma Lihle.



“Ngiyajabula ngobe kufutfumele lapha ngekhatsi ebhasini!”
kuphawula Lwandle.

“Yebo, kumakhata kakhulu ngaphandle. Emazinga ekushisa
alenzawo ehla kakhulu ebusika,” kusho Lihle.



“Emazinga ekushisa alapha eLesotho aphasu kakhulu kunewasekhaya eLimpopo,” kuchubeka Lihle.

“Ha, ngetsemba kutsi ngipakishe timphahla letifutfumele letenele,” kusho Lwandle.



Ibhasi yefika futsi emantfombatane abingelela malume wawo. Malume ugcoke ijazi lelikhulu, sikhafu kanye nesigcoko.

“Yooo!” kuchachatela Lwandle njengobe baphumela ngaphandle kwebhasi.



Emajezi lagcokwe ngemantfombatane alula kakhulu kulamakhata alenzawo.

Malume uphatsele bashana bakhe tingubo letifutfumele.

“Siyanemukela ebusika!” uyababingelela.

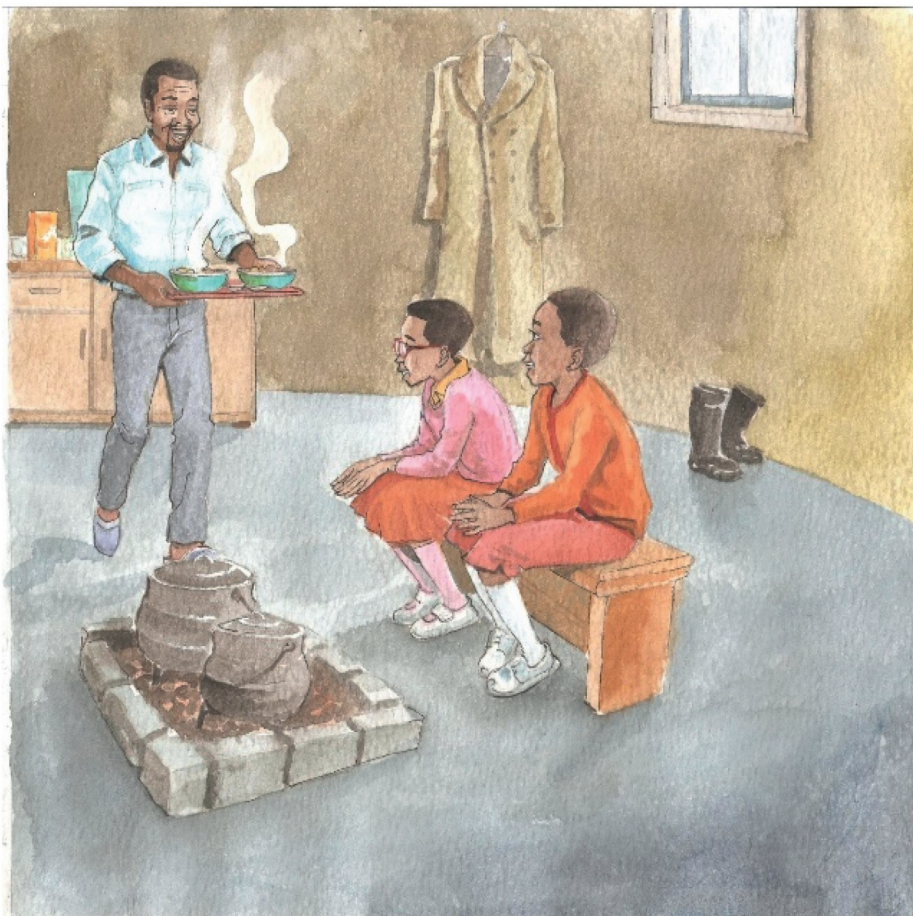


“Caphelani kutsi nihamba kuphi, kunesitfwatfwa lapha phasi futsi kuyashelela,” uyabecwayisa.

Bendlula licembu lelincane letimvu letibutsene ndzawonye kute titigcine tifutfumele.



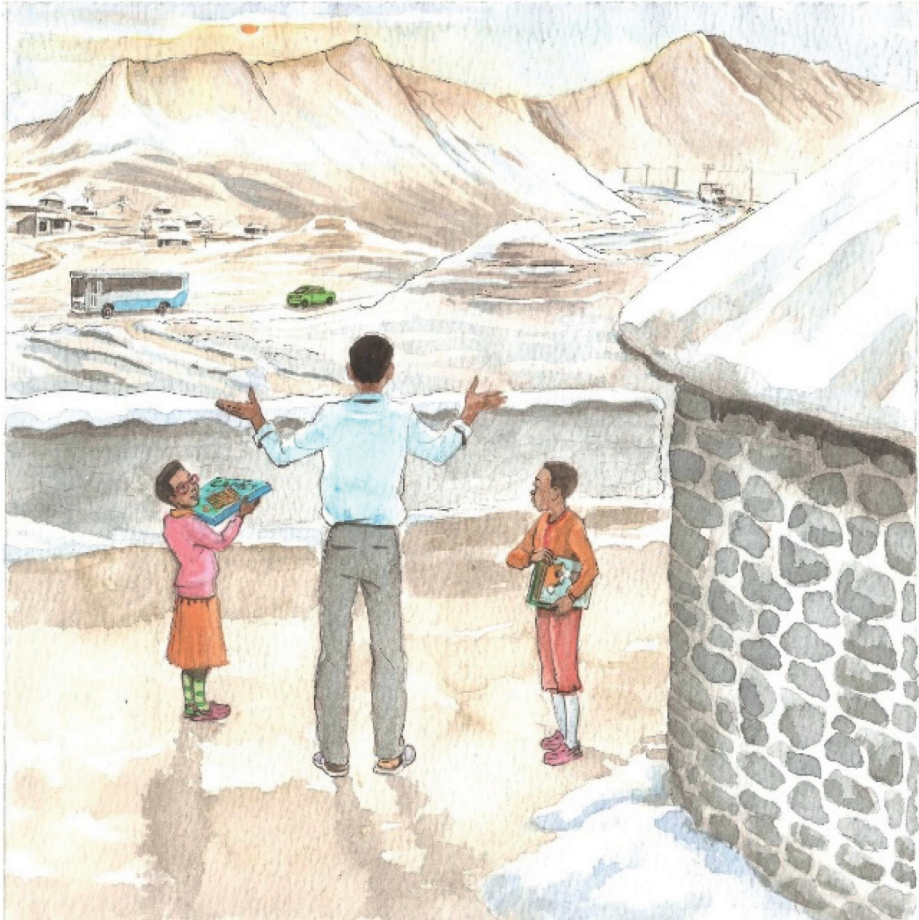
Ngephansi kwalesitfwatfwa, kunetjani lobomile.
Buncane tjani lobungadliwa tilwane.
Titjalo letinyenti tiyayekela kukhula nobe tiyafa ebusika.



Emantfombatane ahlala eceleni kwemlilo endlini yamalume wawo.

Ubaniketa umsombo lohisako wenyama yenkomo nemazambane.

“Nangu umsombo lesitsi yi-lekhotloane utanifutfumeta,” kusho Malume.



“Ebusika, lilanga alisheshi liphume, kepha kuyashesha kuhwalala. Sitawuhlala endlini sikhatsi lesidze,” kusho Malume.

“Site sikulungele, saphatsa tincwadzi netintfo tekudlala!” emantfombatane asho kanye kanye.



—Imibuto

1. Bakuphi boLihle naLwandle? Tfola lendzawo ebalaveni.
2. Ngusiphi sikhatsi semnyaka lesi?
3. Tfola emagama langu-3 lachaza lesikhatsi semnyaka.
4. Bhala timphahla tasebusika letingu-4.
5. Busika baseLesotho buyafana yini nebusika basenzaweni lohlala kuyo? Chaza.
6. Ngubuphi busika lobutsandza kakhulu? Leni?