



Lihle naLwandle ebusika

Ndivhuho Mutsila

Vusi Malindi





Lihle naLwandle bahamba ngebhasi bayovakashela malume wabo eLesotho.

Lolu luhambo lwabo lwekucala lwekuya eveni lelincane lelisetintsabeni letiphakeme.



Letidzandzane betibuka indzawo letitungeletile njengobe tisebhasini.

“Kugcwele sitfwatfwa yonkhe indzawo!” kumangala Lwandle.

“Kusengatsi yingubo lemhlophe lembonye yonkhe indzawo,” kuvuma Lihle.



“Ngiyajabula ngobe kufutfumele lapha
ngekhatsi ebasini!” kuphawula Lwandle.

“Yebo, kumakhata kakhulu ngaphandle.
Emazinga ekushisa alenzawo ehla kakhulu
ebusika,” kusho Lihle.



“Emazinga ekushisa alapha eLesotho aphi kakhulu kunewasekhaya eLimpopo,” kuchubeka Lihle.

“Ha, ngetsemba kutsi ngipakishe timphahla letifutfumele letenele,” kusho Lwandle.



Ibhasi yefika futsi emantfombatane abingelela malume wawo. Malume ugcoke lijazi lelikhulu, sikhafu kanye nesigcoko.

“Yooo!” kuchachatela Lwandle njengobe baphumela ngaphandle kwebhasi.



Emajezi lagcokwe ngemantfombatane alula kakhulu kulamakhata alenzawo.

Malume uphatsele bashana bakhe tingubo letifutfumele.

“Siyanemukela ebusika!” uyababingelela.



“Caphelani kutsi nihamba kuphi, kunesitfwatfwa lapha phasi futsi kuyashelela,” uyabecwayisa.

Bendlula licembu lelincane letimvu letibutsene ndzawonye kute titigcine tifutfumele.



Ngephansi kwalesitfwatfwa, kunetjani lobomile.

Buncane tjani lobungadliwa tilwane.

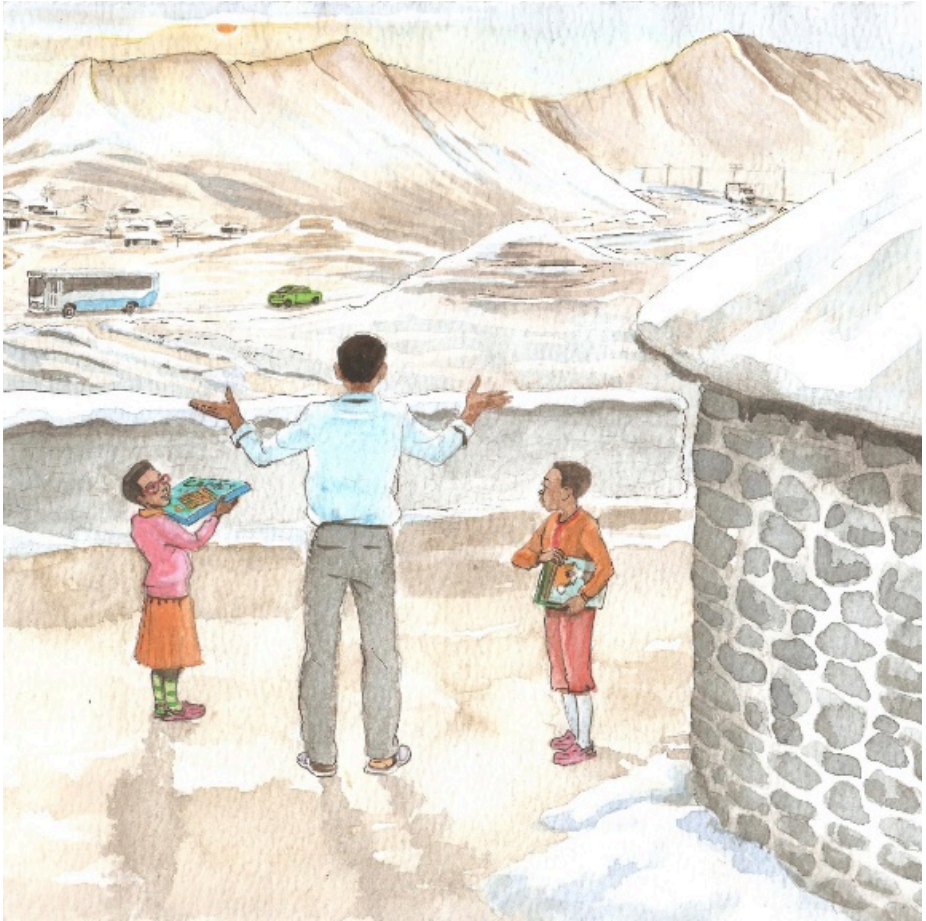
Titjalo letinyenti tiyayekela kukhula nobe tiyafa ebusika.



Emantfombatane ahlala eceleni kwemlilo endlini yamalume wawo.

Ubaniketa umsombo lohisako wenyama yenkomo nemazambane.

“Nangu umsombo lesitsi yi-lekhotloane utanifutfumeta,” kusho Malume.



“Ebusika, lilanga alisheshi liphume, kepha kuyashesha kuhwalala. Sitawuhlala endlini sikhatsi lesidze,” kusho Malume.

“Site sikulungele, saphatsa tincwadzi netintfo tekudlala!” emantfombatane asho kanye kanye.

—Imibuto

1. Bakuphi boLihle naLwandle? Tfolalenzawo ebalaveni.
2. Ngusiphi sikhatsi semnyaka lesi?
3. Tfola emagama langu-3 lachaza lesikhatsi semnyaka.
4. Bhala timphahla tasebusika letingu-4.
5. Busika baseLesotho buyafana yini nebusika basendzaweni lohlala kuyo? Chaza.
6. Ngubuphi busika lobutsandza kakhulu? Leni?



Ulwazi Lwethu is a Zenex Foundation funded and initiated project to develop a series of graded and leisure African language readers and teacher support materials. This project is targeted at teaching and supporting learners in the Foundation Phase to improve their home language reading and understanding. The readers have been originated in nine African languages in collaboration with Molteno Institute for Language and Literacies, Nelson Mandela Institute for Education and Rural Development, Room to Read South Africa, and Saide. All resources are developed as Open Education Resources (OER).



Your attribution should include the following:

Title: Lihle naLwandle ebusika

Author/s: Ndivhuho Mutsila

Translator/s: Simangele Khoza

Illustrator/s: Vusi Malindi

Assurer/s: Mduduzi Benjie Shongwe

Language: Siswati



© Zenex Foundation - Saide 2023

CC BY includes the following elements:

BY  - Credit must be given to the creator

