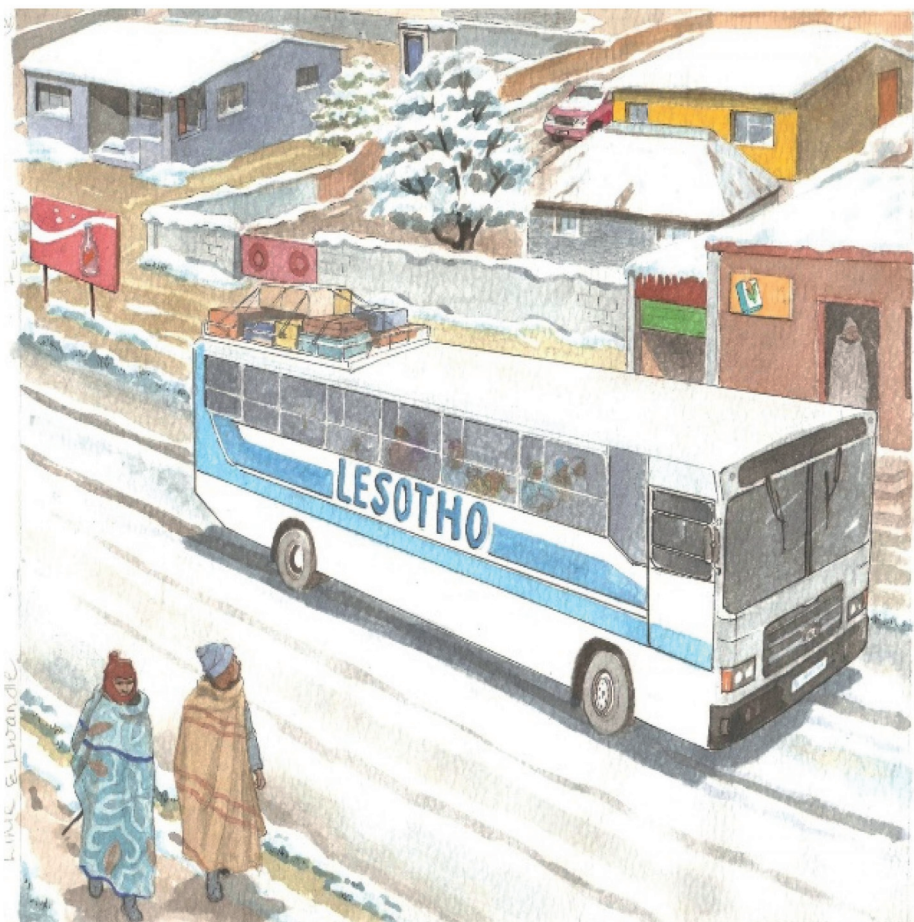




Lihle na Lwandle vafamba hi bazi ku endzela malume wa vona eLesotho.

I riendo ra vona ro sungula eka tiko leritsongo ra tintshava letikulu.



Vanhwana vadyondza tindhawu loko va ri ebazini.

“Ku na gamboko hinkwako!” ku hlamala Lwandle.

“Yi fana na nkumba wo basa lowu funengeteke hinkwaswo,”  
ku pfumela Lihle.



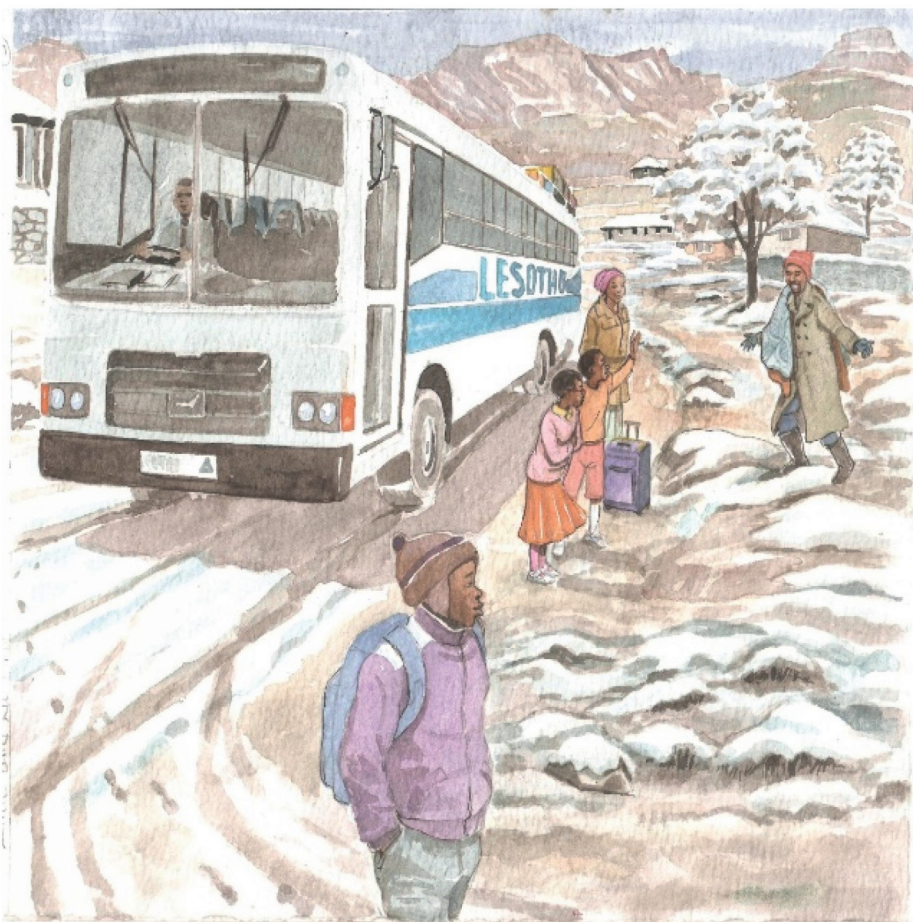
“Ndzi tsakile hikuva bazi kokwanara kufumela endzeni!” ku boxa Lwandle.

“Ina, ku ta titimela ehandle. Maxelo ya xixika ya ehla ku ya ehansi ka gwitsi,” ku vula Lihle.



“Maxelo ya xixika eLesotho ya titimela swinene ku tlula ekaya eLimpopo,” Lihle a ya emahlweni.

“Brrr, ndza tshembha ndzi pakile swiambalo swo kufumela,” ku vula Lwandle.



Bazi ra fika naswona vanhwana va tatayisela malume wa vona. U ambarile baji lerikulu, xikafu, na xihuku.

“Ee-ee!” ku rhurhumela Lwandle loko a ri karhi a huma.



Majesi ya vanhwana ya vevuka eka maxelo ya laha.

Malume u tile na mikumba yo kufumela eka vantukulu va vona.

“Ha ku amukela xixika!” a xeweta.



“Xiyaxiya laha u fambaka kona, ehansi kuna gwitsi naswona ka rheta,” a lemukisa.

Vahundza ntlawa wu tsongo wa tinyimpfu ta wulu leti nga ndhawu yin’we leswaku ti ta kufumela.

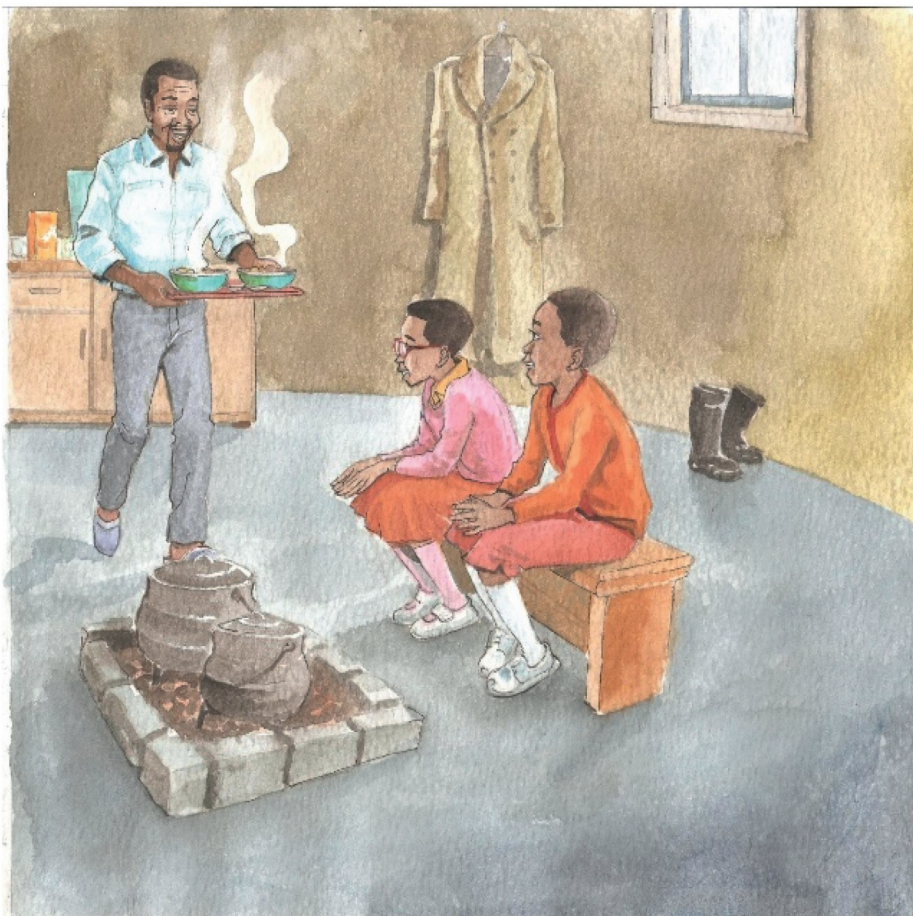


Ehansi ka gamboko, byanyi byi omile naswona i bya Ribungu.

A ku ri hava byanyi eka swifuwo ku va swi nga dya.

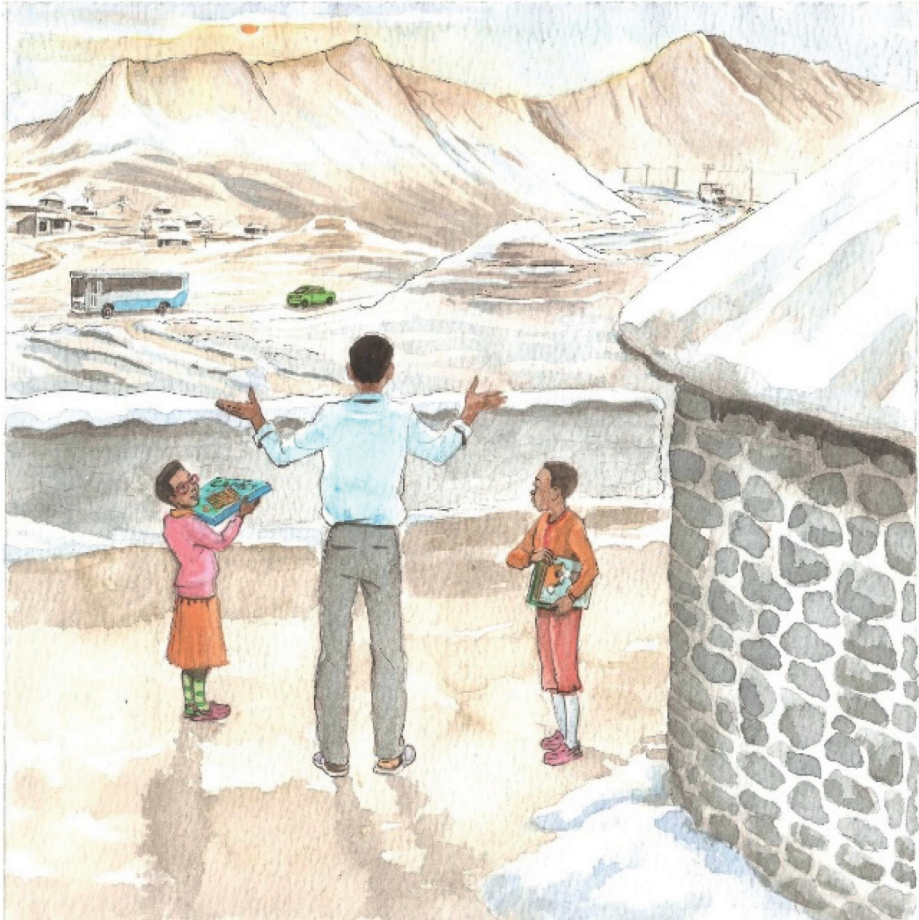
Swimilani swotala swi yima ku kula na ku fa hi xixika.





Vanhwana vatshama na malume wa vona eka yindlu ya mabyanyi.

U va nyika nyama ya homu na mazambhala leswi hisaka.  
“Mokhotloane wu ta mi kufumeta,” a vula.



“Hi xixika, dyambu ri teka nkarhi ku huma, naswona ri pela hi xihatla. Hi ta va hi ri endlwini tiawara to tala,” ku vula Malume.

“Hi lulamisile tibuku na mitlangu!” ku vula vanhwanyana.



## —Swivutiso

1. Xana Lihle na Lwandle vakwihi? Kuma ndhawu eka mepe.
2. Xana i nguva yihi?
3. Kuma marito manharhu ku hlamusela nguva.
4. Longoloxa 4 wa swiambalo swa xixika.
5. Xana xixika xa Lesotho xa fana na laha u nga kona? Hlamusela.
6. Hixihi xixika lexi u nga xirhandziki? Hikwalaho ka yini?