



# ULihle noLwandle ngesiruthwana

Sara Mohale  
Busisiwe Ndlovu





ULihle noLwandle bavakatjhela eplasini  
likagogwakhe eliseVhembe.

Leli livakatjho labo lokuthoma.

Bathi nabavukako bezwa amatjhada  
abangakawajayeli ngaphandle kwefesidere.

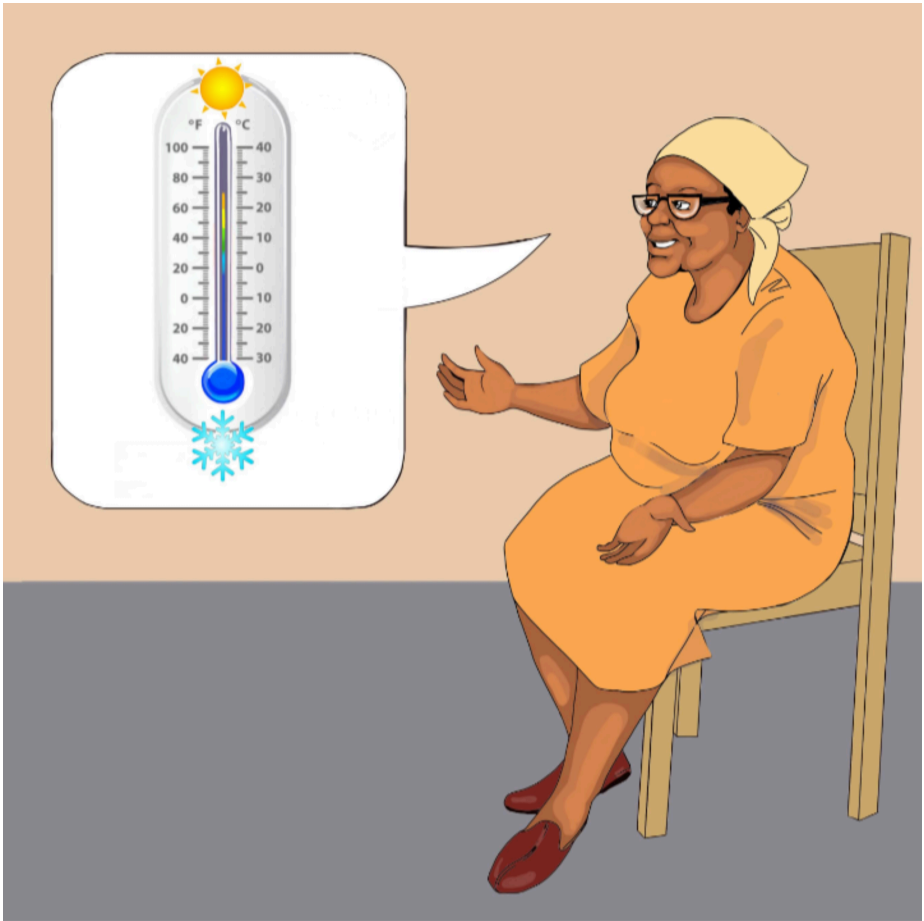


“Lotjhani gogo,” kulotjhisa abantazanyana.  
“Ngelani itjhadelo?”

“Lotjhani! Loyo mkukurumbu, uyasivusa bona senze umsebenzi weplasini,” kuhleka ugogo.



“Kusese mnyama ngaphandle, kodwana kulada kunangendlela eniqabanga ngayo. Ngesikhathi sesiruthwana, ilanga liphuma lada begodu litjhinga msinya sekunehlobo,” kutjho ugogo.



Ugogo uyaraga, “Ngesikhathi sesiruthwana, ubujamo bezulu buyaphola. Kodwana kusafuthumele kunebusika.”

“Asizithogi izambatho zebusika nje,” kuvuma uLwandle.



“Ngesikhathi sesiruthwana, uzokubona iintjalo ezinengi zitjhuguluka umbala begodu zithoma ukoma. Asikaqedi ukuvuna iintjalo zethu,” kutjho ugoto.



“Ngesikhathi sesiruthwana kileli iplasi, sivuna amabhontjisi, ikhabitjhi, ikholiflawwa, kanye nesipinatjhi,” kuhlathulula ugogo.

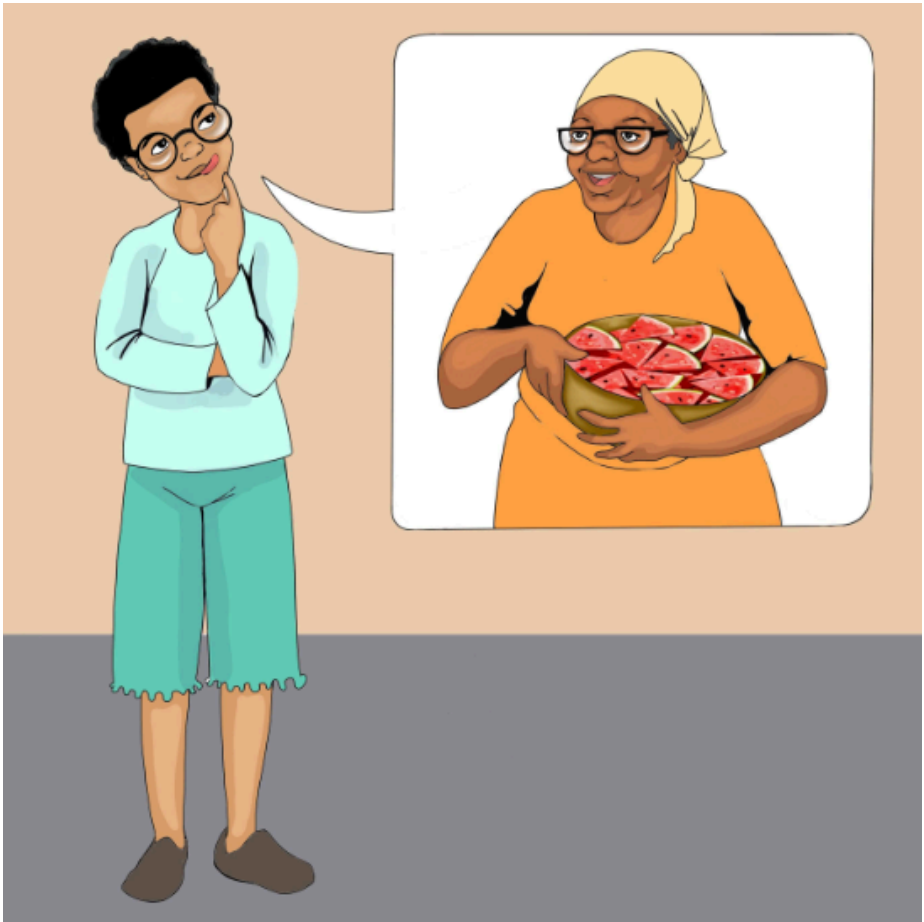
Uyangezelela, “Namhlanje ebusuku, esidlweni santambana sizokudla imirrorho efretjhi evela eplasinaapha.”



“Kunokuthi sihlale sithenga imirrorho njalo, singathanda ukutjala eminye ekhaya edrobheni,” kutjho uLihle.

“Mbono omuhle loyo! Ngizanifundisa,” kuthembisa ugogo.





ULwandle uyabuza “Gogo, uyazitjela iinthelo? Ikhabe sithelo engisithandako!”

UGogo uyahleka, “Sisandukuvuna isivuno esikhulu samakhabe asudu!”



“Ngesikhathi sesiruthwana, ifuyo ezelwe namkha ephandluselwe etwasahlobo sele ikhulile, begodu sithengisa enye yayo.

Ifuyo yethu isipha ibisi, amaqanda nenyama,”  
kutjho ugogo ngokuzikhakhazisa.



“Siba namaqanda afretjhi wesidlo sekuseni, bese siyokusebenza esivandeni semirrorho,” kumomotheka uGogo.

ULihle noLwandle bathabile ngokuyokusebenza noGogo esivandeni!

## —Imibuzo

1. Ngesikhathi sesiruthwana ngimaphi amatjhuguluko enzekako:
2. eentjalweni?
3. emazingeni wokutjhisa?
4. ekuphumeni nekutjhingeni kwelanga?
5. Efuyweni?
6. Kwenzakalani eplasini kaGogo kilesi isikhathi somnyaka?
7. Ingabe isikhathi sesiruthwana esisendatjaneni siyafana namkha sihlukile nalesi isikhathi lapho uhlala khona? Hlathulula.
8. Ngiwaphi amakghonofundwa abantazanyana abangawafunda kuGogo?



Ulwazi Lwethu is a Zenex Foundation funded and initiated project to develop a series of graded and leisure African language readers and teacher support materials. This project is targeted at teaching and supporting learners in the Foundation Phase to improve their home language reading and understanding. The readers have been originated in nine African languages in collaboration with Molteno Institute for Language and Literacies, Nelson Mandela Institute for Education and Rural Development, Room to Read South Africa, and Saide. All resources are developed as Open Education Resources (OER).



Your attribution should include the following:

Title: ULihle noLwandle ngesiruthwana

Author/s: Sara Mohale

Translator/s: Vusi Mahlangu

Illustrator/s: Busisiwe Ndlovu

Assurer/s: Sponono Mahlangu

Language: All languages



© Zenex Foundation - Saide 2023

CC BY includes the following elements:

BY  - Credit must be given to the creator

