



# ULihle noLwandle bafunda ngekwindla

Sara Mohale  
Busisiwe Ndlovu





ULihle noLwandle bavakashela ipulazi likagogo wabo eVhembe.

Bayaqala ngqa ukuvakasha.

Bavuka bezwa imisindo engajwayelekile ngaphandle kwefasitela labo.

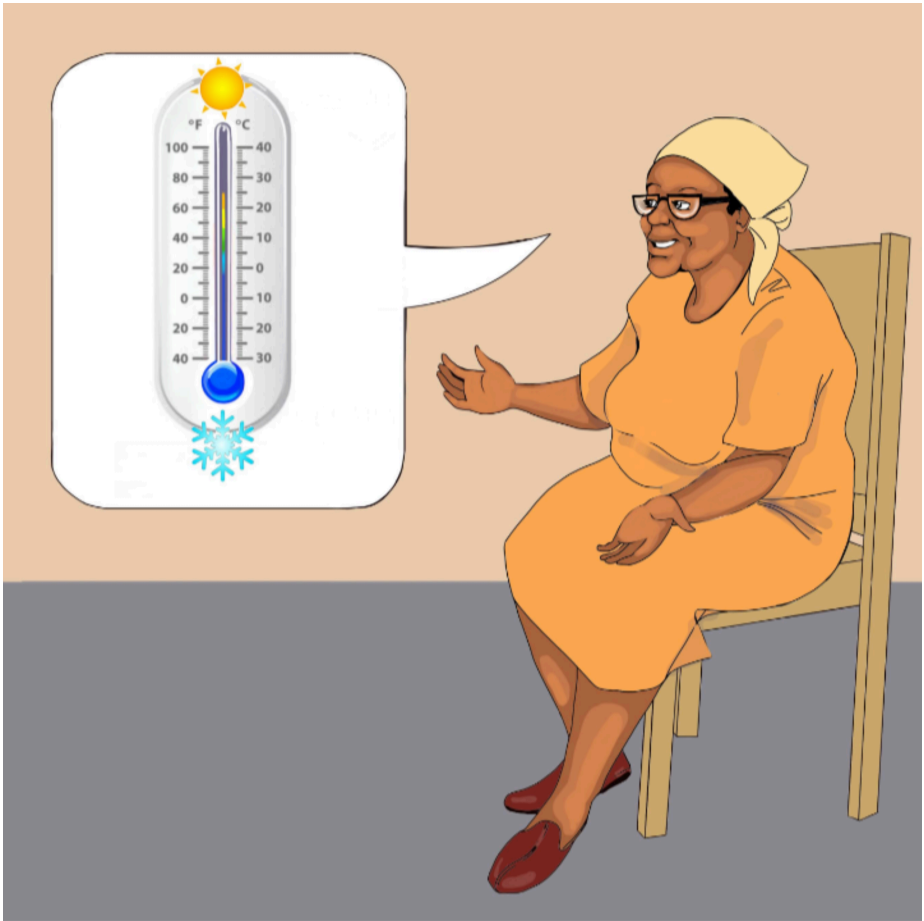


“Sawubona gogo,” kubingelela amantombazane. “Owani lowo msindo?”

“Sanibonani!” Oweqhude, liyasivusa ukuze senze imisebenzi yasepulazini,” kuhleka ugogo.



“Kusemnyama ngaphandle, kodwa isikhathi sesihambile kunalokhu enikucabangayo. Ekwindla, ilanga liyephuza ukuphuma bese liyashesha ukushona kunasehlobo.” kusho ugogo.



Ugogo uyaqhubeka, “Ekwindla, isimo sezulu siyaphola. Kodwa kusuke kusafudumele kunasebusika.”

“Asikazidingi izimpahla zethu zasebusika,” kuvuma uLwandle.



“Ekwindla, ubona izitshalo eziningi zishintsha umbala bese ziqala ukubona. Sesizoqeda ukuvuna izitshalo zethu,” kusho ugogo.



“Kuleli pulazi ngesikhathi sekwindla, sivuna ubhontshisi, iklabishi, ikholifulawa nesipinashi.” kuchaza ugogo.

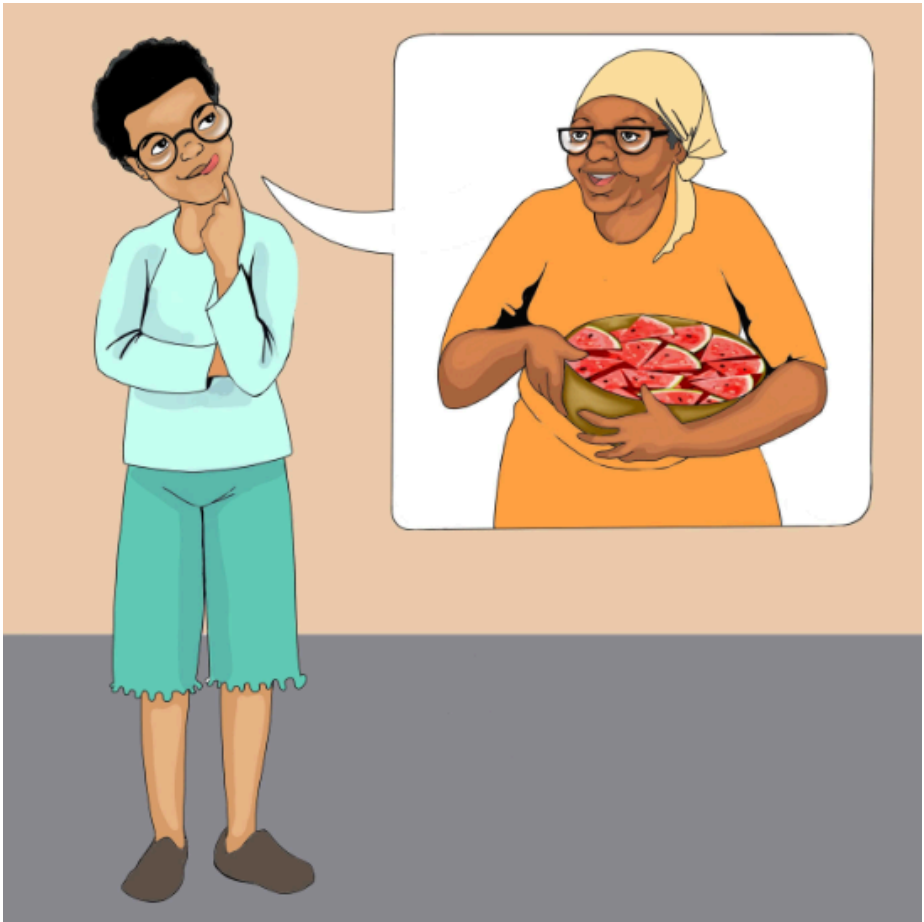
Uyenezela, “Ebusuku sizodla imifino emisha sha yasepulazini ngesidlo sethu sakusihlwa.”



“Kunokuba sihlale sithenga imifino, singathanda ukuzitshalela nathi ekhaya edolobheni,” kusho uLihle.

“Ngumbono omuhle lowo! Ngizonifundisa,” kuthembisa ugogo.





ULwandle uyabuza, “Gogo, ngabe uyazilima izithelo? Isithelo engisithanda kakhulu kunazo zonke yikhabe!”

Ugogo uyahleka, “Sisanda kuvuna isivuno esikhulu samakhabe amnandi.”



“Ngesikhathi sekwindla, izilwane ezizelwe noma ezichanyiselwe entwasahlobo sezikhulile, futhi ezinye siyazidayisa.

Izilwane zethu zisinika ubisi, amaqanda nenyama,” kusho ugogo ngokuziqhenya.



“Sizodla amaqanda amasha ngesidlo sasekuseni, bese sisebenza engadini yemifino,” kumoyizela ugogo.

ULihle noLwandle bayakujabulela ukusebenza engadini nogogo!

## —Imibuzo

1. Ekwindla, yiluphi ushintsho olwenzekayo:
  - ezitshalweni?
  - emazingeni okushisa?
  - ekuphumeni nasekushoneni kwelanga?
  - ezilwaneni?
2. Kwenzekani epulazini likagogo kulesi sikhathi sonyaka?
3. Ingabe ikwindla elikule ndatshana liyafananoma lihlukile kunalelo lalapho uhlala khona? Chaza.
4. Yimaphi amakhono angafundwa amantombazane kugogo?



Ulwazi Lwethu is a Zenex Foundation funded and initiated project to develop a series of graded and leisure African language readers and teacher support materials. This project is targeted at teaching and supporting learners in the Foundation Phase to improve their home language reading and understanding. The readers have been originated in nine African languages in collaboration with Molteno Institute for Language and Literacies, Nelson Mandela Institute for Education and Rural Development, Room to Read South Africa, and Saide. All resources are developed as Open Education Resources (OER).



Your attribution should include the following:

Title: ULihle noLwandle bafunda ngekwindla

Author/s: Sara Mohale

Translator/s: Zanele Ndlovu

Illustrator/s: Busisiwe Ndlovu


Assurer/s: Sifiso Khoza

Language: All languages



© Zenex Foundation - Saide 2023

CC BY includes the following elements:

BY  - Credit must be given to the creator

