



Lihle le Lwandle ka lethabula

Sara Mohale

Busisiwe Ndlovu





Lihle le Lwandle ba etetse polase ya ga
kokoabona kwa Vhembe.

Ke leeto la bona la ntlha.

Ba tsoga ka go utlwa medumo e e sa
tlwaelegang kwa ntle ga letlhabaphefo!

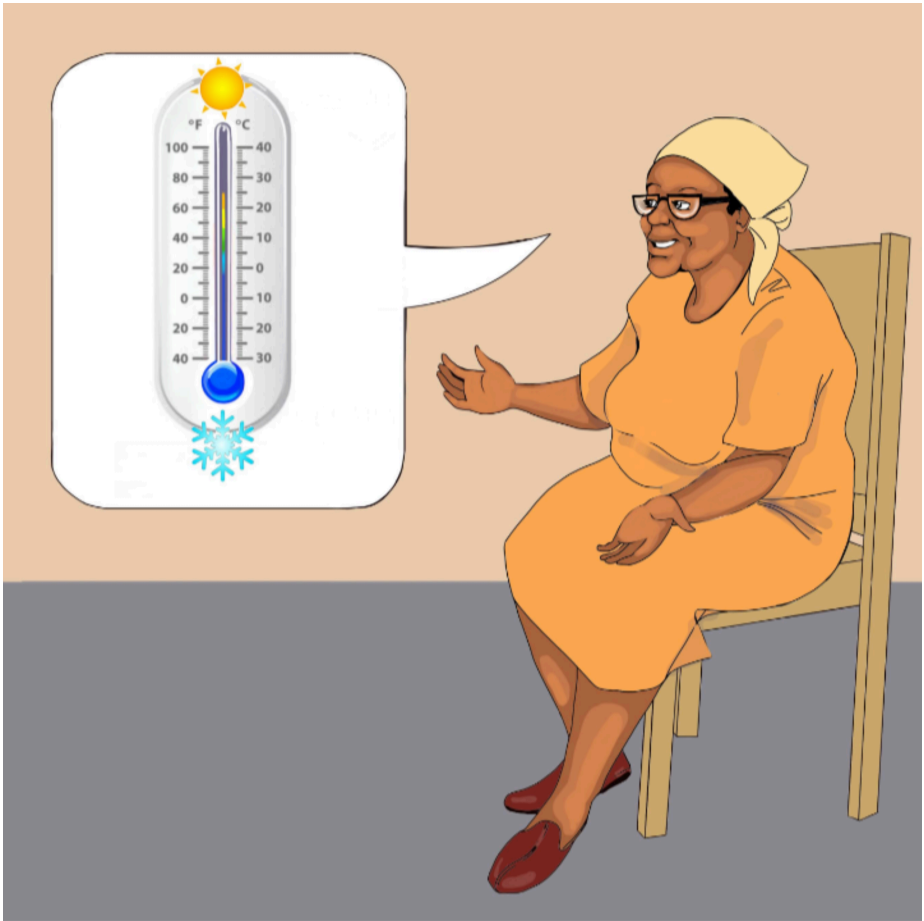


“Dumela, Koko,” ga dumedisa basetsana. “Ke modumo wa eng oo?”

“Dumelang! Ke mokoko, o re tsosa gore re dire ditiro tsa mo polaseng,” Koko a tshega.



“Go sa ntse go le lefifi kwa ntle, mme ga go moso thata jaaka le akanya. Ka letlhabula, letsatsi le tlhaba moragonyana le phirime ka pejana go feta ka selemo,” ga rialo Koko.



Koko o a tswelela, “Ka letlhabula, maemo a bosa a nna tsiditsana. Mme go sa ntse go le bothitonyana go feta mariga.”

“Ga re ise re tlhoke diaparo tsa mariga,” ga dumela Lwandle.



“Ka letlhabula, lo tlaa bona bontsi jwa dijalo di fetola mmala le go simolola go omelela. Re gaufi le go fetsa go kotula dijalo tsa rona,” ga rialo Koko.



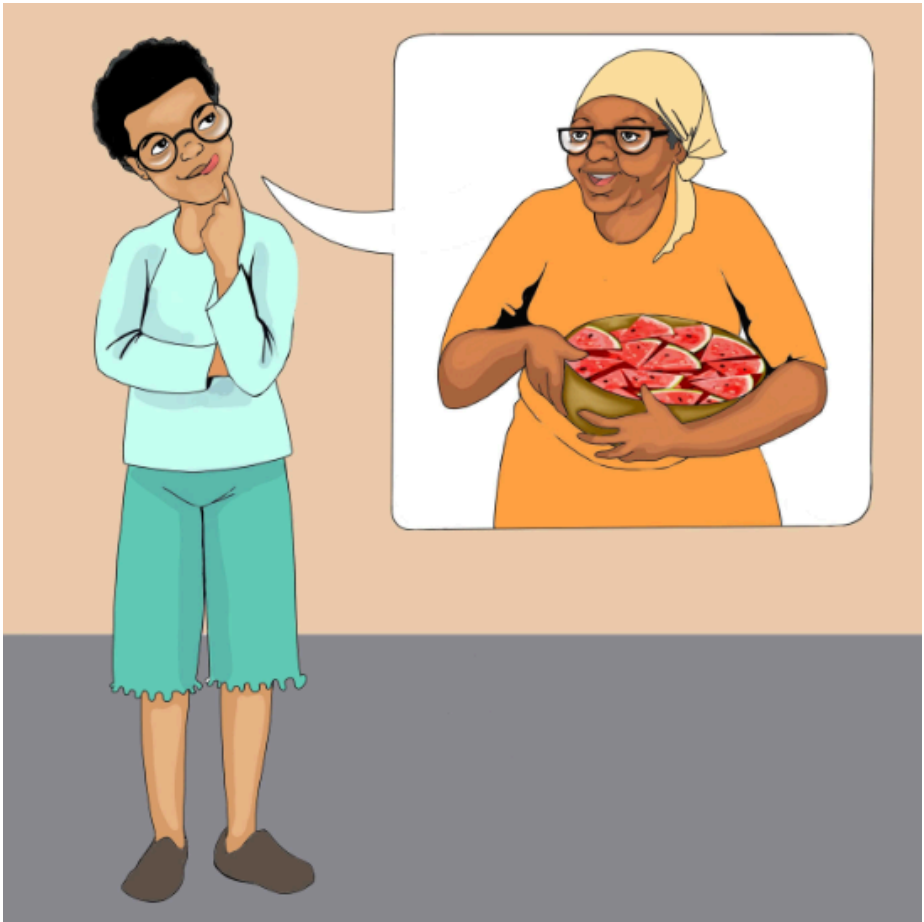
“Mo polaseng eno ka letlhabula, re kotula dinawa, khabetšhe, kholifolawa, le sepinatšhe,” ga tlhalosa Koko.

A oketsa, “Maitseboa, re tlaa ja dilalelo tsa merogo e metala ya polasa.”



“Boemong jwa go reka merogo ka gale, re ka itemela e se kae fa gae kwa toropong,” ga rialo Lihle.

“Ke kakanyo e ntle! Ke tlaa le ruta,” Koko a solofetsa.



Lwandle a botsa, “Koko, a o lema maungo?
Legapu ke leungo le ke le ratang!”

Koko a tshega, “Re sa tswa go kotula dijalo tse
dintsi tsa magapu a botshe!”



“Ka lethabula, diphologolo tse di tsetsweng kgotsa tse di thuthusitsweng ka dikgakologo di godile, mme re rekisa dingwe.

Diphologolo tsa rona di re fa maši, mae, le nama,” ga bua Koko ka boipelo.



“Re tlaa ja mae a mašwa ka dijo tsa mo mosong,
mme re dire mo tshingwaneng ya merogo,”
Koko a nyenya.

Lihle le Lwandle ba itumeletse go dira mo
tshingwaneng le Koko!

—Dipotso

1. Ka letlhabula, ke diphetogo dife tse di diregang mo:
 - dijalong?
 - dithempereitšheng?
 - tlhabong le phirimo ya letsatsi?
 - diphologolong?
2. Go diragalang mo polaseng ya ga Koko mo setlheng seno?
3. A letlhabula le le mo kganng le tshwana kgotsa le farologane le la kwa o nnang teng? Tlhalosa.
4. Ke bokgoni bofe jo basetsana ba ka bo ithutang mo go Koko?



Ulwazi Lwethu is a Zenex Foundation funded and initiated project to develop a series of graded and leisure African language readers and teacher support materials. This project is targeted at teaching and supporting learners in the Foundation Phase to improve their home language reading and understanding. The readers have been originated in nine African languages in collaboration with Molteno Institute for Language and Literacies, Nelson Mandela Institute for Education and Rural Development, Room to Read South Africa, and Saide. All resources are developed as Open Education Resources (OER).



NELSON MANDELA
INSTITUTE FOR
EDUCATION AND
RURAL DEVELOPMENT



Room to Read®
World Change Starts with Educated Children®

Your attribution should include the following:

Title: Lihle le Lwandle ka letlhabala

Author/s: Sara Mohale

Translator/s: Opelo Thole

Illustrator/s: Busisiwe Ndlovu


Assurer/s: Dineo Moatshe

Language: All languages



© Zenex Foundation - Saide 2023

CC BY includes the following elements:

BY  - Credit must be given to the creator

