



Lihle naLwandle ekwindla

Sara Mohale

Busisiwe Ndlovu





Lihle naLwandle bavakashele gogo wabo
losepulazini laseVhembe.

Bayacala kumvakashela.

Bavuswa ngumsindvo labangawati ngaphandle
kwelifasitelo labo!

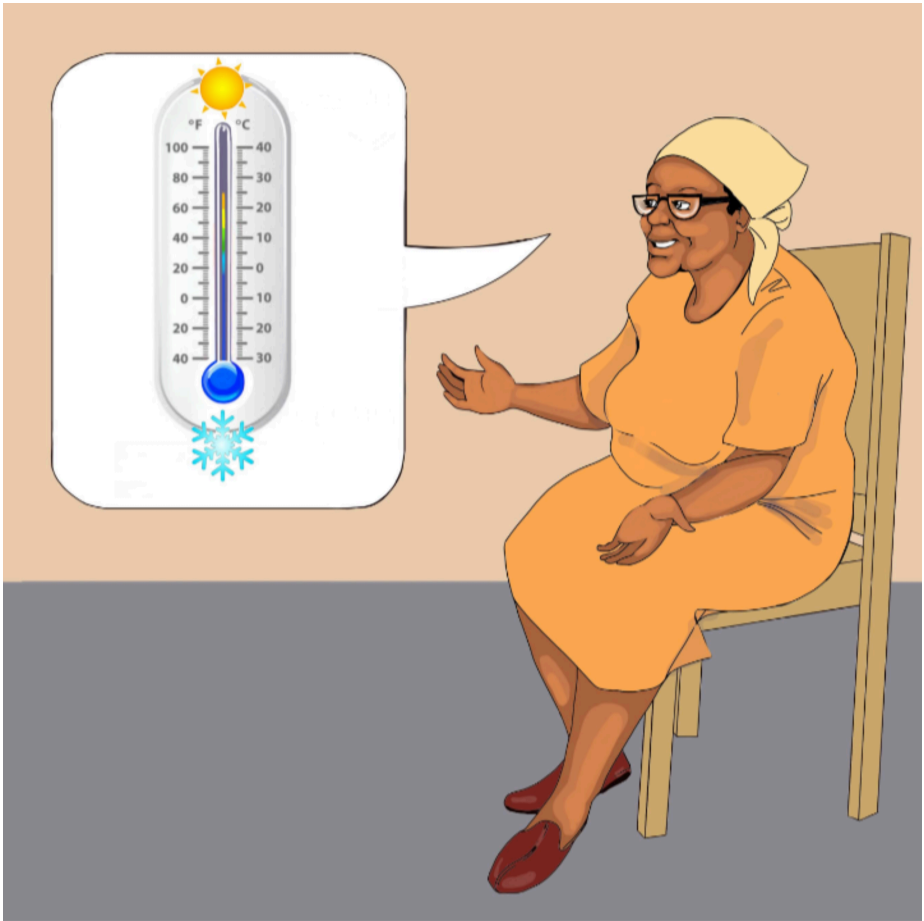


“Sawubona Gogo,” kubingelela emantfombatane. “Wani lomsindvo?”

“Sanibonani! Lona ngumsindvo welichudze, liyasivusa kute sente imisebenti yasepulazini,” kuhleka Gogo.



“Kusesemnyama ngaphandle, kepha sikhatsi sesihambile kunaloko lenikubonako. Ekwindla, lilanga alisheshi kuphuma kepha liyashesha kushona kunasehlobo,” kusho Gogo.



Gogo uyachubeka, “Ekwindla, kuyaphola. Kepha kufutfumele kunasebusika.”

“Asitidzingi timphahla tetfu tasebusika kwanyalo,” kuvuma Lwandle.



“Ekwindla, utawubona titjalo tiba nembala lowehlukile bese ticala tiyoma. Sesiyacedza kuvuna tilimo tetfu,” kusho Gogo.



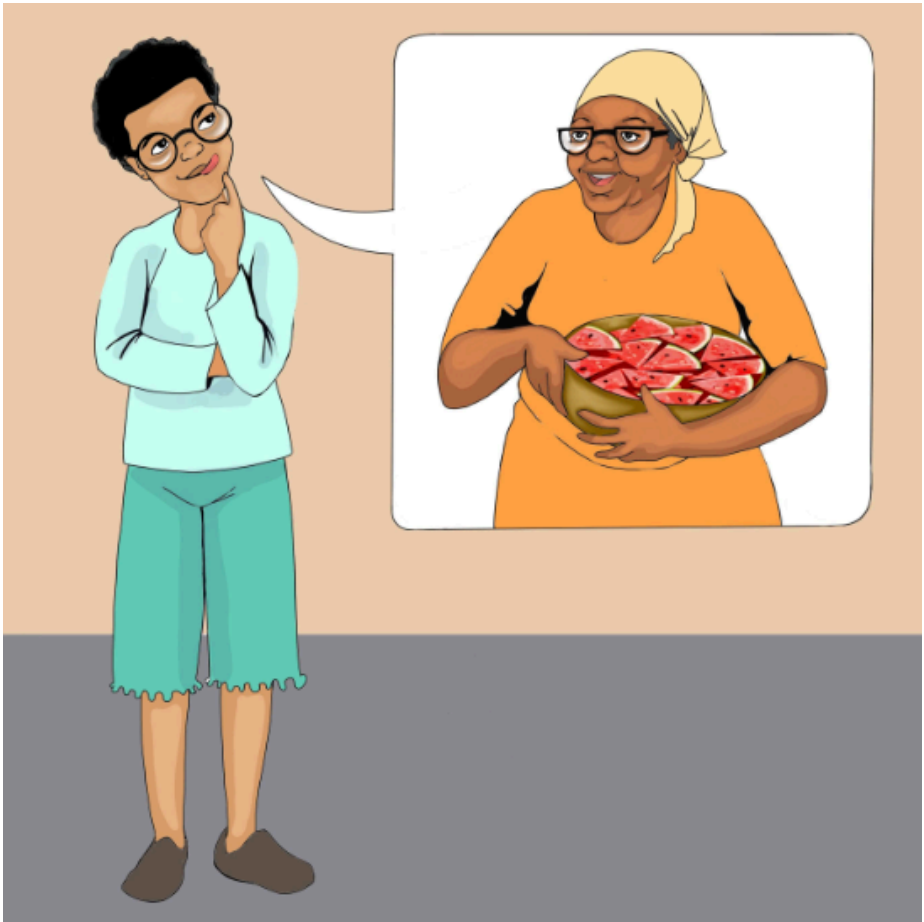
“Ekwindla, lapha epulazini sivuna emabhontjisi, emakhabishi, ikholifulawa kanye nesipinashi,” kuchaza Gogo.

Uyengeta, “Lamuhla ekudleni kwakusihlwa, sitodla netibhidvo letimnandzi letilinywe lapha epulazini.”



“Kunekuhlale sitsenga tibhidvo, natsi singakujabulela kutitjala ekhaya kitsi lelisedolobheni,” kusho Lihle.

“Yintfo lenhle leyo! Ngitonifundzisa,” kwetsembisa Gogo.



Lwandle uyabuta, “Gogo, uyatitjala yini titselo? Mine ngitsandza luhwabha!”

Gogo uyahleka, “Sisandza kuvuna sivuno lesikhulu setihwabha letimnandzi!”



“Ekwindla, timfuyo letitalwe nobe letichamisele entfwasahlobo tisuke setikhulile, sibese sitsengisa letinye tato.

Timfuyo tetfu tisiniketa lubisi, emacandza kanye nenyama,” kusho Gogo ngekutigcabha.



“Ekuseni sitakudla emacandza lamnandzi, ngemuva kwaloko sitawubese sisebenta engadzeni,” kumoyitela Gogo.

Lihle naLwandle bajubule kakhulu kutsi batawusebenta naGogo engadzeni!

—Imibuto

1. Ekwindla, nguluphi lushintjo lolwenteka:
 - etitjalweni?
 - emazingeni ekushisa?
 - ekuphumeni nasekushoneni kwelilanga?
 - etilwaneni?
2. Yini leyentekako epulazini laGogo kulesikhatsi semnyaka?
3. Ikwindla lokukhulunywa ngayo kule ndzaba iyafana yini nobe yehlukile kuleyo lebakhona endzaweni lohlala kuyo? Chaza.
4. Emantfombatane angafundza liphi likhono kuGogo?



Ulwazi Lwethu is a Zenex Foundation funded and initiated project to develop a series of graded and leisure African language readers and teacher support materials. This project is targeted at teaching and supporting learners in the Foundation Phase to improve their home language reading and understanding. The readers have been originated in nine African languages in collaboration with Molteno Institute for Language and Literacies, Nelson Mandela Institute for Education and Rural Development, Room to Read South Africa, and Saide. All resources are developed as Open Education Resources (OER).



NELSON MANDELA
INSTITUTE FOR
EDUCATION AND
RURAL DEVELOPMENT



Room to Read®
World Change Starts with Educated Children®

Your attribution should include the following:

Title: Lihle naLwandle ekwindla

Author/s: Sara Mohale

Translator/s: Simangele Khoza

Illustrator/s: Busisiwe Ndlovu

Assurer/s: Mduduzi Benjie Shongwe

Language: Siswati



© Zenex Foundation - Saide 2023

CC BY includes the following elements:

BY  - Credit must be given to the creator

