



Lihle na Lwandle vha guda nga luṭavula

Sara Mohale
Busisiwe Ndlovu





Lihle na Lwandle vho dalela bulasi la makhulu
ngei Vhembe.

Vho dala lwa u tou thoma.

Vho vuswa nga phosho i songo dowealeho
fasitereni!

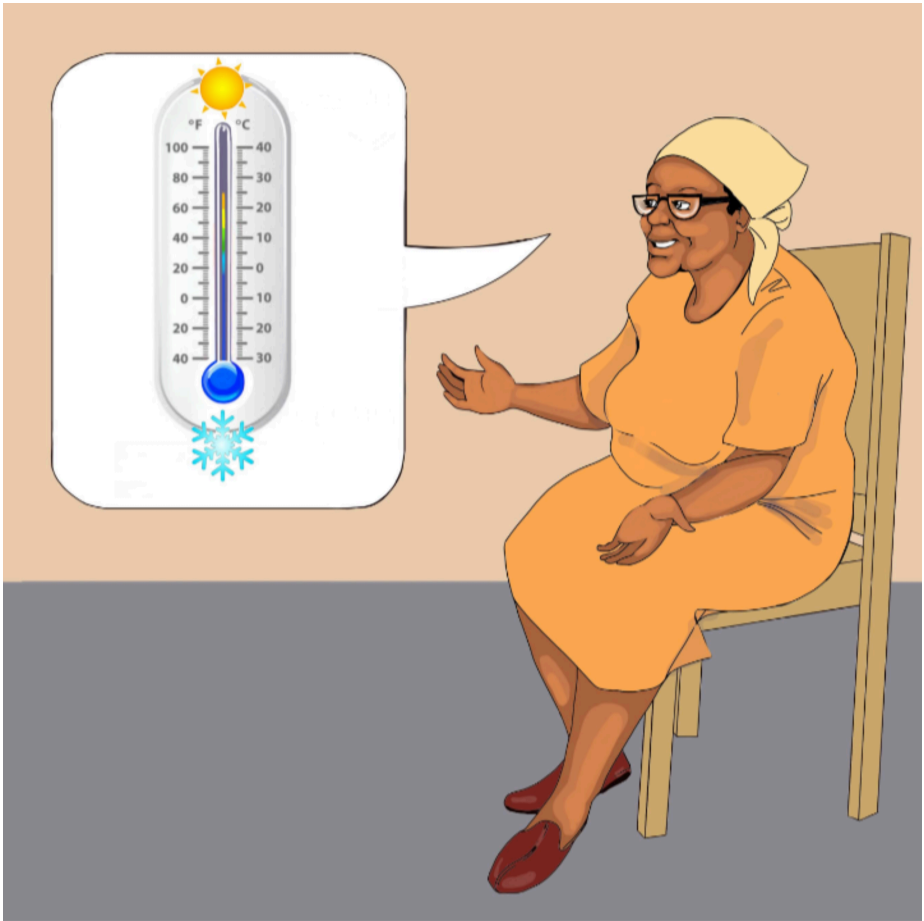


Vha lumelisa, “Ndi matsheloni Makhulu, ndi phosho ya mini?”

“Ndi matsheloni! Ndi mukukulume, u ri vusa uri ri ite mishumo ya bulasini,” Makhulu vha sea.



Makhulu vha ri, “Duvha a li athu țavha, fhedzi lo tsha. Nga luțavula đuvha li lenga u țavha, ła țavhanya u kovhela.”



Makhulu vha bvela phanda, “Nga luṭavula, mutsho wo fhola. Fhedzi ho dudela u fhirisa vhuriha.”

Lwandle a tenda, “A ri athu ṭoda zwiambaro zwa vhuriha.”



Makhulu vha ri, “Nga luṭavula, ni ḡo vhona
vhunzhi ha zwimela zwi tshi shandula muvhala,
zwa thoma u oma. Ri tsini na u fhedza u kaṅa.”



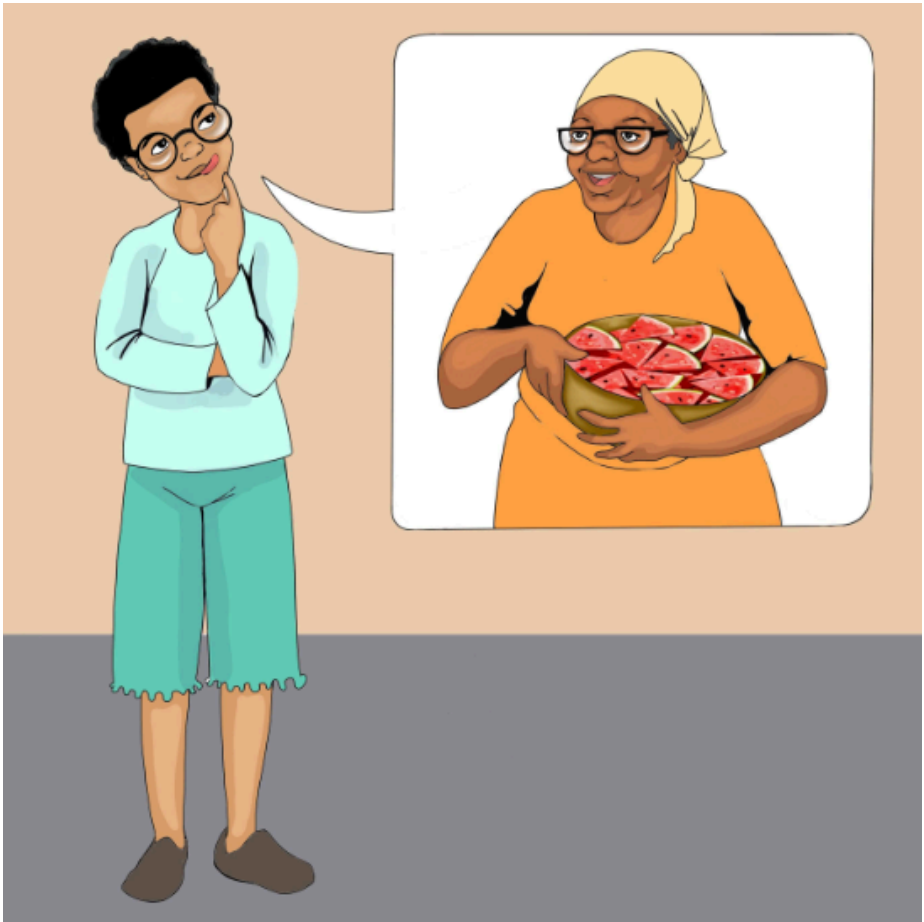
Makhulu vha ṭalutshedza, “Kha heyi bulasi nga luṭavula ri kaṇa ṇawa, khavhishi, kholifuluṭawa, na tshipinitshi.”

Vha engedza, “Nga madekwana ri ḁo ḽa miroho ya bulasini.”



Lihle a ri, “Nṭhani ha u dzulela u renga miroho, ri ḡo ṭavha miṅwe hayani ngei ḡoroboni.

Makhulu vha fulufhedzisa, “Khezwo! Ndi ḡo ni gudisa.”



Lwandle a vhudzisa, “Makhulu, vha a ṭavha mitshelo? Mutshelo une nda u funesa ndi habu!”

Makhulu vha sea, “Ro kaṅa mahabu manzhimanzhi a ḍifhaho!”



“Nga luṭavula, zwifuwo zwo dzwalwaho kana u thothonya nga tshimedzi zwo no aluwa, zwiṅwe ri a zwi rengisa.

Zwifuwo zwashu zwi ri ṅea mafhi, makumba, na ṅama,” ndi Makhulu.



Makhulu vha setshelela, “Nga matsheloni ri ɔo
la makumba, ra kona u yo shuma tsimuni ya
miroho.”

Lihle na Lwandle vho takalela u shuma tsimuni
na Makhulu!

—Mbudziso

1. Nga luṭavula, hu itea mini kha:
2. zwimela?
3. mutsho?
4. u ṭavha na u kovhela ha ḍuvha?
5. zwifuwo?
6. Hu itea mini bulasini ya Makhulu nga yeneyi khalañwaha?
7. Luṭavula lwa hune na dzula hone lwo fhambana hani na lwa tshiṭorini? Ṭalutshedzani.
8. Ndi vhutsila vhufhio vhune vhasidzana vha nga vhu guda kha Makhulu?



Ulwazi Lwethu is a Zenex Foundation funded and initiated project to develop a series of graded and leisure African language readers and teacher support materials. This project is targeted at teaching and supporting learners in the Foundation Phase to improve their home language reading and understanding. The readers have been originated in nine African languages in collaboration with Molteno Institute for Language and Literacies, Nelson Mandela Institute for Education and Rural Development, Room to Read South Africa, and Saide. All resources are developed as Open Education Resources (OER).



Your attribution should include the following:

Title: Lihle na Lwandle vha guda nga luṭavula

Author/s: Sara Mohale

Translator/s: Doris Manyamalala

Illustrator/s: Busisiwe Ndlovu


Assurer/s: Tshedza Tlhako

Language: Tshivenda



© Zenex Foundation - Saide 2023

CC BY includes the following elements:

BY  - Credit must be given to the creator

