



Mmantsae Moche Diale le maatla a letsatsi

Thembekile Malibe

Omphemetse Patient Ramathatse



Buka e, e ka ga Mmantsae Moche Diale,
Mmasasense wa Aforika Borwa.

Mmantsae ke Mmasaense yo o ithutang
ka maatla a letsatsi, le ditsela tse batho
ba ka dirisang maatla ao.



“Baithuti, ke batla go lo bolelela ka ga Mmasaense wa MoAforika Borwa yo o botlhokwa,” ga rialo morutabana Mpilo.

“O simolotse botshelo kwa motsaneng wa kwa Limpopo mme a nna Mmasaense yo o kwa godimo.”

Morutabana a tlatsa, *Bonetetsi* ke karolo ya *Bonetetsi ba Saense*, e leng kitso le maatla.”



Morutabana a tswelela, “Mogaka wa rona wa Saense gompieno ke Mmantsae Moche Diale.”

“O tsaletswe kwa motsaneng wa Ga-Masemola kwa Limpopo. O tsene sekolo kwa Sekobetlane Maphutha.”

“Motsana wa gaabo o ne o se na motlakase, le fa e le gore go ne go na le dipale tse dikgolo tsa motlakase.”



“O ne a kgathwa ke tsa maatla le gore re a bona jang fa a gola. O ne a itse gore mongwe le mongwe o ne a tlhoka maatla.”

Morutabana a emisa ka kgang ya gagwe, mme a botsa, “A lo ka mpoletlela metswedi mengwe e e dirang maatla a motlakase?”



“Malatlha ke sediriswa sa bothokwa. Re fisa malatlha go dira motlakase,” Nhlavu a rialo.

‘Ee, fela lefatshe la rona le felelwa ke malatlha le didiriswa tse dingwe tsa maatla tse di sa ntšhwafaleng,” morutabana a araba.

“Letsatsi le phefo ke didiriswa tse di ntšhwafalang,” Sphe a tlatsa, morutabana a dumela.



Morutabana a tswelela, “Mmantsae o ne a itse gore o ne a batla gore botlhe ba nne le maatla a a tlhotlhwatlase a le phepa, ka didiriswa tse di ntšhwafalang.”

“O ithutetse Dipalo le Disaense tsa Tlhago kwa sekolong, a rata Bonetetsi. A itse gore o batla go ithutela Bonetetsi kwa yunibesithing,” morutabana a rialo.



“Batho ba botsa Mmantsae, ‘O tllile go dira eng ka Bonetetsi? A o ka bona tiro?’ Ba mo nyemisa mooko.

“O ne a ithutela dithuto tsa Saense le tsa Thuto, go nna morutabana wa Saense. Gape o ne a kgatlhwa ke go ithutela maatla a a ntšhwafalang,” morutabana a rialo.



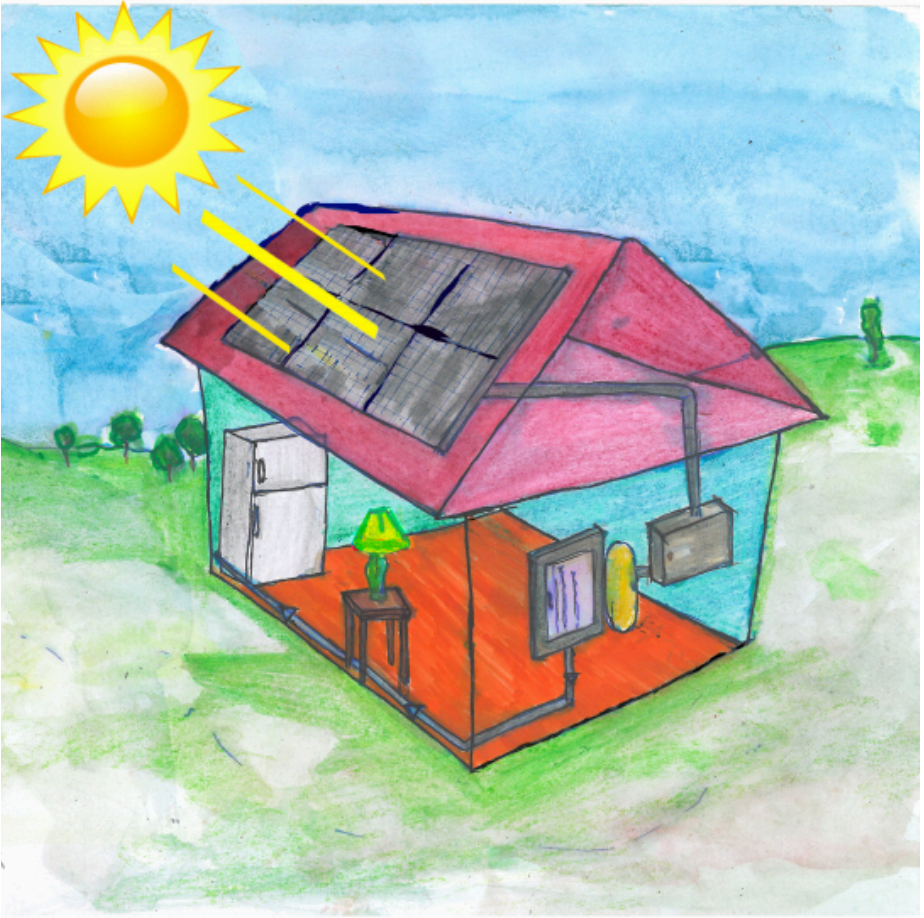
“Morutabana, Mmantsae o ne a kgathilwe ke bomang ka nako eo?” Sphe a botsa.

“Go ne go le basadi ba le mmalwa fela ba badiri ba Bonetetsi, ba bantsho ba ne ba balwa,” morutabana a araba. “Mmantsae o ne a dira fela le borasaense ba banna. O ne a sena ba a ba itseng ba Aforika Borwa ka nako eo.”



“Morago ga dingwaga tse dintsi tsa go ithuta, Mmantsae a nna Moporofesara wa Saense. Jaanong o a ruta le go batlisisa kwa Yunibesithing,” morutabana Mpilo a rialo.

“Ke mongwe wa baša ba basadi ba bantsho ba ikgantshang ka ena ba ba ratang Saense, segolo jang Bonetetsi.”



“Morutabana a tthalosa, “Dipatlisiso tsa gagwe ke ka ga go tshwara maatla a letsatsi a mantsi, le go a boloka.”

“Maatla a a bolokilweng a ka dirisiwa go tlamela metsemagae ka motlakase.”

“Maatla a letsatsi ke maatla a a tlhotlhwatlase a a ntšhwafadiwang.”



“Go buiwa ka eng fa go twe didiriswa tsa maatla tse di ‘ntšhwafadiwang le go sa ntšhwafadiwe?’” Morutabana a botsa.

“Maatla a a ntšhwafadiwang ke maatla a a sa feleng, jaaka letsatsi,” Ntando a rialo.

“Maatla a a sa ntšhwafadiweng a a fela, jaaka malatlha, ga a ntšhwafadiwe,” Vusiwe a rialo.



Thuto e a fela.

Morutabana a feleletsa, “Mmantsae o eteletse pele setlhopha sa babatlisisi ba dithuto tsa ‘maatla a a sa leswefatseng tikologo – maatla a a ntšhwafadiwang.”

“Maikemisetso a dipatlisiso ke go bona ‘disele tsa sola tse di ka tsayang maatla a mantsi kwa letsatsing, le go a fa batho.”



Fa baithuti ba phutha, Morutabana Mpilo a re,
“Moporofesara Diale o eletsa go bona basadi ba
le bantsi ba ithutela Bonetetsi. Ke solofela bontsi
jwa basetsana fa ba tla ithutela Saense le
Dipalo!”

“Le basimane tota!” Morutabana a nyenya.

—Dipotso

1. Goreng Mmantsae a ne a na le kgatlhegelo ya maatla fa a le monnye?
2. 'Maatla a letsatsi' ke eng? A ka dirisetswa eng?
3. Moporofesara Diale ke mofuta ofe wa Bosaense? Dipatlisiso tsa gagwe ke ka ga eng?
4. O itemogetse mathata afe fa a sala ditoro tsa gagwe morago?

—Dibuka tse di mo motseletseleng o

- Andile Mji
- Asnath Mahapa
- Bongani Mayosi
- Charlotte Maxeke
- Mmantsane Moche Diale
- Mulalo Doyoyo
- Tebello Nyokong
- Tshilidzi Marwala

Kanelo e, e tlamilwe le go kwalwa ka puo ya siSwati jaaka karolo ya porojeke ya didiriswa tsa go buisa ya Zenex Ulwazi Lethu ya 2020.



Ulwazi Lwethu is a Zenex Foundation funded and initiated project to develop a series of graded and leisure African language readers and teacher support materials. This project is targeted at teaching and supporting learners in the Foundation Phase to improve their home language reading and understanding. The readers have been originated in nine African languages in collaboration with Molteno Institute for Language and Literacies, Nelson Mandela Institute for Education and Rural Development, Room to Read South Africa, and Saide. All resources are developed as Open Education Resources (OER).



NELSON MANDELA
INSTITUTE FOR
EDUCATION AND
RURAL DEVELOPMENT



Your attribution should include the following:

Title: Mmantsae Moche Diale le maatla a letsatsi

Author/s: Thembekile Malibe

Translator/s: Lorato Trok

Illustrator/s: Omphemetse Patient Ramatlhatse


Assurer/s: Dineo Moatshe, Opelo Thole

Language: Setswana



© Zenex Foundation - Saide 2023

CC BY includes the following elements:

BY  - Credit must be given to the creator

