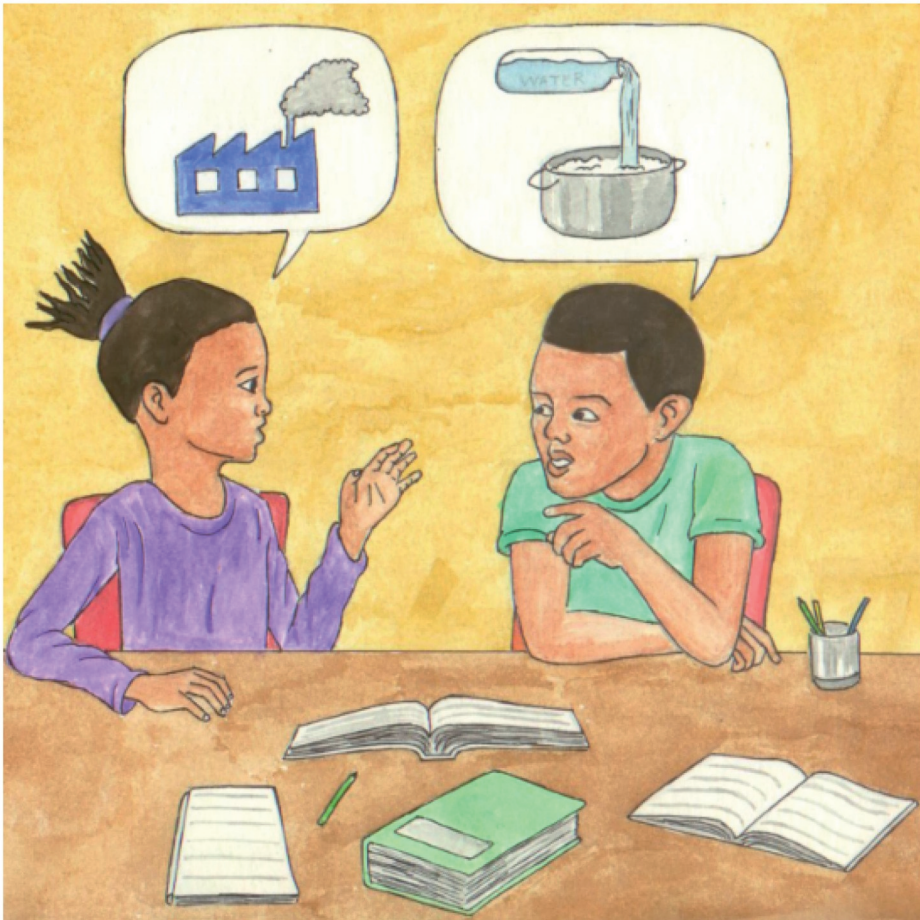




Naka na Nala vha khou ita tshuñwahaya. Vha khou guda nga maḓi.

“Maḓi ha na muvhala na muḓifho, fhedzi ndi tshishumiswa tsha ndeme!” ndi Nala o mangala.



Naka a tenda, “Zwoḽhe zwi tshilaho zwi ḽoḽa maḽi. Vhathu vha shumisa maḽi u nwa, u bika, u kunakisa na u sheledza.”

“Na u ita zwithu dzifemeni,” Nala a engedza.

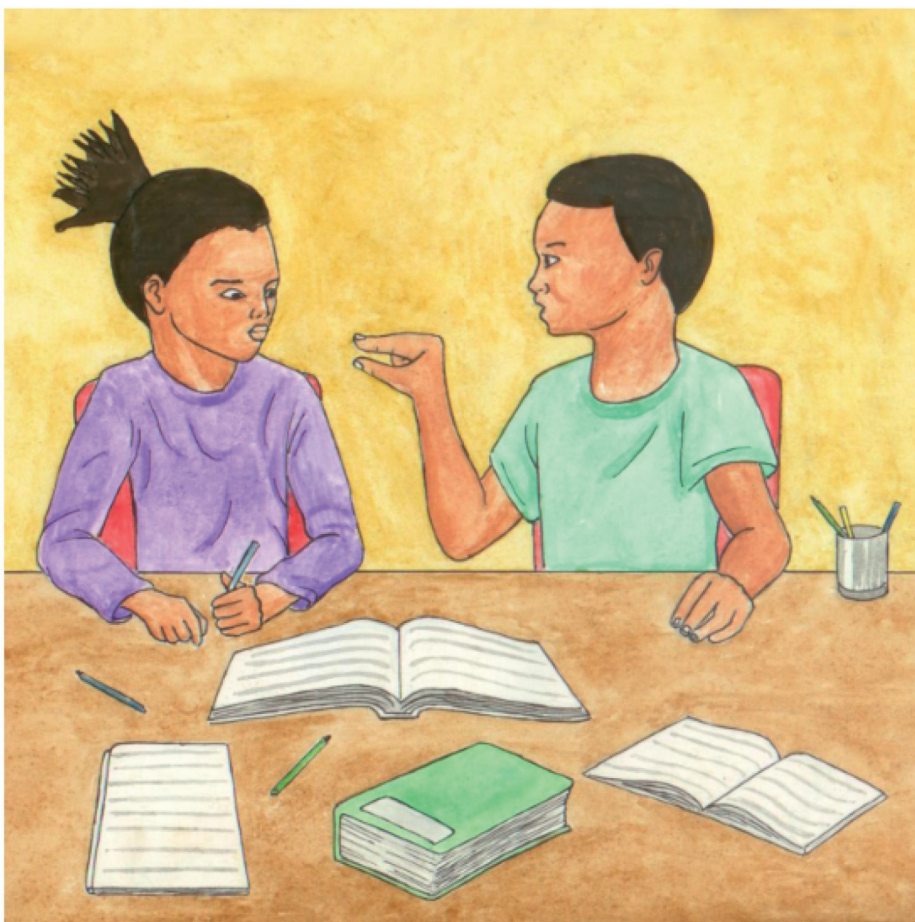


“Tshipiḡa tshihulwane tsha muvhili tsho vhumbiwa nga maḡi! Maḡi ha fhedzi ḡora fhedzi. Mivhili yashu i ḡoḡa maḡi uri i shume,” ndi Naka a tshi ralo.

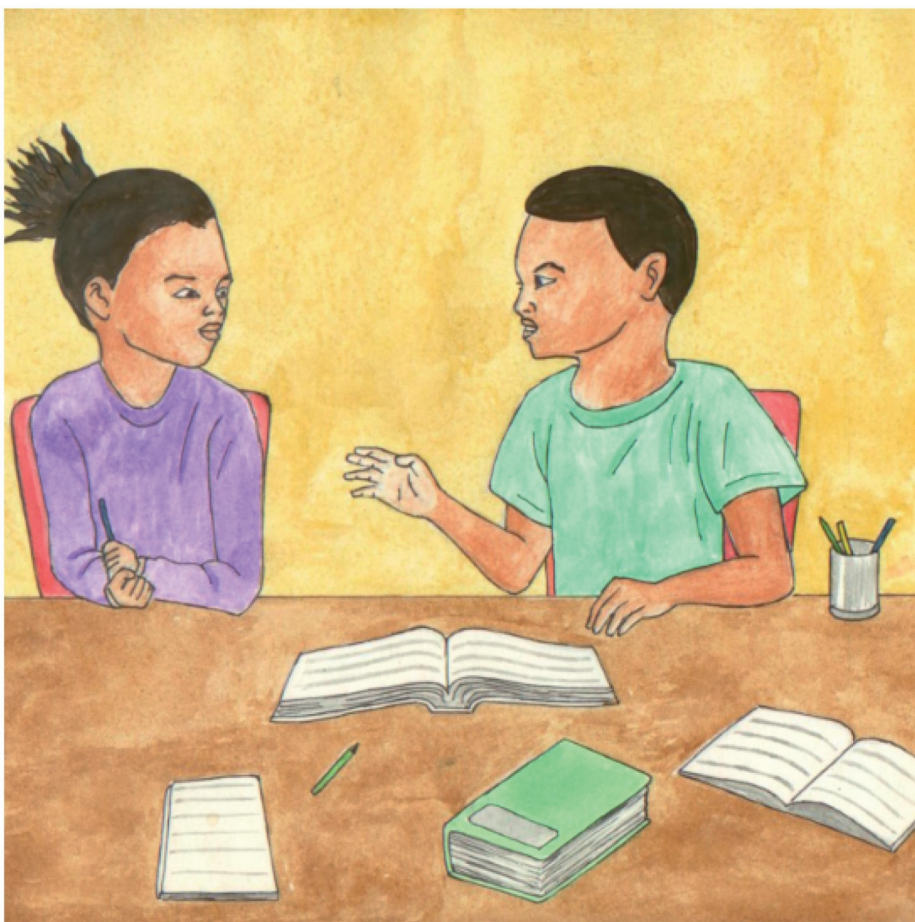


Nala uri, "Vhunzhi ha lifhasi ho fukedzwa nga maqi a re milamboni, maishani, na maqanzheni."

Naka a tenda, "Maqi a fhira tshivhalo tsha tshararu tsha pujanete yashu."



“Fhedzi vhunzhi ha maḓi a kha ḽifhasi ndi maḓi a muḽo. Hu na maḓi maḽukuḽuku fhedzi avhuḓi, ane vhathu vha a ḽoḽa,”
ndi Naka a tshi amba.



“Maḍi a lwanzhe a na muḅo, nahone zwi a konḍa na u ḍura u bvisa muḅo kha maḍi. Fhedzi vhathu vha nga si nwe maḍi a muḅo, vha nwa maḍi avhuḍi fhedzi!” ndi Naka o mangala.



Nala u ri, “Ee, ndi ngazwo ri tshi tea u tšhogomela zwisima zwa mađi ashu avhuđi a kha lįfhasi. Ri songo tshikafhadza milambo na maisha nga mashika.”



Naka u ri, “Kha ri gude nga mutevheṭhaḡu wa maḡi.”

“Maḡi a ya muyani a tshi bva kha ḡifhasi, a dovha a vhuvelela kha ḡifhasi,” Nala a ṭalutshedza.



Nala u bvela phanḁa, “Mashotha maḁuku a ya nḁha lutomboni, a vhumba makole. Maḁi a re kha makole a wela kha ḁifhasi sa mvula, tshifhango, kana mahaḁa.”



Naka u ri, “Ndi na ɗora, ndi khou ɗoɗa maɗi!”.

Nala a fhindula, “Ee, vhuluvhi haṅu vhu ɗoɗa maɗi uri vhu humbule na u guda! Maɗi ndi vhutshilo, a fareni zwavhuɗi.”



—Mbudziso

1. Ndi vhoneyi vhane vha tᵗoda maᵗi avhuᵗi?
Ndi ngani?
2. Nwalani zwithu zwiᵗanu zwine zwa nga
shumiselwa maᵗi avhuᵗi.
3. Ri nga tᵗhogomela hani maᵗi avhuᵗi a re kha
ᵗifhasi?
4. Naa kha ᵗifhasi ho ᵗalesa maᵗi avhuᵗi kana
a muᵗo? ᵗalutshedzani.
5. Olani mutevheᵗhaᵗu wa maᵗi. Shumisani
maipfi a re kha tshiᵗori u ᵗalutshedza zwine
zwa itea.