



# Imifino iwukudla okuhle kakhulu kithina

Busile Ndlovu  
Tammi Mbambo





Isipinashi siyimifino enamacembe. Amacembe aso akhula aye ngaphezu komhlabathi.

Ungasidla siphekiwe noma siluhlaza.

Isipinashi siwukudla okuhle kuwo wonke umuntu.

Imifino iwukudla okuhle kakhulu ezimpilweni zethu.





Iklabishi nalo lingolunye uhlobo lwemifino ekhula iye ngaphezu komhlabathi.

Iklabishi lingadliwa liluhlaza kumasaladi noma liphekiwe.

Bonke abantu kumele badle iklabishi ukuze babe nemizimba ephilile.

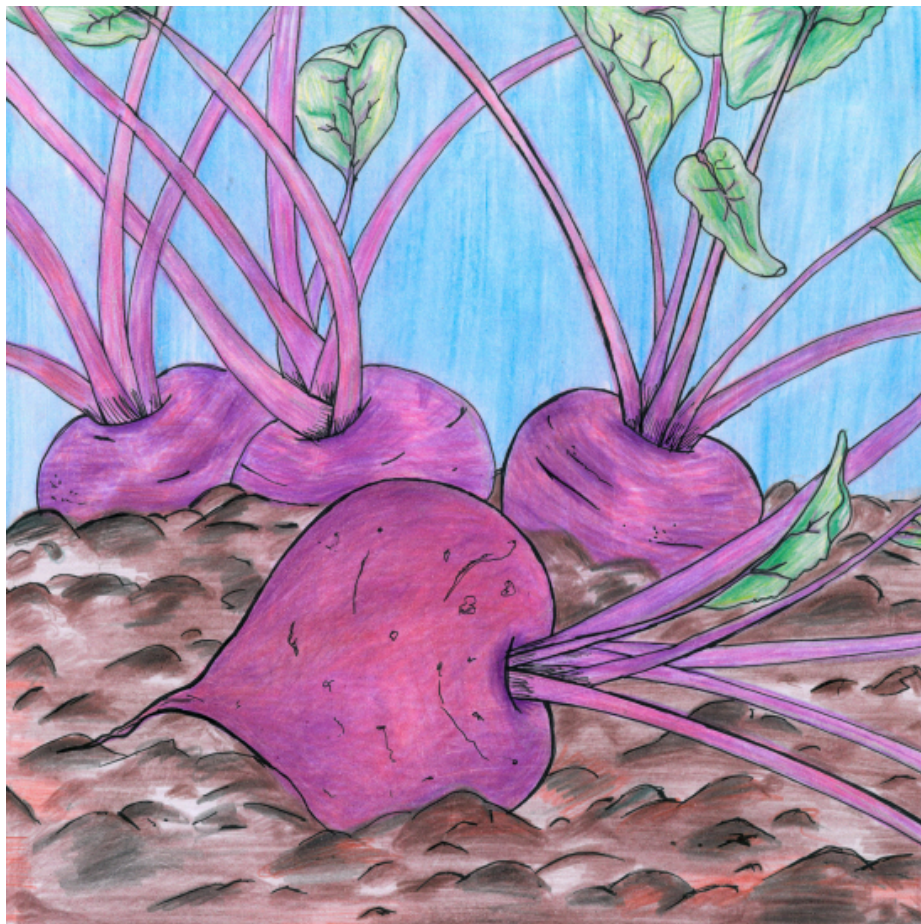


Izaqathe yimifino yezimpande. Zikhula ngaphansi komhlabathi.

Izaqathe zivame ukuba nombala owolintshi.

Zinikeza ukudla kwethu umbala omuhle.

Izaqathe zenza amehlo ethu ahlale ephilile.



Eminye imifino eyimpande ubhithiluthi. Uvame ukuba nombala obomvu ngokujijile.

Ubhithiluthi uvame ukudliwa uphekiwe kodwa ungawudla noma uluhlaza.

Ubhithiluthi ugcina izinhliziyu zethu ziphilile.





Amathanga akhula ngaphezu komhlabathi.

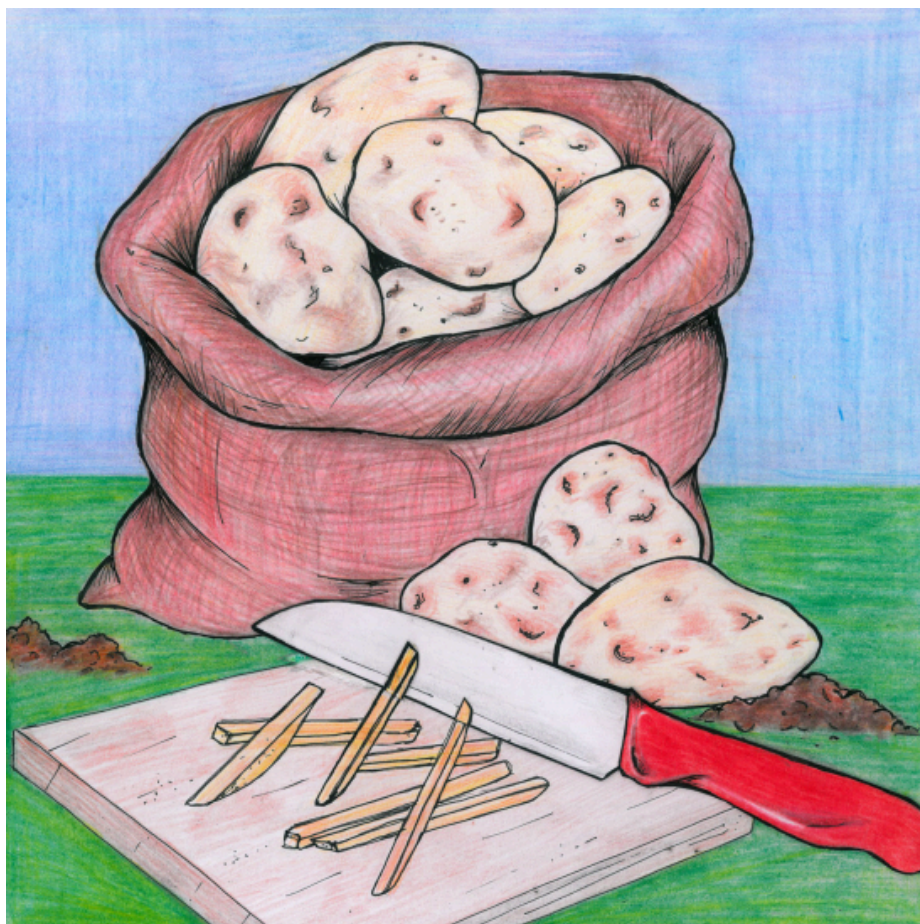
Sivame ukulipheka Ithanga. Linombala ophuzi, oluhlaza noma owolintshi kanti linezinhlamvu eziningi.

Ithanga lenza imizimba yethu ihlale iphilile.



Utamatisi uthela esihlahleni sawo. Uluhlaza ngombala uma usakhula, bese uba bomvu ngokugqamile uma usuvuthiwe. Umumo wawo uba yindilinga noma ube yiqanda.

Ungawudla uluhlaza noma uphekiwe. Usiza ngezinto eziningi ezimpilweni zethu. Ungaphinde usetshenziswe njengekhambi lokwelapha.



Amazambane anempande ekhula ngaphansi komhlabathi.

Ajwayele ukuba yindilinga abe nesikhumba esinombala onsundu kodwa abe mhlophe ngaphakathi.

Kumele uwapheke ngaphambi kokuwadla.





U-anyanisi yimifino ekhula ngaphansi komhlabathi. Mhlophe ngaphakathi.

U-anyanisi ungawupheka noma ungawudla uluhlaza (kodwa ungabi mningi).

Lolu hlobo lomfino lusiza ngokuvikela imizimba yethu ingangenwa yizifo.



Ulwazi Lwethu is a Zenex Foundation funded and initiated project to develop a series of graded and leisure African language readers and teacher support materials. This project is targeted at teaching and supporting learners in the Foundation Phase to improve their home language reading and understanding. The readers have been originated in nine African languages in collaboration with Molteno Institute for Language and Literacies, Nelson Mandela Institute for Education and Rural Development, Room to Read South Africa, and Saide. All resources are developed as Open Education Resources (OER).



Your attribution should include the following:

Title: Imifino iwukudla okuhle kakhulu kithina

Author/s: Busile Ndlovu

Translator/s: Busile Cynthia Ndlovu

Illustrator/s: Tammi Mbambo


Assurer/s: Zanele Zuma

Language: isiZulu



© Zenex Foundation - Saide 2023

CC BY includes the following elements:

BY  - Credit must be given to the creator

