



Miroho yo ri lugela!

Busile Cynthia Ndlovu

Tammi Mbambo





Tshipinitshi ndi muroho wa maṭari. Maṭari a aluwa nṅa ha mavu.

Ni nga tshi ḷa tsho bikiwa kana tsho tou ralo.

Tshipinitshi tsho lugela muṅwe na muṅwe.

Miroho yo ri lugela!



Khavhishi na yone ndi muroho u re na maṭari ane a aluwa nṅa ha mavu.

Khavhishi i ya ḡifha musi yo tou ralo kha dzisaḡadi na musi yo bikiwa.

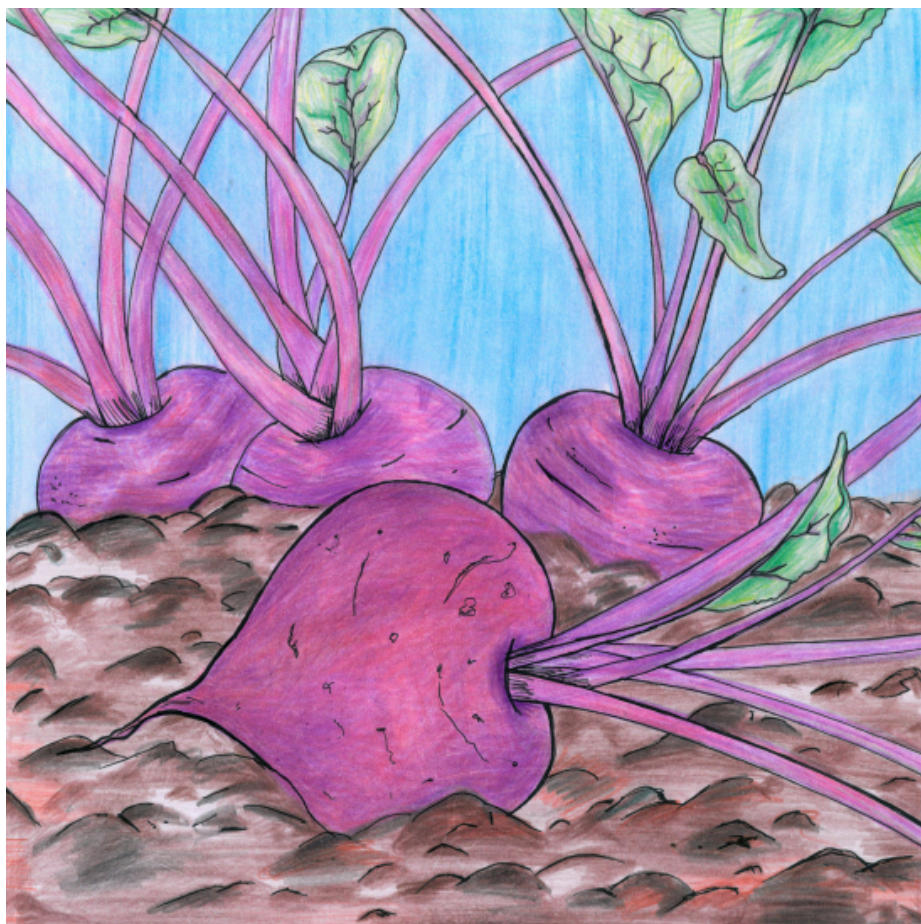
Vhathu vho pfumaho na vhashai vha fanela u ḡa khavhishi uri vha vhe na mivhili yo takalaho.



Kherotsi ndi miroho ya midzi. I mela nga fhasi ha mavu.

Kanzhi kherotsi dzi na muvhala wa swiri. Dzi ita uri zwiḽiwa zwashu zwi vhe na mivhala yo fhambafhambanaho.

Kherotsi dzi ita uri maḽo ashu a vhe na mutakalo wavhuḽi.



Muñwe muroho wa mudzi ndi biṭiruti. Kanzhi i na muvhala mutswuku.

Kanzhi biṭiruti i ḷiwa yo bikiwa, fhedzi ni nga i ḷa yo tou ralo.

Biṭiruti i ita uri mbilu dzashu dzi vhe na mutakalo wavhuḍi.



Mafhuri a mela nn̄a ha mavu.

Kanzhi mafhuri ri a a bika. A na muvhala wa ɗaɗa,
mudala kana wa swiri nahone a na thanga nn̄zhi.

Mafhuri a thusa uri mivhili yashu i dzule i na mutakalo
wavhuɗi.

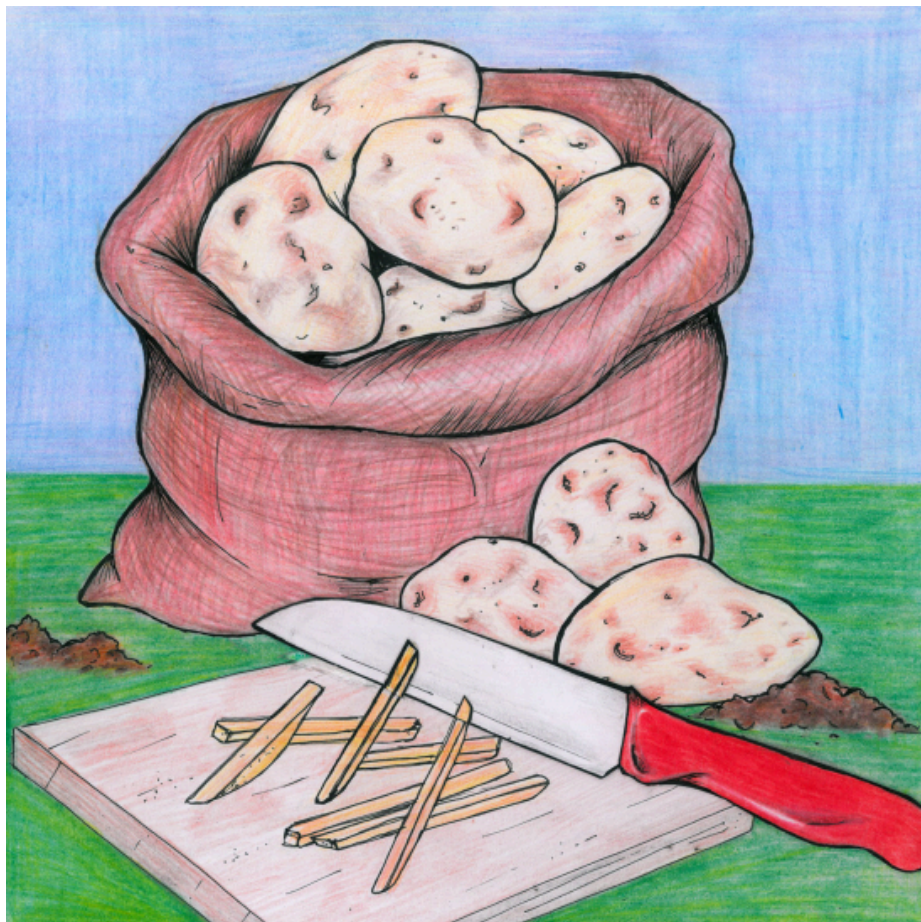


Maṭamaṭisi a mela kha tshiṭaka.

Ndi madala musi a tshi khou aluwa nahone kanzhi a vha matswukutswuku musi o no vhibva. A vha na tshivhumbeo tsha tshitengelele.

A a ḡifha musi a tshi ḷiwa o tou ralo kana o bikiwa. Maṭamaṭisi a na mbuelo nnzhi dza mutakalo.

A nga dovha a shumiswa kha zwa ngalafho.



Ɖabula ʘi na tsinde ʘi melaho fhasi ha mavu.

Kanzhi maɗabula a na tshivhumbeo tsha kumba na lukanda lwa buraweni, nahone ndi matshena nga ngomu.

Maɗabula a fanela u bikiwa a sa athu a ʘiwa.



Nyala ndi muroho wa tshitengelele une wa mela fhasi mavuni. Nga ngomu u na muvhala mutshena.

Nyala dzi a bikiwa kana dza l̥iwa dzo tou ralo (hu si nga vhunzhi).

Hoyu muroho u thusa u tsiredza mivhili yashu kha malwadze.



Ulwazi Lwethu is a Zenex Foundation funded and initiated project to develop a series of graded and leisure African language readers and teacher support materials. This project is targeted at teaching and supporting learners in the Foundation Phase to improve their home language reading and understanding. The readers have been originated in nine African languages in collaboration with Molteno Institute for Language and Literacies, Nelson Mandela Institute for Education and Rural Development, Room to Read South Africa, and Saide. All resources are developed as Open Education Resources (OER).



NELSON MANDELA
INSTITUTE FOR
EDUCATION AND
RURAL DEVELOPMENT



World Change Starts with Educated Children®

Your attribution should include the following:

Title: Miroho yo ri lugela!

Author/s: Busile Cynthia Ndlovu

Translator/s: Tshedza Tlhako

Illustrator/s: Tammi Mbambo


Assurer/s: Doris Manyamalala

Language: Tshivenda



© Zenex Foundation - Saide 2023

CC BY includes the following elements:

BY  - Credit must be given to the creator

