

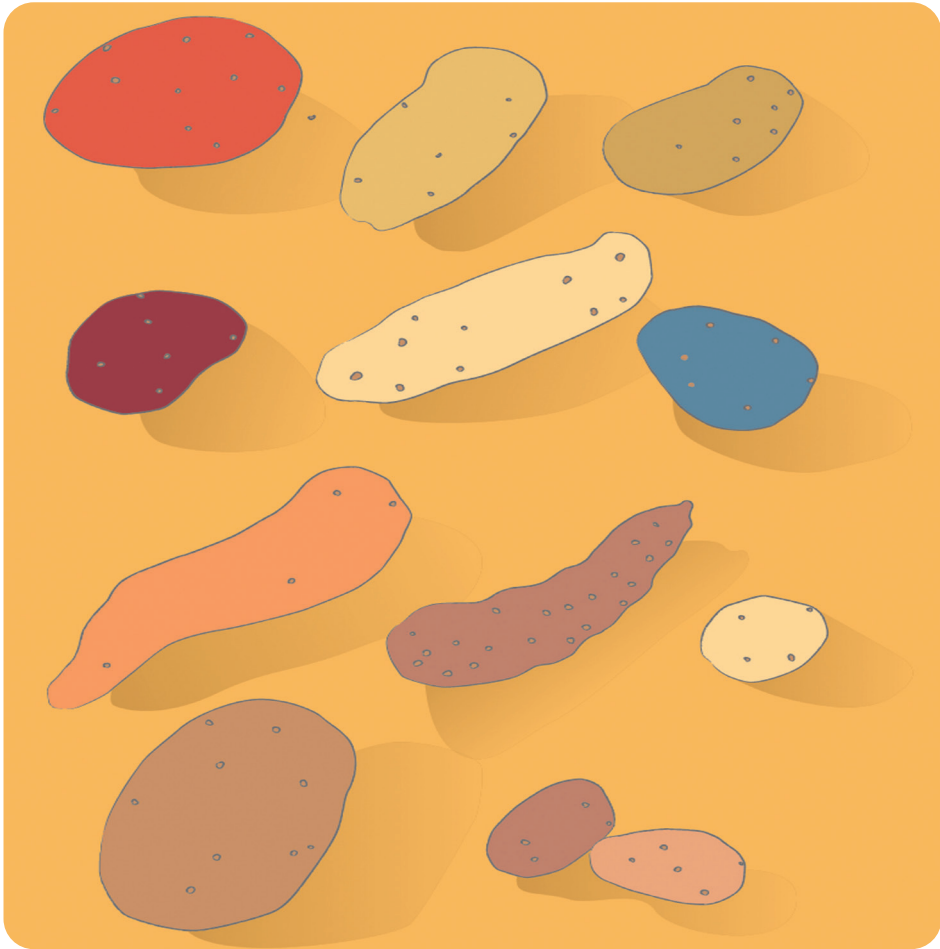


Konke ngeetapile



NguNangamso Khoza





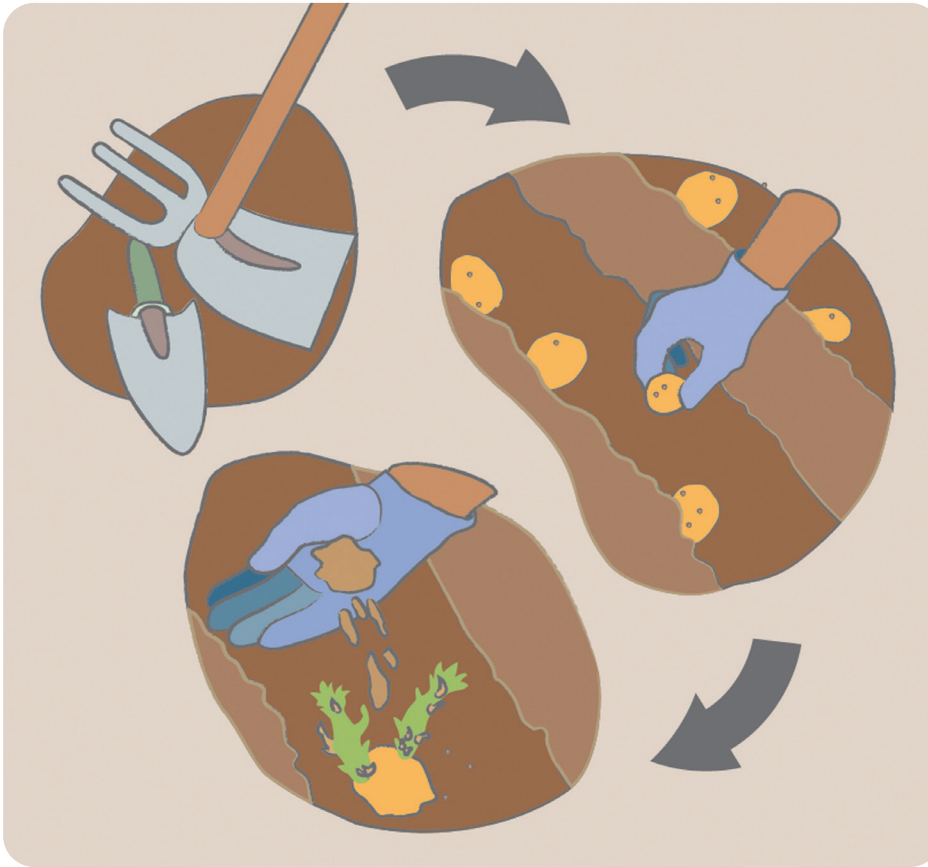
Iitapile yenye yeendidi zemifuno enezakha
mzimba ezinika impilo. Iitapile zifumaneka
ziyimibala ayahlukeneyo.



Iitapile uzilima xa kuqala ixesha lokulima, xa neqabaka iphelile emhlabeni. Umhlaba akufuneki ube manzi kakhulu ube ludaka. Akufuneki nokuba wome kakhulu.



Imbewu yeetapile iyabola xa ithe yatyalwa
kumhlaba omanzi kakhulu.



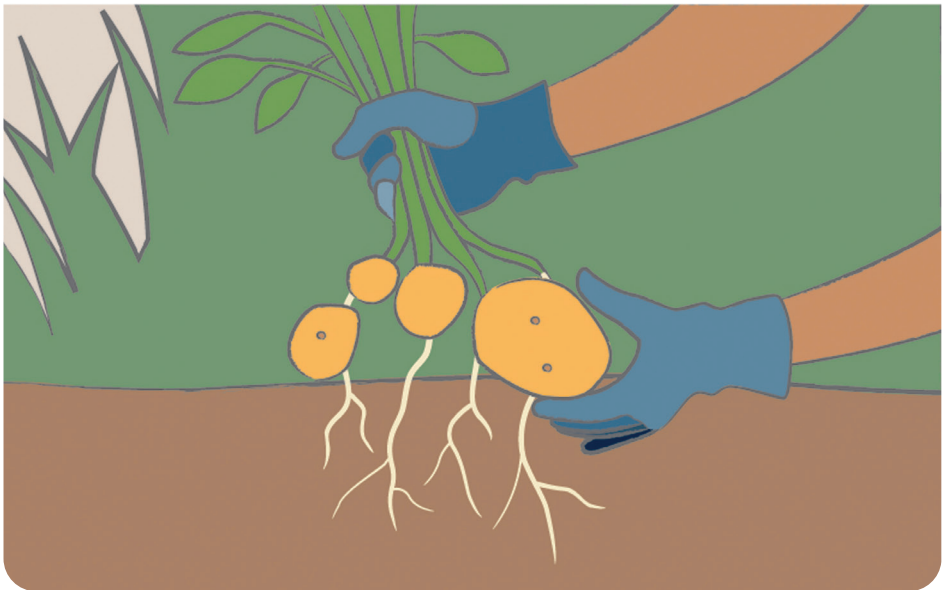
Imingxuma yokufaka imbewu ayibi nzulu. Umlimi uye asebenzise igaba, umhlakulo okanye nasiphi isixhobo sokomba egadini. Emva koko, afake imbewu esebenzisa kwa eso sixhobo ukuphinda ayigqumelele ngomhlaba. Maxa wambi uye agalele izichumiso ngaphezulu





Iitapile ezincinci ziqala ukuvela emva kweeveki ezilishumi zilinyiwe. Iitapile ezinkulu zithatha malunga neentsuku ezingamashumi asibhozo ukuya kwikhulu ukufikelela kwithuba lokuba zivunwe.

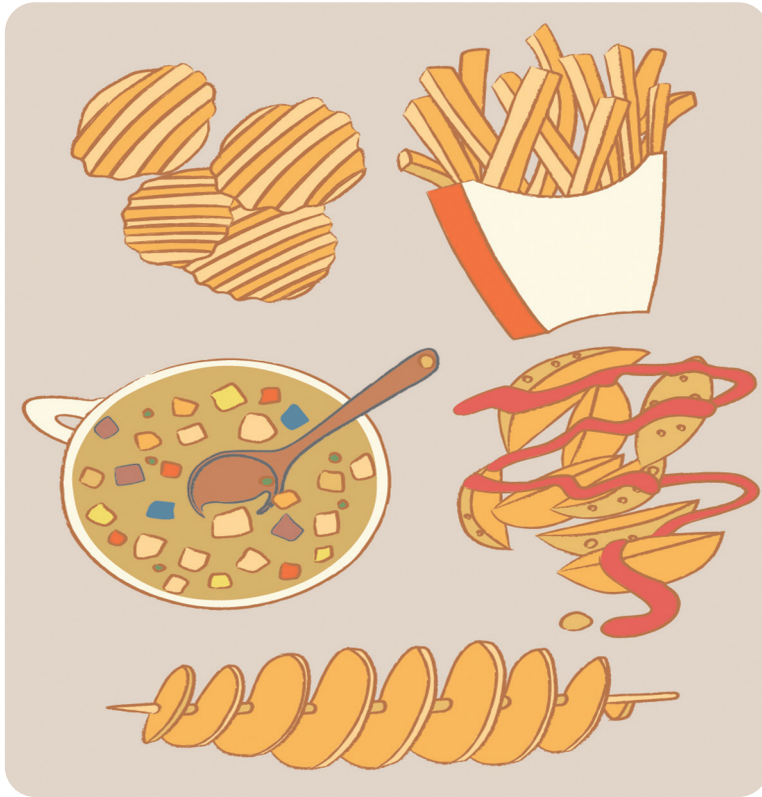
Amagqabi eetapile ngawo achazayo xa silungile isivuno. Kulindwa ukuba ezi ndawo zizintyatyambo zife ngokupheleleyo phambi kokuba kuqaliswe ukuvunwa. Esi iba sisiqinisekiso sokuba iitapile zigqibile ukukhula zikulungele ukuvunwa.





Umlimi usebenzisa umhlakulo okanye igaba ukomba. Akufuneki asebenzise amandla ukuze angazicandi iitapile. Maxa wambi uye azivune ngezandla. Xa zivuniwe ziyahlanjwa kususwe umhlaba. Zigcinwa kwindawo enganakufikelela imitha yelanga ukuzikhusela zingaboli.





Zininzi iindlela zokonwabela isivuno. Abantu baye bazipheke ngamanzi bazidibanise neminye imifuno besenza isuphu. Ukanti zikhe zigcadwe kwenziwe iitshipsi. Olunye uhlobo lweetapile eziphekiweyo nesithandwa kakhulu ziitapile ezicujiweyo zagalelwe ubisi nebhotolo.

Yeyiphi indlela owonwabela ngayo isivuno setapile?