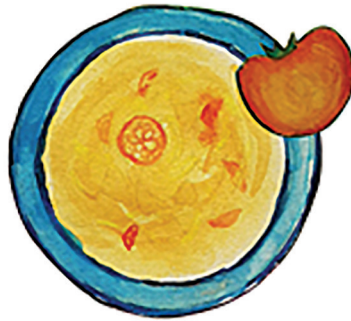




Isuphu emnandi

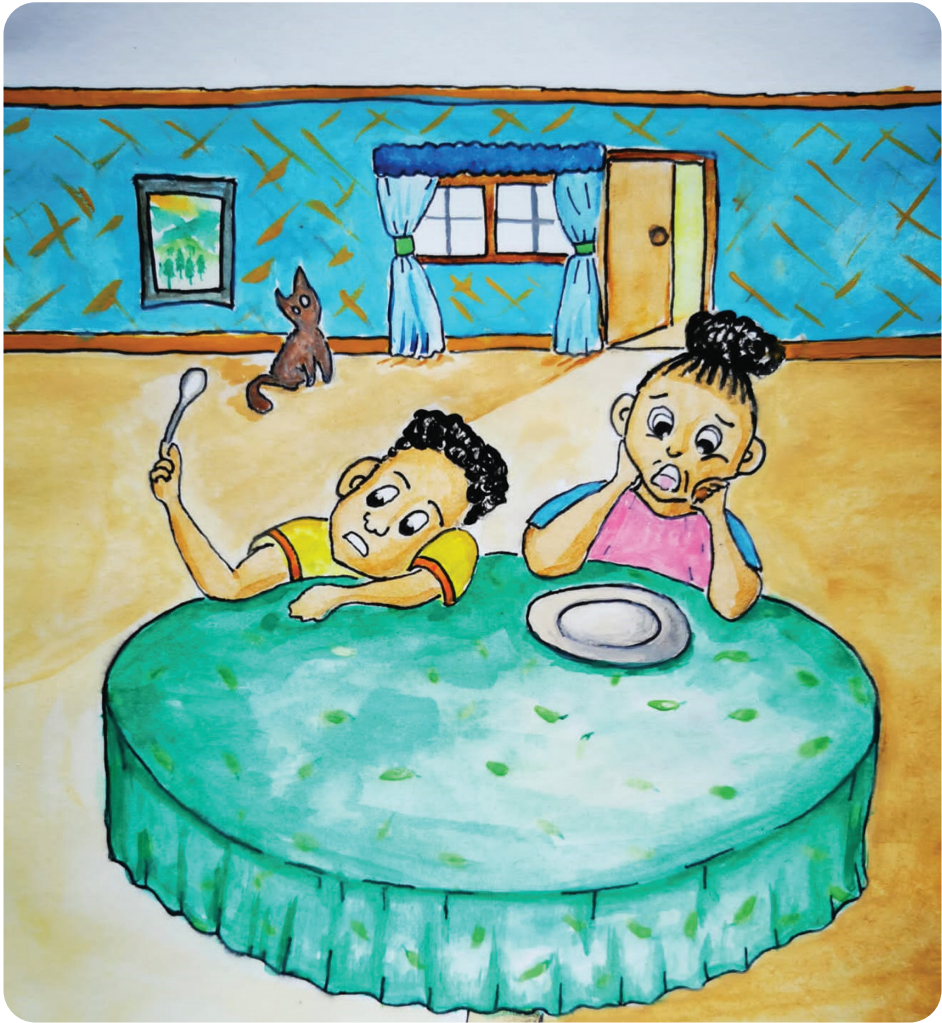


NguKedibone Tladi





UBonga noAnele bakhangela ukutya ekhabhathini. Akukho ukutya ekhabhathini.



Bacinga icebo lokuzenzela into yokutya.



Baya emva kwendlu.
Bajonge isitiya semifuno.



Imifuno ikulungele ukuvunwa.
Imifuno iyilungele imizimba yethu.



UBonga ukha itumata.
Uyacula ngelixa evuna iitumata.



UAnele uyadanisa ngelixa uBonga esikha
iitumata.



Ngoku uAnele uvuna iitapile.



UBonga uyadanisa ngelixa uAnele evuna iitapile.



UBonga uvuna itswele.

UAnele uyadanisa ngelixa uBonga evuna itswele.



UBonga noAnele bagqibile ukuvuna imifuno esitiyeni. Bapheka isuphu yemifuno.



UBonga noAnele bonwabile.
Batye isuphu yemifuno emnandi.