



# Notshi

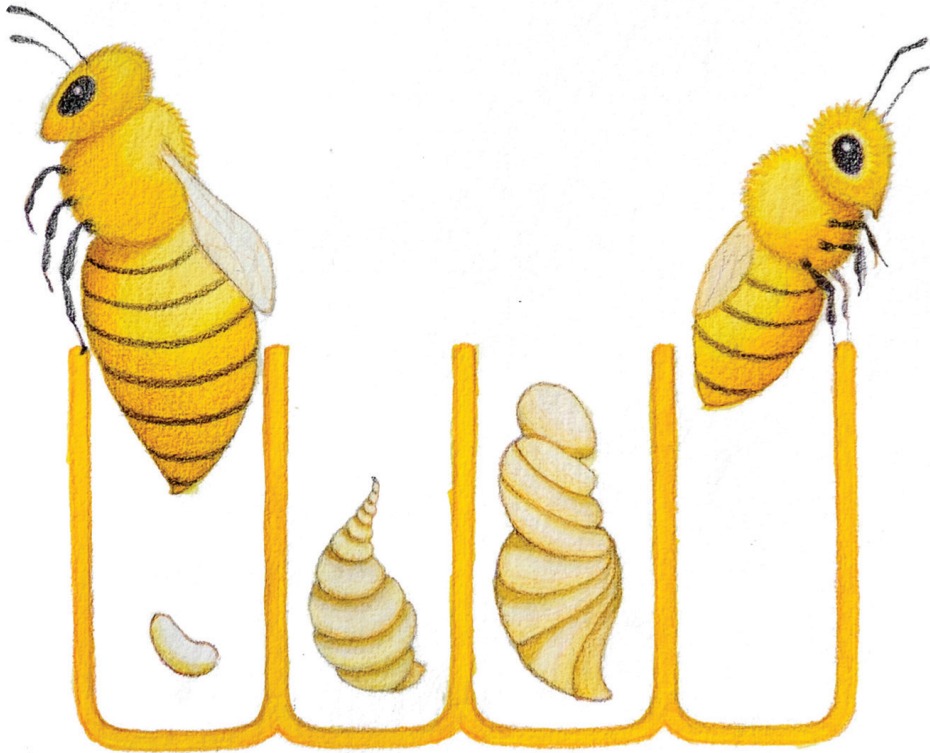


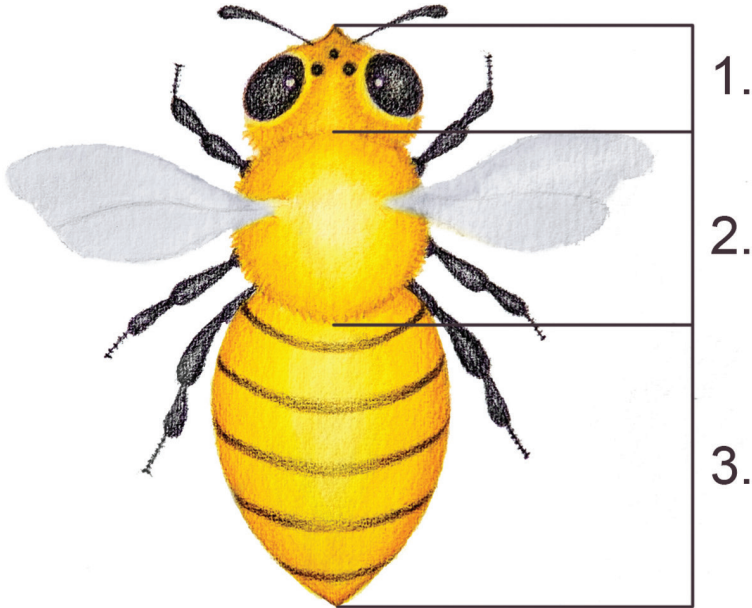
Nangamso Ka NomaHlubi-Koza





Notshi dzi thoma vhutshilo sa makumba.  
Makumba a thothonya, a vha sumbandila  
nahone nga murahu a vha notshi.





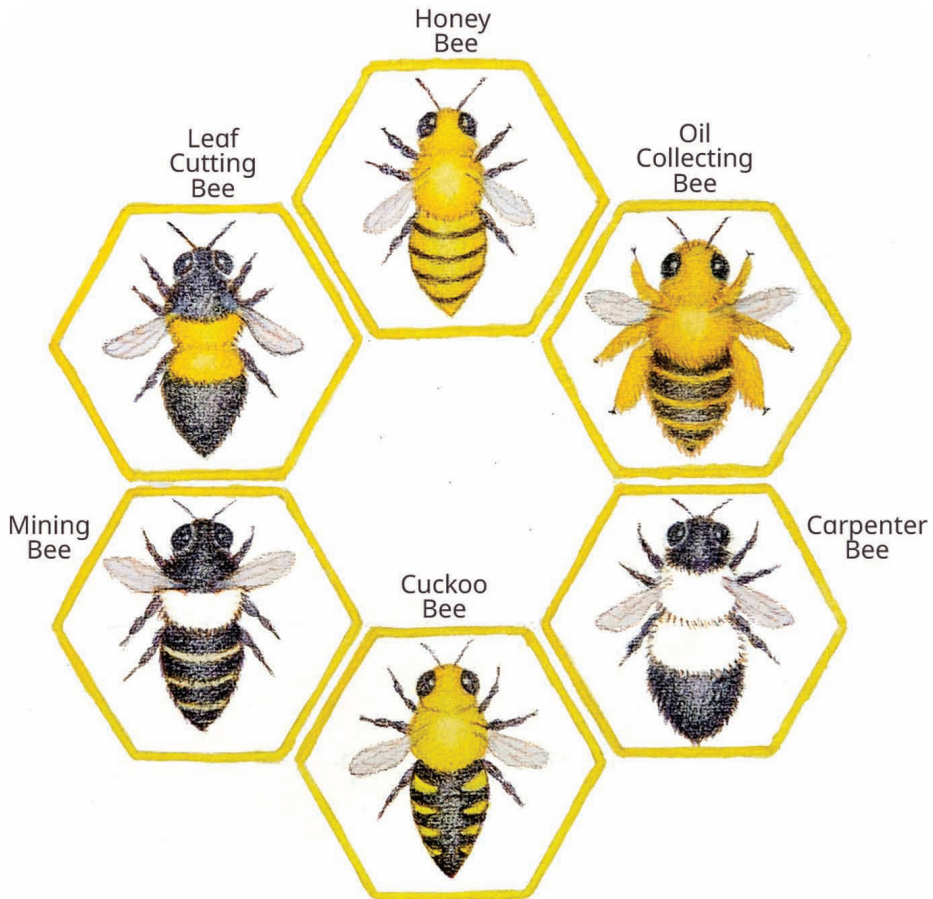
Ṛotshi ndi zwickhokhonono zwi sa dzulisei. Mivhala yadzo ndi ṭaṭa kana musuku nyana na mitalo ya buraweni. Mivhili ya ṇotshi i na zwipiḍa zwiraru; ṭhoho, khana na thumbu. Dzi na maṭo maṭanu. Mavhili a hone ndi mahulu.

Dzi na milenzhe ya rathi. Iyo milenzhe i dovha ya katela mitshila yadzo, i fara zwithu na u kuvhanganya ṇunzwu.



Hu na ɲotshi nnzhi. Vhunzhi hadzo ndi ɲotshi dza mutoli.

Dzi dzula fhethu hune ha vha na khosikadzi.





Ḽotshi dzi funa fhethu hu re tsini na maluvha na miri. Afho fhethu hu katela ngadeni na ḽakani. Hune ha vha na maluvha manzhisa, ḽotshi dzi dzula hone.



Khosikadzi yadzo i kudzela makumba manzhi,  
nga zwenezwo ha engedzea tshivhalo tsha  
makumba,

Notshi dzi a ṭavhanya u ita mutoli. Notshi  
dza vhashumi dzi kunakisa vhudzulo, u  
kuvhanganya muvula na n̄unzwo. Dzi zwi itela  
u n̄ea zwiliwa guma la n̄otshi.





Notshi dza mutoli dzi davhidzana nga u tshina. Musi dzi tshi vhona maluvha o nakaho, dzi a kungana nga u tshina. Izwi ndi ngauri maluvha ndi ane a dzi itela nunzwu.



Notshi dzi ita mushumo wa ndeme wa u  
vhulunga mupo nga u thusa u alusa maluvha.  
Saizwo notshi dzi tshi la nunzwu, dzi  
kuvhanganya movula nga milenzhe yadzo  
mivhili u bva kha linwe liluvha u ya kha linwe.

Munwe movula u a wa musu u tshi khou isiwa  
hayani. Izwi zwi ita uri maluvha a aluwe fhethu  
hunzhi.









Musi dzi tshi swika hayani dzi shumisa muvula na n̄unzwu, zwine zwa hwaliwa kha thumbu dzadzo dza mutoli.

N̄otshi dza mutoli ndi zwickhokhonono zwi zwoṭhe zwine zwa ita zwiliwa zwa vhathu uri vha le. Mutoli u a ḍifha. Tshinwe tshifhinga u a shumisiwa vhudzuloni ha swigiri. U dovha wa shumisiwa u alafha zwilonda nga u zwi ḍodza.



Musi ri tshi vhona ṅotshi dzi tshi fhufha, a ri  
humbule uri dzi ri itela mutoli, nahone ri ṭavhe  
maluvha.

