

# Notshi

Tshivenda

Lwata

4A



Nangamso  
Ka NomaHlubi-Koza



Ulwazi  
Lwethu

### Mibvumo (tsedzuluso)

dz, fh, kh, vh, mb, nd, ng, zw, tsh, nd, ny, sh, th, ṭh, bv, řw, ts

### Mubvumo muswa

nzh (milenzhe, manzhisa, manzhi, hunzhi, vhunzhi)

### Maipfhi a u vhalwa nga ndowedzo

nnzhi

hwaliwa

nunzwu

Notshi

Tshivenda

Luja 4A

ISBN: 978-1-77981-544-6

© 2023 Ulwazi Lwethu African Languages Literacy Project

Muřwali: Nangamso Ka NomaHlubi-Koza

Mutshanduli: Mpho Makwarela

Mufanyisi: Saskia Swanepool

Nyolo na kudzudzanyele: Rock Bottom Graphic & Design

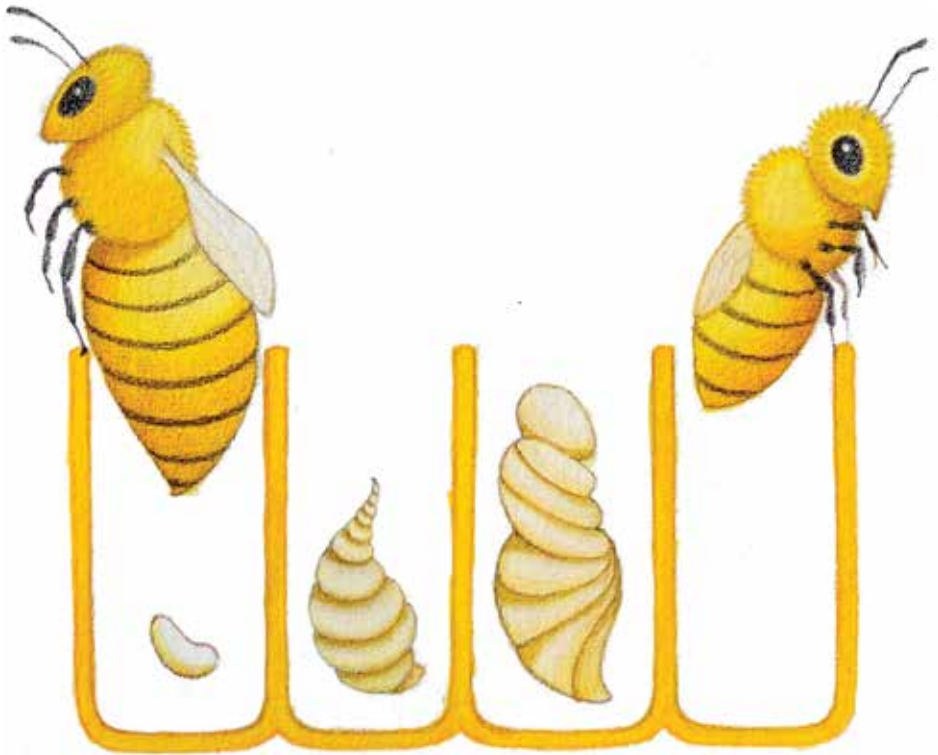
Nzunzanyo ya khaņiso ya u thoma 2023.

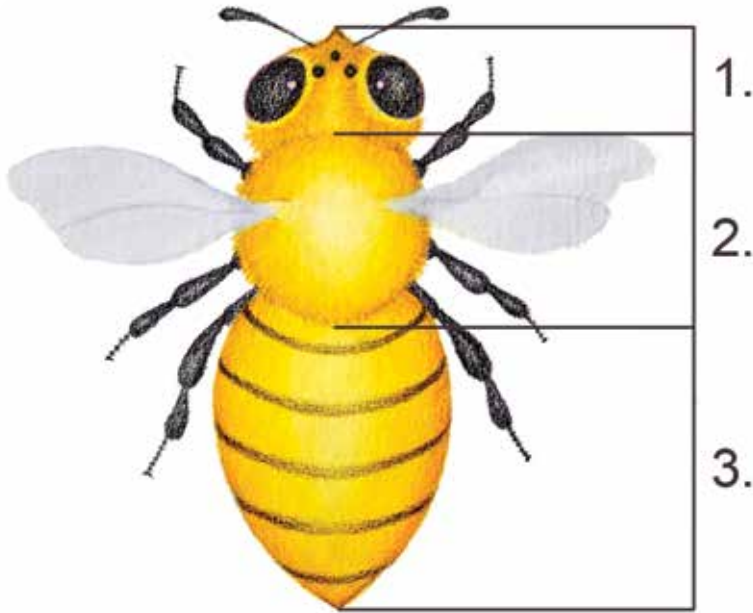
# Notshi



**Nangamso Ka NomaHlubi-Koza**

Notshi dzi thoma vhutshilo sa makumba.  
Makumba a thothonya, a vha sumbandila  
nahone nga murahu a vha notshi.



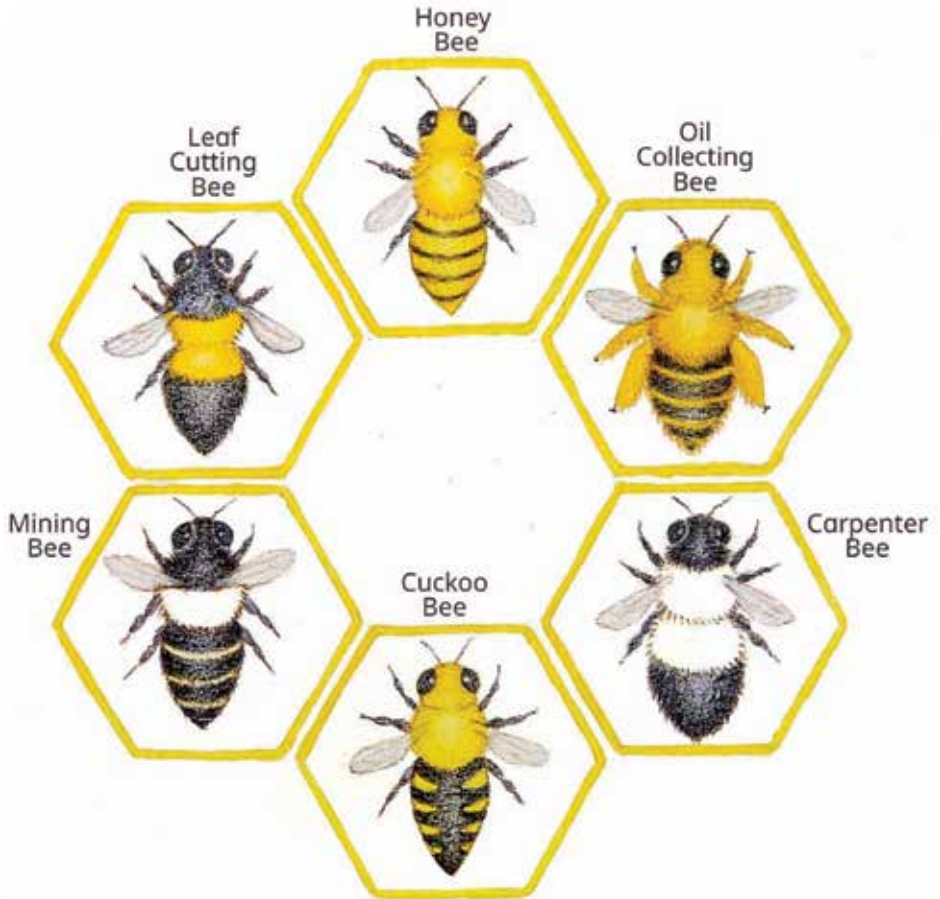


Notshi ndi zwickhokhonono zwi sa dzulisei. Mivhala yadzo ndi ṭaḁa kana musuku nyana na mitalo ya buraweni. Mivhili ya notshi i na zwipiḁa zwiraru; ṭhoḁo, khana na thumbu. Dzi na maḁo maḁanu. Mavhili a hone ndi mahulu.

Dzi na milenzhe ya rathi. Iyo milenzhe i dovha ya katela mitshila yadzo, i fara zwithu na u kuvhanganya n̄unzwu.

Hu na ɔtshi nnzhi. Vhunzhi hadzo ndi ɔtshi dza mutoli.

Dzi dzula fhethu hune ha vha na khosikadzi.





Notshi dzi funa fethu hu re tsini na maluvha na miri. Afho fethu hu katela ngadeni na dakani. Hune ha vha na maluvha manzhisa, notshi dzi dzula hone.

Khosikadzi yadzo i kudzela makumba manzhi, nga zwenezwo ha engedzea tshivhalo tsha makumba,

Notshi dzi a ṭavhanya u ita mutoli. Notshi dza vhashumi dzi kunakisa vhudzulo, u kuvhanganya muvula na n̄unzwu. Dzi zwi itela u n̄ea zwiliwa guma la notshi.







Notshi dza mutoli dzi davhidzana nga u tshina. Musi dzi tshi vhona maluvha o nakaho, dzi a kungana nga u tshina. Izwi ndi ngauri maluvha ndi ane a dzi itela nunzwu.

Notshi dzi ita mushumo wa ndeme wa u  
vhulunga mupo nga u thusa u alusa maluvha.  
Saizwo notshi dzi tshi la nunzwu, dzi  
kuvhanganya movula nga milenzhe yadzo  
mivhili u bva kha linwe liluvha u ya kha linwe.

Munwe movula u a wa musu u tshi khou isiwa  
hayani. Izwi zwi ita uri maluvha a aluwe fhethu  
hunzhi.

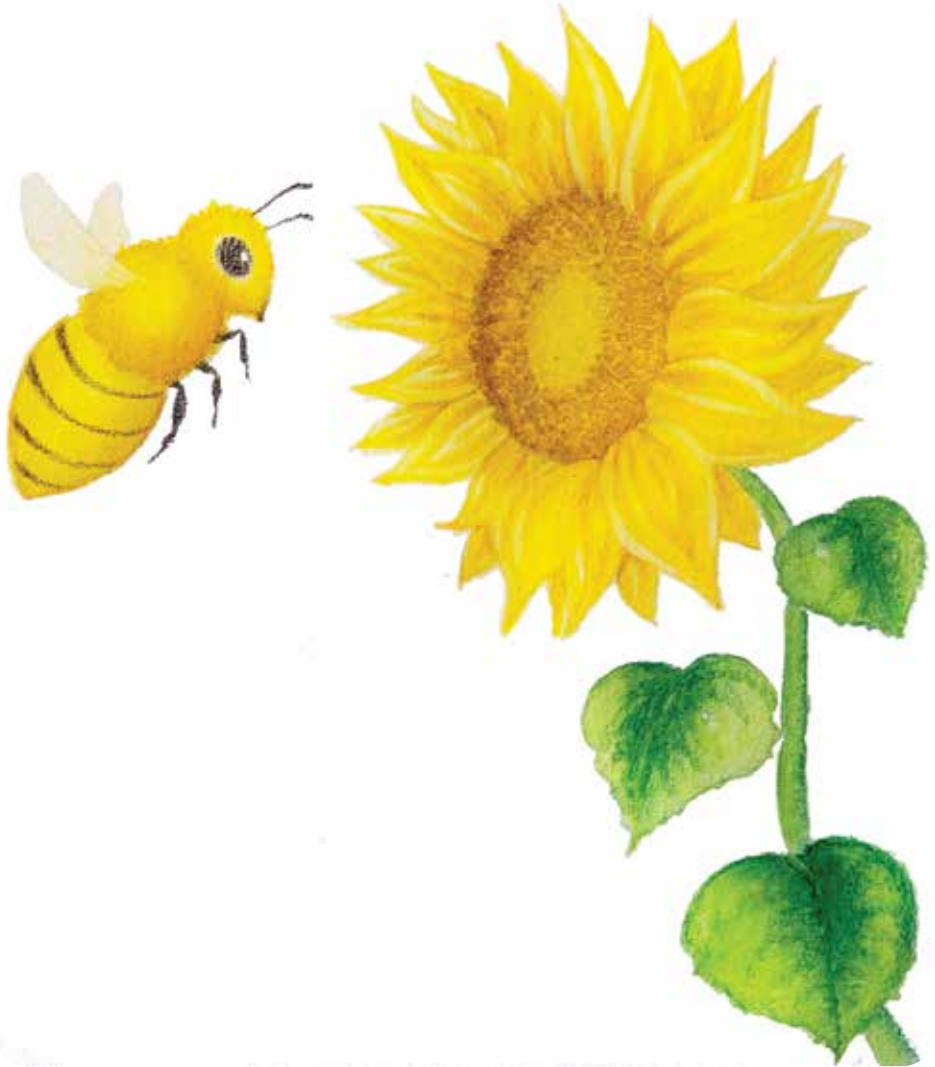




Musi dzi tshi swika hayani dzi shumisa muvula na n̄unzwu, zwine zwa hwaliwa kha thumbu dzadzo dza mutoli.

N̄otshi dza mutoli ndi zwikhokhonono zwi zwoṭhe zwine zwa ita zwiliwa zwa vathu uri vha le. Mutoli u a ḍifha. Tshinwe tshifhinga u a shumisiwa vhudzuloni ha swigiri. U dovha wa shumisiwa u alafha zwilonda nga u zwi ḍodza.

Musi ri tshi vhona notshi dzi tshi fhufha, a ri humbule uri dzi ri itela mutoli, nahone ri tavhe maluvha.





## Readers

### Luḽa 1-2

- Donngi ya Khuliso
- Nunu na Bobi
- ḽiḽowa!
- Muma, aḽama, pfhala!
- Zwivhuya u funa u kunakisa!
- Ngele na Ngudo vha a thusa
- A hu na maḽi
- Tshi a kona u fhufha?
- Mulilo!
- Mavhudzi mahulu
- ṽali na buvhi
- Muoli Marubini!
- Thuso o mangala!
- Baba vha ḽo vhuya lini?
- Phumu o takalaho!
- Mvulatshikolela!
- Thendo na Thiambi
- Kha ri vhulunge maḽi
- ṽhama o farakanea!
- Vha bulasini
- Ivhani na vhulenda, Thabelo
- Swobo ya u ḽifhelela
- Vhasidzana na mbudzi

### Luḽa 3

- Badzhi yo shandukisiwaho
- Dzikhonani kha mitsho yoṽhe!
- A thi funi miroho!
- Mulimi Vho Vele na dziḽhoho
- Tshilidzi o huvhala
- Maḽi! Maḽi!
- Lufuno lwa malwelavanda
- Zwienda zwiswa zwa Pfhano
- Mathaithai a Lwalwa
- Riphuluse o fara mbava!
- Muḽa u ḽhogomelaho
- Musengavhadzimu wa Farisani
- Mutevheḽhaḽu wa vhutshilo ha tshiḽula
- Vhulwadze ha dzinguluvhe
- U thetshela zwijiwa zwa Tshivenda
- Makumba o nyamalalaho a Vuvu
- Luḽamo lwa ṽwasundani lwo bveledzea
- Aḽivhaho na Aḽaho
- Moli na zwithuthubi
- Tshibeḽani tsha Kulani
- Maitele a Vhavenḽa
- Mukapu wa u ḽifha
- Mushonga wa u fhodza
- ṽotshi
- Vhuḽolo ha dzimbeu
- Muhumbulo wavhuḽi wa Tseisano
- Bola yo xelaho
- Wanga u ḽivha tshifhinga
- Ni ṽavhanyela mini, Wandeme?
- Ngweḽa i sa londi
- Mutambi makone
- Zwifhiwa

### Luḽa 4-5

- Rinngi ya musuku
- Lwendo lwa u ya vhumalaphukha
- Muvhuya u londola mutakalo zwavhuḽi!
- Mulimisi o fariwa nga mala
- Soweto
- Tshaka dza zwiendedzi
- Mathoma maswa
- Ndifhedzo ya bulu
- Musidzana wa vhuḽali
- Zwo hulesa kha nḽe!
- Vhatukana vha vhuḽali
- Vhulwadze ha mukhushwane
- Murei wa khovhe
- Thaidzo ngadeni ya makhulu
- Vhusiku vhu si na khofhe
- ṽhangaḽhanganyo tshi sa ofhiho!
- Tshienda tshavhuḽi
- Muḽoro wa Sedzani

**ZENEX**  
FOUNDATION

**MOLTENO**  
INSTITUTE FOR LANGUAGE AND LITERACY  
EST. 1974



Ulwazi Lwethu yo lamedziwa nga Zenex Foundation nahone ndi thandela yo thomiwaho u itela u bveledza tshivhalo tsha bugu dza murole wa fhasi na vhavhali vha vhalelaho u dhiphina vha nyambo dza Afrika na matheriala wa u tikedza vhadededzi. Iyi thandela yo livhiswa kha u funza na u tikedza vhagudiswa vha re kha Mutheo wa Fhasi u itela u khwinifhadza kuvhalele na kupfhesesele kwa luambo lwavho lwa hayani. Bugu dzo bveledzwa nga nyambo dza tshane dza Afrika nga u shumisana ha Molteno Institute for Language and Literacies, Nelson Mandela Institute for Education and Rural Development, Room to Read South Africa, na Saide. Zwishumiswa zwothe zwo bveledzwa sa “Zwishumiswa zwa Pfunzo zwo Vulelwaho” kana “Open Education Resources” (OER).

Please visit our website to download the full copy of this reader:  
[ulwazilwethu.org.za](http://ulwazilwethu.org.za)



Creative Commons Attribution-  
NonCommercial-NoDerivatives  
(CC BY-NC-ND) 4.0  
International Licence

Disclaimer: You are free to download and share this work as long as you attribute Zenex Foundation, but you may not change this work in any way or use it commercially.

