



Kutiphindzisela kwetinkhabi



Mpho Motlhodiemang





Vilakati abenetinkhomo. Kuletinkhomo takhe
bekunetinkhabi letimbili. Lenye beyinembala
lonsundvu lenye imnyama.



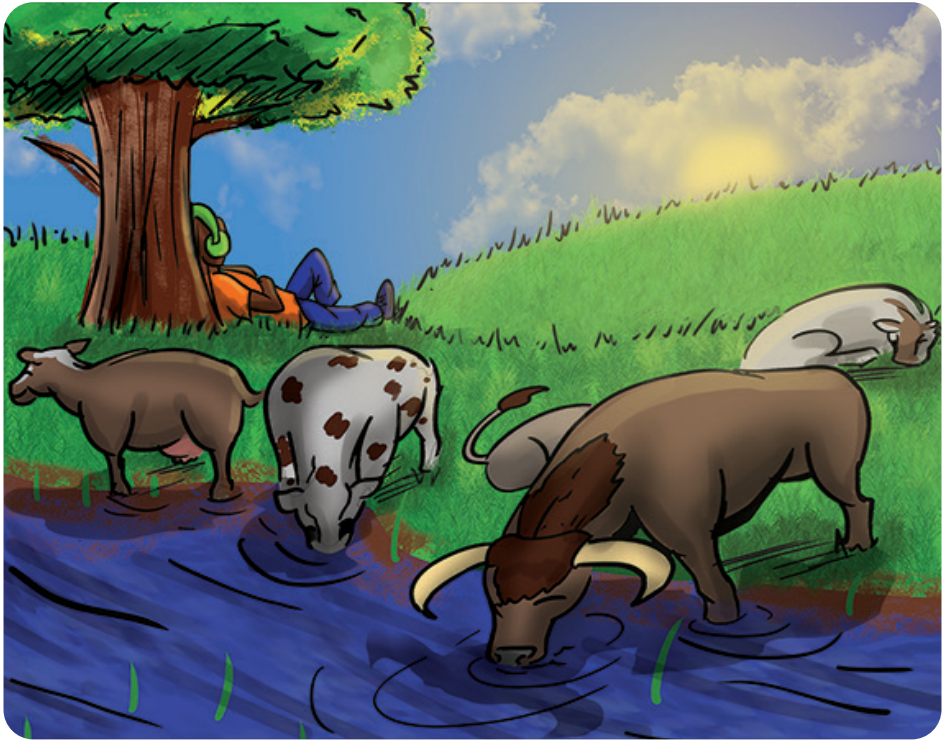


Vilakati abesebentisa letinkhabi kulandza tinkhuni emasimini. Nyalo akakhoni kuhambisa tinkhomo emadlelweni ngobe lidvolo lakhe lilimele.



“Hho! Ngitawukhuluma naLanga kutsi angelusele tinkhomo tami,” kusho Vilakati. Wacela Langa, wavuma.





Onkhe emalanga Langa abetsatsa tinkhomo atimikise emadlelweni, bese atiyise emfuleni kuyewunatsa emanti. Langa abengatitsandzi letilwane, kakhulukati tinkhabu.



Langa abephatsa letinkhabi kabi. Ahleka
uma tehluleka kubalekela ingoti. Ngalesinye
sikhatsi tigcumkele emfuleni angatisiti.





Uma abuyisela tinkhomo ekhaya, abeshaya
tinkhabi atikhutsata kutsi tigijime kakhulu.

Langa abenelunya kakhulu.



Ekhaya, uma acedza kuvalela tinkhomo esibayeni, Langa bekumele atinike kudla kwato. Bese avale lisango ngetigodvo, ahambe.





Ngalelinye lilanga, Vilakati wafuma Langa
kuyewulandza tinkhuni esigangeni. Langa
watsatsa incola netinkhabi wahamba.



Langa wabutsa tinkhuni letanele. Incola yagcwala kakhulu. Tinkhabi tayidvonsa matima incola.

Ngalokwetayelekile, Langa wacala kushaya tinkhabi kutsi tigijime kakhulu. Ngalelo lilanga, tinkhabi atimange tilinge nekugijima. Umtfwalo bewusindza.





Langa wafukutsela kakhulu. Wacala
kutsetsisa tinkhabi. Abengenandzaba.
Tinkhabi betilambile, tomile futsi tikhatsela.



Uma afika ekhaya, Langa wakhumula
tinkhabi watingenisa esibayeni. Wangatiphi
kudla nemanti. Wavala lisango wahamba.





Ngemuva kwekuhamba, tinkhabi takhahlela
lisango lavuleka. Tacala kucoshisa Langa.
Kwaba netintfuli nematje, kwasabalala
yonkhe indzawo.



“Lekelelani! Lekelelani! Tinkhabi
tiyangihlasela!” kumemeta Langa ngelivi
lelikhulu.





“Lekelani! Lekelani!” kumemeta Langa abaleka. Wetama kubhaca ngemuva kwesakhiwo lesidzala lesiseceleni nemgwaco, tinkhabi tamlandzela.



Langa wase ucabanga kubuyela kuVilakati.
Tinkhabi tamlandzela. Abegijima aloku
abuka emuva. Uma abuka, wakhandza kutsi
tinkhabi timbukile.





Uma tinkhabi tihlehla, wasukuma wagijima kakhulu. Masinyane wacabanga lisu. Wacela bangani bakhe labadzala kutsi babuyisele tinkhomo esibayeni.



Langa wehla esihlahleni.

Langa wabona kutsi tinkhabi atiyijabuleli indlela latiphatsa ngayo. Walandza emanti wawamikisa esibayeni, ahamba kancane. Tinkhabi tanatsa emanti. Wase uletsa nekudla. Tinkhabi tacala kudla.





Langa wema esangweni wakhuluma
netinkhabi ngekutitfoba nangenhlonipho.
Kusukela ngalelo lilanga, wacala kuphatsa
tinkhabi kahle.

Weluleka nalabanye belusi kutsi
baphatse kahle tilwane, ngenhlonipho
nangekunakekela.



Langa watsatsa tifundvo ngekunakekelwa kwetilwane. Wafundza lokunyenti ngetilwane, nekutsi kumele atiphatse njani. Lutsandvo lwakhe lwetilwane lwakhula. Wacala licembu lekunakekela tilwane. Waniketa nalabanye belusi tifundvo tekunakekela tilwane.

