



Swobo ya u qifhelela



Kedibone Tladi



Phuluso na Phambano vha khou sedza
zwiliwa khabodoni.

A hu na zwa u la.





Vha humbula nga ha maano a u ita zwa u la.



Vha ya murahu ha nngu, vha sedza miroho ngadeni.





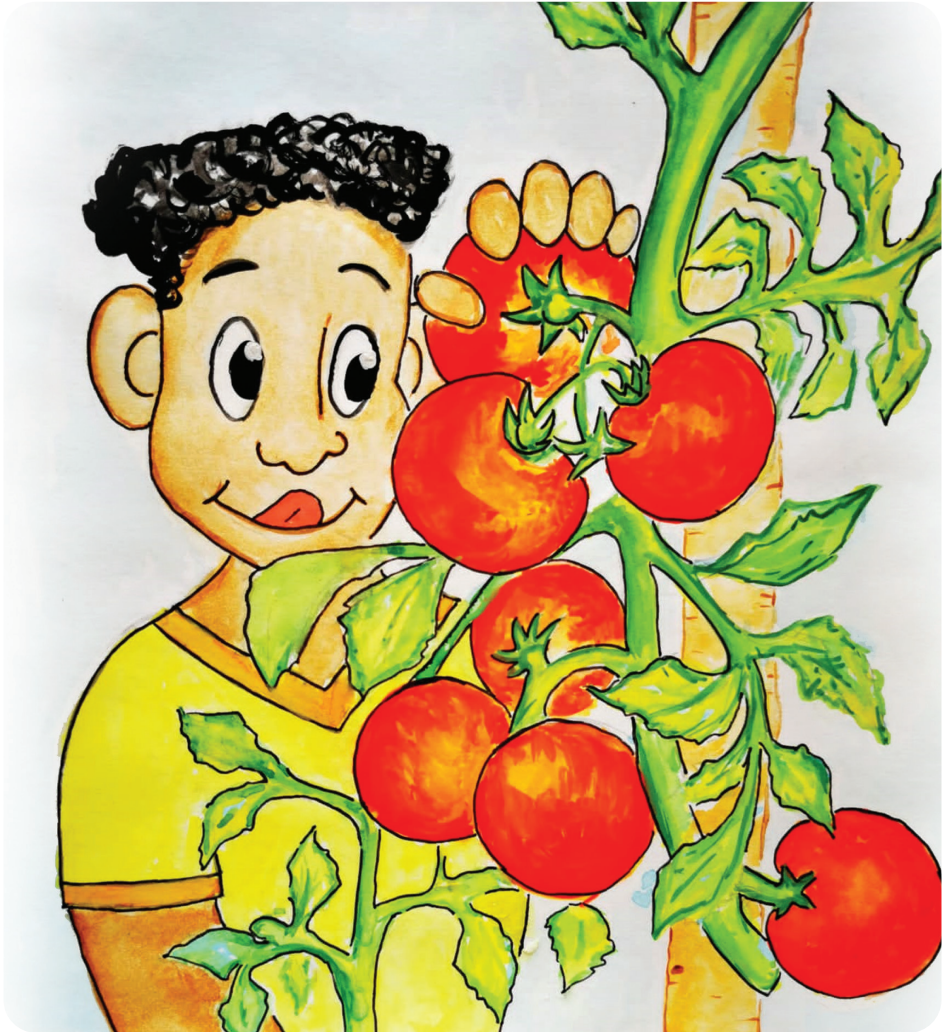
Ee, miroho yo vhibva.

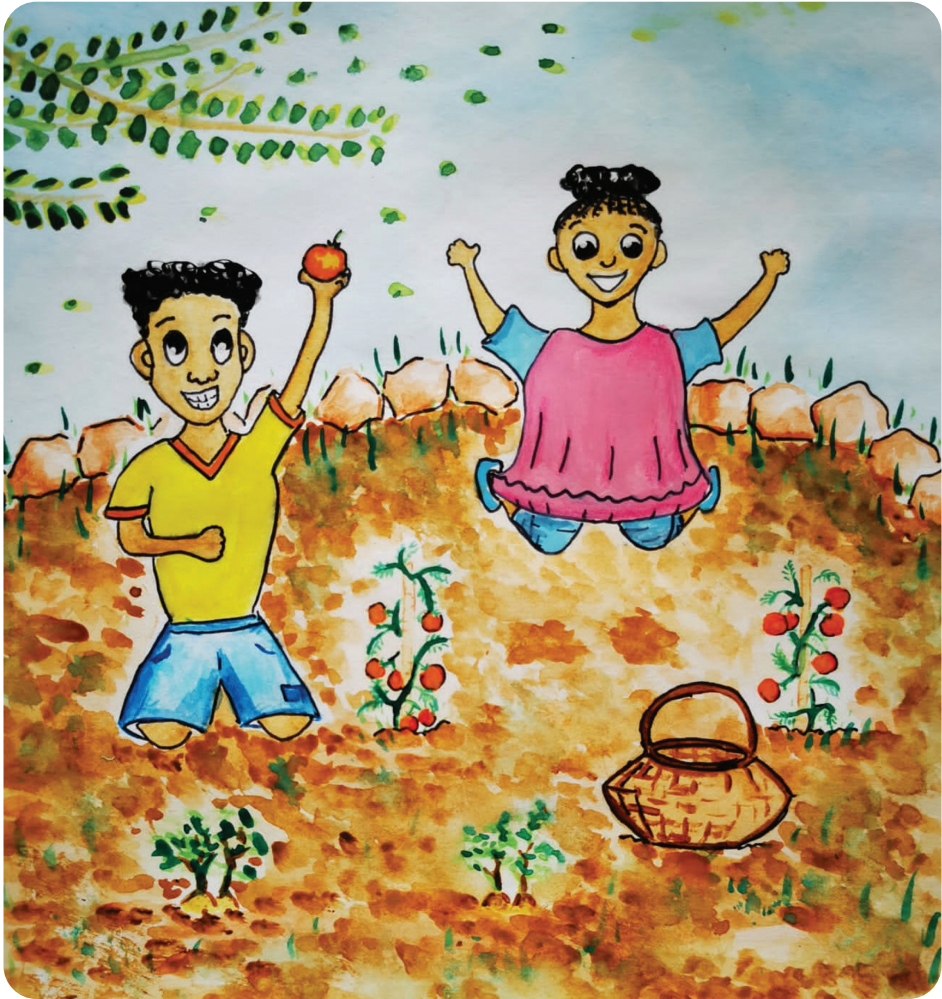
Miroho yo lugela mivhili yashu.



Vhana vha khou tshina musi vha tshi khou ka miroho.

Phuluso a ka maṭamaṭisi.





Phambano u khou tshina musi Phuluso a tshi
khou ka maṭamaṭisi.



Phambano a tupula maḡabula.





Phuluso u khou tshina musi Phambano a tshi
khou tupula maḡabula.



Phuluso a tupula nyala.

Phambano u khou tshina musi Phuluso a tshi khou tupula nyala.





Phambano na Phuluso vha khou bika swobo ya miroho.

Vhuvhili havho vha na vhudele, vho phumula na tafula.



Vha dzula fhasi vha ḡiphiḡa nga swobo ya miroho.

