



Phumo wa Lethabo



Mishumo Maphaha





Phumo ke mosetsana wa lethabo.

Phumo o thaba ge a bapala le sesi wa gagwe Phološo.

O thaba gape ge a bapala le katse ya gagwe ye tšhweu, Phodišo.





Phumo o thaba ge a le sekolong.

Ka phapošing o thaba ge morutiši a mo kgopela gore a balele kanegelo godimo.

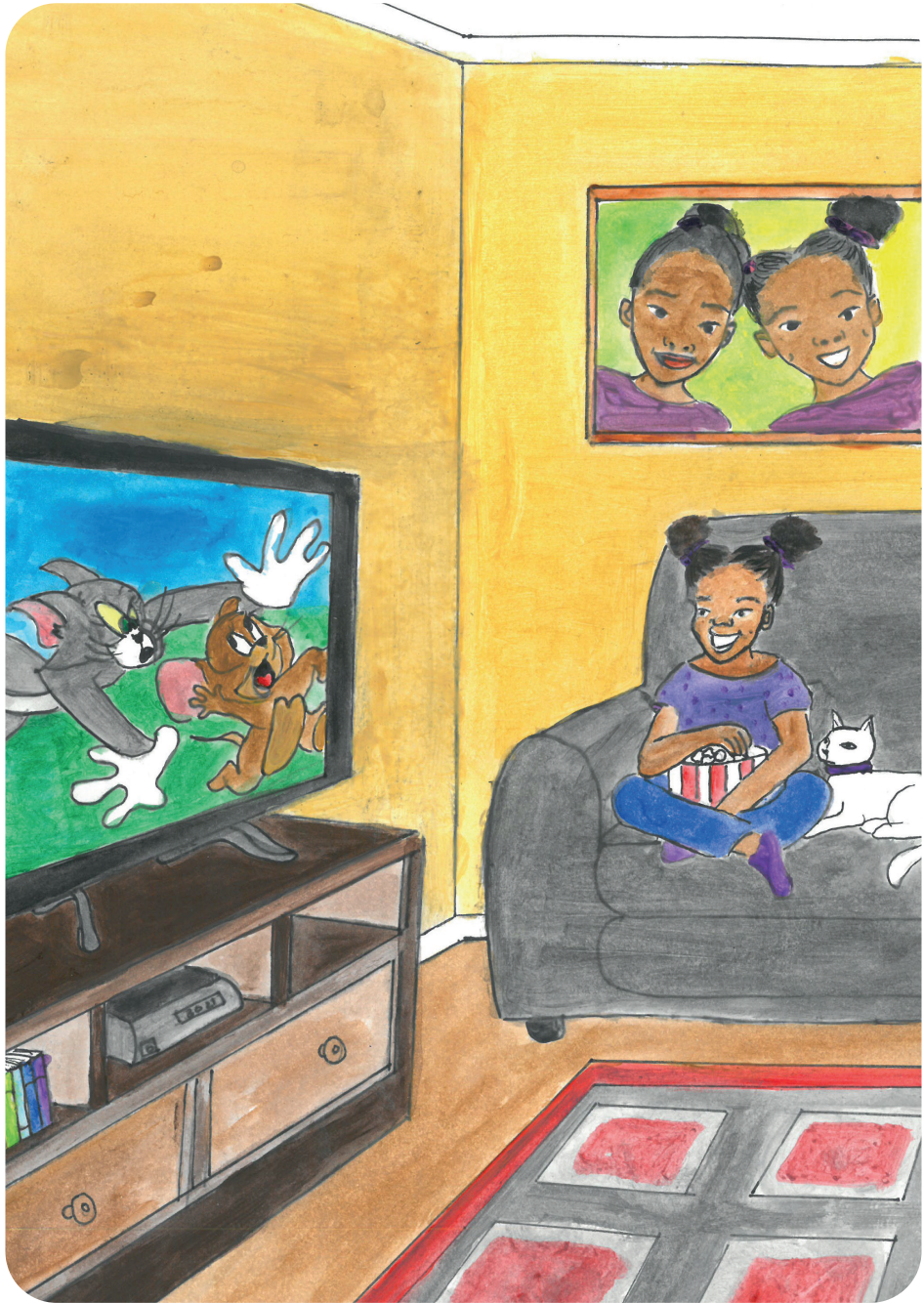




Phumo o thaba ge a bogetše dikhathunu.

Phodišo o bogela le yena.

Phumo o sega gore a hwe ka disego!





Phumo a thaba ge a le phakeng.

O rata go bapala ka meswinki.

Phumo o bona Phodišo godimo ga mohlare.





Phumo o thaba ge a eya mabenkeleng.

O thaba ge mma a mo rekela diaparo tše
botse.

Phumo le Phološo ba rata diaparo tša mmala
o mo phepole!

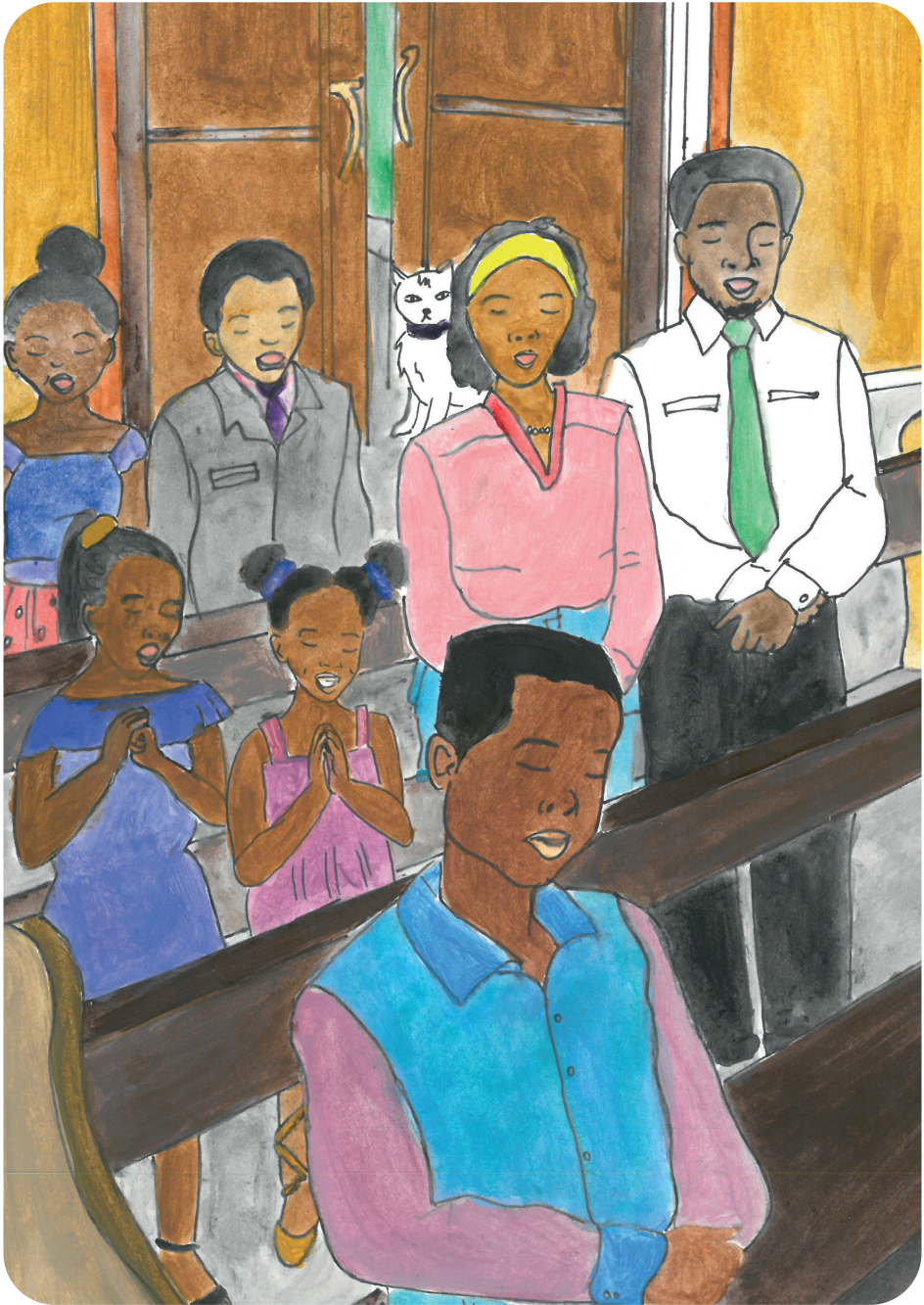




Phumo o thaba ge a le kerekeng.

O rata go opela le go rapela.

Phodišo ga e tsene, e mo emela mojako.





Phumo o thaba ge a e ja le ba lapa la gabo
ka LaMorena.

O thaba ge ba sola nama ya kgogo le raese.

Diego le yona e rata nama ya kgogo.





Phumo ke mosetsana wa lethabo e le ruri. O phela Bophelo bja lethabo!