



Matwetwe le dithuthupiši



Thembisile Ndala



Matwetwe le mpša ya gagwe Nwera ba dula
le mmane wa bona Seshego.

Matwetwe o rata Nwera kudu.





Matwetwe le Nwera ba raloka mmogo ka mehla.

Matwetwe o raga polo gomme Nwera a e nyaka!



Matwetwe o hlokometše Nwera kudu.

Matwetwe o fepa Nwera ka dijo le meetse a go nwa.

O kama boya ba Nwera gore bo dule bo le botse.





Maloba ge ngwaga o kgaoga, Matwetwe
le mmane Matwatwa ba be ba lebeletše e
dikhirikhete ka ntle.

Nwera o be a boifa kudu. Go be go na le
mašata le mabone a di kirikete. A utama ka
morago ga garetene.

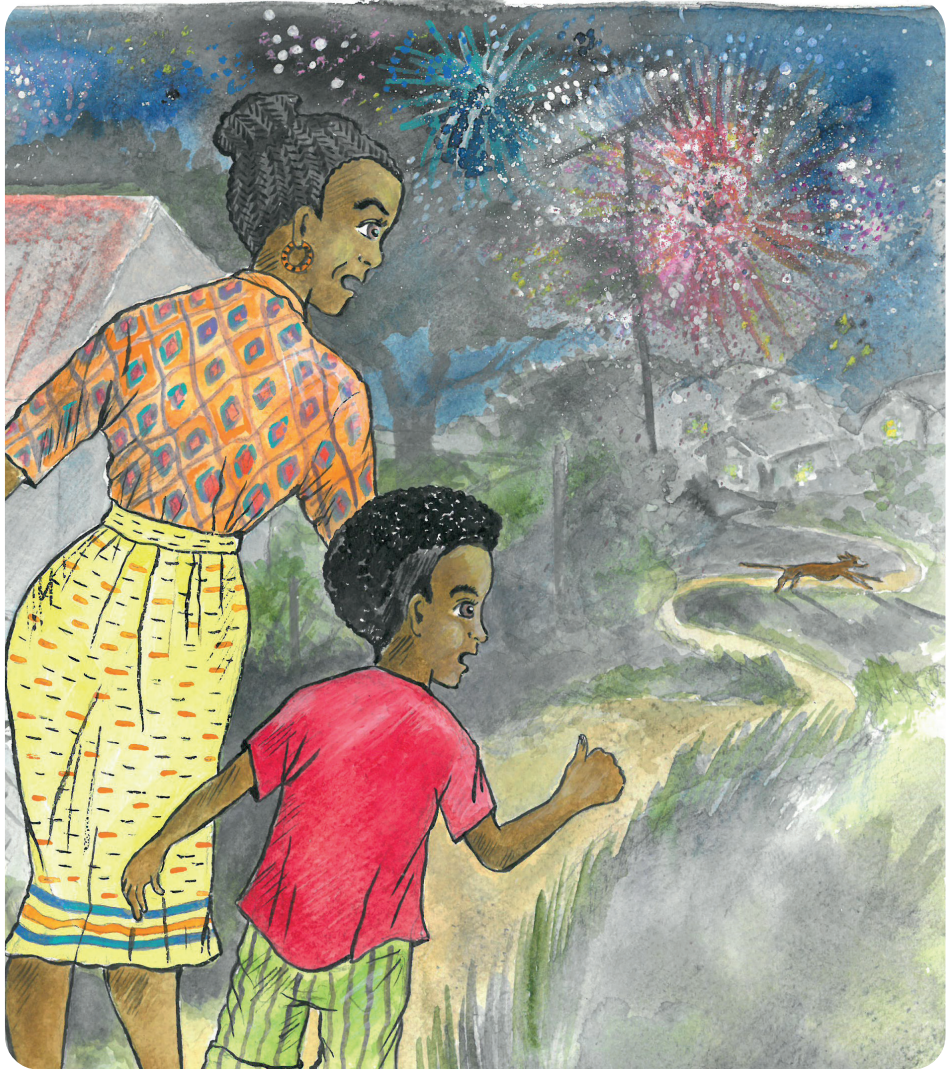




Ka morago gwa ba le lešata le legolo!

Nwera a boifa le go fetiša. A fofa a leba seferong.





“Boa, Nwera! Boa!” a realo Matwetwe.

Nwera a huhumela sefero a kitimela fase.



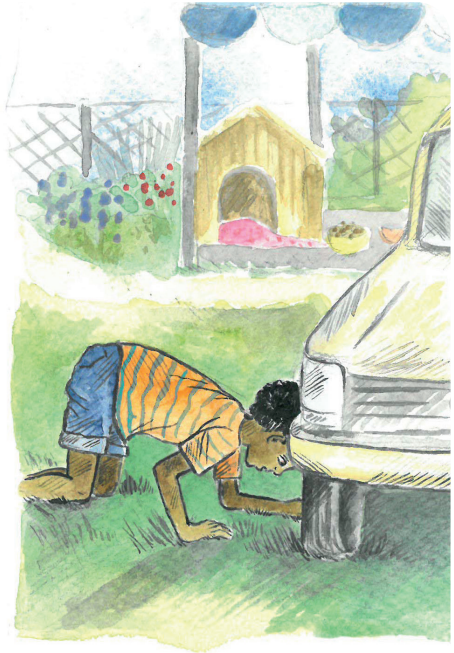
Letšatši le le latelago, Matwetwe a lebelela
Nwera .

A lebelela ka serapaneng.

A lebelela ka fase ga kolo.

A lebelela ka mafuri.

E fela Nwera ga a bonagale.





Bošego Matwetwe ga se a robala.

A rapela gore Nwera a boye gae a
bolokegile.





Matwetwe le mmame matwatwa ba dira dipolakate .

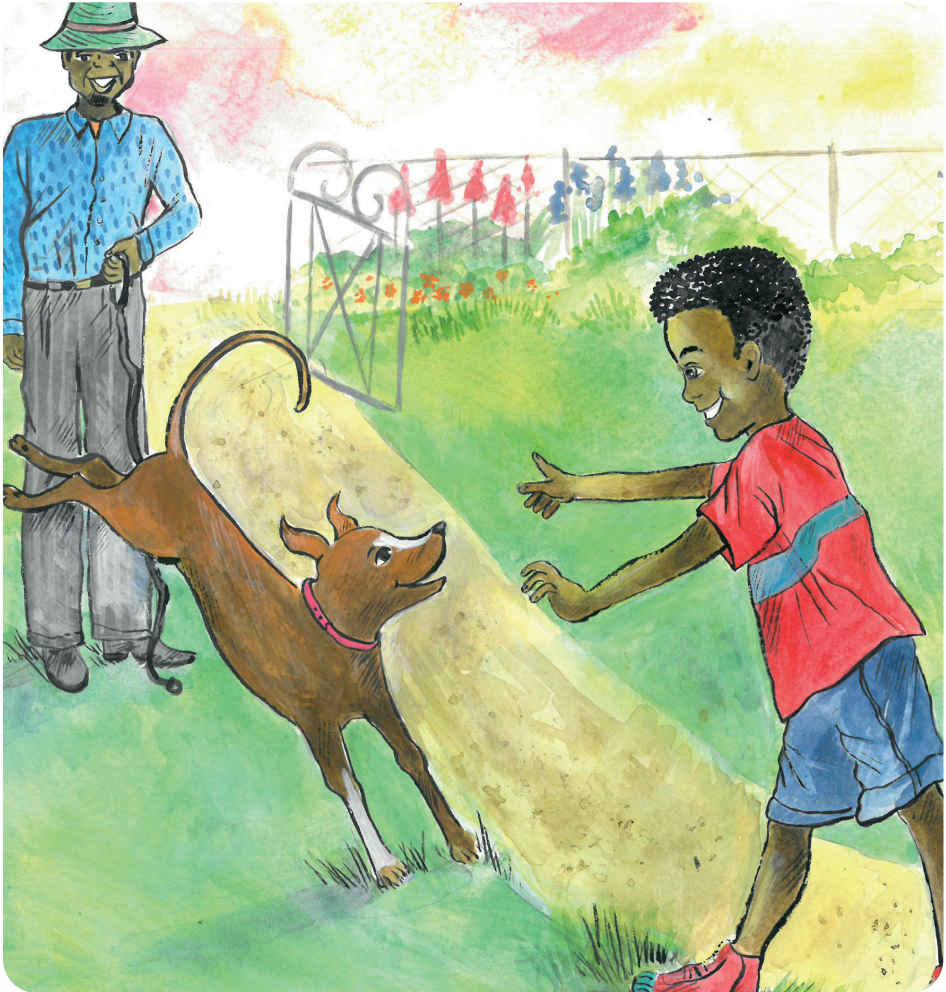
Ba bea di polakate mafelong ka moka mo Motseng wa Seshego.



Nwera a se boye gae.

Matwetwe o be a belaela e le ruri. Nwera o mo kae?" a ipotšiša. Ke duma gore o boye gae."





Lešatši le lengwe, Mmane a hwetša mogala.
Nwera o hweditšwe kgauswi le selaga!



Matwetwe le Nwera ba thabile go ba mmogo gape.

“Dikhirikhete ga tša lokela diphoofolo,” gwa realo Matwetwe.

“Hau! Hau” gwa dumela Nwera, a latswa Matwetwe.

