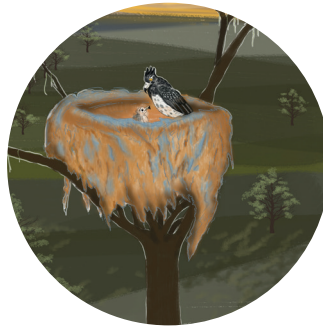




Sehlare sa phodišo



Phinah Ncube



Morweši ke Lenong le bohlale la senatla.
Morweši o fofa kua nokeng ya Lwamorwa.
O fela a fofa fofela mašemong a mabelethoro.
O fofa a nyaka dijo.





Morweši o lwalelwa ke morwa .

“Morwa wa ka o a lwala.” A realo a hloname.

O ngongorega ka bolwetši bja morwa wa gagwe.

”Ke dire eng?” Morweši o a nagana.



“Ke tla morwala ke mo iše go Morwalelwa.
Morwalelwa ke ngaka ya maleba.

Morwalelwa o tseba malwetši a mantši.”





Morwalelwa a hlahloba morwa wa Morweši.

“Bolwetši bjo bo kotsi,” Morwalelwa a realo.

“Bjale nka dira bjang?” Gwa botšiša Morweši.



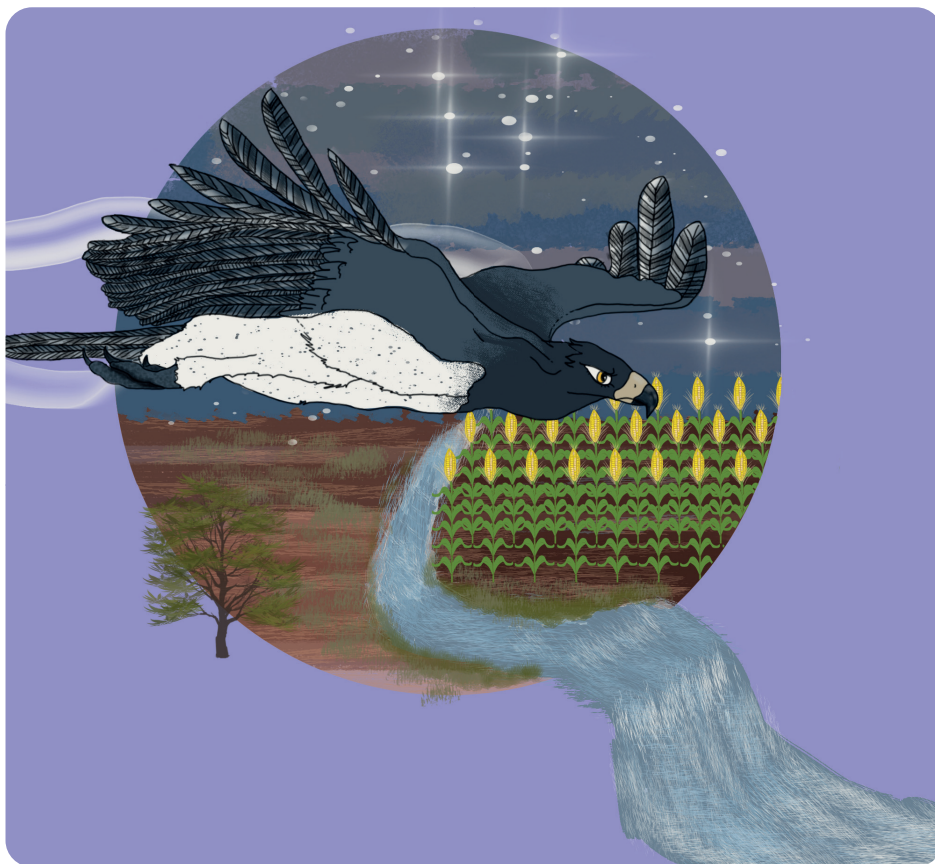
“Ditaba tše di bose ke gore, morwa o tla fola.

Go nyakega medu ya Sekanama.

Sehlare sa Sekanama se ka kua mašemong.”

Morwalelwa a realo a efa Morweši maele.





Morweši a fofela mašemong ka lebelo.

Morweši o rile a sa fofa mašemong, a bona mohlašana.

A nagana go re ke Sekanama.

O rile ge a kotama, a lemoga gore ga se sona.

A fetela pele.



Molwedi tšie ya fofela lwaleng ya botšiša, “O nyaka eng mo”?

”Sekanama,” gwa realo lenong.

Molwedi a fofa, Morweši a mo šala morago.





“Agaa! Morwa wa ka o tla fola lehono!”



“Ke humane sehlare sa bolwetši bjo.”

A thoma go goga sehlare go nyaka medu.

Mabu a be a omile fase go thathafa.



Morweši a lwa lego goga Sekanama.

Molwedi a re, “E tla ke go thuše.”

Morweši a lebelela Molwedi ka lenyatšo.

Morweši le Molwedi ba epa sehlare mmogo.





Thoso! Morweši a wa, a kanama le sekanama.

Morweši a goga sekanama ka dinala.



Molwedi a kgokologa ka disego.



Ka ponyo ya leihlo, Morweši a tsoga.

A fofa ka lebelo a thabile.

Morweši a fofela gae le sekanama.





Molwedi a šala a maketše.

“Ijoo! Morweši ga a na tebogo.” Tšie ya fofa ya sepela.



Morweši a fihla ga ngaka Morwalelwa. A apea sekanama. A se tlogela sa fola. Morweši a swara morwa a mo gamodiša sona.





Morwa wa Morweši a gamola sehlare a fola.

Morwa wa Morweši a tsoga malaong.

A fofafofa ka lethabo.



”Ijoo! Ke lebetše go leboga Molwedi.” Morweši a
realo. Morweši le morwa ba fofela mašemong.

Ba humana Molwedi ba mo leboga.

