

# Sehlare sa phodišo

Sepedi

kgato

3A



Phinah Ncube



## **Ditlhaka (poeletšo)**

nn, rr

## **Ditlhaka tše diswa**

rw, lw

## **Sehlare sa phodišo**

**Sepedi**

**kgato 3A**

ISBN: 978-1-77981-202-5

© 2023 Ulwazi Lwethu African Languages Literacy Project

Mongwadi: Phinah Ncube

Moswantšhi: Manushri Naidoo

Tlhagišo le Kalo: Rock Bottom Graphic & Design

Kgatišo ya mathomo 2023

# Sehlare sa phodišo



**Phinah Ncube**

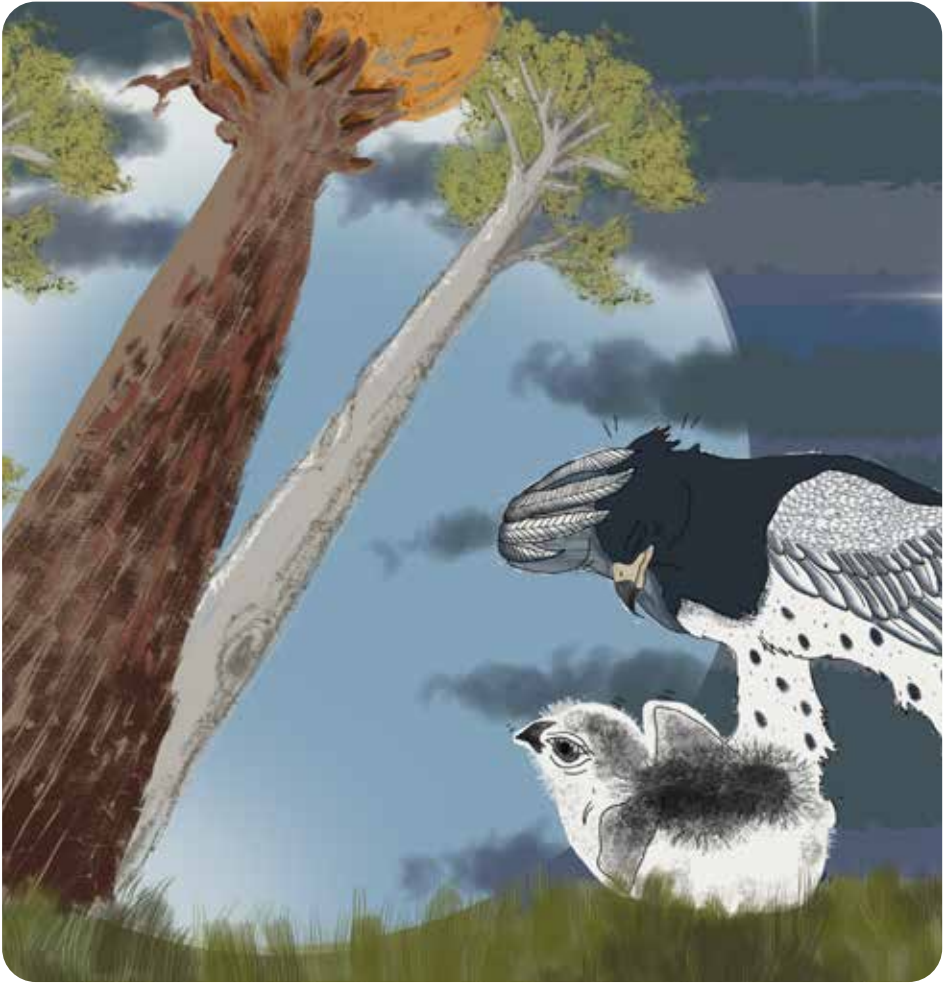
Morweši ke Lenong le bohlale la senatla.

Morweši o fofa kua nokeng ya Lwamorwa.

O fela a fofa fofela mašemong a mabelethoro.

O fofa a nyaka dijo.





Morweši o lwalelwa ke morwa .

“Morwa wa ka o a lwala.” A realo a hloname.

O ngongorega ka bolwetši bja morwa wa gagwe.

”Ke dire eng?” Morweši o a nagana.

“Ke tla morwala ke mo iše go Morwalelwa.  
Morwalelwa ke ngaka ya maleba.

Morwalelwa o tseba malwetši a mantši.”





Morwalelwa a hlahloba morwa wa Morweši.

“Bolwetši bjo bo kotsi,” Morwalelwa a realo.

“Bjale nka dira bjang?” Gwa botšiša Morweši.

“Ditaba tše di bose ke gore, morwa o tla fola.

Go nyakega medu ya Sekanama.

Sehlare sa Sekanama se ka kua mašemong.”  
Morwalelwa a realo a efa Morweši maele.







Morweši a fofela mašemong ka lebelo.

Morweši o rile a sa fofa mašemong, a bona mohlašana.

A nagana go re ke Sekanama.

O rile ge a kotama, a lemoga gore ga se sona.

A fetela pele.

Molwedi tšie ya fofela lwaleng ya botšiša, “O nyaka eng mo”?

”Sekanama,” gwa realo lenong.

Molwedi a fofa, Morweši a mo šala morago.



“Agaa! Morwa wa ka o tla fola lehono!”



“Ke humane sehlare sa bolwetši bjo.”

A thoma go goga sehlare go nyaka medu.

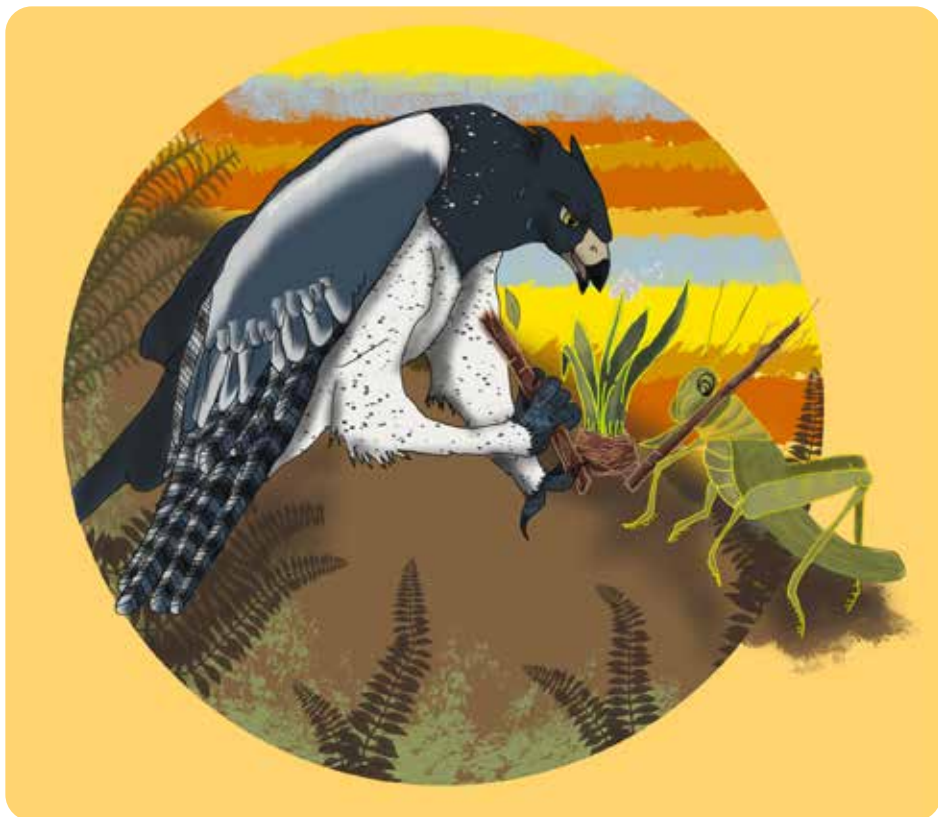
Mabu a be a omile fase go thathafa.

Morweši a lwa lego goga Sekanama.

Molwedi a re, “E tla ke go thuše.”

Morweši a lebelela Molwedi ka lenyatšo.

Morweši le Molwedi ba epa sehlare mmogo.



Thoso! Morweši a wa, a kanama le sekanama.

Morweši a goga sekanama ka dinala.



Molwedi a kgokologa ka disego.

Ka ponyo ya leihlo, Morweši a tsoga.

A fofa ka lebelo a thabile.

Morweši a fofela gae le sekanama.





Molwedi a šala a maketše.

“Ijoo! Morweši ga a na tebogo.” Tšie ya fofa ya sepela.

Morweši a fihla ga ngaka Morwalelwa. A apea sekanama. A se tlogela sa fola. Morweši a swara morwa a mo gamodiša sona.







Morwa wa Morweši a gamola sehlare a fola.

Morwa wa Morweši a tsoga malaong.

A fofafofa ka lethabo.

”Ijoo! Ke lebetše go leboga Molwedi.” Morweši a realo. Morweši le morwa ba fofela mašemong.

Ba humana Molwedi ba mo leboga.





**Ulwazi  
Lwethu**

**Readers**

### **Kgato 1**

- Namune e nanana
- E ba bonolo  
Malebo
- Sebati le Segokgo
- Kamo o rata go  
penta
- Mollo
- Pokolo
- Lebile o a  
emaema
- Pula ya Semaka
- Go bala meropa
- Komelelo
- Yuna o gobetše
- Noga!
- Meriri e megolo
- Lerato la Gabo le  
Roro
- Di ka fofa?
- Bana ba go ba le  
mohola
- Sopo e bose
- Basetsana ke  
Badiši
- Yuna o maketše
- Jobe ga a robale
- Ba ka Polaseng
- Tate o tla boa  
neng?
- Lerato la  
mafahlana
- Jase e Fetogile

### **Kgato 2**

- Tsatsa wa šedi
- Go seketša  
meetse
- Meetse a ka mo le  
ka mo
- Monyai wa  
mathaithai
- Šibelane sa  
Tinyiko
- Roko ya  
Mebalabala
- Tatso ya dijo tša  
baVenda
- Bula, Tswalela,  
Tšweletša
- Dieta tša Phuthi  
tše diswa
- Leseka la gauta
- Sebapadi sa  
Maemo
- Tšalatšala wa  
sengangele
- Kakanyo ye botse  
ya Mmira
- Dimpho
- Bolo e timetše
- Mmutla wa  
mahlajana

### **Kgato 3**

- Sehlare sa  
Phodišo
- Kwena ya leswena
- Molemi Morweši le  
dikgabo
- Matwetwe le  
dithuthupiši
- Bose bja motepa
- Bophelo bja  
segwagwa
- Motswako o  
bohlokwa
- Mohlafi wa mogale
- Mothei wa dihlapu
- Ga ke rate merogo
- Ke tše kgolo go  
nna!
- Dipoo di a  
Itefeletša
- Mosetsana yo  
mabjoko
- Mehuta ya  
dinamelwa
- Seeta se se botse
- Dinose
- Bašimane ba  
bohlale
- Go fetoga
- O a hlobaela
- Setswalle sa nnete
- Bolwetši bja  
mpshikela

### **Kgato 4**

- Phumo wa lethabo
- Ba bapala
- Molatladi wa  
Lerato
- Setšo sa baVenda
- Tumo ya ga Moori  
ya phethagala
- Bolwetši bja  
dikolobe
- Ntombi o swara  
lehodu
- Pule o tliša mmele
- Tate molaodi  
wa serapa sa  
diphoofolo

### **Kgato 5**

- Go thuša Rakgolo  
go fola
- Mae a Kgarebong  
a timela
- Mama Afrika,  
Miriam Makeba
- Kgaugelo o tseba  
nako
- Peu ya mehlolo
- Re etela lešoka la  
diphoofolo
- Mehlaro ya Afrika  
Borwa
- Toro ya ga  
Dimpho

**ZENEX**  
FOUNDATION

**MOLTENO**  
INSTITUTE FOR LANGUAGE AND LITERACY  
EST. 1974



Ulwazi Lwethu ke projeke ye e tšweletšwago le go hwetša thušo ya mašelang go tšwa go Mokgatlo wa Zenex ka maikemišetšo a go tšweletša dingwalwa tšeo di tlo go šikinya maikutlo a babadi ba maleme a se Afrika. Maikemišetšo a projeke ye ke go ruta le go thekga bana ba mephato ya fase go bala ka kwišišo. Dingwalwa tše di ngwadilwe ka dipolelo tše senyane tša Afrika ka tirišanommogo le Molteno Institute for Language and Literacies, Nelson Mandela Institute for Education and Rural Development, Room to Read South Africa, le Saide. Methopo ka moka e tšweleditšwe e le “Open Education Resources” (OER).

Please visit our website to download the full copy of this reader:  
[ulwazilwethu.org.za](http://ulwazilwethu.org.za)



Creative Commons Attribution-  
NonCommercial-NoDerivatives  
(CC BY-NC-ND) 4.0  
International Licence

Disclaimer: You are free to download and  
share this work as long as you attribute  
Zenex Foundation, but you may not change  
this work in any way or use it commercially.

