



Phatso o Thabile!



Mishumo Maphaha





Phatso ke ngwanana ya thabileng.

O thaba ha a bapala le ausi wa hae Phephi.

O thaba ha a bapala le katse ya hae e
tshweu, Phatha.





Phatso o thabile ha a le sekolong.

O thabile ha mosuwe a mo kopa ho balla
pale hodimo ka phaposing.

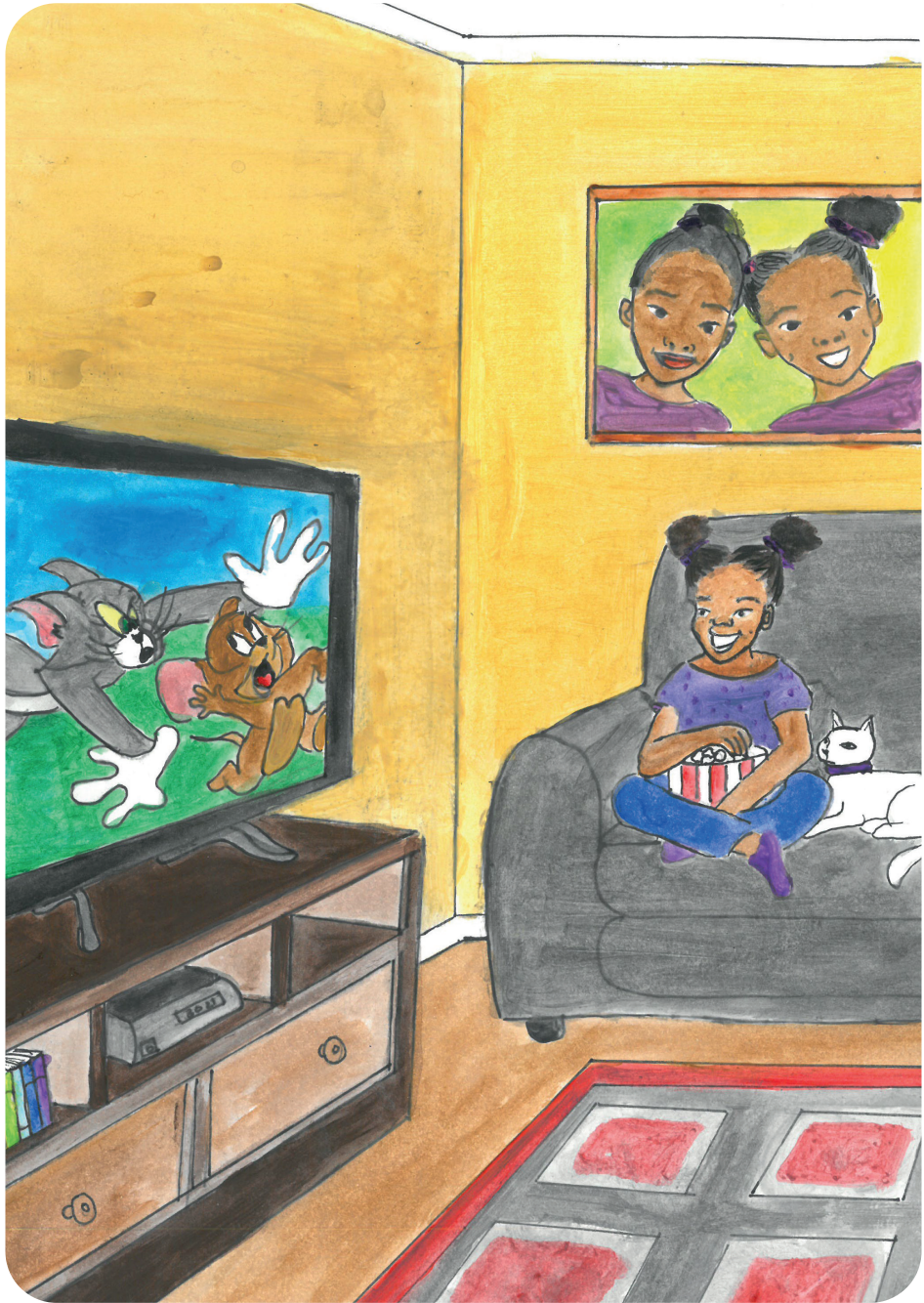




Phatso o thabile ha a bohile dikhathunu.

Phatha o bohela le yena.

Phatso o tsheha a be a keketehe!





Phatso o thabile lebaleng ha a le pakeng.

O rata ho bapala meswinking.

Phatso o kgona ho bona Phatha sefateng.





Phatso o thabile ha a e ya mabenkeleng.

O thabile ha mme a mo rekela diaparo tse ntle.

Phatso le Phephi ka bobedi ba rata mmala o phepole!!



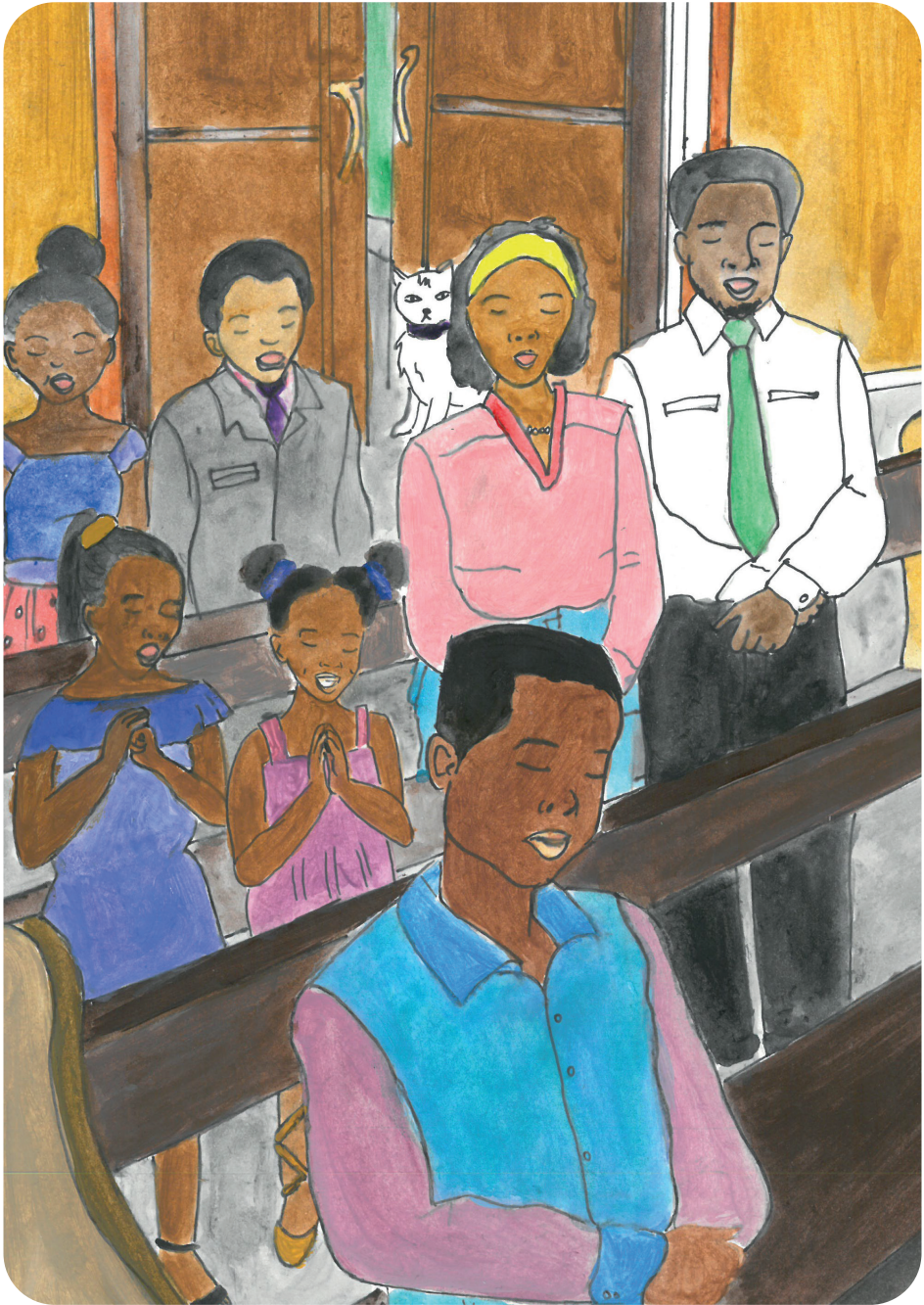


Phatso o thabile ha a le kerekeng.

O rata ho bina le ho rapela.

Phatha yena ha a kene ka kerekeng.

O mo emela monyako.





Phatso o thabile ha lelapa la habo le eja mmoho ka diSontaha.

O thaba haholo ha ho jewa nama ya kgoho le raese.

Phatha le yena o rata nama ya kgoho haholo.





Phatso ke ngwanana ya thabileng ka nnete.

O phela bophelo bo tletseng thabo!