



Manwa le ditlelabore



Thembisile Ndala





Matwetwe o rata Manwa haholo

Matwetwe le boraki ba hae Manwa, ba dula
ha Rakgadi wa hae Gauteng.

Matwetwe o rata Manwa haholo





Matwetwe le Manwa ba bapala mmoho ka mehla.

Matwetwe o raha bolo, e latwa ke Manwa.



Matwetwe o baballa Manwa.

Matwetwe o fepa Manwa le ho e fa metsi a ho nwa.

O todisa Manwa hore e dule e rateha, e phetse hantle.





Matwetwe le rakgadi ba ne ba le kantle, ba shebeletse ditlalebone ha selemo se kgaoha.

Manwa e ne e tenwa ke lerata le kganya ya ditlalebone. E ne e ipatile ka mora kgaretene.

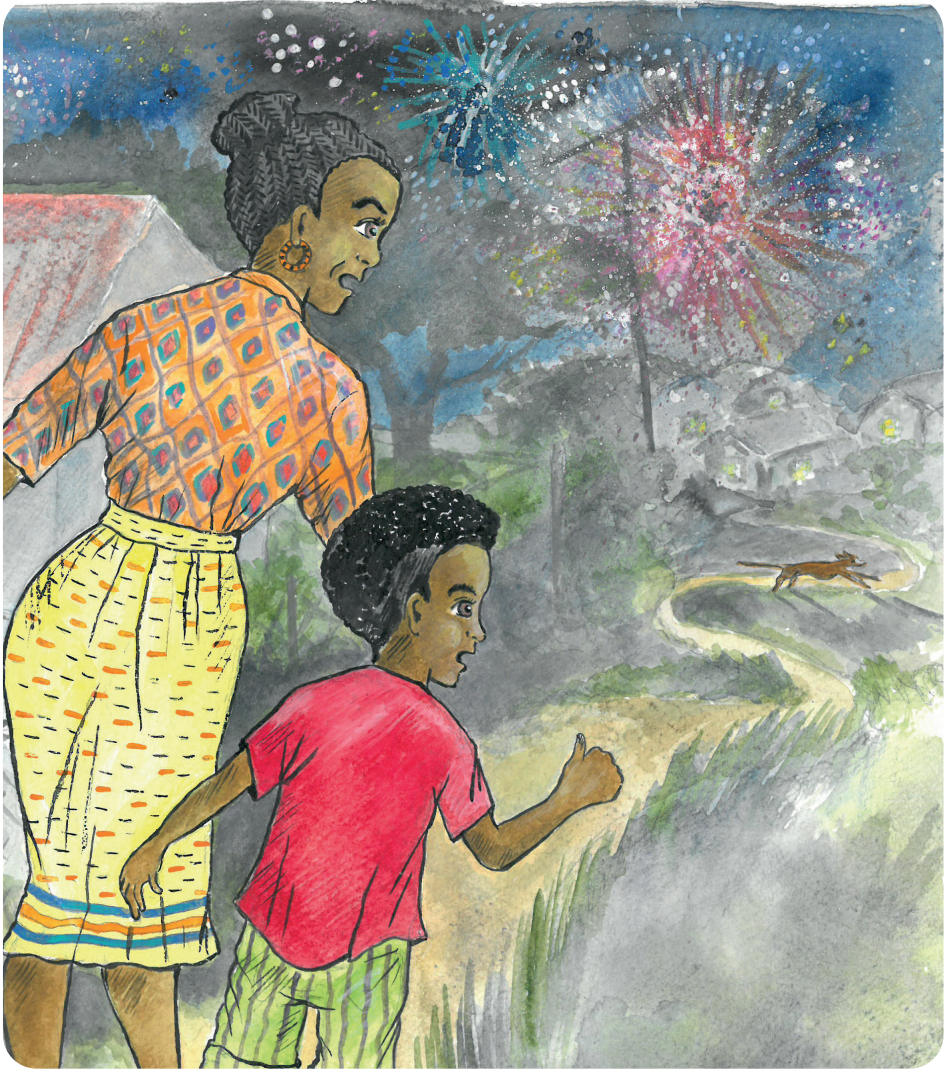




Kapele ha tla modumo o moholo. Twakga!

Manwa ya thothomela ya tshoha, ya tlolela
hodimo, ya matha ho sutha ka tlung ntlong.





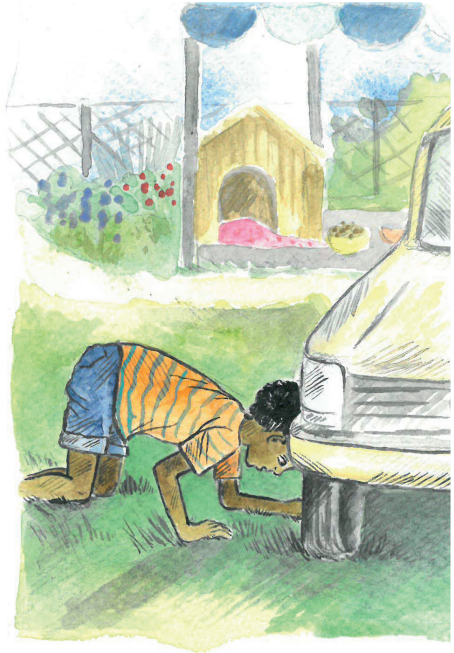
“Boya, Manwa!” Ke Matwetwe, o a hoeletsa.

Manwa ya ipetsa heheng, ya kga ka lebelo
ho baleha.



Letsatsi le latelang, Matwetwe a batla Manwa hohle.

A sheba ka serapeng sa meroho. A sheba ka tlasa koloi. A sheba seterateng. Empa Manwa e ne e le siyo, e ile.





Bosiung boo, Matwetwe o ne a saretswe haholo.

A rapela hore Manwa e kgutle kapele.





Matwetwe le rakgadi ba etsa qeto ya ho etsa *dipolakate* tse ka thusang hore Manwa e fumanehe.

Ba hloma dipolakate hohle tikolohong ya bona.

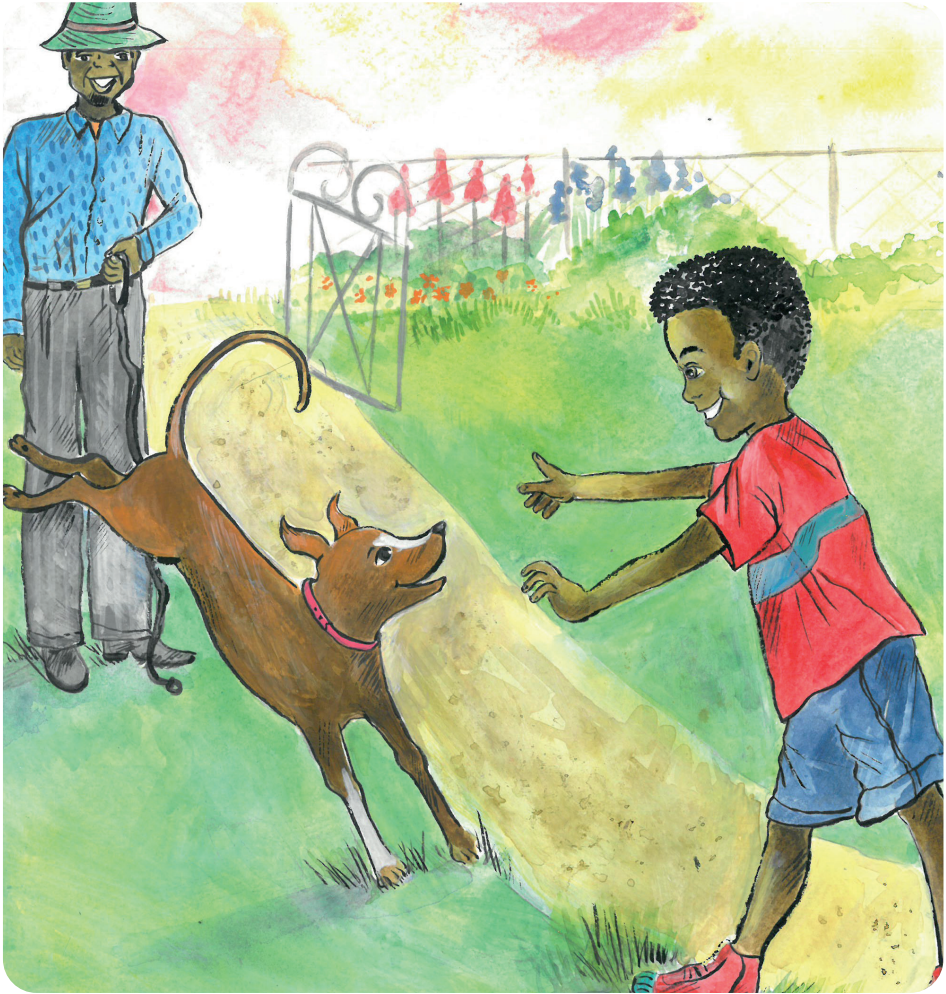


Empa Manwa ha e a ka ya kgutla.

Matwetwe o ne a hlorile.

“Manwa e kae?” a ipotsa. “Ke lakatsa eka e ka kgutlela hae.”





Yaba ka letsatsi le leng rakgadi o fumana mohala.

Manwa e fumanwe haufi le selakga.



Matwetwe le Manwa ba thabile ho boela ba ba mmoho hape.

“Ditlelabore ha di a loka.” Ke Matwetwe eo.

“Haau!” Ke Manwa, e nyeka Matwetwe.

