



Phatso o itumetse



Mishumo Maphaha





Phatso ke mosetsana yo o itumetseng.

O itumela fa a tshameka le ousi wa gagwe
Pholoso.

O itumela fa a tshameka le katse ya gagwe e
tshweu, Phopho.





Phatso o itumela fa a le kwa sekolong.

O itumela fa morutabana a mo kopa go
buisetsa kgang kwa godimo.

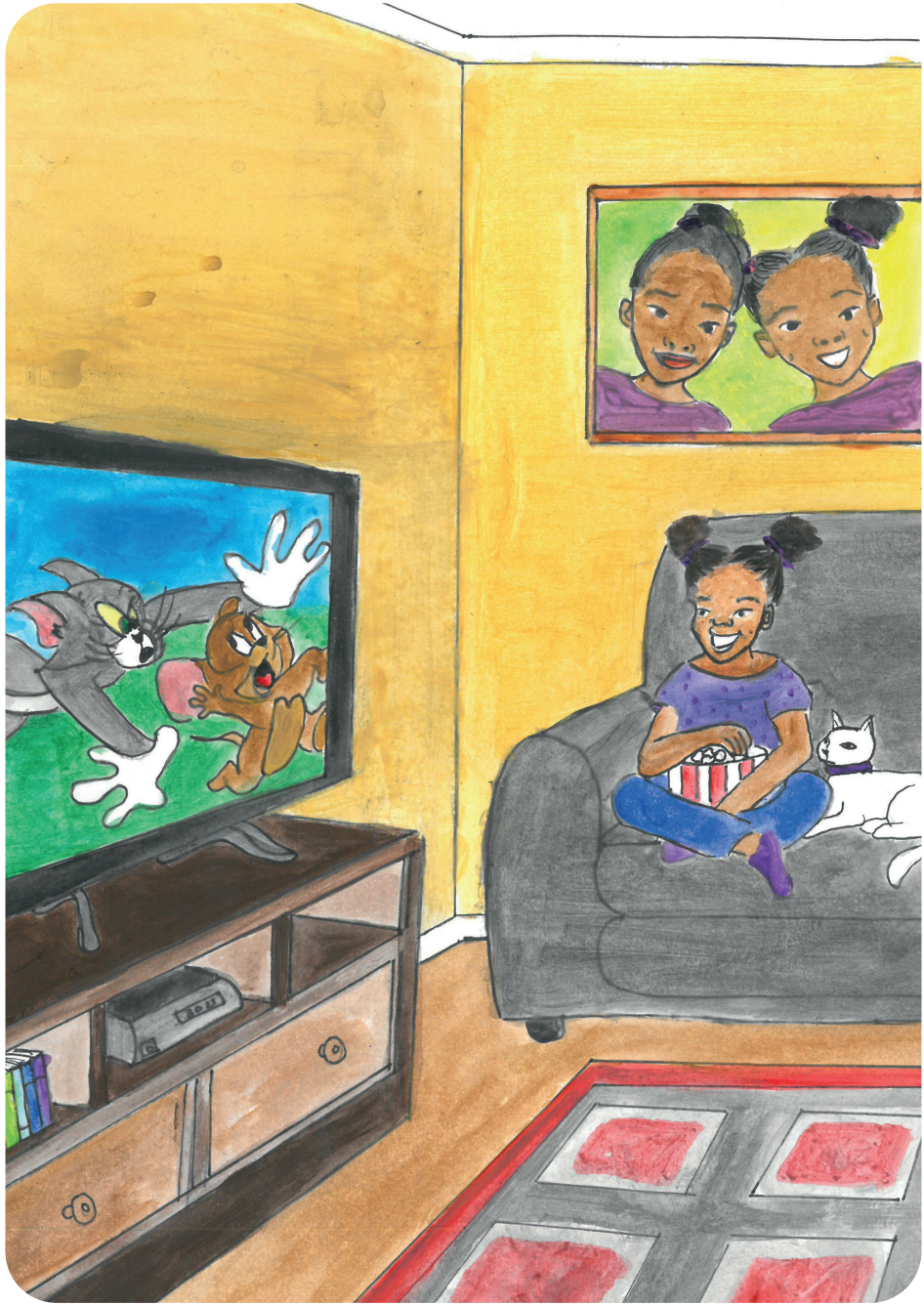




Phatso o itumela fa a bogetse dikhhunu.

Phopho o lebelela le ene.

Phatso a tshega a be a tshega!





Phatso o itumetse kwa phakeng.

O rata go tshameka meswinki.

Phatso o bona Phopho mo setlhareng.





Phatso o itumela fa a ya marekelong.

O itumela fa mme a mo rekela diaparo tse di ntle.

Phatso le Pholoso ba rata mmala o mophepole.

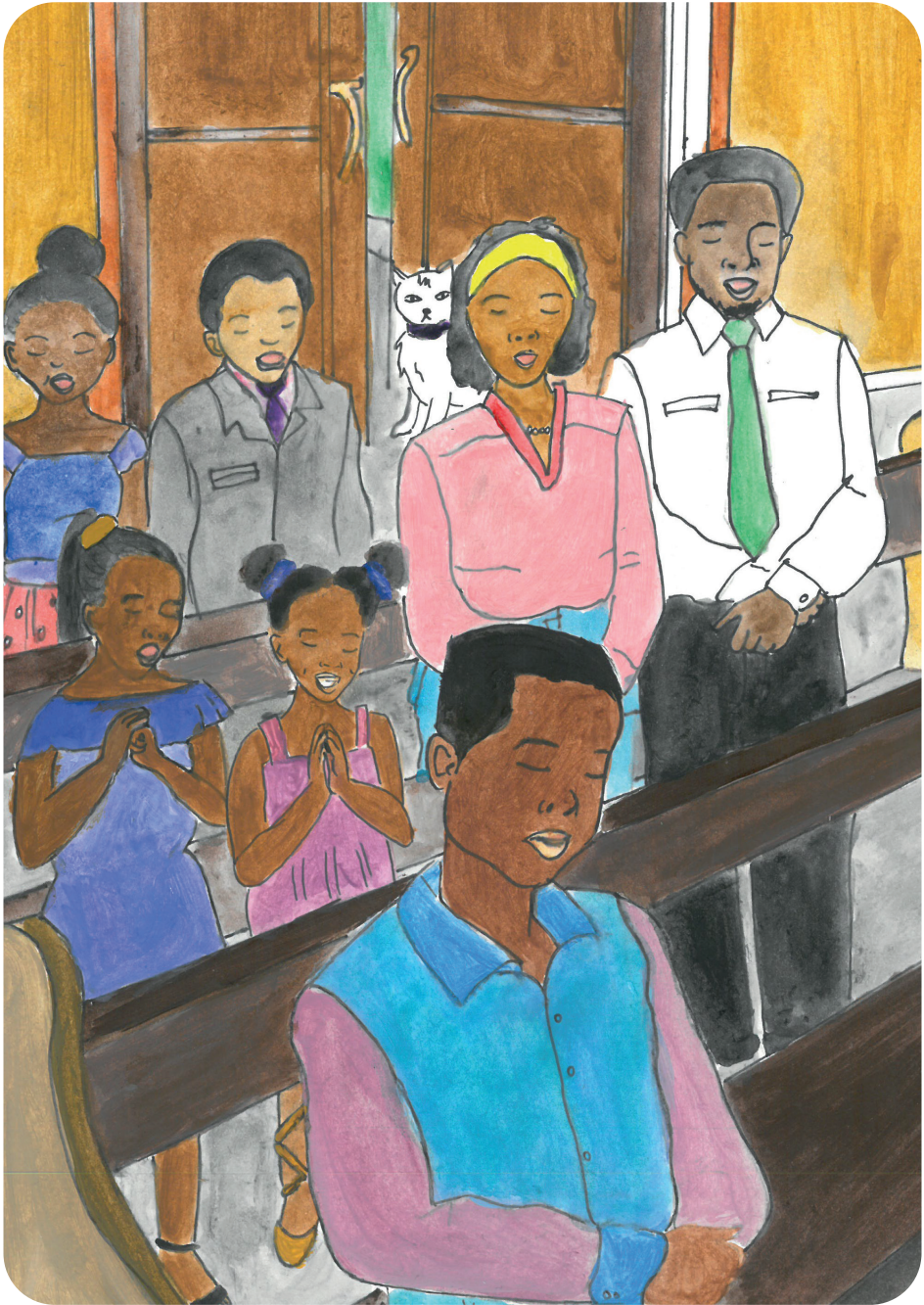




Phatso o itumela fa a le kwa kerekeng.

O rata go opela le go rapela.

Phopho ga a tsene, o mo emela fa mojako.





Phatso o itumela fa ba lelapa ba ja mmogo
ka Latshipi

O itumelela go ja reisi le nama ya koko.

Phopho le ene o rata nama ya koko.





Phatso ke mosetsana yo o itumetseng e le ruri!