



# **Nomadlakadlaka lonesibindzi!**



**Pumeza Ngobozana**





Endzaweni lekhashane epulasini, bekuhlala lintjwele lenkhukhu lebelingaketayeleki. Belihlukile kuwo onkhe emantjwele.

Kunekutsi tinsiba talo tiluleke tikhatimule, talo betifiphele timadlakadlaka. Linentsamo lengenatinsiba, imilente yalo beyinetinsiba.





Libito lalelintjwele bekunguNomadlakadlaka,  
libitwa ngetinsiba talo letimadlakadlaka.  
Lamanye emantjwele abebitwa ngemibala yawo.  
Nomadlakadlaka abelitsandza libito lakhe ngobe  
belihlukile, kumenta ative akhetsekile.



Lamanye emantjwele abengafuni kudlala  
naNomadlakadlaka.

“Timbi tinsiba takho, ngisho nelikamo ngeke litelule!”

“Singadlali naye, Nginesiciniseko kutsi uyanuka  
futsi unemakhatane!” kusho Mhloshana, lonetinsiba  
letimhloshana, futsi lamanye emantjwele amsandza.  
Atsandza kumlandzela shengatsi uyabahola.





Abenesitunge kakhulu Nomadlakadlaka ngobe abehlala namake wakhe kuphela.

Make abemkhutsata kutsi adlale nalabanye kute bametaye. Loku bekumatima kuNomadlakadlaka ngobe emantjwele bekabaleka uma asondzela kuwo.



Abenesitunge kakhulu Nomadlakadlaka ngobe abehlala namake wakhe kuphela.

Make abemkhutsata kutsi adlale nalabanye kute bametaye. Loku bekumatima kuNomadlakadlaka ngobe emantjwele bekabaleka uma asondzela kuwo.





“Ngingatibamba ngitive tinsiba takho?” kubuta Mushi. Nomadlakadlaka wanikina inhloko, wavumela Mushi kutsi eve tinsiba takhe. Mushi akamange akholwe lakuvako! Tinsiba taNomadlakadlaka betitsambile tifana netakhe, futsi betinganuki njengobe abevile.



Kusukela ngalelo lilanga, laba lababili  
bangasahlukani. Kwekucala emphilweni yakhe,  
Nomadlakadlaka waba nemngani . Kwamjabulisa  
loko.



Lamanye emantjwele ababuka ngemona uma  
badlala, bacoshisana, batingela imisundvu  
nalokunye kudla, bahleka kakhulu. Abemangele  
ngalobungani.





Ngalelinge lilanga uma Nomadlakadlaka naMushi basadlala esigangeni, Lusoti lonelunya waphaphela dvute nalapho lamantjwele lamabili adlala khona. Wasondzela dvute kakhulu aphapha etulu kwabo. Mushi abetfuke kakhulu. Nomadlakadlaka watjela umngani wakhe kutsi akakhululeke ngobe yena akamesabi kuLusoti lonelunya.





Lusoti wavula tidladla takhe letindze, letingcolile, alungiselela kuhlwitsa Mushi. Kepha Nomadlakadlaka wema emkhatsini wemngani wakhe naLusoti.



Nomadlakadlaka waphaphatelisa timphiko takhe, wanikina tinsiba takhe letimadlakadlaka. Wabuka Lusoti ekhatsi emehlweni. “Uligwala! Kungani wetfuse emantjwele langete akwati kutilwela? Tsatsa mine; angikwesabi! Hamba usiyekele!” washo acosha lusoti ngetimphiko takhe letincane.



Lusoti akazange akholwe tindlebe takhe. Waphapha masinyane, atfukile ngobe akumange kube nelintjwele lelake lamelana naye ngaloluhlobo.





Lamanye emantjwele abebukela konkhe loku abhacile futsi atfukile, kepha ajabulile ngesibindzi saNomadlakadlaka. Abengatsembi indlela lafake ngayo imphilo yakhe enkhangeni wasindzisa umngani wakhe.



“Ngiyabonga kungisindzisa kuLusoti mngani wami,”  
kusho Mushi.

“Bangani benta njalo!” Kusho Nomadlakadlaka  
amamatseka.

“Kungani wena ungamesabi kuLusoti?” kubuta  
Mushi.



“Ngicabanga kutsi tinsiba tami letimadlakadlaka  
tinemilingo!” Bangani lababili bahleka.

Nomadlakadlaka abejabulile kutsi wehlukile  
kulabanye.



Ngelilanga lelilandzelako, onkhe emantjwele  
eta kuNomadlakadlaka naMushi, aholwa  
nguMhloshana, umholi wawo.

“Ngicela kuba ngumngani wenu nami,” kucela  
Mhloshana.



Mushi wabuka Nomadlakadlaka, lowamamatseka  
watsi, “Yebo! Ungaba ngumngani wetfu.”

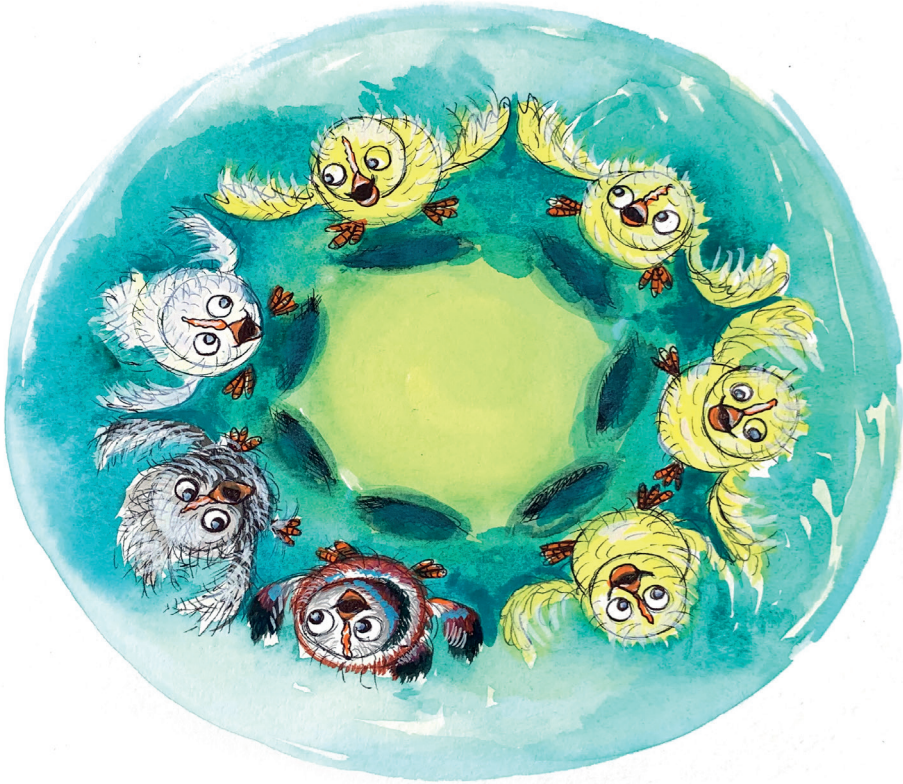
“Ngiyacolisa ngato tonkhe tintfo letikhohlakele  
naletingemanga lesitishilo ngawe,” kusho  
Mhloshana.

Nomadlakadlaka wavuma ngenhloko.



Kusukela ngalelo lilanga, onkhe emantjwele  
abedlala ndzawonye.

Nomadlakadlaka wabafundzisa kuphephetelisa  
timphiko tabo banyakatise tinsiba kute bativikele  
kuLusoti.





Lusoti akamange asabahlupha futsi ... mhlawumbe waya kulamanye emapulasi.



Nomadlakadlaka wangasabi nesitunge. Lamanye emantjwele ayekela kumbita ngemagama, acala kumbita ngaNomadlakadlaka lonesibindzi!