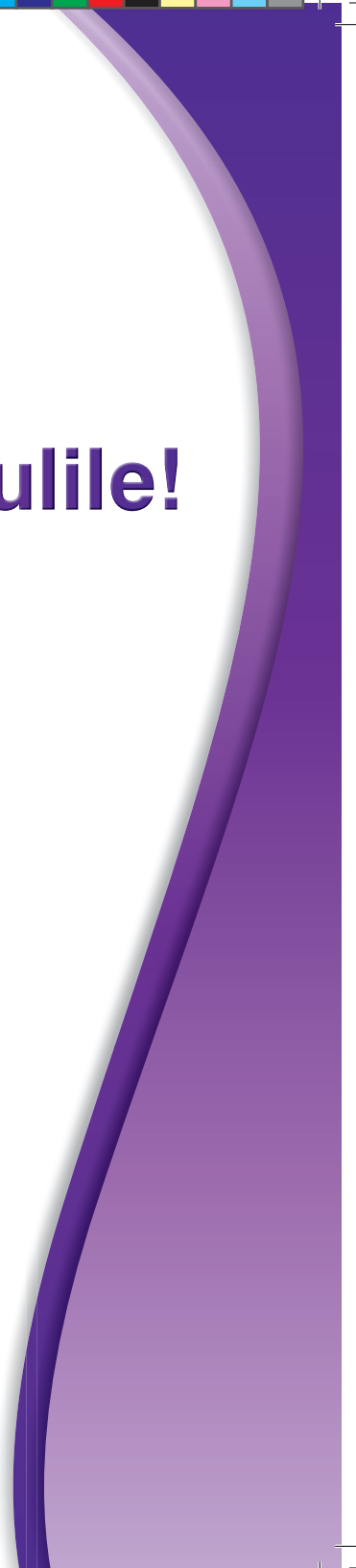




# Khetsiwe lojabulile!



**Mishumo Maphaha**





Khetsiwe yintfombatane lejabulile.

Uhlala ajabulile ngaso sonkhe sikhatsi,  
yonkhe indzawo!

Uyajabula uma adlala nasesi wakhe Phuluso.

Ubuye ajabule uma adlala naDini, likati lakhe  
lehlakaniphile nalalitsandzako.





Khetsiwe ujabulile esikolweni.

Uyajabula uma umfundzisi wakhe acela kutsi  
afundzele liklasi indzaba ngekuphimisela.  
Ufundza kahle nangekutetsemba!

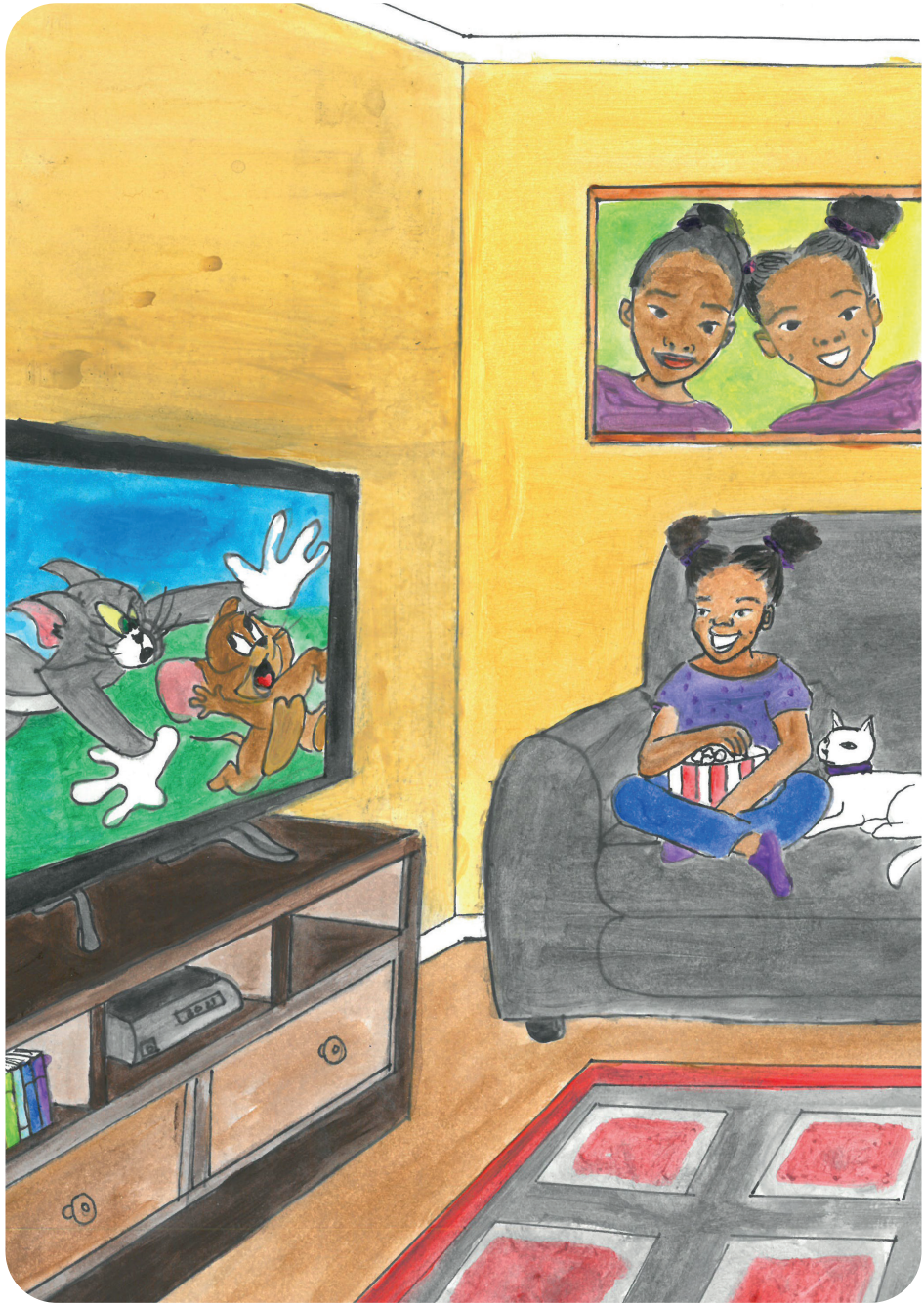




Khetsiwe uyajabula uma abukela bopopayi.

Udla emaphophukhoni aloku ahleka.

Dini uyatsandza kubukela naye bopopayi,  
kepha akawatsandzi emaphophukhoni!





Khetsiwe ujabulile epaki.

Utsakasela kudlala kumjikeneni.

Khetsiwe ubona Dini etulu esihlahleni. Uyati  
kutsi angeke awe ngobe emakati agibela  
malula!







Khetsiwe uyajabula uma baya etitolo.

Uyajabula uma make abatsengela timphahla  
letinsha.

BoKhetsiwe naPhuluso bakhetsa emalogo  
lamahle lamasha lebawatsandzako!

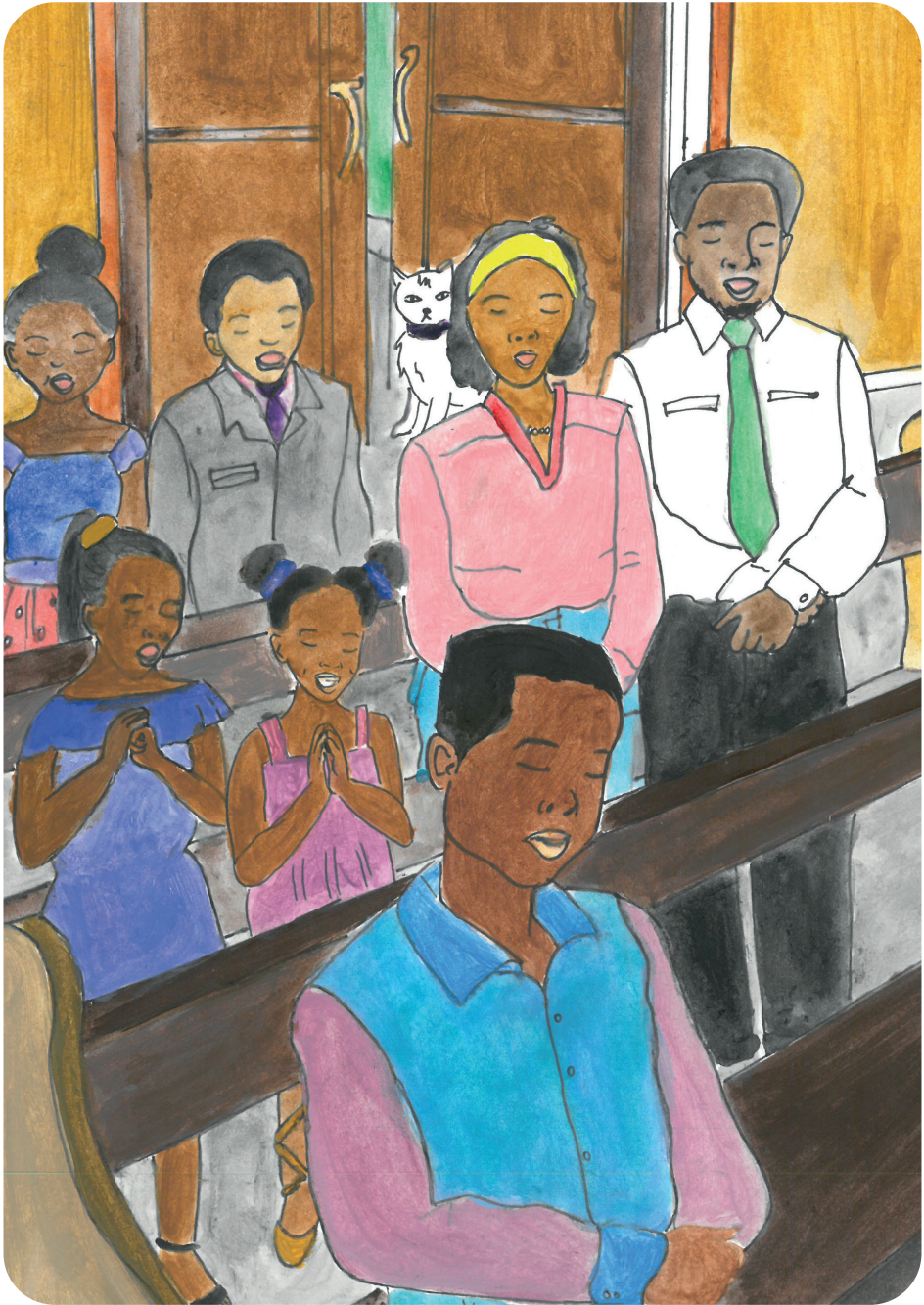




Khetsiwe uyajabula uma aya esontfweni.

Utsandza kucula nekukhuleka.

Dini naye uyalandzela aye. Kepha akabatsikameti, ulindza Khetsiwe emnyango.





Khetsiwe uyajabula uma umndeni wakhe  
udla ndzawonye, uma babuya esontfweni.

Uyajabula uma badla inyama yenkhukhu  
nelayisi.

Dini naye uyayitsandza inyama yenkhukhu!





Khetsiwe yintfombatane lejabulile.

Kuyatiwa kutsi uhlala ajabulile.

Kakhulukati uma bakanye naDini!